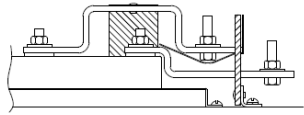
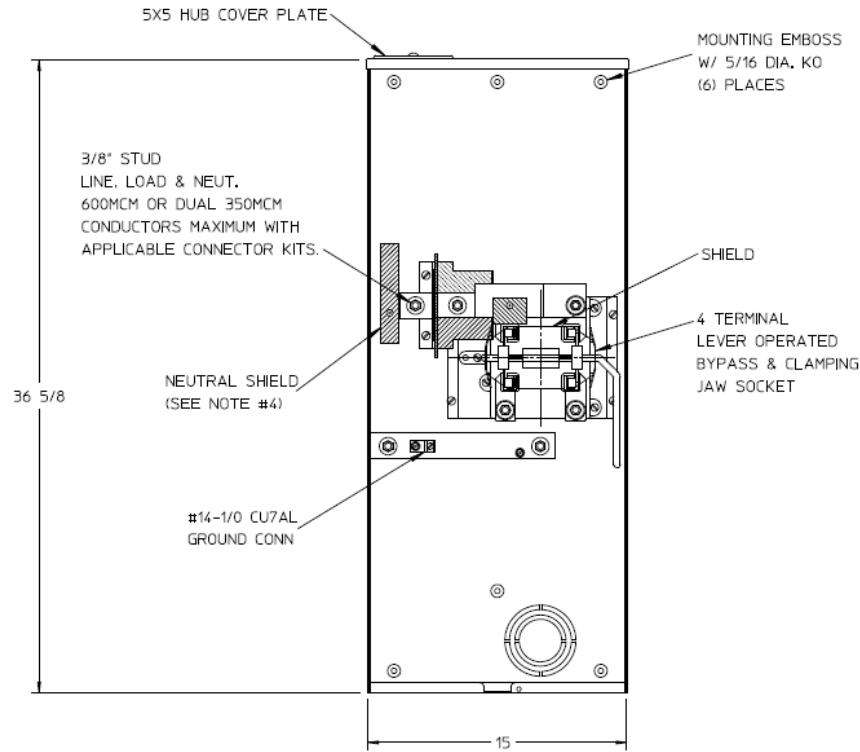


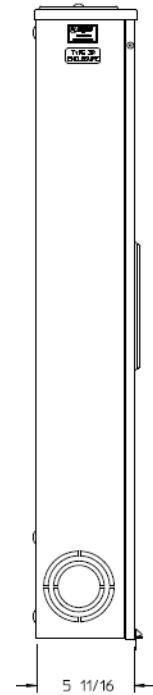
Line Bus Detail



Front View



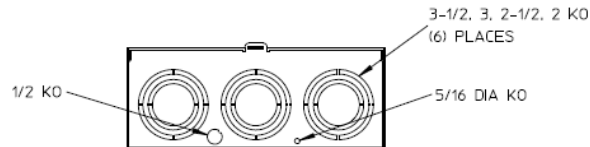
Side View




Notes

- 1) FINISH: GRAY
- 2) CABINET: 16 GA GALV. STEEL
- 3) 320 AMP CONTINUOUS
600 VAC, 1 PHASE, 3-WIRE
320 AMP BYPASS
- 4) WHEN INSTALLING THE NEUTRAL SHIELD, PLACE THE FLANGE AGAINST THE CONNECTOR.
- 5) MIDWEST LABEL ATTACHED TO THE END OF THE CARTON.
- 6) TEMPORARY CARDBOARD METER OPENING COVER PROVIDED.
- 7) MIDWEST LOGO STAMPED IN THE LOWER LEFT-HAND CORNER OF FRONT.

Bottom View





METER SOCKET – (1) 320A 600V 1P3W N3R G90 4-TERM HUB COVER PLATE LEVER BYPASS TOP/BOT FEED

CAT NO	DWG DATE	REV #
1009260MEP	02/10/2016	01