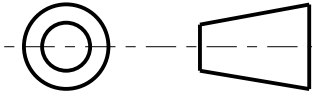


SHEET 1  
REV 4  
10096046

THIRD ANGLE PROJECTION

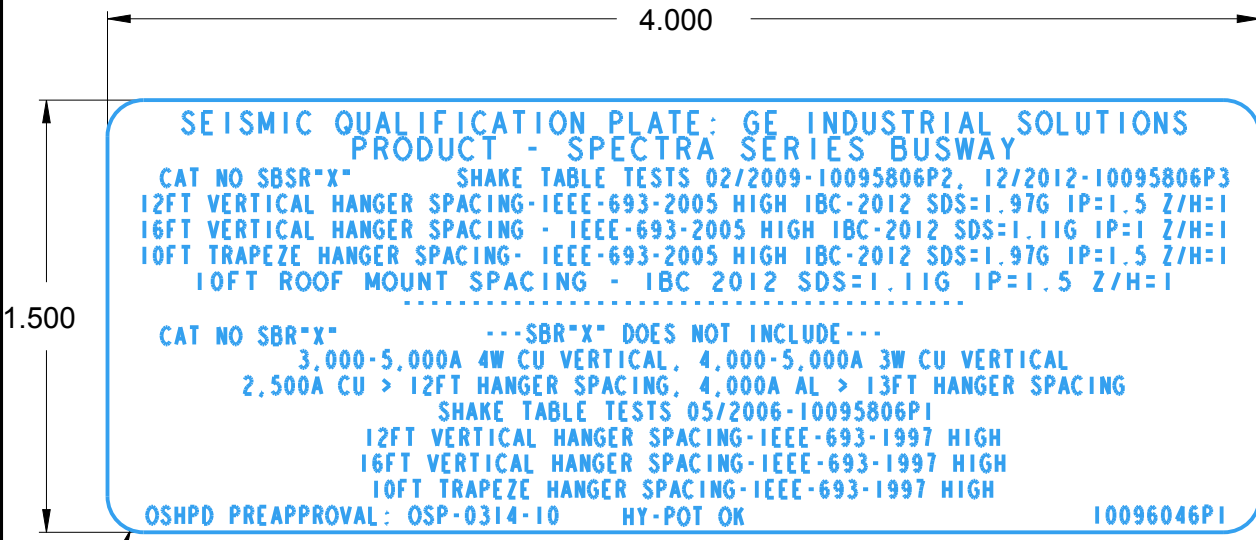
REVISIONS



REV.	DESCRIPTION	DATE	APPROVED
01	R0608478	05/03/06	
02	R0903220	02/23/09	AEE
03	R0905944	04/07/09	AEE
03A	R1307649	04/24/2013	WPM
04	R1307151	04/24/2013	WPM

GE PROPRIETARY AND CONFIDENTIAL INFORMATION  
 This document is the property of General Electric Company ("GE") and contains proprietary information of GE. This document is loaned on the express condition that neither it nor the information contained therein shall be disclosed to others without the express written consent of GE Industrial Systems, and that the information shall be used by the recipient only as approved expressly by GE Industrial Systems. This document shall be returned to GE upon its request. This document may be subject to certain restrictions under U.S. export control laws and regulations.

DRAWING NO. A4



**SEISMIC QUALIFICATION PLATE: GE INDUSTRIAL SOLUTIONS  
 PRODUCT - SPECTRA SERIES BUSWAY**

CAT NO SBR"X"      SHAKE TABLE TESTS 02/2009-10095806P2, 12/2012-10095806P3  
 12FT VERTICAL HANGER SPACING-IEEE-693-2005 HIGH IBC-2012 SDS=1.97G IP=1.5 Z/H=1  
 16FT VERTICAL HANGER SPACING - IEEE-693-2005 HIGH IBC-2012 SDS=1.11G IP=1 Z/H=1  
 10FT TRAPEZE HANGER SPACING- IEEE-693-2005 HIGH IBC-2012 SDS=1.97G IP=1.5 Z/H=1  
 10FT ROOF MOUNT SPACING - IBC 2012 SDS=1.11G IP=1.5 Z/H=1

.....

CAT NO SBR"X"      ---SBR"X" DOES NOT INCLUDE---

3,000-5,000A 4W CU VERTICAL, 4,000-5,000A 3W CU VERTICAL  
 2,500A CU > 12FT HANGER SPACING, 4,000A AL > 13FT HANGER SPACING  
 SHAKE TABLE TESTS 05/2006-10095806P1  
 12FT VERTICAL HANGER SPACING-IEEE-693-1997 HIGH  
 16FT VERTICAL HANGER SPACING-IEEE-693-1997 HIGH  
 10FT TRAPEZE HANGER SPACING-IEEE-693-1997 HIGH

OSHDP PREAPPROVAL: OSP-0314-10      HY-POT OK      10096046P1

P1

MATERIAL: 2 MIL POLYESTER THERMAL TRANSFER, LAMINATED WITH 1 MIL CLEAR GLOSS POLYESTER, UL 969 RECOGNIZED FOR INDOOR USE WITH EXPOSURE TO HIGH HUMIDITY OR OCCASIONAL EXPOSURE TO WATER

ADHESIVE: PERMANENT ACRYLIC ADHESIVE  
 COLORS: BLACK PRINTING ON WHITE BACKGROUND  
 FONT: ARIAL

Part must conform to SI 900000  
 Sect. 4, Toxicity Procedure

FOR ADDITIONAL INFO REFER TO:	SIGNATURES	DATE
APPLIED PRACTICES	MODEL	WPM 4/24/2013
DIMENSIONS ARE IN MILLIMETERS UNLESS OTHERWISE SPECIFIED IN DRAWING	DETAIL	WPM 4/24/2013
	CHECKED	.
TOLERANCE ON: 1 PL DECIMALS ± 0.1 2 PL DECIMALS ± 0.02 ANGLES ± 1.0 FRACTIONS ±	ENGRG	WPM 4/24/2013
	MFG	.
	QUALITY	.
FINISH	ISSUED	.
CRITICAL TO QUALITY CHARACTERISTIC	DRAWING FILE:	10096046P1
	SOLID MODEL:	10096046P1

**GE Consumer & GENERAL ELECTRIC COMPANY**  
*Industrial*

TITLE    **SEISMIC QUALIFICATION LABEL**  
**SPECTRA BUSWAY**

SIZE	DRAWING	REV
<b>A4</b>		<b>4</b>

SCALE: 1:1      REF. No. :      SHEET 1 of 1

**METRIC**