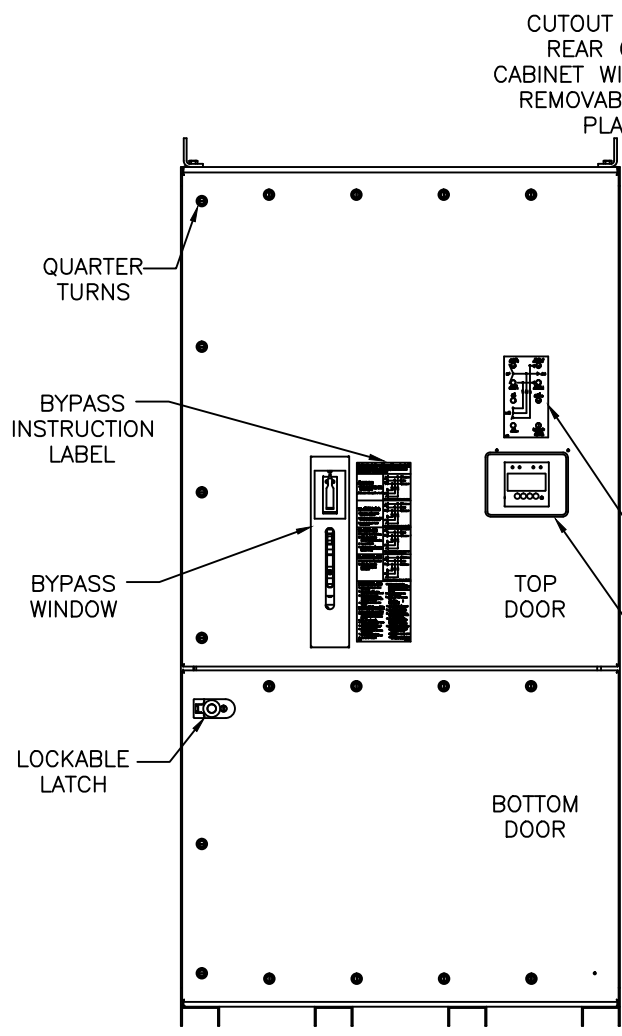
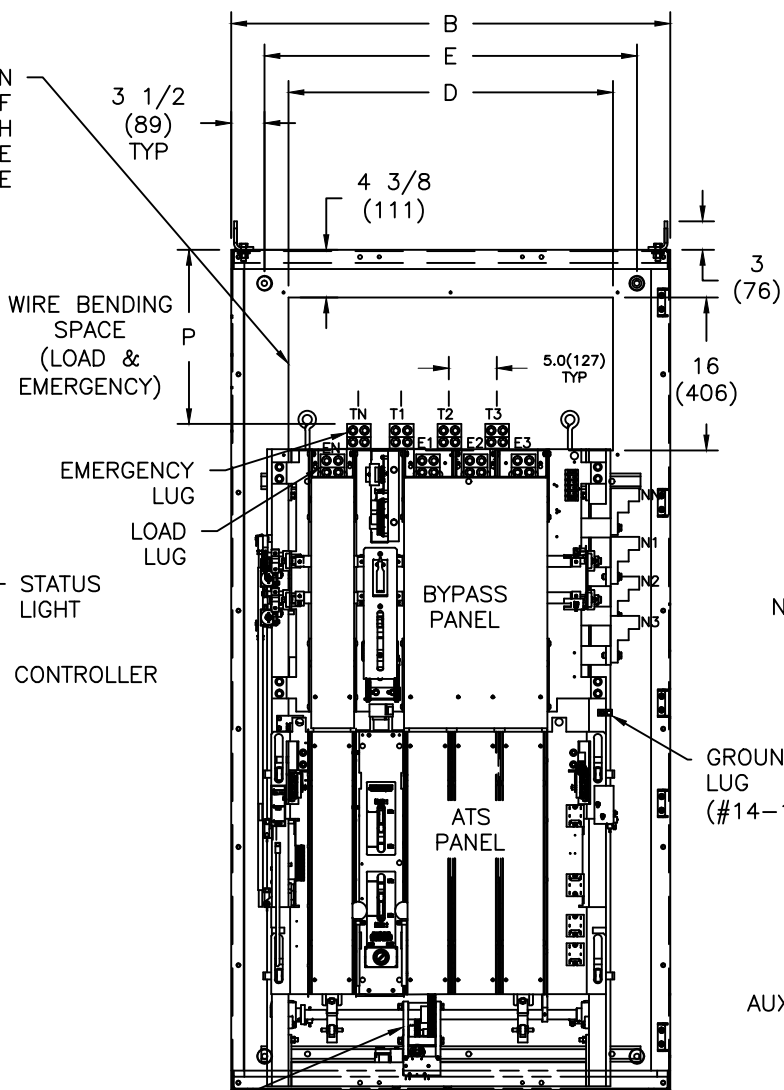


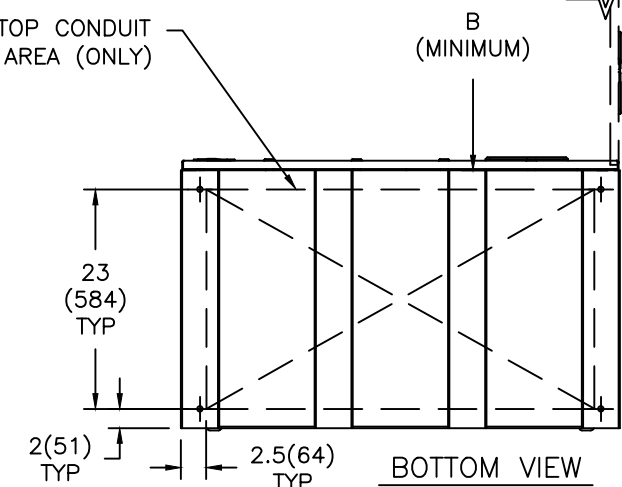
REVISIONS				
REV.	DESCRIPTION	DATE	APPROVED	
1	C033891 REVISED DRAWING	09/27/17	SV MAS	



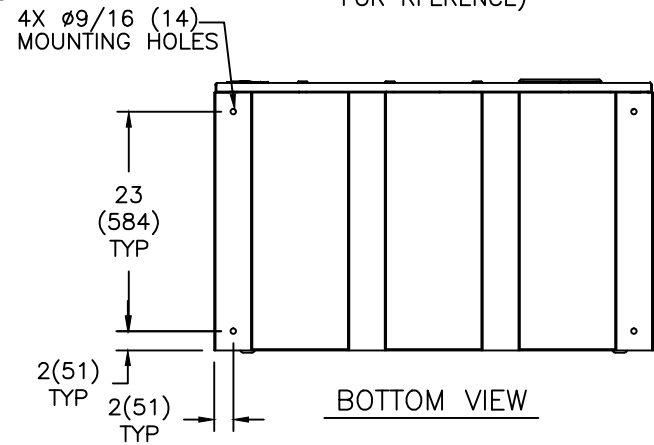
FRONT VIEW



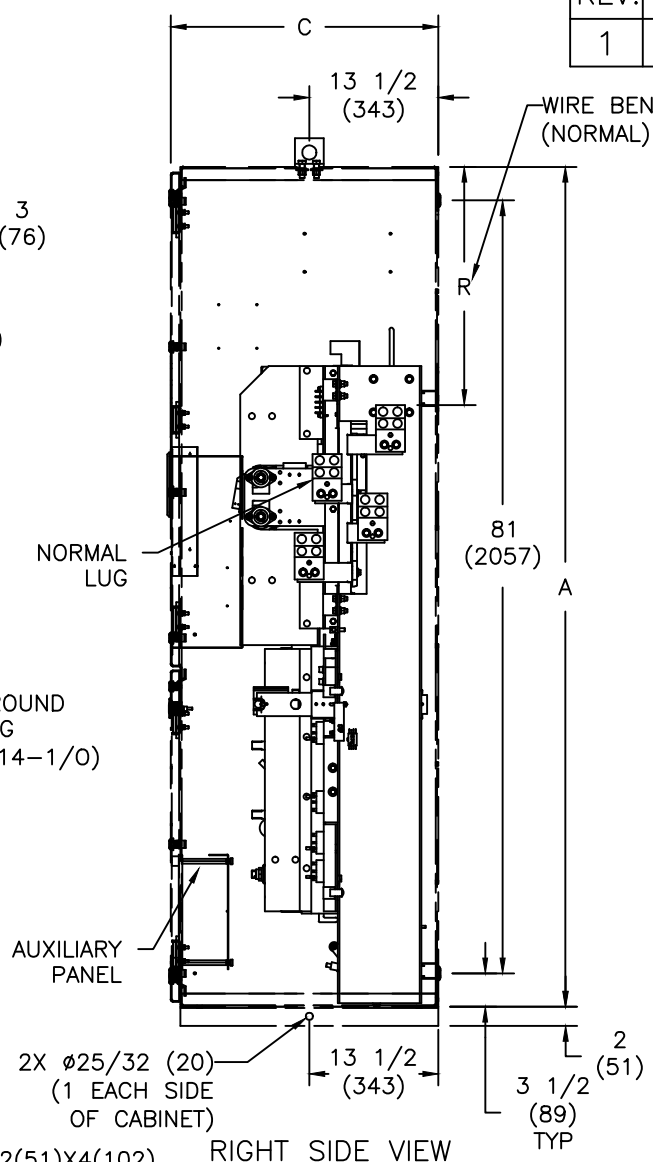
FRONT VIEW  
(DOOR NOT SHOWN)  
(4-POLE ATS SHOWN FOR REFERENCE)



BOTTOM VIEW



BOTTOM VIEW



RIGHT SIDE VIEW

ZBTSCT SWITCHES	NO. POLES	NEMA 1 CABINET	LUG RANGE	WIRE BENDING SPACE	
				P(EMERG)	R(NORMAL)
100-400 AMP	2,3	F-1860MP	(QTY 1) #4-600 MCM (33-304mm <sup>2</sup> )	18 1/4 (464)	31 3/8 (797)
	4	F-1861MP			27 1/8 (689)

ZBTS(D/CT) SWITCHES	NO. POLES	NEMA 1 CABINET	LUG RANGE	WIRE BENDING SPACE	
				P(EMERG)	R(NORMAL)
600 AMP	2,3	F-1860MP	(QTY 2) #2-600 MCM (33-304mm <sup>2</sup> )	18 1/4 (464)	31 3/8 (797)
	4	F-1861MP			27 1/8 (689)
800-1200 AMP	2,3	F-1862MP	(QTY 4) #2-600 MCM (33-304mm <sup>2</sup> )	18 1/4 (464)	29 5/8 (752)
	4	F-1863MP			25 1/8 (638)

CABINET DIMENSIONS					
CABINET	A	B	C	D	E
F-1860MP	88 (2235)	36 (914)	28 1/4 (737)	24 (610)	29 (737)
F-1862MP	88 (2235)	40 (1016)	28 1/4 (737)	28 (711)	33 (838)
F-1863MP	88 (2235)	46 (1168)	28 1/4 (737)	34 (864)	39 (991)
F-1861MP	88 (2235)	40 (1016)	28 1/4 (737)	28 (711)	33 (838)

NOTES:

- CONSTRUCTION PER UL 1008 STANDARD
- MATERIAL: 10 GA. STEEL .134 REF. UNLESS OTHERWISE NOTED.
- FINISH: ANSI 61 GRAY
- LOAD AND EMERGENCY LUG CONNECTIONS AT TOP OF BYPASS SWITCH. NORMAL LUG CONNECTIONS ON RIGHT SIDE OF MOUNTING FRAME.
- ALL CABLES MUST ENTER IN TOP WIRING AREA OF CABINET ABOVE BYPASS SWITCH. NO CABLE ENTRY ALLOWED IN BOTTOM OF CABINET.
- REAR BAY ADAPTOR IS AVAILABLE FOR BOTTOM CABLE ENTRY. CONSULT FACTORY.
- ALL DIMENSIONS ARE FOR REFERENCE ONLY AND SHOWN IN INCHES(MILLIMETERS).
- SWITCH SUPPLIED WITH STANDARD MECHANICAL LUG RATED FOR AL&CU CABLE. COMPRESSION LUGS ARE AVAILABLE AS AN OPTION.
- 100% RATED SOLID/SWITCH NEUTRAL PROVIDED PER THE SWITCH CONFIGURATION.
- REFER PAGE 2 FOR SEISMIC MOUNTING DETAILS.
- REFER LUG TORQUE LABEL FOR TORQUE INFORMATION.

SIGNATURES	DATE
MODEL SG	01/31/97
DETAIL	
CHECKED	
ENGRG	
MFG	
QUALITY	
ISSUED	

**GE Zenith Controls**

TITLE  
**ATS LAYOUT  
NEMA 1 ENCLOSURE**

FIRST MADE FOR: ZBTS(D) 600-1200 AMP & ZBTSCT 100-1200 AMP

SIZE B CAGE CODE DWG NO 50C-1003

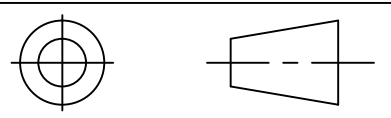
SCALE: N/A SHEET 1 OF 2

GE PROPRIETARY AND CONFIDENTIAL INFORMATION

This document is the property of General Electric Company ("GE") and contains proprietary information of GE. This document is loaned on the express condition that neither it nor the information contained therein shall be disclosed to others without the express written consent of GE Industrial Systems, and that the information shall be used by the recipient only as approved expressly by GE Industrial Systems. This document shall be returned to GE upon its request. This document may be subject to certain restrictions under U.S. export control laws and regulations.

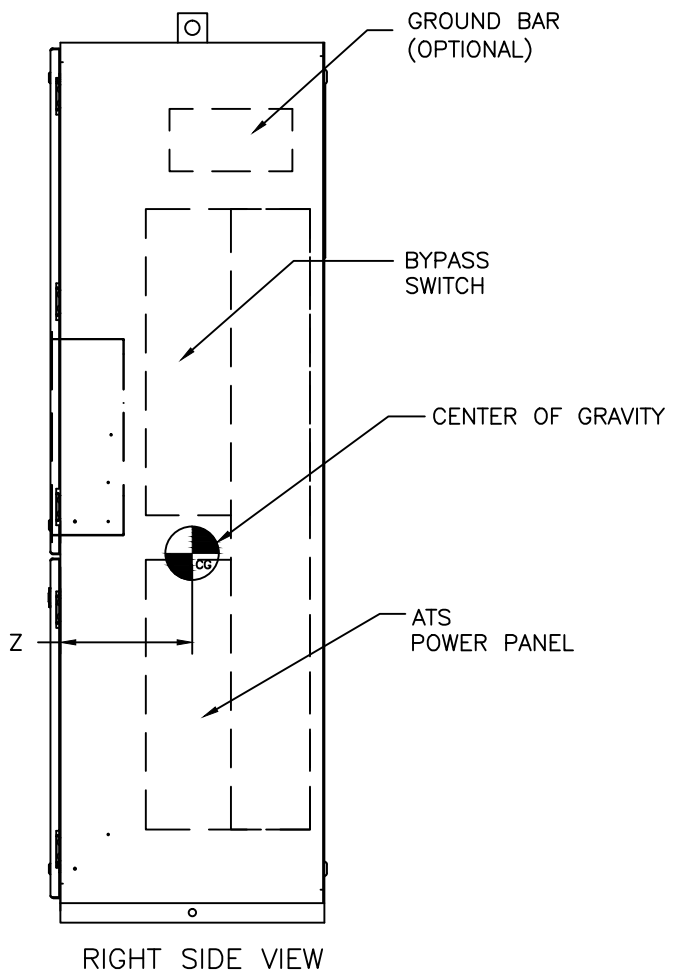
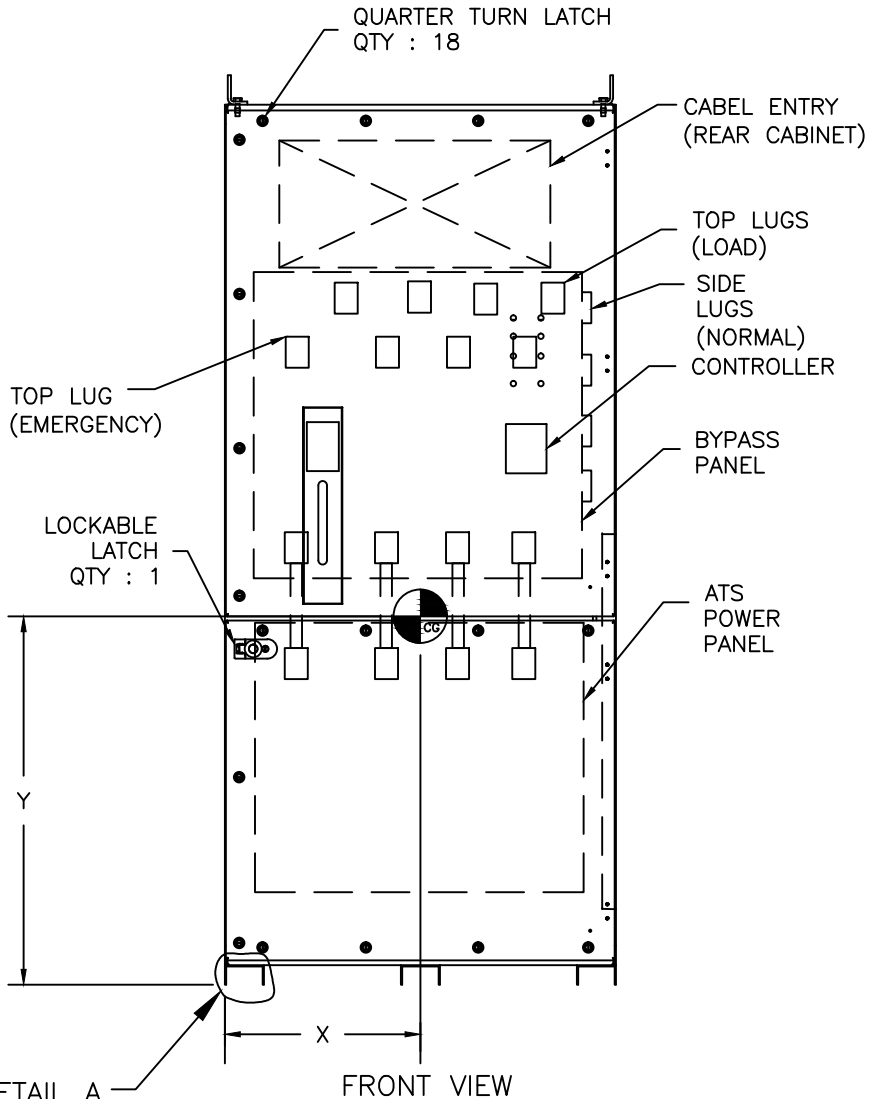
AutoCad Generated

# CTQs CRITICAL TO QUALITY CHARACTERISTIC



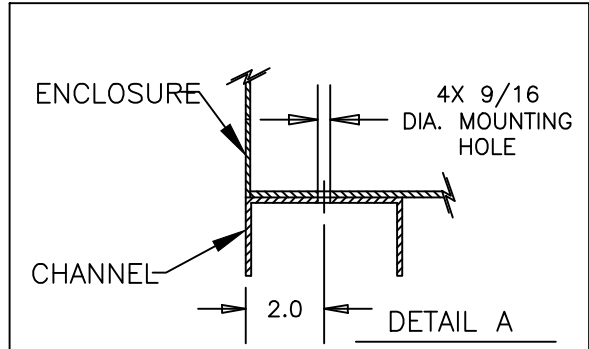
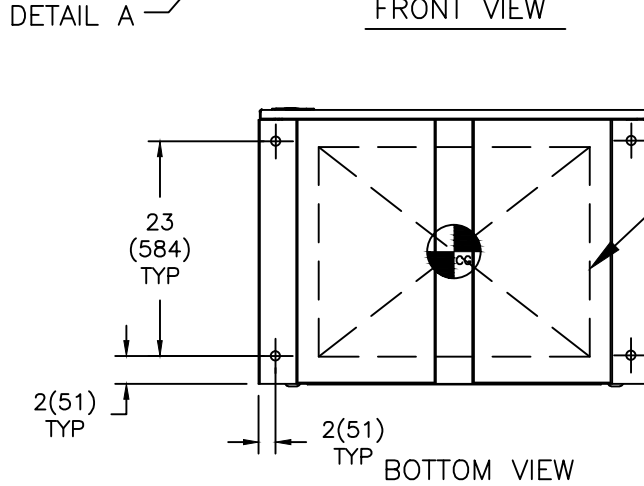


REVISIONS			
REV.	DESCRIPTION	DATE	APPROVED
1	C033891 REVISED DWG	09/28/17	SV MAS



AMP	POLE	WEIGHT	CENTER OF GRAVITY in(mm)		
		LB(kg)	X	Y	Z
100-400 (ZBTSCT)	2,3	1245(565)	18.0(457)	36.0(914)	18.5(470)
	4	1450(658)	20.0(508)		

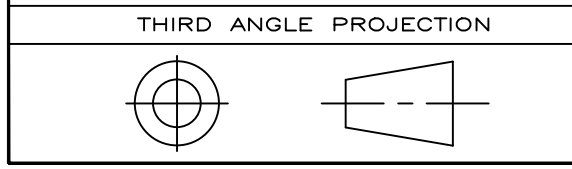
ZBTS(D)CT AMP	POLE	WEIGHT	CENTER OF GRAVITY in(mm)		
		LB(kg)	X	Y	Z
600	3	1245(565)	18.0(457)	36.0(914)	18.5(470)
	4	1450(658)	20.0(508)		
800-1200	3	1400(635)	20.0(508)	36.0(914)	18.5(470)
	4	1670(757)	23.0(584)		



**NOTES:**

- ALL DIMENSIONS ARE FOR REFERENCE ONLY AND SHOWN IN INCHES (MILLIMETERS).
- BOLT ENCLOSURE FROM C-CHANNEL BASE (SEE DETAIL B) USING THE FOLLOWING SEISMIC CERTIFIED MOUNTING HARDWARE PER MOUNTING HOLE: (HARDWARE PROVIDED BY INSTALLER).
  - \* 1/2-13 GRADE 5 BOLT TORQUE TO 75 FT-LBS. (102 NEWTON METERS).
  - \* 1/2-13 STANDARD FLAT WASHER
  - \* 1/2 (13) HELICAL SPRING LOCK WASHER.
- CENTER OF GRAVITY DIMENSIONS ARE FOR REFERENCE ONLY.
- FOR WORKING CLEARANCE REFER TO NATIONAL AND LOCAL CODES AND STANDARDS.

SIGNATURES		DATE		<b>GE Zenith Controls</b> TITLE <b>SEISMIC MOUNTING FOR NEMA-1 CABINET</b> FIRST MADE FOR: ZBTS(D)(CT) 600-1200A & ZBTSCT 100-400A
MODEL	GG	05/13/08		
DETAIL				
CHECKED				
ENGRG				
MFG				
QUALITY				
ISSUED				
DRAWING FILE: 50c-1003.dwg		SIZE	CAGE CODE	DWG NO
MODEL / ASSEMBLY FILE:		B		50C-1003
# CTQs	⊖	CRITICAL TO QUALITY CHARACTERISTIC		SCALE: N/A
AutoCad Generated			SHEET	2 OF 2



GE PROPRIETARY AND CONFIDENTIAL INFORMATION

This document is the property of General Electric Company ("GE") and contains proprietary information of GE. This document is loaned on the express condition that neither it nor the information contained therein shall be disclosed to others without the express written consent of GE Industrial Systems, and that the information shall be used by the recipient only as approved expressly by GE Industrial Systems. This document shall be returned to GE upon its request. This document may be subject to certain restrictions under U.S. export control laws and regulations.

