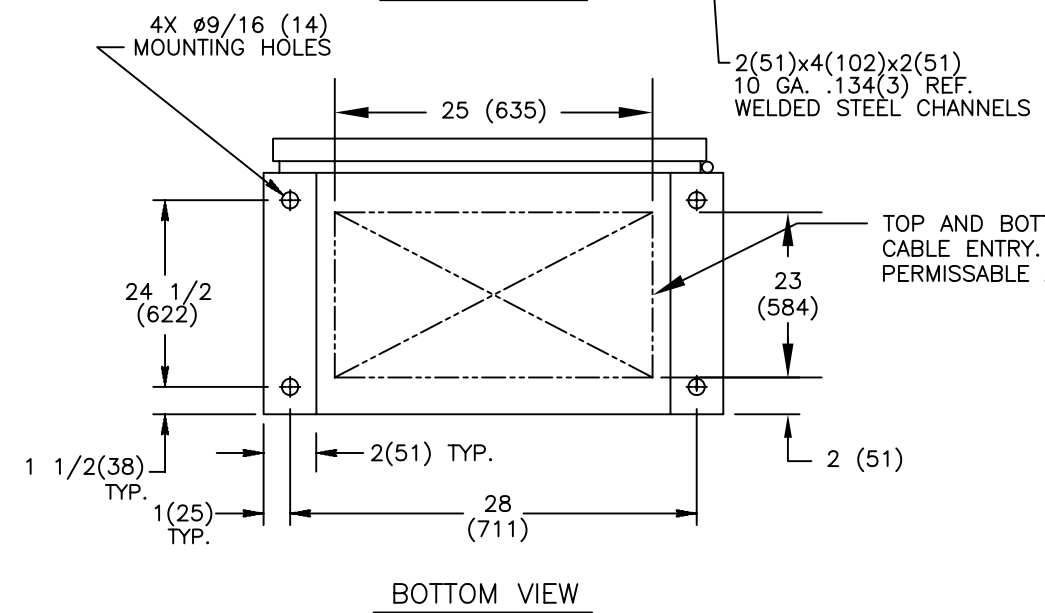
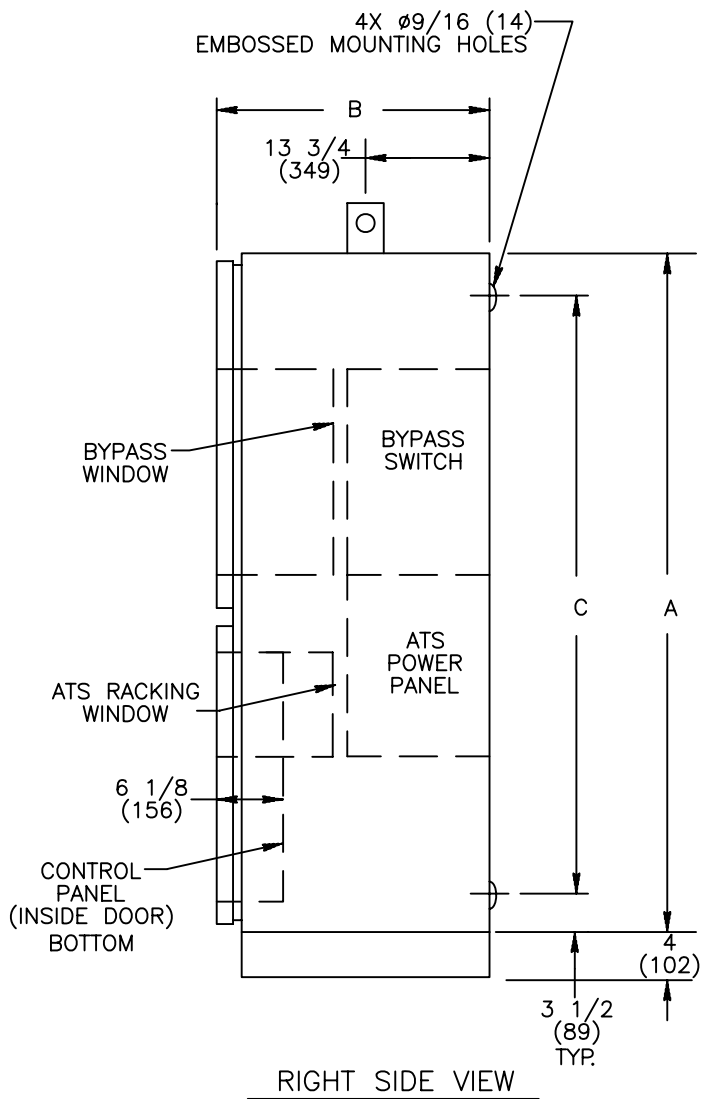
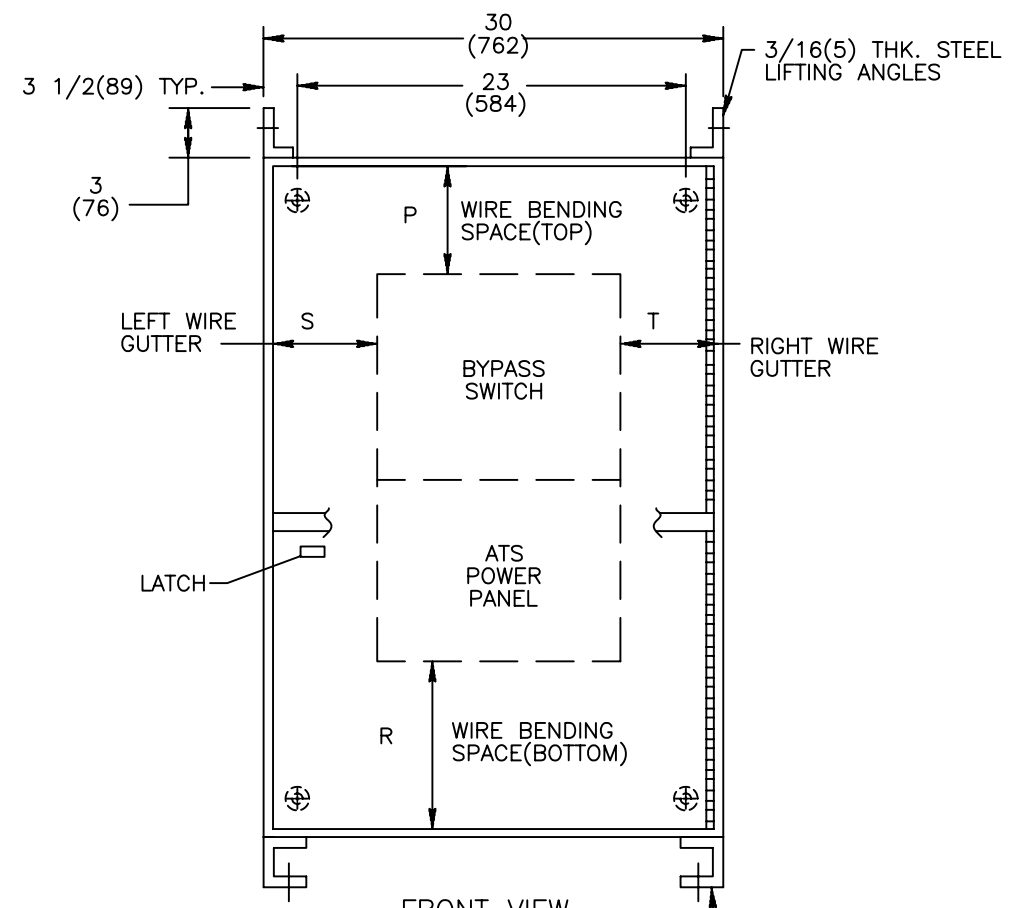


REVISIONS			
REV.	DESCRIPTION	DATE	APPROVED
F	S-9035 Revised cable entry	02/15/11	MAS MAS

ZBTS/ZBTSD SWITCHES	NO. POLES	NEMA(1) CABINET	LUG RANGE	WIRE BENDING SPACE		WIRE GUTTERS	
				P(TOP)	R(BOTTOM)	S(LEFT)	T(RIGHT)
100-225 AMP	2,3,4	F-1853MP	#6-250 MCM (16-150mm ²)	15 1/4 (387)	16 (406)	3 3/8 (86)	1 1/8 (30)
260-400 AMP	2,3,4	F-1853MP	#4-600 MCM (21-304mm ²)	15 1/4 (387)	16 (406)	3 3/8 (86)	1 1/8 (30)

CABINET DIMENSIONS			
CABINET	A	B	C
F-1853MP	79 (2007)	28 1/2 (724)	72 (1809)



NOTES:

- MATERIAL: 10 GA. STEEL .134(3) REF. UNLESS OTHERWISE NOTED.
- FINISH: PER F-7000.
- ALL LUG CONNECTIONS AT TOP OF BYPASS SWITCH.
- ALL DIMENSIONS ARE FOR REFERENCE ONLY AND SHOWN IN INCHES(MILLIMETERS).
- CONSTRUCTION PER UL 1008
- FOR SEISMIC MOUNTING, REFER TO SHEET NO. 4.

SIGNATURES		DATE	GE Zenith Controls TRANSFER SWITCHES NEMA 1 ENCL. FIRST MADE FOR: -		
MODEL	DF	5/28/03			
DETAIL					
CHECKED					
ENGRG	CEE	1/26/07			
ISSUED					
DRAWING FILE:	50c-1026-f-1.dwg		SIZE	CAGE CODE	DWG NO
MODEL / ASSEMBLY FILE:	ZBTS(D) 100-400 AMP		B		50C-1026
# CTQs	⊖	CRITICAL TO QUALITY CHARACTERISTIC	SCALE:	N/A	SHEET 1 OF 4

THIRD ANGLE PROJECTION

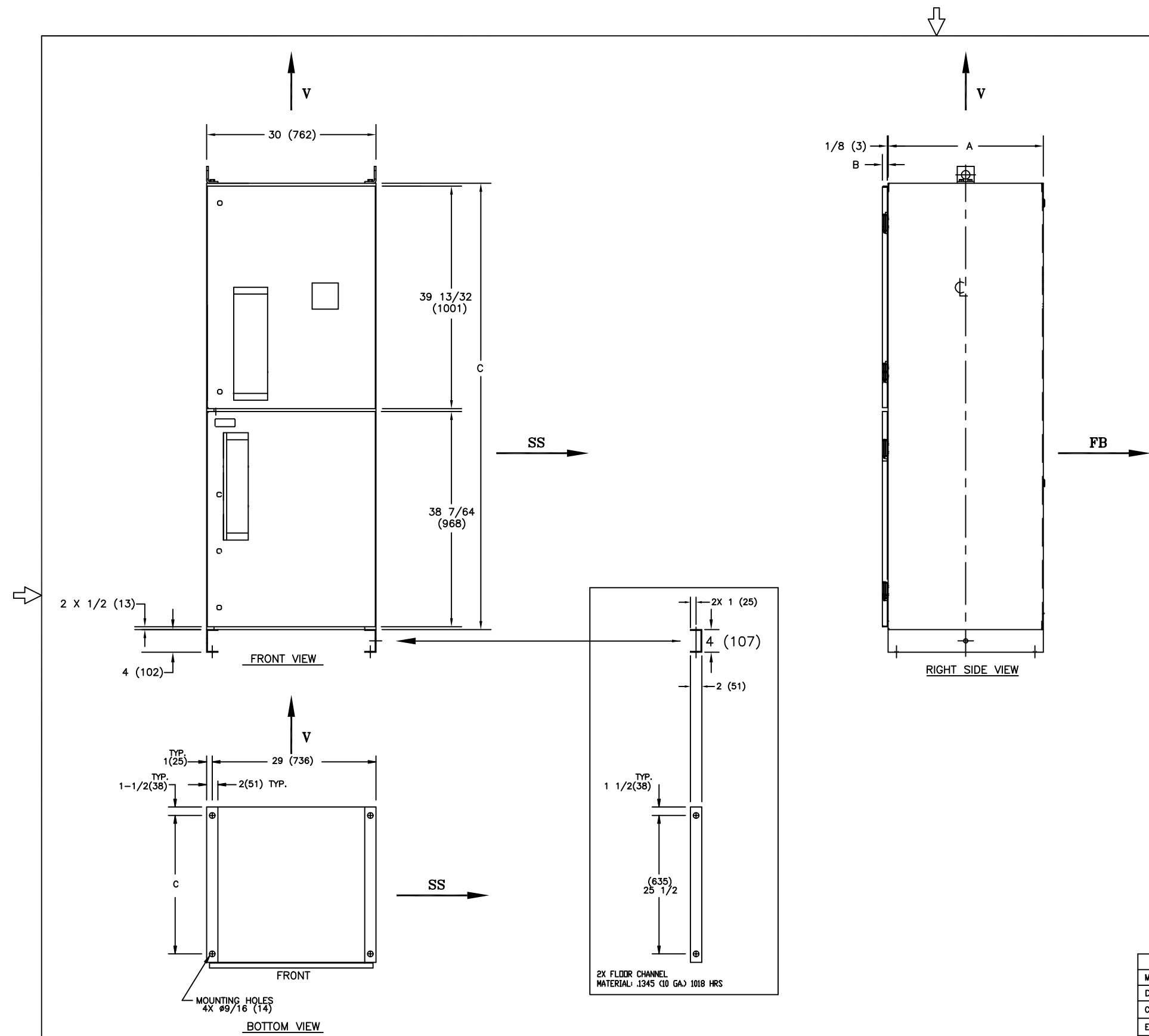
GE PROPRIETARY AND CONFIDENTIAL INFORMATION

This document is the property of General Electric Company ("GE") and contains proprietary information of GE. This document is loaned on the express condition that neither it nor the information contained therein shall be disclosed to others without the express written consent of GE Industrial Systems, and that the information shall be used by the recipient only as approved expressly by GE Industrial Systems. This document shall be returned to GE upon its request. This document may be subject to certain restrictions under U.S. export control laws and regulations.

AutoCad Generated

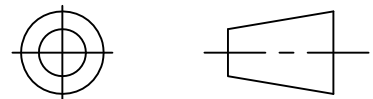
REVISIONS			
REV.	DESCRIPTION	DATE	APPROVED
F	S-9035 Revised sheet 1.	02/18/11	MAS MAS

NOTE:
1. FOR SEISMIC MOUNTING, REFER TO SHEET NO.4



SIGNATURES		DATE	GE Zenith Controls		
MODEL	DF	5/28/03	 CABINET F14C (ZTS-400A) ORTHOGONAL DIRECTION DRAWING FIRST MADE FOR: RESONANCE SEARCH		
DETAIL					
CHECKED					
ENGRG	CEE	1/26/07			
MFG					
QUALITY			SIZE	CAGE CODE	DWG NO
ISSUED			B		50C-1026
DRAWING FILE:	50c-1026-f-2.dwg		SCALE:	N/A	
MODEL / ASSEMBLY FILE:	ZBTS(D) 100-400 AMP		SHEET	2 OF 4	
# CTQs	⊕ CRITICAL TO QUALITY CHARACTERISTIC				

THIRD ANGLE PROJECTION



GE PROPRIETARY AND CONFIDENTIAL INFORMATION

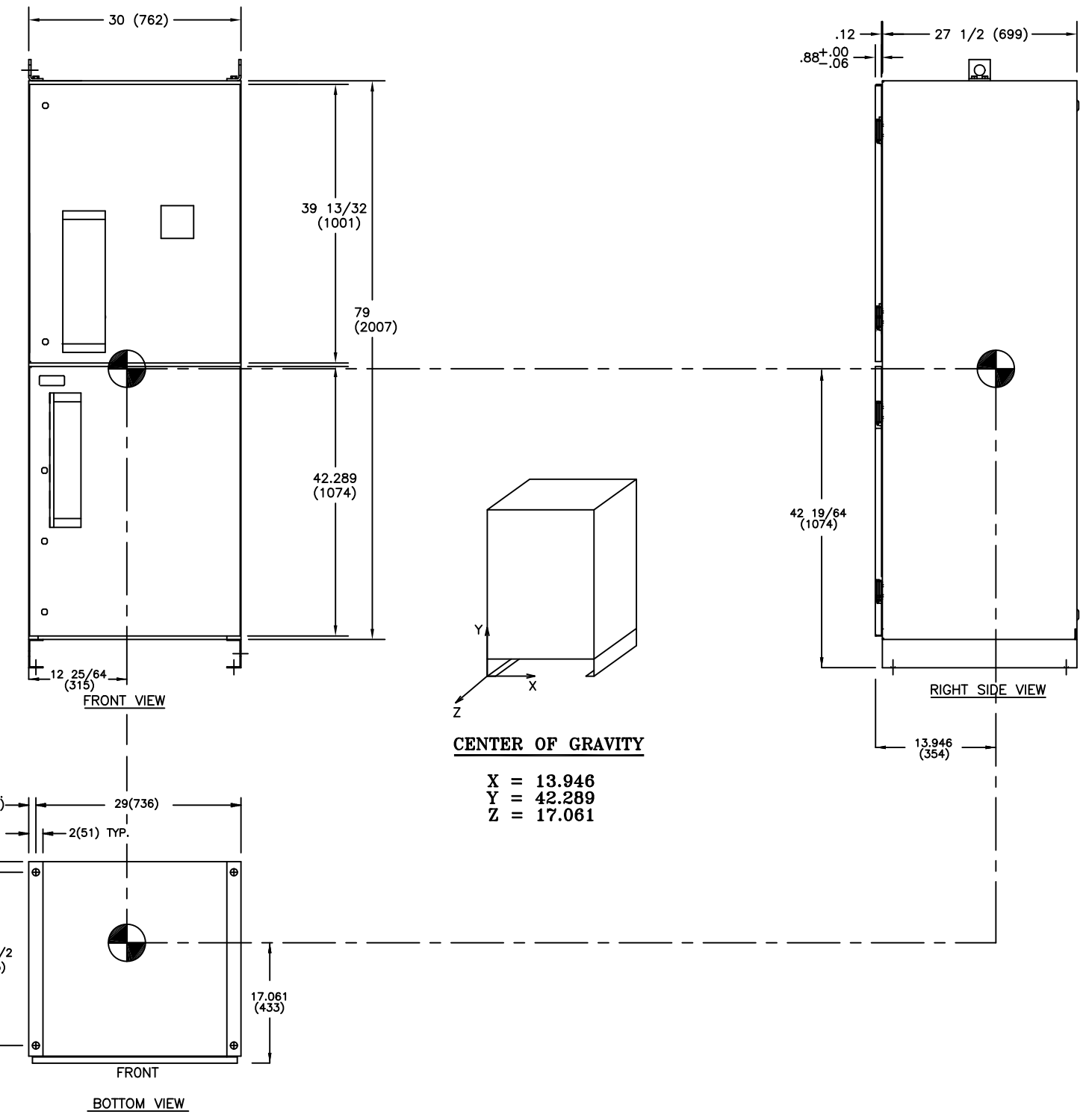
This document is the property of General Electric Company ("GE") and contains proprietary information of GE. This document is loaned on the express condition that neither it nor the information contained therein shall be disclosed to others without the express written consent of GE Industrial Systems, and that the information shall be used by the recipient only as approved expressly by GE Industrial Systems. This document shall be returned to GE upon its request. This document may be subject to certain restrictions under U.S. export control laws and regulations.

AutoCad Generated

REVISIONS			
REV.	DESCRIPTION	DATE	APPROVED
F	S-9035 Revised sheet 1.	02/18/11	MAS MAS

NOTE:

1. FOR SEISMIC MOUNTING, REFER TO SHEET NO.4

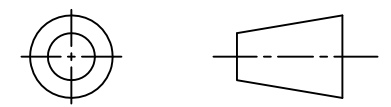


CENTER OF GRAVITY

X = 13.946
Y = 42.289
Z = 17.061

SIGNATURES		DATE	GE GE Zenith Controls		
MODEL	DF	5/28/03	100-400A BYPASS CENTER OF GRAVITY		
DETAIL					
CHECKED					
ENGRG	CEE	1/26/07			
MFG					
QUALITY			FIRST MADE FOR: -		
ISSUED			SIZE	CAGE CODE	DWG NO
DRAWING FILE:	50c-1026-f-3.dwg		B		50C-1026
MODEL / ASSEMBLY FILE:	ZBTS(D) 100-400 AMP				
# CTQs	⊖	CRITICAL TO QUALITY CHARACTERISTIC	SCALE:	N/A	SHEET 3 OF 4

THIRD ANGLE PROJECTION



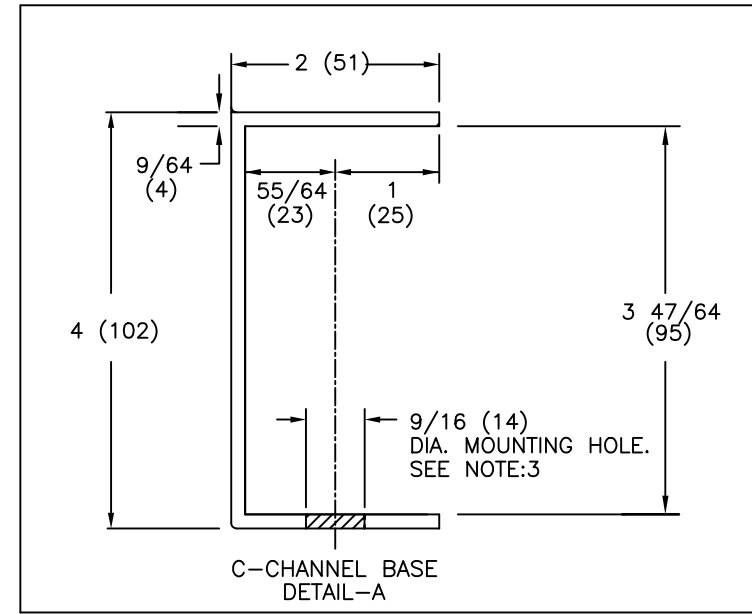
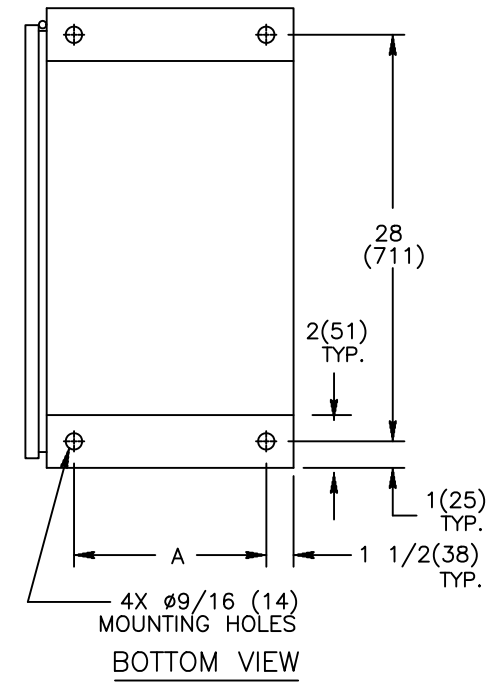
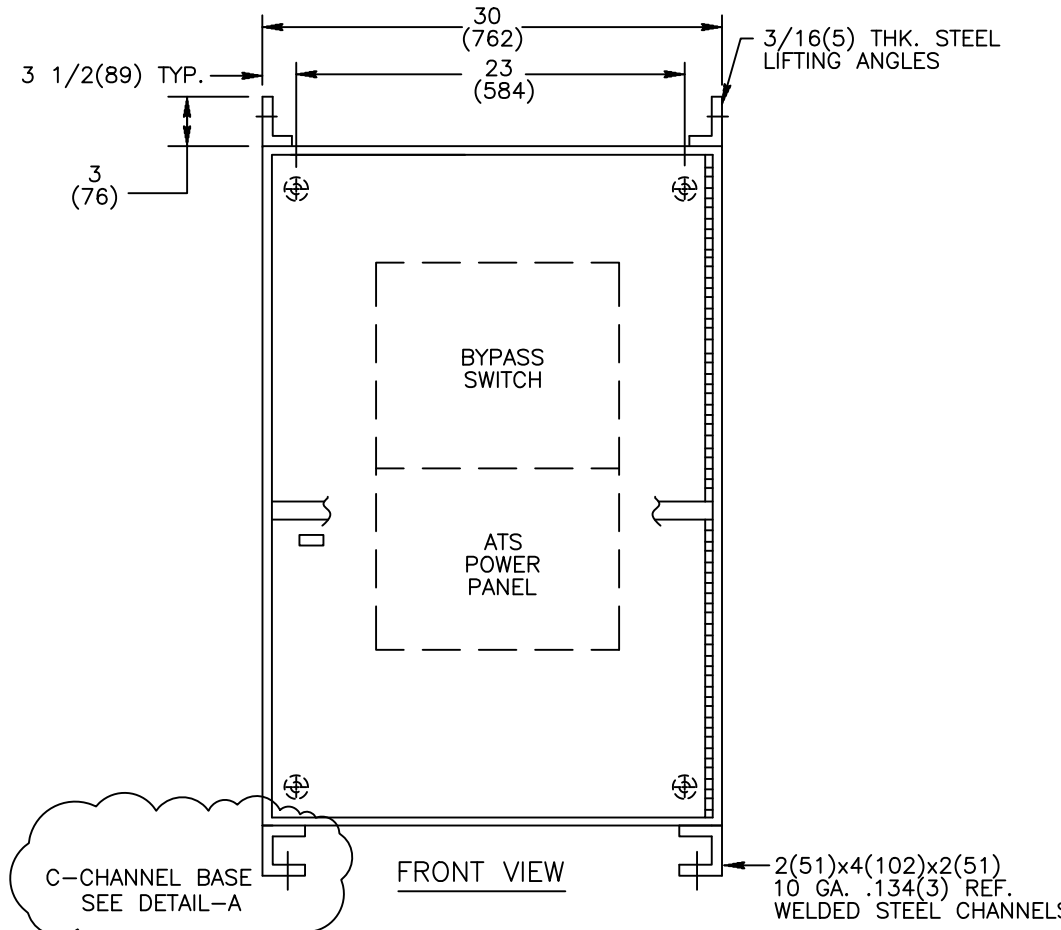
GE PROPRIETARY AND CONFIDENTIAL INFORMATION

This document is the property of General Electric Company ("GE") and contains proprietary information of GE. This document is loaned on the express condition that neither it nor the information contained therein shall be disclosed to others without the express written consent of GE Industrial Systems, and that the information shall be used by the recipient only as approved expressly by GE Industrial Systems. This document shall be returned to GE upon its request. This document may be subject to certain restrictions under U.S. export control laws and regulations.

AutoCad Generated



REVISIONS			
REV.	DESCRIPTION	DATE	APPROVED
F	S-9035 Revised sheet 1	02/15/11	MAS MAS



NOTES:

- ALL DIMENSIONS ARE FOR REFERENCE ONLY AND SHOWN IN INCHES (MILLIMETERS).
- SEISMIC DATA OF MOST VULNERABLE ATS CONSTRUCTION WITHIN ITS PLATFORM:

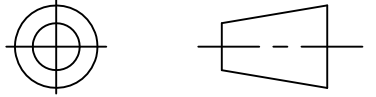
MAXIMUM DEFLECTION AT TOP OF GEAR: $d_{ss}=1.41$ INCHES (36 mm)	
$d_{fb}=0.67$ INCHES (17 mm)	
QUALIFIED BY: TIME HISTORY SHAKE TABLE TEST	
IEEE-693-2005-HIGHx2.5 (64 mm)	
IBC-2003-300%G	
RESONANCE FREQUENCIES: $f_{ss}=7.0$ Hz	
$f_{fb}=10.2$ Hz	
$f_v > 33.0$ Hz	
MAXIMUM REACTION TO ANY BOLT: $V_{ss}=788$ LBS (358 KG) SHEAR	
(DEAD LOAD +/- SEISMIC) $V_{fb}=788$ LBS (358 KG) SHEAR	
$T_v=3170$ LBS (1441 KG) UP	
$P_v=3787$ LBS (1721 KG) DOWN	
- BOLT ENCLOSURE FROM C-CHANNEL BASE (SEE DETAIL A) USING THE FOLLOWING SEISMIC CERTIFIED MOUNTING HARDWARE PER MOUNTING HOLE: (HARDWARE PROVIDED BY INSTALLER).
 - 1/2-13 GRADE 5 BOLT TORQUE TO 75 FT-LBS. (102 NEWTON METERS).
 - US STANDARD HIGH STRENGTH ZINC-PLATED FLAT WASHER 5/8 (16) I.D. AND 1-1/2 (38) O.D.
 - 1/2 (13) HELICAL SPRING LOCK WASHER.
- CENTER OF GRAVITY DIMENSIONS ARE FOR REFERENCE ONLY.
- STANDARD SWITCH CONFIGURATION HAS ALL LUGS LOCATED AT TOP.
- SWITCH SUPPLIED WITH STANDARD MECHANICAL LUG. REFER TO SHEET 1 FOR LUG DETAILS
- ALL CONTROL WIRES (18-12 AWG) MUST BE TORQUED TO 19 in-lbs. (2 N-m)
- LUG TORQUE ARE APPLICABLE FOR CU & AL CABLES.
- FOR WORKING CLEARANCE REFER TO NATIONAL AND LOCAL CODES AND STANDARDS.

MODEL	AMPERAGE	NO. POLES	NEMA CABINET
ZBTS	100-225	2,3,4	F-1853MP
	260-400		
ZBTS D	100-225	2,3,4	F-1853MP
	260-400		

CABINET DIMENSIONS	
CABINET	A
F-1853MP	27 (686)

SIGNATURES		DATE	GE Zenith Controls
MODEL DF		5/28/03	
DETAIL			TITLE
CHECKED			NEMA 1 ENCLOSURE SEISMIC MTG. DETAIL
ENGRG CEE		1-26-07	
MFG			FIRST MADE FOR: -
QUALITY			SIZE
ISSUED			CAGE CODE
DRAWING FILE: 50C-1026-f-4.dwg			DWG NO
MODEL / ASSEMBLY FILE: ZBTS(D) 100-400 AMP			50C-1026
# CTQs	⊖ CRITICAL TO QUALITY CHARACTERISTIC	SCALE: N/A	SHEET 4 OF 4

THIRD ANGLE PROJECTION



GE PROPRIETARY AND CONFIDENTIAL INFORMATION

This document is the property of General Electric Company ("GE") and contains proprietary information of GE. This document is loaned on the express condition that neither it nor the information contained therein shall be disclosed to others without the express written consent of GE Industrial Systems, and that the information shall be used by the recipient only as approved expressly by GE Industrial Systems. This document shall be returned to GE upon its request. This document may be subject to certain restrictions under U.S. export control laws and regulations.

AutoCad Generated

