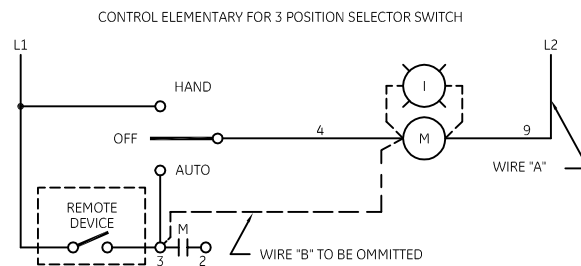
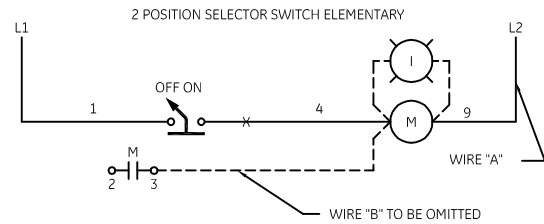
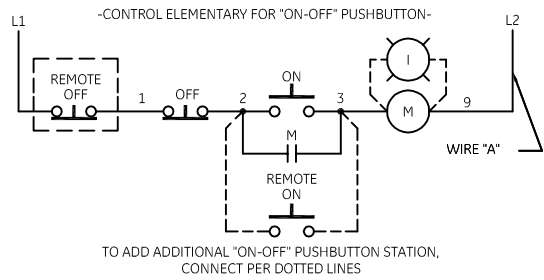
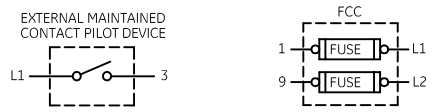
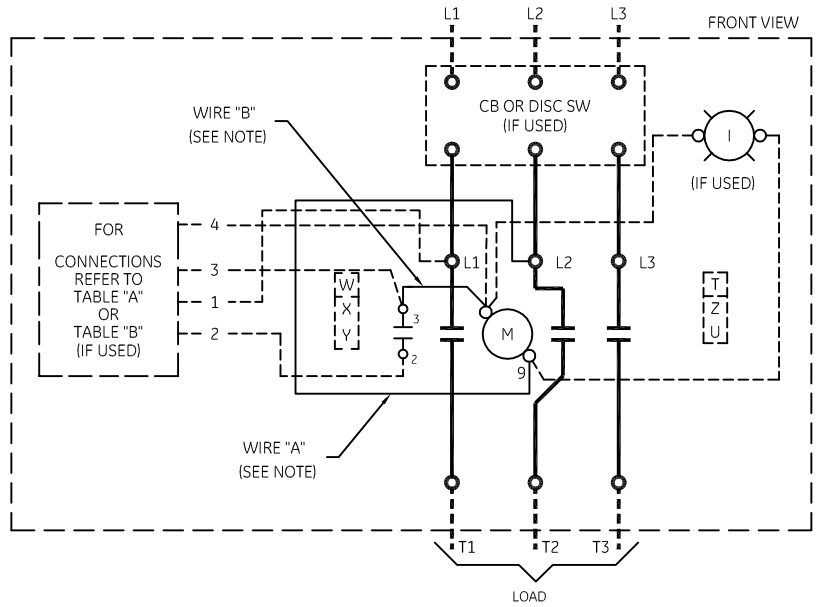


TABLE A STANDARD PILOT DEVICES	TABLE B OIL-TIGHT PILOT DEVICES
ON-OFF BLACK 1 WHITE 2 RED 3	ON-OFF 1 2 3
PUSHBUTTONS OFF ON WHITE 1 BLACK 4 (OMIT WIRE "B")	PUSHBUTTONS OFF ON 1 4 (OMIT WIRE "B")
2 POSITION SELECTOR SWITCH HAND OFF RED 1 OFF WHITE 3 AUTO BLACK 4 (OMIT WIRE "B")	2 POSITION SELECTOR SWITCH HAND OFF AUTO 1 OFF X 3 4 (OMIT WIRE "B")
3 POSITION SELECTOR SWITCH REMOTE DEVICE 1 3	3 POSITION SELECTOR SWITCH REMOTE DEVICE 1 3



NOMENCLATURE

M-LINE CONTACTOR
 FCC-FUSED CONTROL CIRCUIT
 I-INDICATING LIGHT

ON-OFF-AUTO IS AN ALTERNATE MARKING FOR HAND-OFF-AUTO

USE 75°C COPPER CONDUCTORS ONLY, FOR FIELD WIRING. TORQUE LINE AND LOAD TERMINALS 20 IN-LBS OR AS MARKED.

NOTE: POWER POLES MAY BE CONVERTED TO NORMALLY CLOSED

NOTE: ADDITIONAL OVER-CURRENT PROTECTION MAY BE REQUIRED. REFER TO THE NATIONAL ELECTRICAL CODE OR LOCAL ELECTRICAL CODE AS REQUIRED.

FOR SEPARATE CONTROL SOURCE-OMIT WIRE "A" AND CONNECT SEPARATE CONTROL SOURCE TO 9 ON COIL AND TO 1 ON PILOT DEVICE. WIRE "A" IS OMITTED AT FACTORY ON ALL CONTACTORS WITH A COIL VOLTAGE OF 120V OR LESS.

FOR EXTRA AUXILIARY CONTACTS - A MAXIMUM OF 4 CONTACTS MAY BE ADDED AT POSITIONS T,U,W,X,Y, & Z.

HOLDING INTERLOCK MAY BE OMITTED ON FORMS WITHOUT PUSHBUTTONS.

GROUND KIT

1/2-IN CONDUIT	55-213403G001
3/4-IN CONDUIT	55-213403G002
1-IN CONDUIT	55-213403G003
1 1/4-IN CONDUIT	55-213403G004
1 1/2-IN CONDUIT	55-213403G005
2-IN CONDUIT	55-213403G006
2 1/2-IN CONDUIT	55-213403G007
3-IN CONDUIT	55-213403G008



imagination at work

WIRING DIAGRAM
 CR360L LIGHTING CONTACTOR

AN #	THIRD ANGLE PROJECTION	SHEET #
09-9107		1 OF 1

DWG NO.	DATE	REV
55-191619	07/15/2009	10