

GE Consumer & Industrial  
Electrical Distribution

Integrated Switchboard Solutions

# Save yourself...

Time, Money, Space, Labor, Headaches



imagination at work

# Integrated switchboards instead of separate components



## What's in it for you?

Owners, specifiers, contractors and installers all find a lot to like about GE integrated switchboards. Compact package. Fast, easy installation. Increased profitability. Top electrical performance.

### Owners/specifiers

#### Separate components

- Specify and order switchboard, power panels, lighting panels, transformers and lighting contactors
- Coordinate deliveries of equipment, including panel boxes and fronts, from multiple locations at different times, check them off, schedule various installations
- Keep track of everything for MRO

#### Integrated switchboard

- Order and receive GE integrated switchboard – one order, one shipment

#### You save

- Electrical room space, which can be used for profitable purposes or to move additional equipment into the electrical room's controlled environment
- Hours of costly time spent receiving, inventory, scheduling
- Installation labor costs with only one complete unit to install
- Material costs by using much less conduit and cable
- MRO management hassles
- A reputation for efficiency and quality

### Contractors/installers

#### Separate components

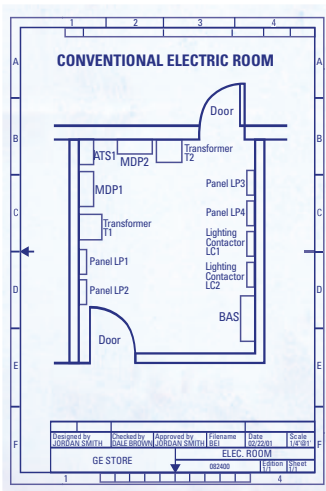
- Locate and consolidate all parts
- Bring conduits thru the floor
- Mount panel boards (boxes, interiors, fronts)
- Mount transformers
- Mount lighting contactors
- Run conduits and wire cables between components

#### Integrated switchboard

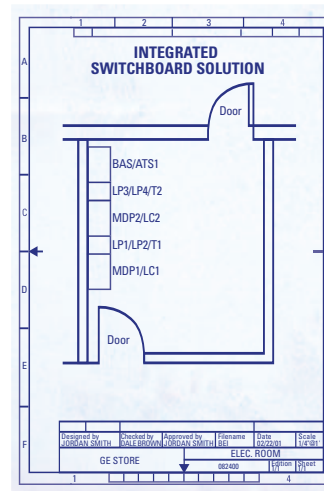
- Bring conduits in through the floor
- Set GE integrated switchboard in place
- Run conduit and wire cables

#### You save

- Wiring time for quicker completion so additional projects can be accepted and completed without increasing overhead
- Material costs by using much less conduit and cable
- Callback problems due to separate component complexity
- Installation headaches and backaches
- A reputation for efficiency and quality

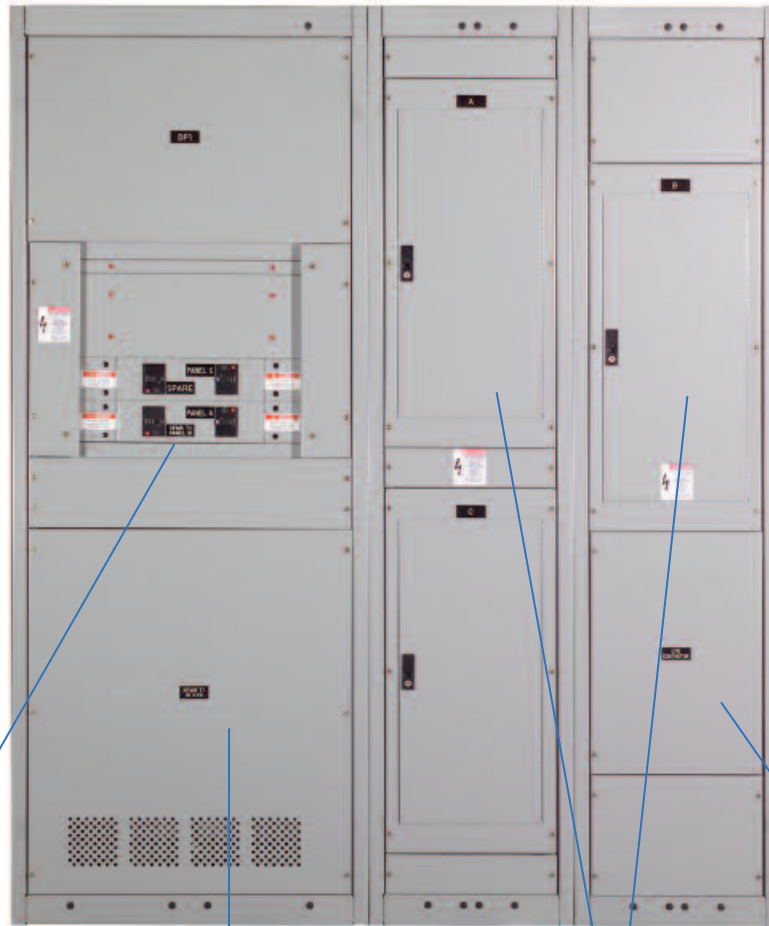


In a conventional layout, each piece – transformers, power and lighting panels, lighting contactors – are installed separately, eating up a whole lot of time, labor, and wall and floor space.



The GE integrated switchboard does everything separate pieces do, in a fraction of the space. Taking up only half as much space, this frees up real estate for better, more profitable uses. Taking only a fraction of the time, it also frees up contractors/installers so they can move on to the next job.

Good things. Small package.



**Power Panels**

- Up to 1200A
- Up to 65kAIC



**Transformers**

- Up to 150KVA
- TP1 Energy Efficient



**Lighting Panels**

- Up to 400A
- Up to 65kAIC
- Remote Operated  
Circuit Breakers



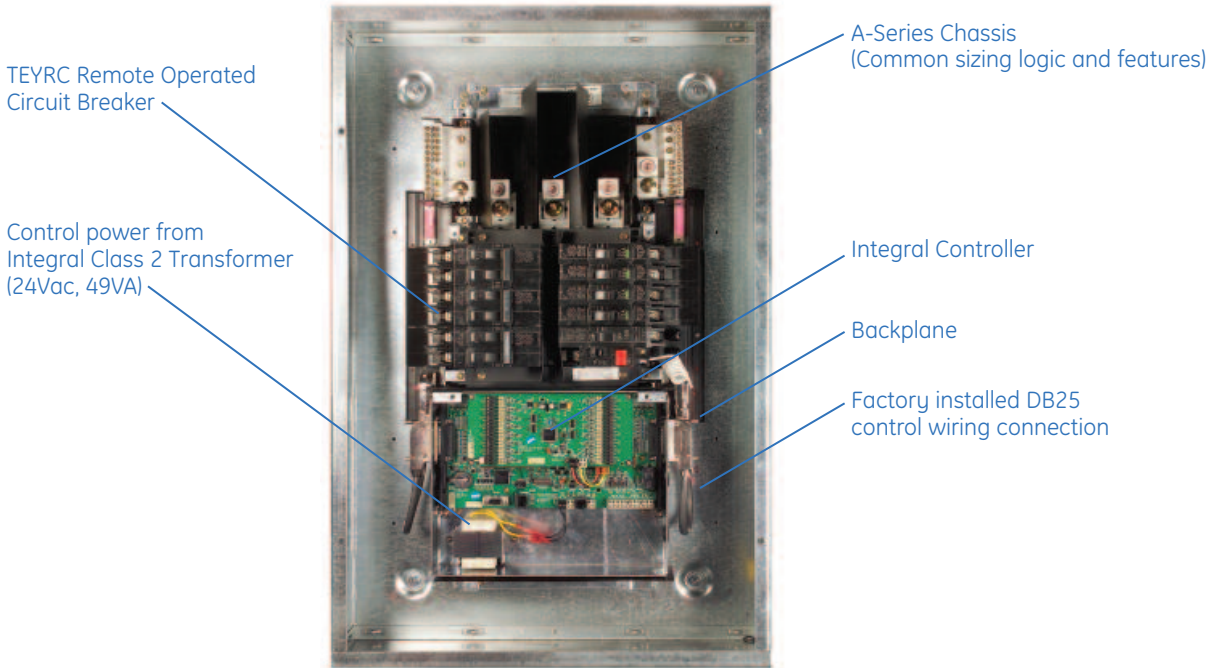
**Lighting Contactors**

- 2-12 Poles
- 30A-400A

Even though they save time, money and space, GE's integrated switchboards sacrifice nothing in terms of safety, performance or versatility. You get flexibility in design and consistency in execution. Units expand or contract to fit your needs. And not only do they reflect GE's rigorous Six Sigma quality standards, they are built and tested in accordance with NEMA PB-2, UL 891, IBC-2006, IEEE-693-2005 and the NEC. All sections and devices are UL Listed and UL Labeled.

## Save now. Save later.

Put A-Series Lighting Control Panels in your integrated switchboard and you'll save now – and for years to come. They reduce energy costs by providing programmable control of the breaker, so it will turn lights off in areas where and when they're not needed. And the panel networks easily into building automation systems.



The A-Series Lighting Control Panel in your ISB will add even more savings and simplicity with:

- A fully prewired unit to cut your installation time in half
- An open protocol, native BACnet and Modbus system for easy programming
- Flexible scheduling, including 16 time-of-day on/off settings, holiday overrides, daylight savings/leap year adjustments, and day-of-week repeating scheduling
- A self diagnostic system that feeds critical information back to you, including burnhour tracking for the breaker loads, breaker contact status and event alarms and recovery for energy management
- Compliance with the minimum national energy standard (ASHRAE-IES 90.1) required for any new building over 5,000 square feet

It's an ideal solution for retail locations, schools or just about any facility looking to save installation space and labor – and save energy for years to come.

GE Consumer & Industrial  
41 Woodford Avenue  
Plainville, CT 06062  
[www.geelectrical.com](http://www.geelectrical.com)

