

GE Consumer & Industrial

1. Description of the project

- Country:** Poland
Localisation: Warsaw
Customer: WARSAW TRAMWAYS
Project: Traction Power Substation Renovation (Full renovation with replacement of all equipment) + New Traction Power Substation (Build new tramway line with new traction)
Scope: 4 renovated substation + 1 new built

2. Requirement of the customer

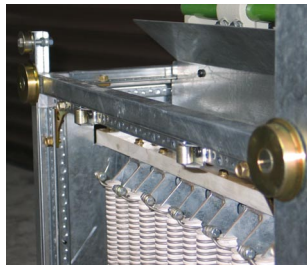
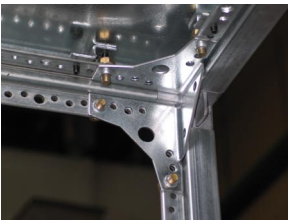
- Fully equipped 0,6kV DC switchgear
- Equipped with Electronic Traction Control System CZAT 3000plus (manufactured by ELESTER PKP-Łódź)
 - Equipped with Gerapid Breaker (new solution)
 - Withdrawable version (breaker on trolley with higher /rised/ position of weels)
 - Wallstanding version of switchgear with rear acces

3. Why a GE solution

- Long period cooperation in area of DC breakers and DC switchgears (developing) with many deliveries of old versions
- GE flexibility in technical solution and issues
- Innovative and open solutions – possibility to deliver new versions
- Quality
- Close personal cooperation and fast reaction at momennts of any technical problems

4. Key Technical Features

- Wallstanding version
- Withdrawable version (**Gerapid** breaker on trolley with higher /rised/ position of weels)
- Electronic Traction Control System CZAT 3000plus
- Construction based on Gea plus profiles



5. General Achitecture

One of five delivered in 2005 to
Warsaw Trams
DC SWITCHGEAR
type
RPSplus/WOB
to substation
„Obozowa” in Warsaw



GE imagination at work



Contact name
Jerzy Dusza
T: +48 33 8286508
E: jerzy.dusza@ge.com