

GE
Energy

Parts and Repair Services

Turbine Control and Drive Solutions



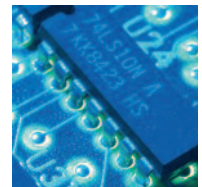
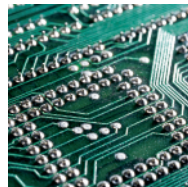
imagination at work

Reduce cost by protecting uptime and productivity.

Allow GE Energy to be your value source for dependable, quality, replacement parts and repair services for GE drives and turbine controls. Our experience, product knowledge, access to product information and support of our field and factory engineers enables us to provide prompt, comprehensive parts and services, for all your GE Energy turbine controls and industrial drives.

By trusting your parts and repair services to the original manufacturer you are ensured:

- Quality OEM replacement parts
- Complete repair solutions
- Limited 18-month warranty on repair services
- Factory developed and approved testing
- Factory-trained technicians
- One of the lowest failure statistic rates in the board repair industry
- Utilization of original factory designs, manufacturing and test facilities
- Automated test equipment ensuring repeatable and reproducible product quality
- Diagnostic test equipment certified to industry standards



Global Support

Our world class Global Customer Service and Support Center is available 24 by 7 for 365 days. We have strategic distribution centers and authorized distributors that carry extensive inventory for GE Drives and GE Turbine Controls. We support your genuine replacement part needs any time or any place.

New Replacement Parts for Drives and Turbine Controls System Performance

Genuine factory replacement parts for your GE Drives and Turbine Control systems are the best alternative for your Peace of Mind. These parts are designed and manufactured in the same factory as the original Drives and Turbine Control Systems. You are assured that the replacement parts' functionality and performance is identical to your installed system.

We have an extensive database of the original GE Drives and Turbine Control systems manufactured by GE. Provide us with the shop order number, requisition or nameplate data and our engineers will research our database to identify replacement parts, matching parts to original functionality and performance.

Remanufactured

Lower Cost Alternative to Purchasing New Parts. A cost-effective method of purchasing a remanufactured item without the need to return a defective unit. Remanufactured units are fully reconditioned, tested, repackaged and carry an 18-month limited warranty on the entire unit

Repair and Return

Most Cost-Effective Repair Option. Quality repair services on a full line of GE Energy parts, including printed circuit boards, CNC, power supplies, SCR/Diode assemblies and selected core drives. Includes an 18-month limited warranty.

Exchange

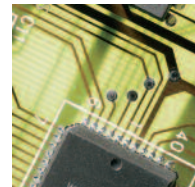
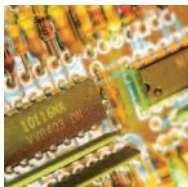
Fastest Method for Receiving a Reconditioned Board or Module. Quick access to replacement parts from our sizable stock of repaired parts inventory. Exchange parts are repaired and tested to the same standards as our Repair & Return parts. Return your defective, repairable board within 30 days of ordering to avoid being charged the purchase price of a new circuit board. Includes an 18-month limited warranty.

Test and Certification

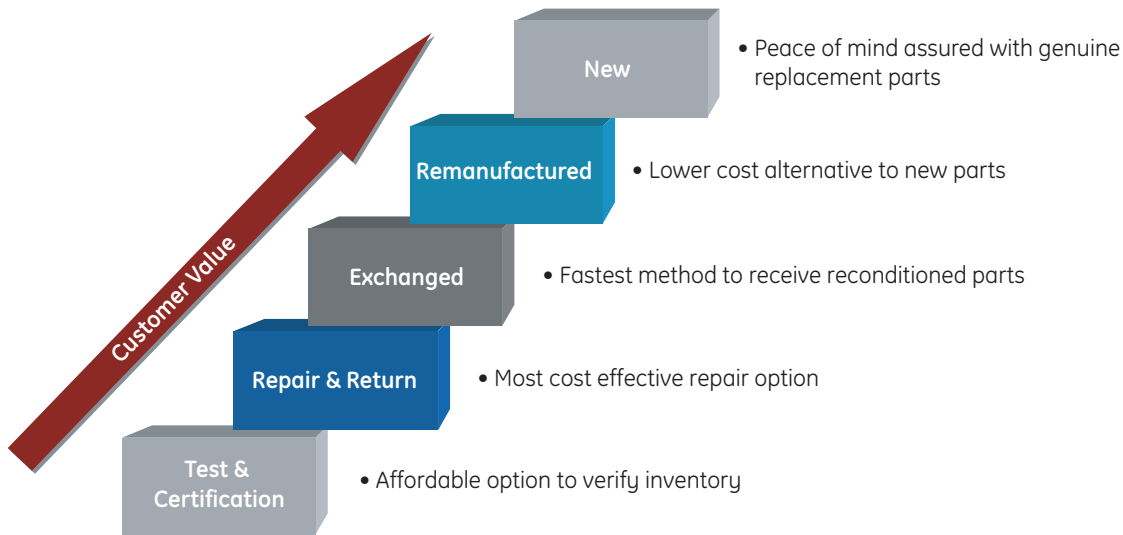
Affordable Option for Verifying Your Inventory. Ideal for customers who have circuit boards and cannot assess the boards' condition or have inventory in need of validation. No warranty available.

Part and Service Options

	Test/Certification	Repair/Return	Exchange	Remanufactured	New
GE Drives and Controls					
Drives - US and Canada	X	X	X	X	X
Turbine Controls	X	X	X	X	X
Machine Tools	X	X	X	X	X
Drive Services		X		X	
Control Components					X
GE Fanuc PLC		X			
GE Whedco Motion Control		X			
GE Multilin		X			
Allen-Bradley					
Drives		X			
PLC		X			



Select service options to create custom solutions to meet your needs.



Industries Served:

- Steel
- Metals
- Power Generation
- Pulp and Paper
- Process Lines
- General Industries
- Automotive
- Material Handling
- Mass Transit
- Railroads

To learn more about new parts please visit www.gepartsedge.com, phone 800-4GE-FAST, internationally dial 678-844-7900, contact your GE Energy sales representative or an authorized GE Energy distributor.

To learn more about GE Energy repair services phone 888-GE4-SERV, internationally dial 540-378-3280, contact your GE Energy sales representative or an authorized GE Energy distributor.



imagination at work