

Mining Services Overview

Trust in our experience

GE has been serving the mining industry for over 100 years with drive and power delivery systems and equipment, parts, repairs, and field engineering services. We are uniquely qualified to provide the expertise you need to extend the life and improve the performance of your critical equipment assets. We offer a complete range of repair and engineering services for motors, generators, drives, and mechanical mining equipment.



Field Engineering Services

- Planned and on-demand engineering services
- Modifications and upgrades
- Appraisals and studies
- Project engineering services
- Start-up and commissioning services
- Emergency and parts support — 24 x 7 x 365
- Tune-up and optimization of existing equipment to maximize performance and reliability
- Maintenance Services — technical direction only or complete maintenance services, including engineering supervision, craft labor and parts & materials



Motor & Generator Repair Services

- Visual inspection & maintenance testing
- Complete motor-generator set refurbishment
- OHV wheel motor repair, AC & DC
- OHV alternators and generators
- Exchange program for dragline and shovel components
- Upgrades/modifications
 - Increased output
 - Efficiency improvement
 - Reduced downtime



Mechanical Repair Services

- Mechanical repairs
- Machine shop
- Parts fabrication
- In-shop and on-site capability
- Equipment serviced
 - Mine hoists
 - Excavators
 - Gears
 - Gear boxes
 - Crushers
 - Pumps
 - Walking cams
 - Propel shafts



Mining Services Overview



Drives & Control Systems

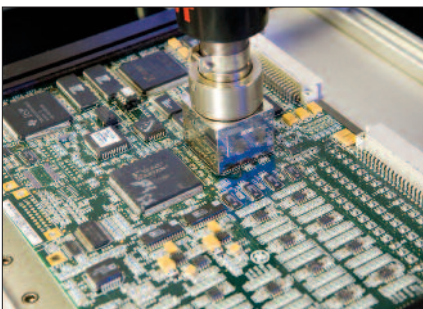
Full services across the globe:

- Support U.S. and Canadian built legacy GE drives and controls
 - Provide modifications/upgrades to existing drives and control systems
 - Provide AC and DC drive systems
 - Provide PLC/HMI Systems
 - Complete systems & field engineering capability
- GE Drives Lifecycle Extension. Refurbishment and remanufacture of:
 - Whole drives
 - Cell stack assemblies
 - Power supplies
 - Capacitor banks



Power Delivery

- Power systems studies
- Arc flash hazard analysis
- Transformer and switchgear services
 - Maintenance
 - Inspection
 - Repair
 - Upgrades
 - Transformer fluid analysis
 - Emergency replacement inventory



Equipment Parts

Periodic parts replacement is fundamental to maintaining mining equipment performance and efficiency, and reducing unnecessary unit downtime. The selection, quality, reliability and maintenance of these parts is critical to the performance of the mine. GE offers a comprehensive suite of parts services ranging from testing and certification to repair and return, to exchange to brand new parts. Let GE's parts program extend the life of your critical mining assets.



Visit us online at ge.com/energy

©2008, General Electric Company. All rights reserved.

GEA-17155 (09/08)