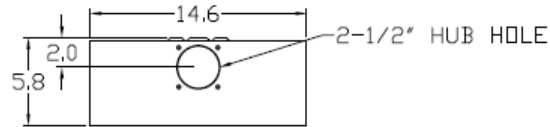


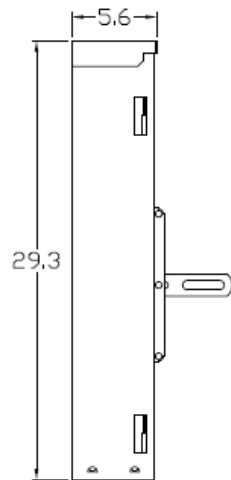
**Top View**



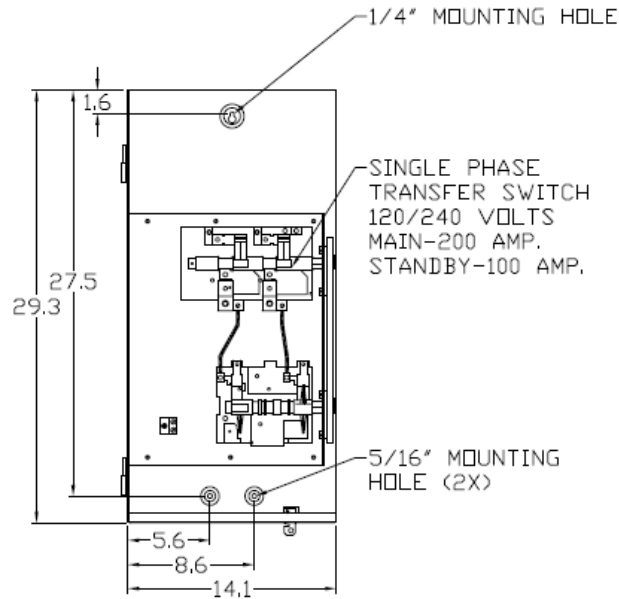
**Notes**

- USE ONE #1/0 CU/AL WIRE PER LUG FOR 100 AMP SWITCH AND ONE #6-250 MCM CU/AL WIRE PER LUG FOR 200 AMP SWITCH
- EQUIP. GRD.-#12-2 CU/AL

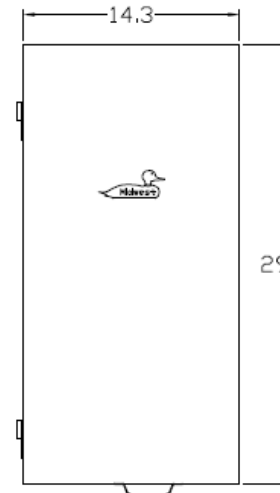
**Left Side View**



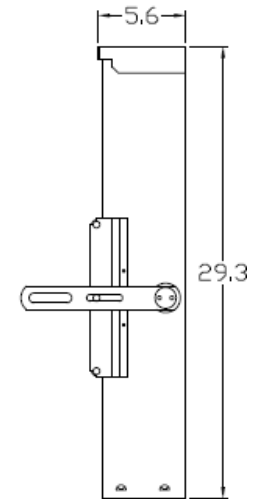
**Front View Internal**



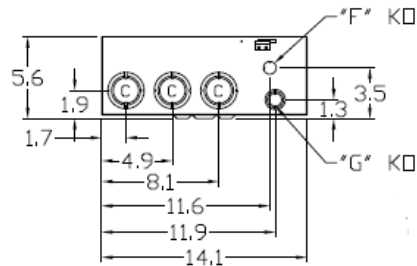
**Front View External**



**Right Side View**



**Bottom View**

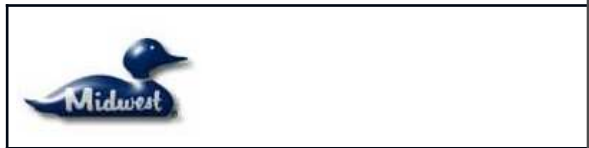


**Wire Range**

(1) #6 - 250MCM (CU/AL)

**Knockouts**

C= 1-1/4", 1-1/2", 2" K□  
 F= 1/2" K□  
 G= 1/2", 3/4", 1" K□



MIDWEST HD TRANSFER SWITCH 2P 10K 200A MAIN  
 100A STANDBY 1PH 120/240V N3R G90 STEEL ENCL

CAT NO	DWG DATE	REV #
GS1201B20UL	03/23/2017	01