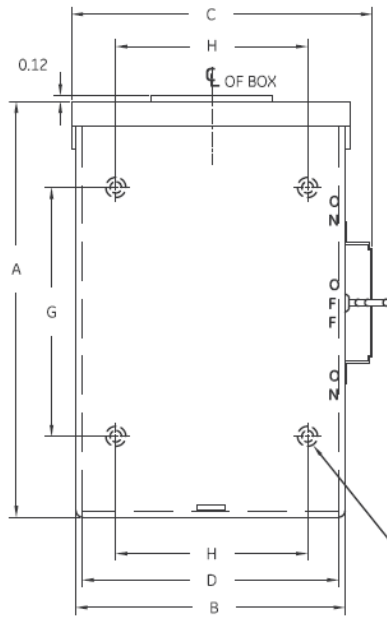
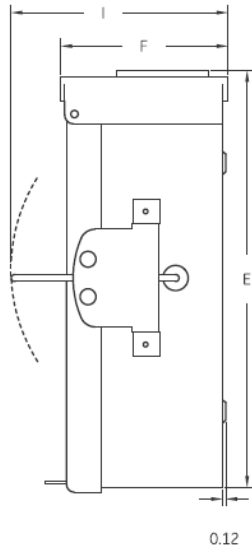


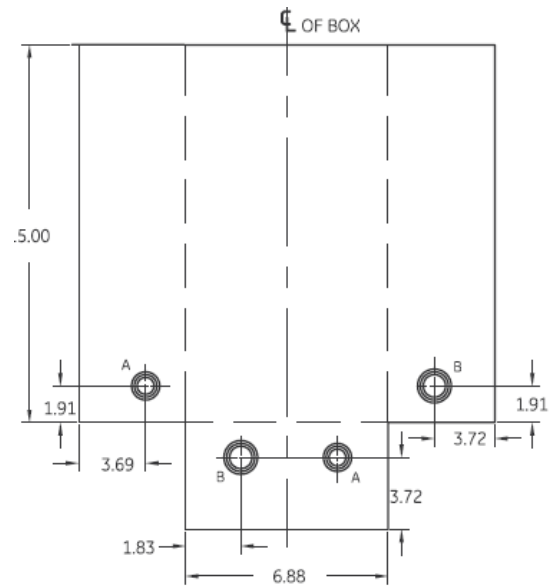
**Front View**



**Right Side View**



**Knockout View**



(4) 0.27 MTG. HOLES



**DIMENSION TABLE**

GCAT NO.	MOD.	FIG	KO VIEW	A	B	C	D	E	F	G	H	I
GS3161G	10	1	1	15.13	7.20	8.18	6.99	15.35	5.22	9.00	5.50	8.54

**Knockouts**

SYM.	SIZE	QTY.	
		VIEW 1	VIEW 2
A	3/4 X 1 X 1 1/4 X 1 1/2 KO	2	-
B	1 X 1 1/4 X 1 1/2 X 2 KO	2	-
C	1 X 1 1/2 X 2 X 2 1/2 KO	-	2

**Notes**

1. ALL DIMENSIONS ARE IN INCHES.
2. ALL DIMENSIONS HAVE  $\pm 0.125$  TOLERANCE.

**Wire Range**

(1) #14 - 1/0 (CU/AL)



MIDWEST GD TRANSFER SWITCH 2P 10K 200A MAIN  
200A STANDBY 1PH 120/240V N3R ALUMINUM ENCL

CAT NO	DWG DATE	REV #
GS3161G	03/23/2017	01