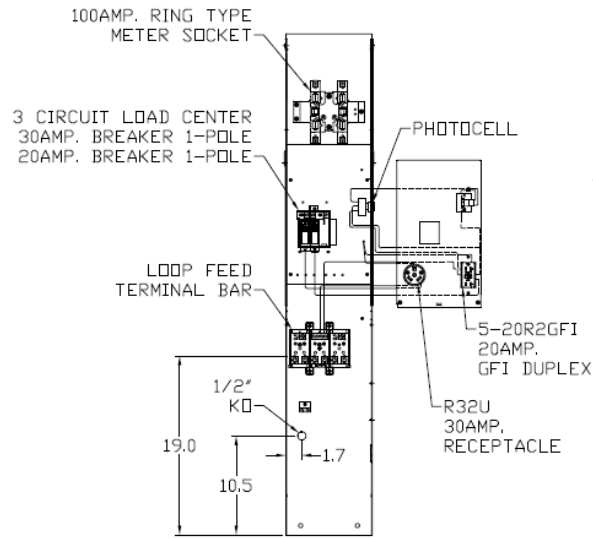
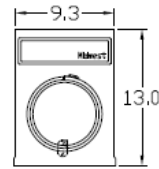


**Front View Interior**

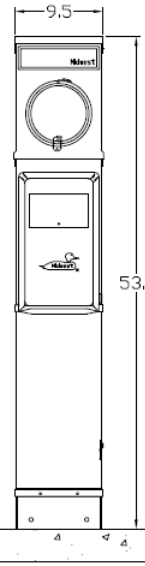
**Front View Inside Cover**



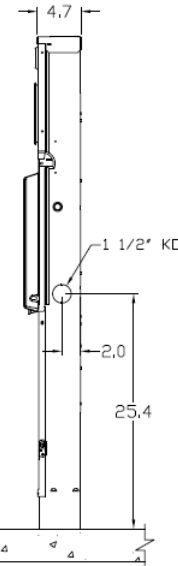
**Front View External # 1**



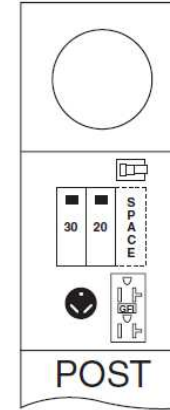
**Front View External # 2**



**Side View**



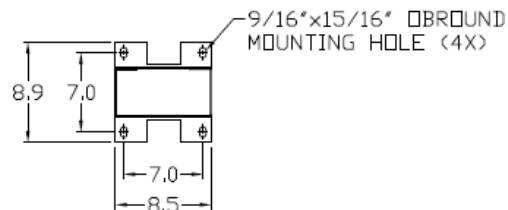
**Configuration**



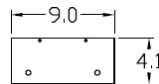
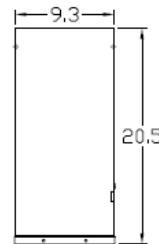
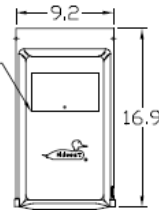
**Wire Range Size**

CONNECTOR	COPPER		ALUMINUM	
	SOLID	STRAND	SOLID	STRAND
LINE	---	6-1/0	---	6-1/0
LOAD	14-10	14-10	---	---
NEUTRAL LARGE HOLE	12-8	12-1/0	10-8	10-1/0
NEUTRAL SMALL HOLE	14-8	14-4	12-8	12-4
POST LINE CONNECTORS SUITABLE FOR LOOP FEED	#6-350 KCMIL		#6-350 KCMIL	
EQUIP. GRND, PDST	14-2/0	14-2/0	14-2/0	14-2/0

**Bottom View**



6"X4" LENS



**Receptacles**

R32U
5-20R2GFCI

**Circuit Protection**

THQL1130
THQL1120
Space THQL1120



MIDWEST RV EQUIP METALLIC 100A LIGHTED PAD MNT PED RING MTR 30/20A GFI RECP 120V 1PH3W UL LISTED G90 N3R

CAT NO	DWG DATE	REV #
M041CP4L10	04/13/2017	01

**NOTES: PAD MOUNTED POST**