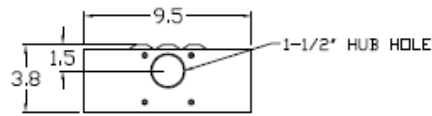
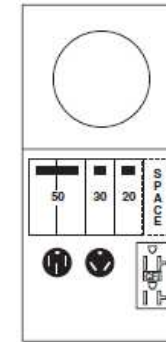


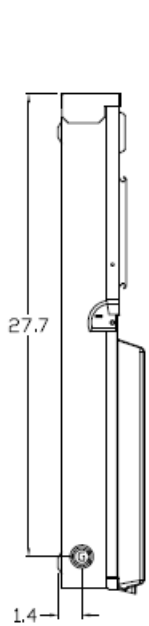
Top View



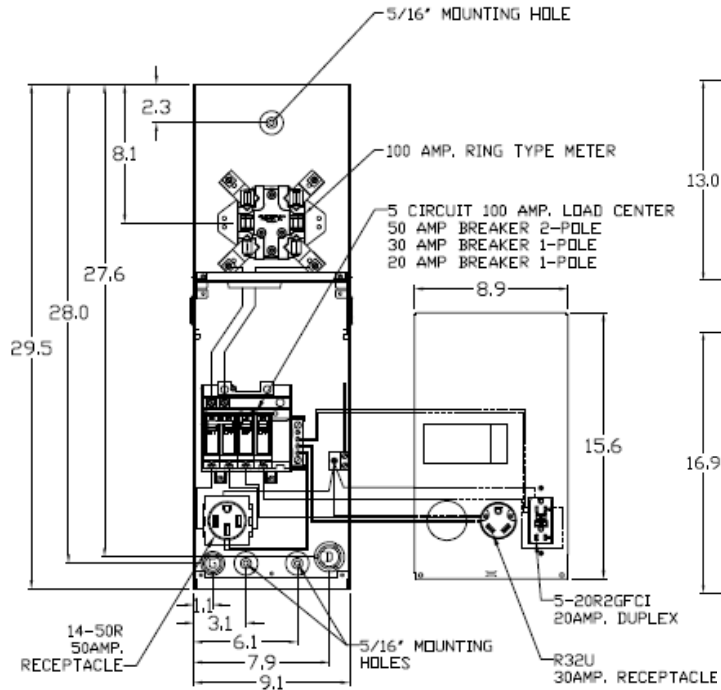
Configuration



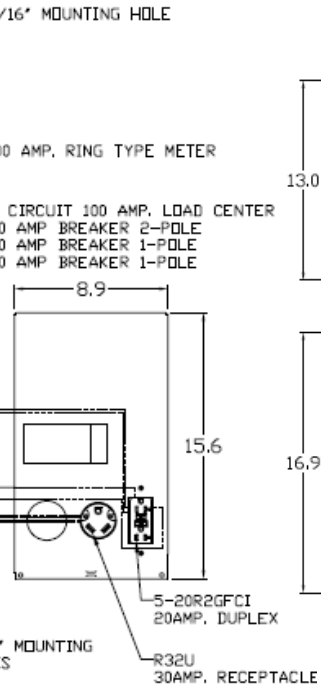
Left Side View



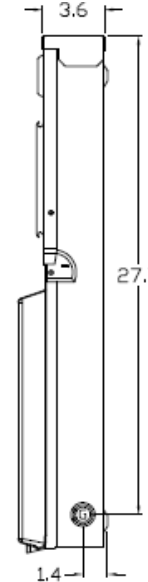
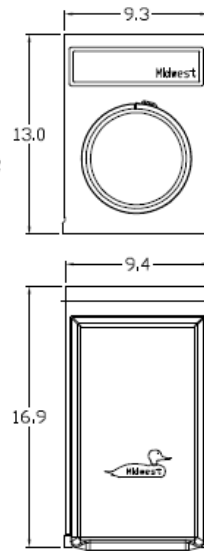
Front View Interior



Front View Inside Cover



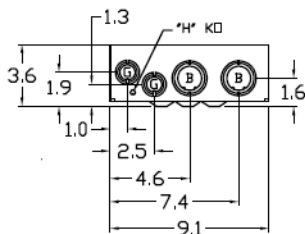
Front View External



Wire Range Size

| Connector | Copper | | Aluminum | |
|---|--------|----------|----------|----------|
| | Solid | Stranded | Solid | Stranded |
| Line | ---- | 6-1/0 | ---- | 6-1/0 |
| Load | 14-10 | 14-10 | ---- | ---- |
| Neutral | 12-8 | 12-1/0 | 10-8 | 10-1/0 |
| Post Line Connectors Suitable For Loop Feed | 14-8 | 14-4 | 12-8 | 12-4 |
| Equip. Ground Post | 12-8 | 12-2 | 12-8 | 12-2 |

Bottom View



Knockouts

- G= 1/2", 3/4", 1" KØ
- B= 1", 1-1/4", 1-1/2" KØ
- D= 3/4", 1", 1-1/4" KØ
- H= 9/32" KØ

Receptacles

| |
|------------|
| BR54U |
| BR32U |
| 5-20R2GFCI |

Circuit Protection

| |
|-----------------------------|
| THQL2150 |
| THQL1130 |
| THQL1120, SPACE THQL1120 |

MIDWEST RV EQUIP METALLIC 100A SURFACE RING MTR
50/30/20A GFI RECPT 120V 1PH3W UL LISTED G90 N3R

| CAT NO | DWG DATE | REV # |
|----------|------------|-------|
| M075C010 | 02/11/2016 | 01 |