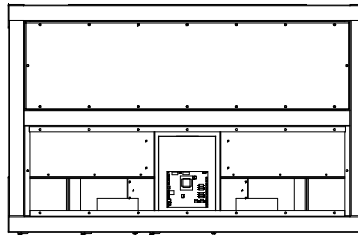
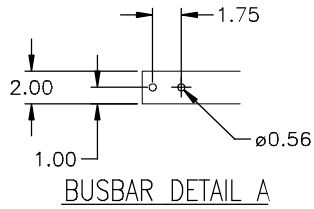


# 750 KVA GE ZENITH SERIES MDU HIGH POWER

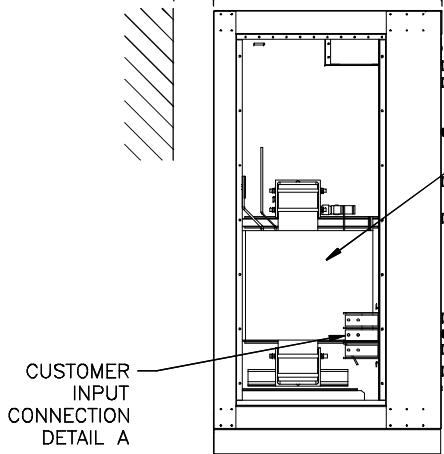
REVISIONS				
REV	SHT	DESCRIPTION	DATE	APPROVED
X0		INITIAL SUBMITTAL	1/22/13	IK



MIN. REQUIRED CLEARANCE  
REAR/SIDE PANELS

MIN. REQUIRED CLEARANCE  
FRONT DOOR

6.00 MIN      42.00      36.00 MIN



MONITOR

TRANSFORMER  
750 KVA

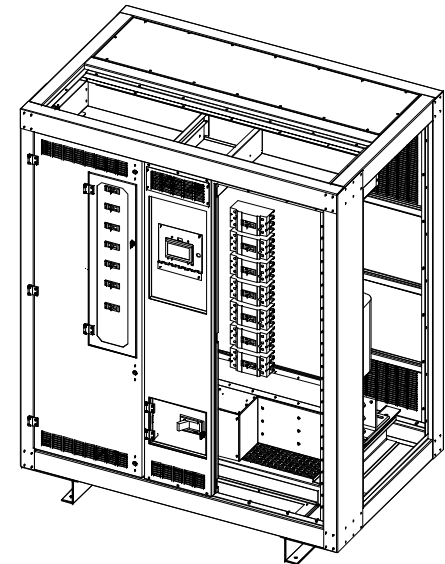
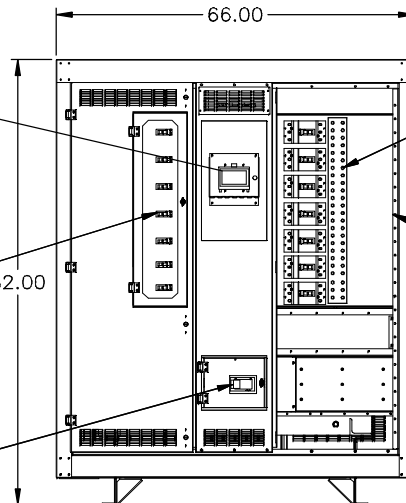
CIRCUIT  
BREAKERS  
SEE PAGE 2  
FOR DETAILS

CUSTOMER  
INPUT  
CONNECTION  
DETAIL A

INPUT  
CIRCUIT  
BREAKER

NEUTRAL BUS  
BOTH SIDES

GROUND BUS  
BOTH SIDES

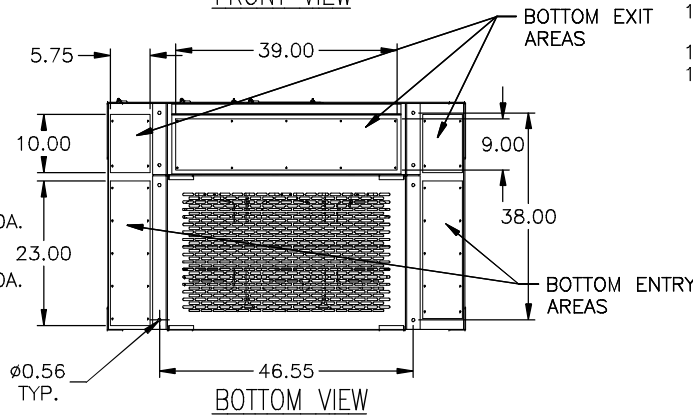


SIDE VIEW

FRONT VIEW

**NOTES:**

1. ALL DIMENSIONS ARE IN INCHES.
2. PDU COLOR: IBM PEARL WHITE
3. INPUT CB MAX CABLE SIZE  
RECOMMENDED: (2) X 750MCM.  
MAXIMUM CONDUIT SIZE = (2) 3.00".
4. 225A-250A CB OUTPUT CB MAX CABLE SIZE  
RECOMMENDED: (1) X 4/0 225A CB, (1) X 250MCM 250A.  
MAXIMUM CONDUIT SIZE = (1) 2-1/2".
5. 400A-600 CB OUTPUT CB MAX CABLE SIZE  
RECOMMENDED: (2) X 4/0 400A CB, (2) X 350MCM 600A.  
MAXIMUM CONDUIT SIZE = (2) 2-1/2".
6. BOTTOM ENTRY STANDARD ADDED.  
TOP ENTRY WITH SIDE BUSBARS OPTIONAL:  
RIGHT OR LEFT SIDE.
7. BOTTOM EXIT STANDARD.  
TOP EXIT DEPENDING ON CONFIGURATION.



8. CONSULT NEC AND LOCAL REGULATIONS.
9. FRONT 36.00 IN CLEARANCE REQUIRED FOR MAINTENANCE.
10. ALL CUSTOMER SUPPLIED CABLE CONNECTION  
BASED ON 75°C COPPER WIRE.
11. SIDE AND REAR 6.00 IN CLEARANCE REQUIRED FOR VENTILATION.
12. WEIGHT APPROX: 6750 LBS. MAX.

THIS DRAWING CONTAINS CONFIDENTIAL & PROPRIETARY INFORMATION AND SHALL NOT BE DISCLOSED OR COPIED WITHOUT THE EXPRESSED, WRITTEN PERMISSION OF GENERAL ELECTRIC CO.		 GE Critical Power	
DO NOT SCALE DRAWING		TITLE: 750 KVA GE ZENITH SERIES MDU HIGH POWER	
APPROVALS		DATE	
DRAWN	JS	1/22/13	
DESIGNED	JS	1/22/13	
CHECKED	IK	1/22/13	
ENG. APPR.			
MFG. APPR.	-	00/00/00	
SCALE: NONE		PART NO.	