

Salem Hospital Regional Health Service

Entellisys™ Low-Voltage Switchgear

End User

Salem Hospital Regional Health Service
665 Winter Street SE
Salem, OR 97309-5014

Consultant

Smith Seckman Reid, Inc.
Tony Johnson/Russ Murdock
2995 Sidco Drive
Nashville, TN 37204

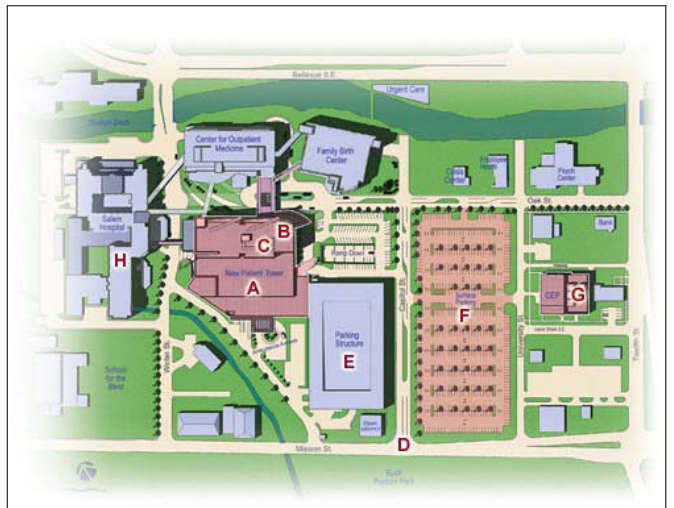
Electrical Contractor

Cherry City Electric
1596 22nd Street SE
Salem, OR 97302

Project Description

The Salem Hospital expansion will provide top-quality healthcare to the community for the next 50 years and beyond. It comprises a new patient tower, three new sky bridges that connect buildings, a new parking lot and the new Central Energy Plant (CEP), where the Entellisys equipment is located. The CEP provides the power needs for most of the campus. The hospital expansion will feature:

- Private, adaptable patient rooms
- Operating rooms become interventional suites
- Information technology plays a vital role
- Environmentally responsible healing environments
- Evidence-based design throughout



Customer Needs

The customer needed a solution that would focus on system safety and reliability, including:

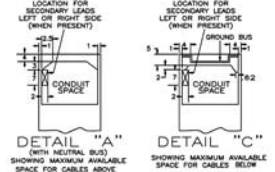
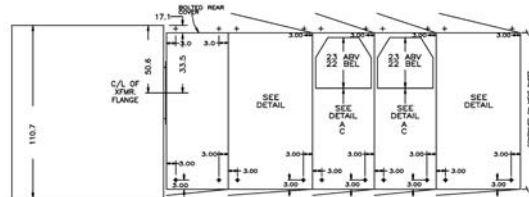
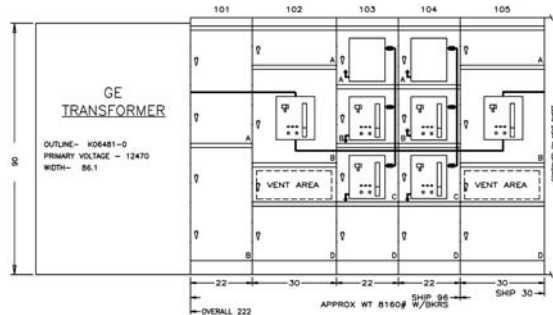
- Provide a safe environment for maintenance personnel who need to work on the equipment by reducing the arc-flash hazard
- Allow monitoring and alerts of faults remotely so that downtime can be minimized
- Provide easy-to-understand diagnostic information so that a fault can be identified and cleared quickly
- Built-in selective coordination to minimize the impact of faults on the overall electrical power system

Solution

GE provided the Entellisys Low-Voltage Switchgear system and other equipment to meet the safety and reliability needs identified by the customer.

System Solution

- Entellisys Low-Voltage Switchgear
- Energy Commander™ Paralleling Switchgear
- POWER/VAC Medium Voltage Switchgear
- Evolution Series E9000™ Motor Control Centers
- Full start-up and commissioning services



The Entellisys system included the following options

- A Near-Gear Human Machine Interface (HMI) to allow operators to work safer away from the live equipment
- Bus differential and dynamic Zone Selective Interlocking (ZSI)
- Waveform capture tool to make it easier to identify and correct faults
- Harmonic metering
- Remote monitoring and communication, including remote alarm indication

GE Consumer & Industrial
41 Woodford Avenue
Plainville, CT 06062

www.geelectrical.com

