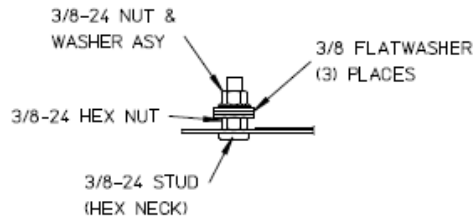


### Side View

### Front View

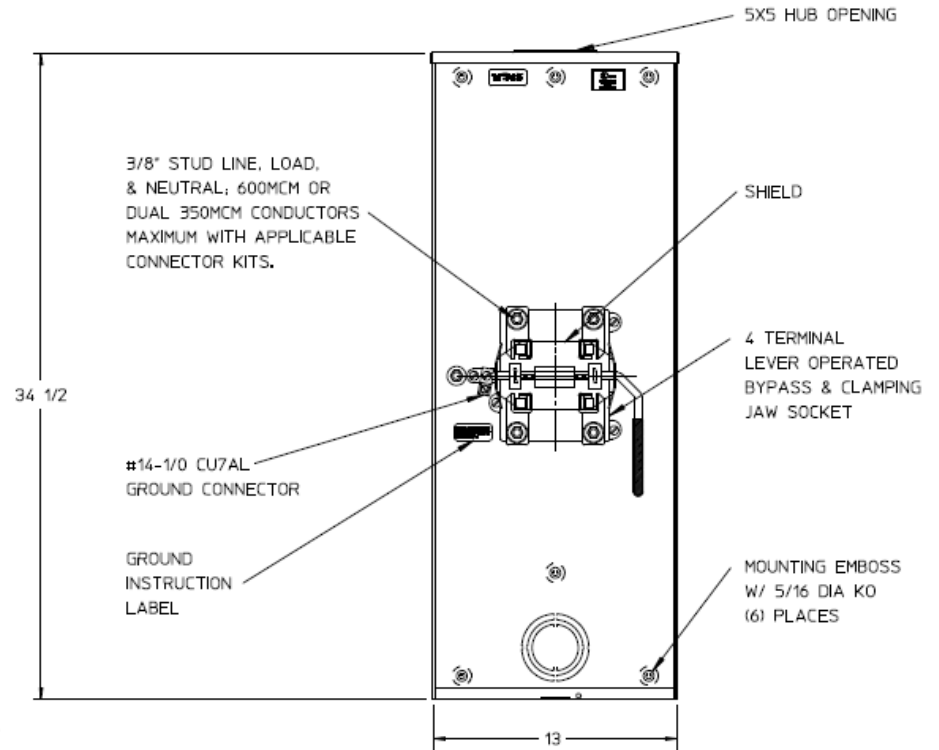
#### Neutral Stud Detail



3, 2-1/2, 2 KO  
(6) PLACES

4 15/16

STAINLESS  
STEEL  
RIBBON SEAL  
ROTARY LATCH



34 1/2

3/8" STUD LINE, LOAD,  
& NEUTRAL; 600MCM OR  
DUAL 350MCM CONDUCTORS  
MAXIMUM WITH APPLICABLE  
CONNECTOR KITS.

#14-1/0 CU7AL  
GROUND CONNECTOR

GROUND  
INSTRUCTION  
LABEL

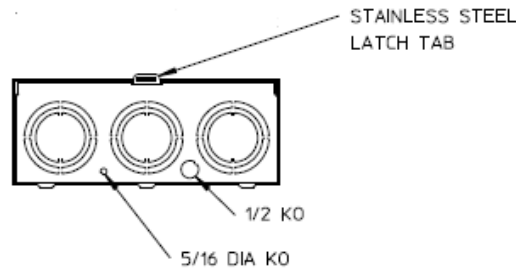
MOUNTING EMBOSS  
W/ 5/16 DIA KO  
(6) PLACES

13

### Notes

- 1) FINISH: GRAY
- 2) CABINET: 16GA GALV. STEEL
- 3) 320AMP CONTINUOUS  
600 VAC, 1 PHASE, 3-WIRE  
320AMP BYPASS
- 4) MIDWEST LABEL ATTACHED TO  
THE END OF THE CARTON.
- 5) TEMPORARY CARDBOARD METER OPENING  
COVER PROVIDED.
- 6) MIDWEST LOGO STAMPED IN THE  
LOWER LEFT-HAND CORNER OF FRONT.

### Bottom View



METER SKT-(1) 320A 600V 1P3W G90 N3R 4-TRM LARGE HUB  
OPNG TOP/BOT FEED LVR BYP TPLX GRD MEG APPROVED

CAT NO	DWG DATE	REV #
UTH4300TFLMEP	06/15/2016	01