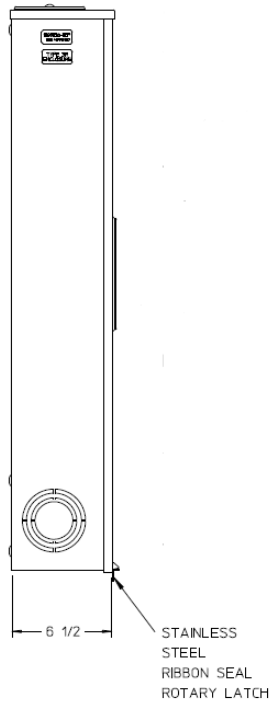
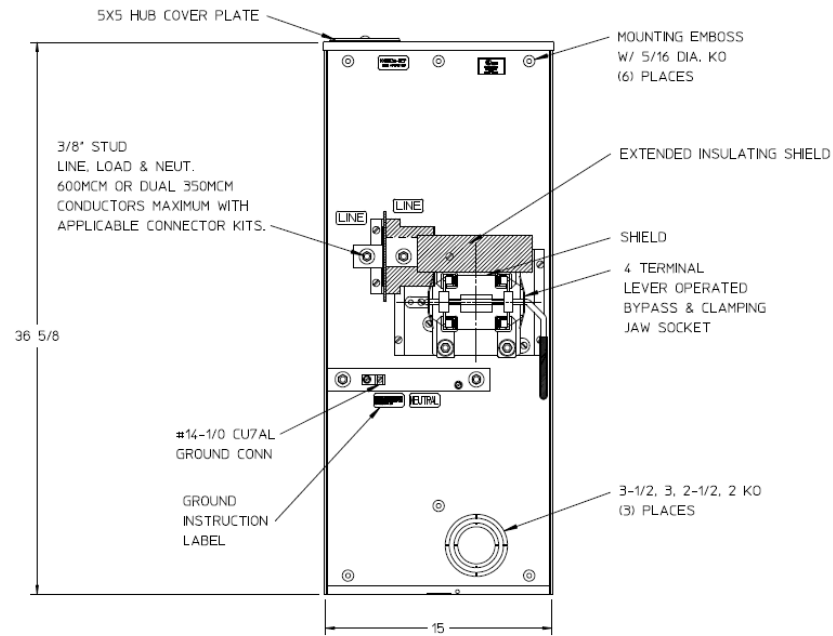


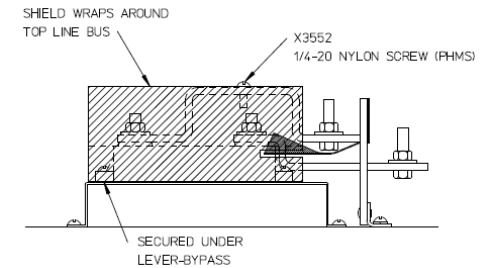
Left Side View



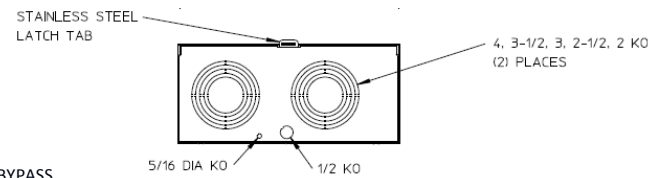
Front View Interior



Line Bus Detail View



Bottom View



Notes

- 1) PAINT: GRAY
- 2) CABINET: 16 GA GALV STEEL
- 3) 320 AMP CONTINUOUS, 600 VAC, 1 PHASE, 3 WIRE, 320 AMP BYPASS
- 4) GE LABEL ATTACHED TO THE END OF THE CARTON
- 5) TEMPORARY CARDBOARD METER OPENING COVER PROVIDED
- 6) GE LOGO STAMPED ON LOWER LEFT HAND CORNER OF THE FRONT



imagination at work

METER SKT-(1) 320A 600V 1P3W G90 N3R 4-TRM TPLXGRD
LARGE HBCVRPLT LVR BYP TOP/BOT FED MEG APPROVED

CAT NO	DWG DATE	REV #
1008836GE	05/11/2016	02