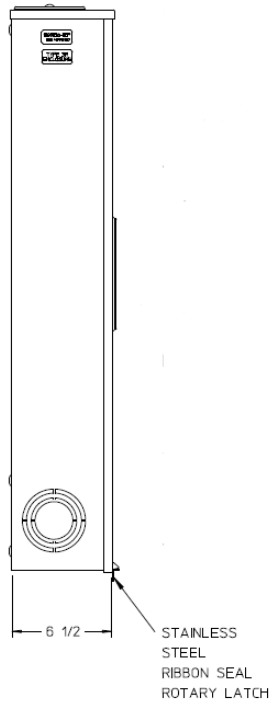
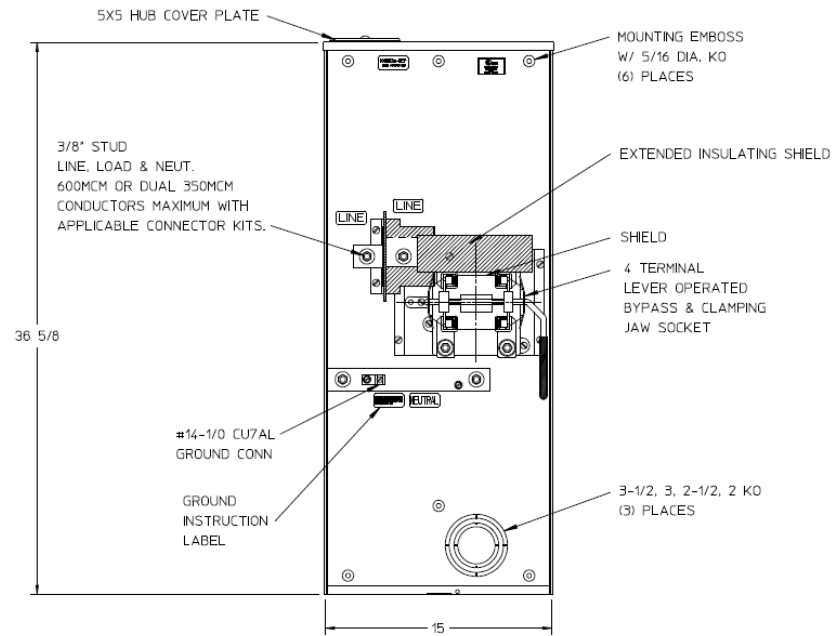


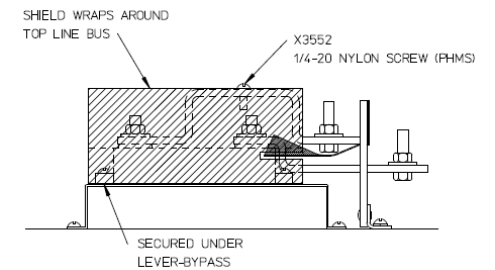
Left Side View



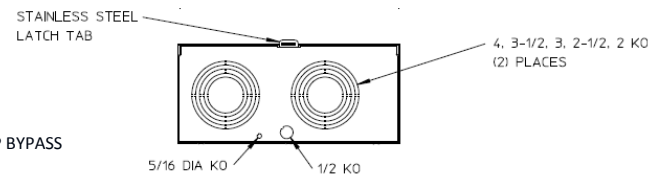
Front View Interior



Line Bus Detail View



Bottom View



Notes

- 1) PAINT: NATURAL
- 2) CABINET: .080 ALUMINUM
- 3) 320 AMP CONTINUOUS, 600 VAC, 1 PHASE, 3 WIRE, 320 AMP BYPASS
- 4) GE LABEL ATTACHED TO THE END OF THE CARTON
- 5) TEMPORARY CARDBOARD METER OPENING COVER PROVIDED
- 6) GE LOGO STAMPED ON LOWER LEFT HAND CORNER OF THE FRONT



imagination at work

METER SKT 1-320A 600V 1P3W ALUM N3R 4-TERM TPLX GRD
LARGE HUBCVRPL LVR BYP TOP/BOT FED MEG APPROVED

| CAT NO | DWG DATE | REV # |
|-----------|------------|-------|
| 1008837GE | 05/11/2016 | 02 |