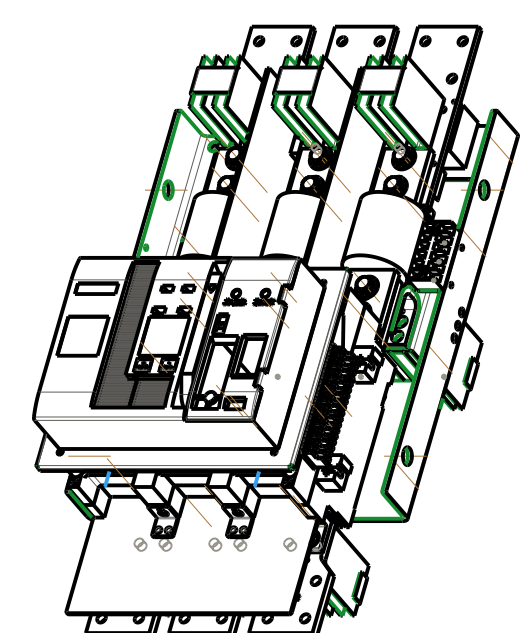
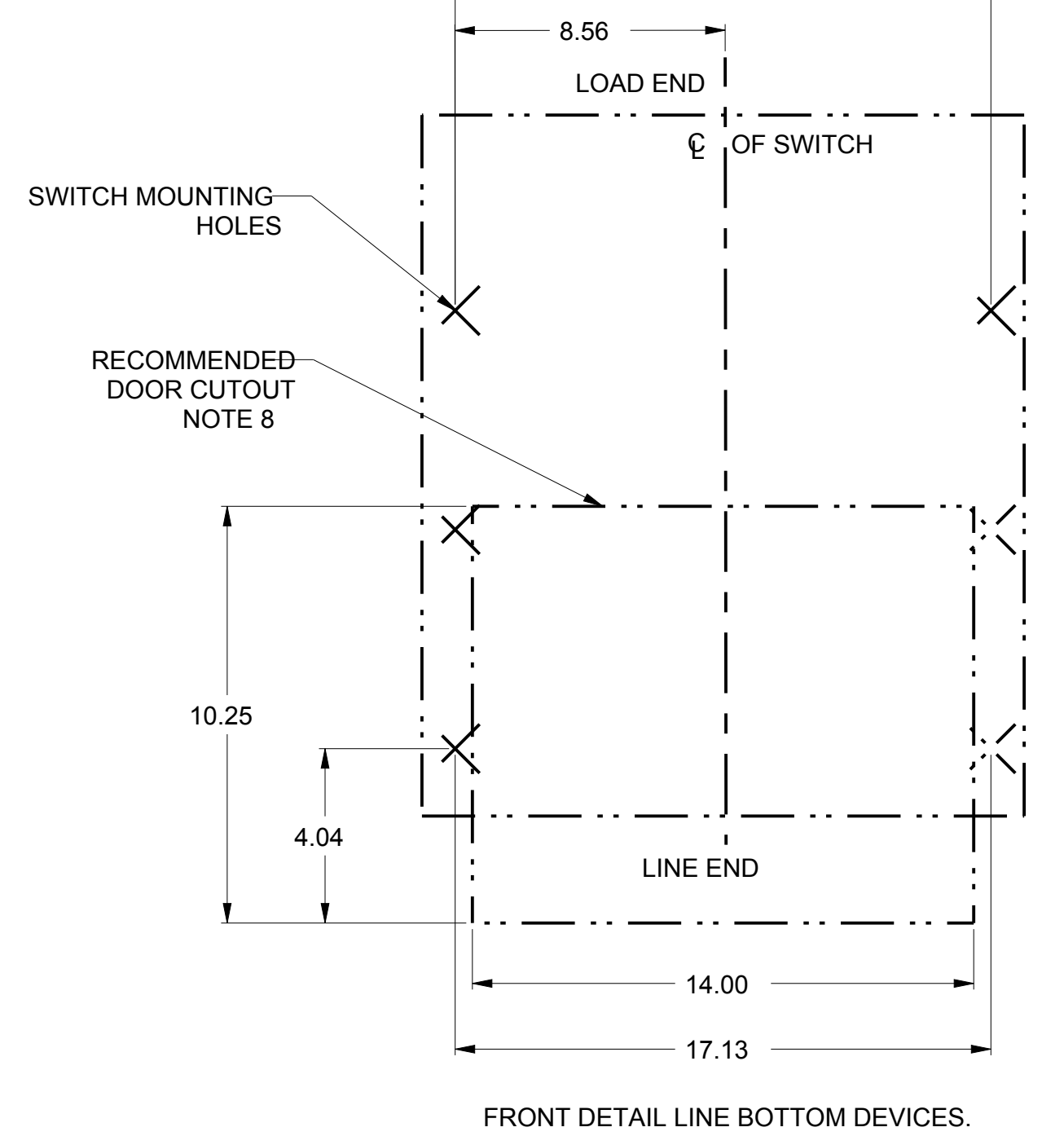
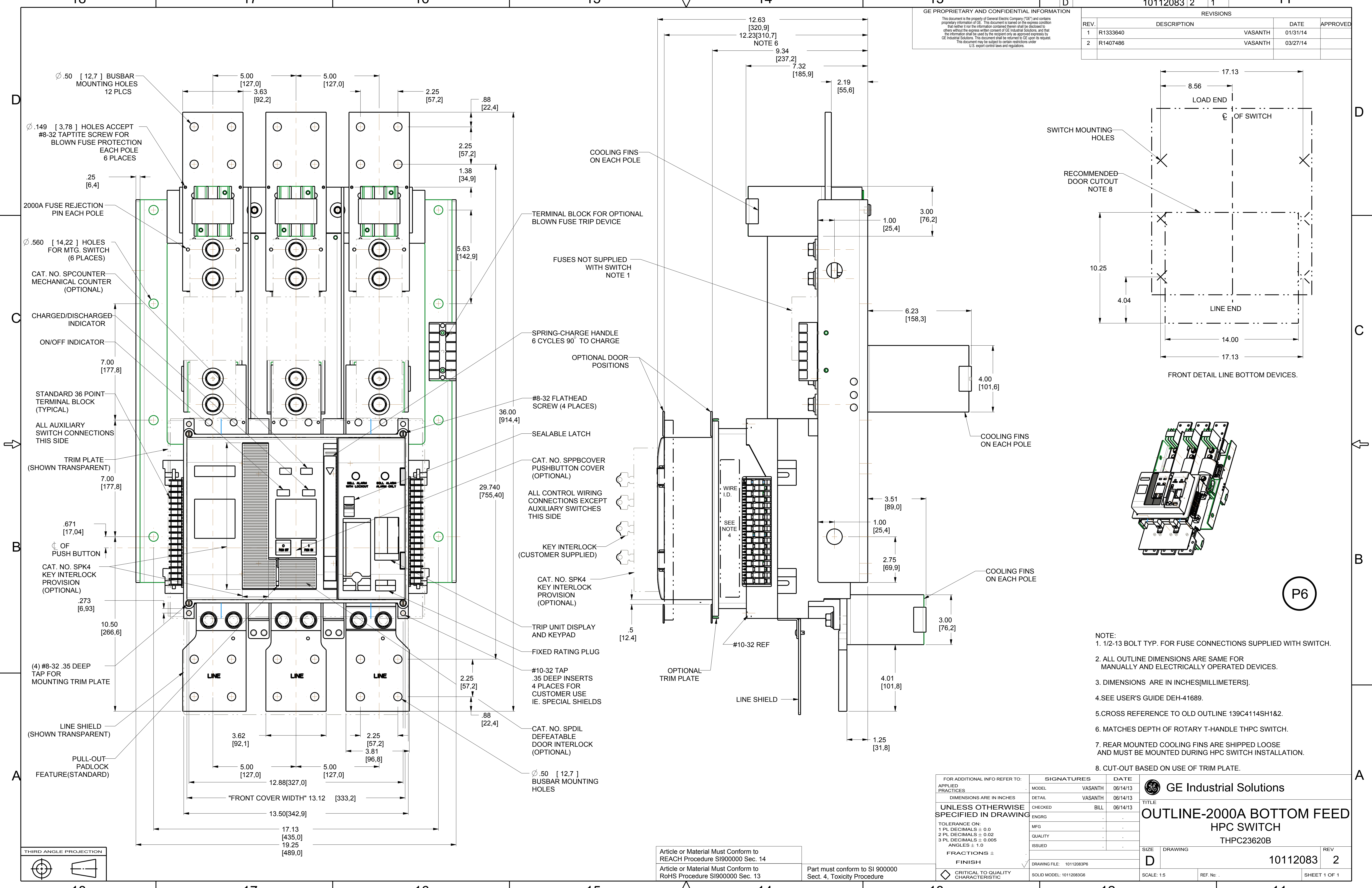


GE PROPRIETARY AND CONFIDENTIAL INFORMATION
 This document is the property of General Electric Company ("GE") and contains proprietary information of GE. This document is loaned on the express condition that neither it nor the information contained therein shall be disclosed to others without the express written consent of GE Industrial Solutions, and that the information shall be used by the recipient only as approved expressly by GE Industrial Solutions. This document shall be returned to GE upon its request. This document may be subject to certain restrictions under U.S. export control laws and regulations.

DRAWING NO.		REV		SHEET	
10112083		2	1	11	
REVISIONS		DATE	APPROVED		
REV.	DESCRIPTION				
1	R1333640	VASANTH	01/31/14		
2	R1407486	VASANTH	03/27/14		



- NOTE:
- 1/2-13 BOLT TYP. FOR FUSE CONNECTIONS SUPPLIED WITH SWITCH.
 - ALL OUTLINE DIMENSIONS ARE SAME FOR MANUALLY AND ELECTRICALLY OPERATED DEVICES.
 - DIMENSIONS ARE IN INCHES(MILLIMETERS).
 - SEE USER'S GUIDE DEH-41689.
 - CROSS REFERENCE TO OLD OUTLINE 139C4114SH1&2.
 - MATCHES DEPTH OF ROTARY T-HANDLE THPC SWITCH.
 - REAR MOUNTED COOLING FINS ARE SHIPPED LOOSE AND MUST BE MOUNTED DURING HPC SWITCH INSTALLATION.
 - CUT-OUT BASED ON USE OF TRIM PLATE.

FOR ADDITIONAL INFO REFER TO:		SIGNATURES		DATE
APPLIED PRACTICES	MODEL	VASANTH	06/14/13	
DIMENSIONS ARE IN INCHES	DETAIL	VASANTH	06/14/13	
UNLESS OTHERWISE SPECIFIED IN DRAWING	CHECKED	BILL	06/14/13	
TOLERANCE ON:	ENGRG			
1 PL DECIMALS ± 0.0	MFG			
2 PL DECIMALS ± 0.02	QUALITY			
3 PL DECIMALS ± 0.005	ISSUED			
ANGLES ± 1.0				
FRACTIONS ±				
FINISH				
CRITICAL TO QUALITY CHARACTERISTIC	DRAWING FILE:	10112083P6		
	SOLID MODEL:	10112083G6		

GE Industrial Solutions		TITLE	
OUTLINE-2000A BOTTOM FEED HPC SWITCH		THPC23620B	
SIZE	DRAWING	10112083	REV 2
D	SCALE: 1:5	REF. No.:	SHEET 1 OF 1

Article or Material Must Conform to REACH Procedure SI900000 Sec. 14
 Article or Material Must Conform to RoHS Procedure SI900000 Sec. 13
 Part must conform to SI 900000 Sect. 4, Toxicity Procedure

