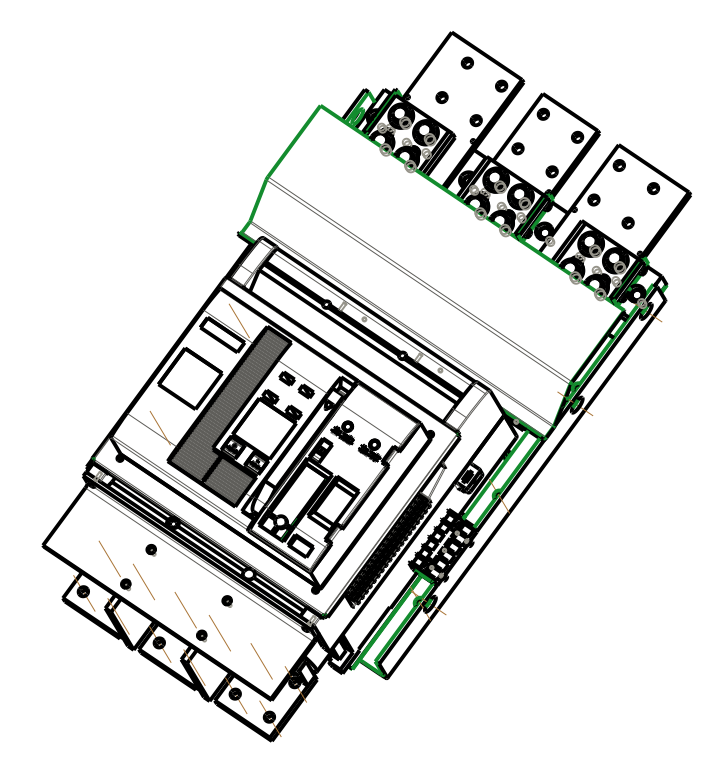
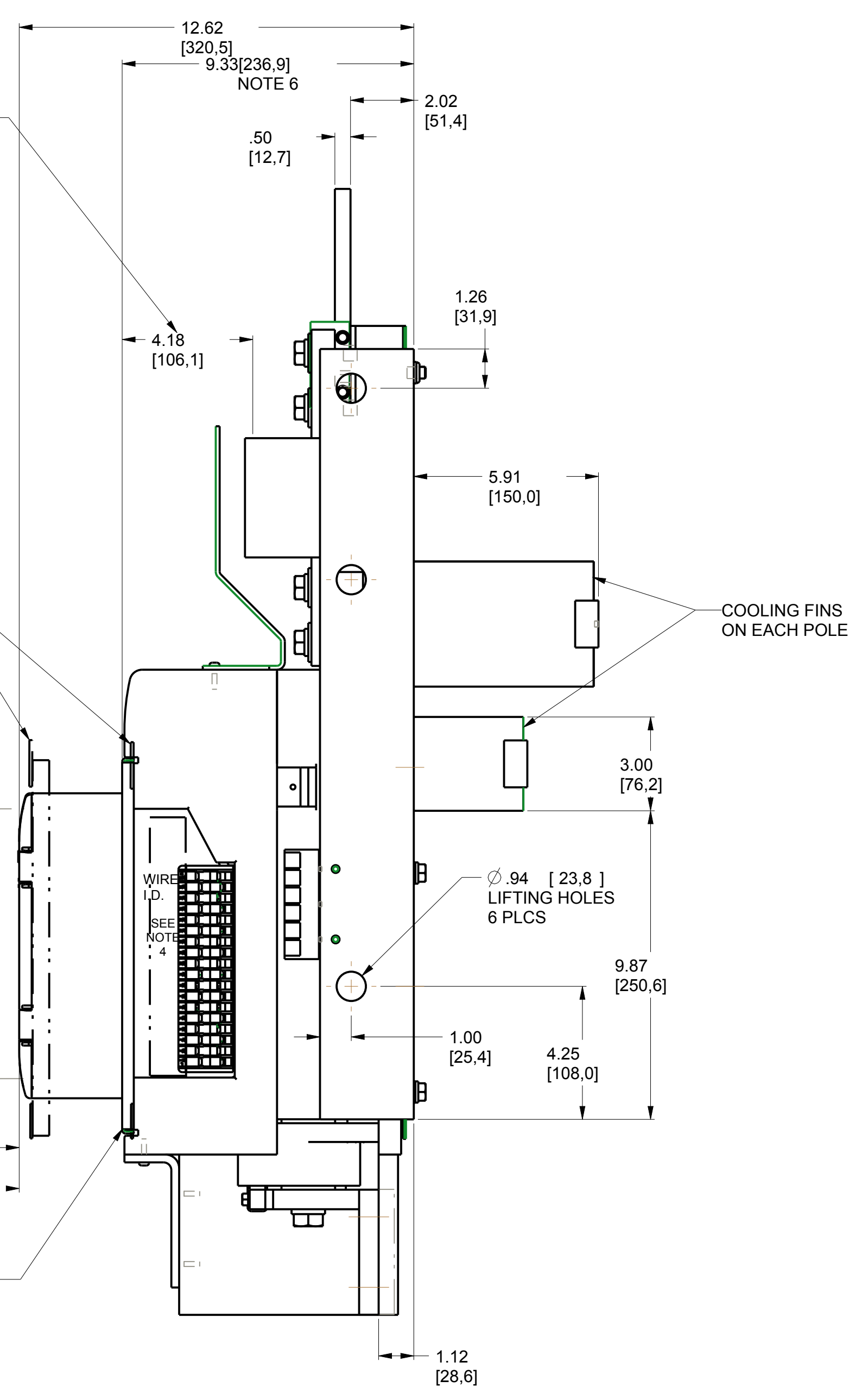
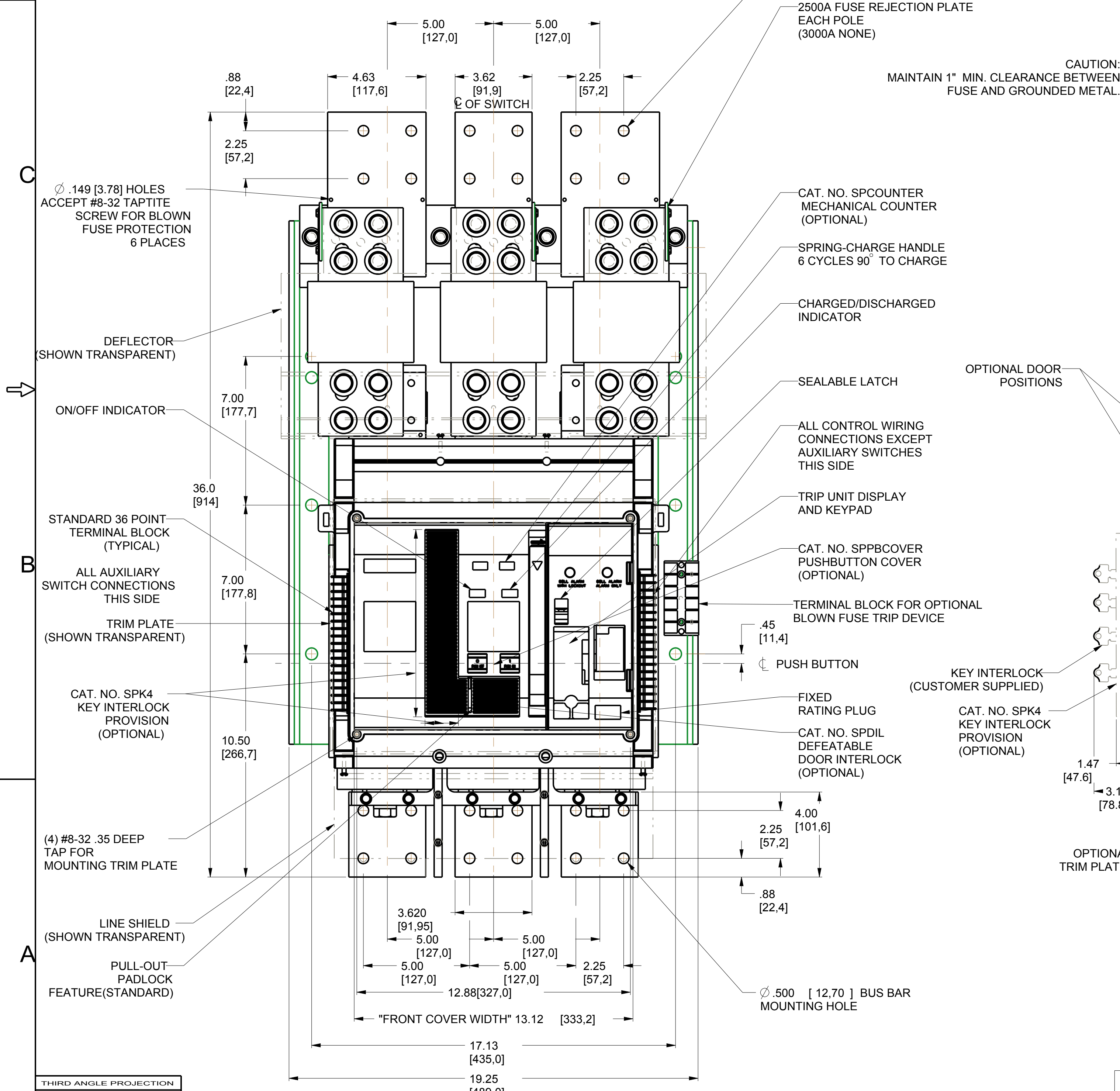
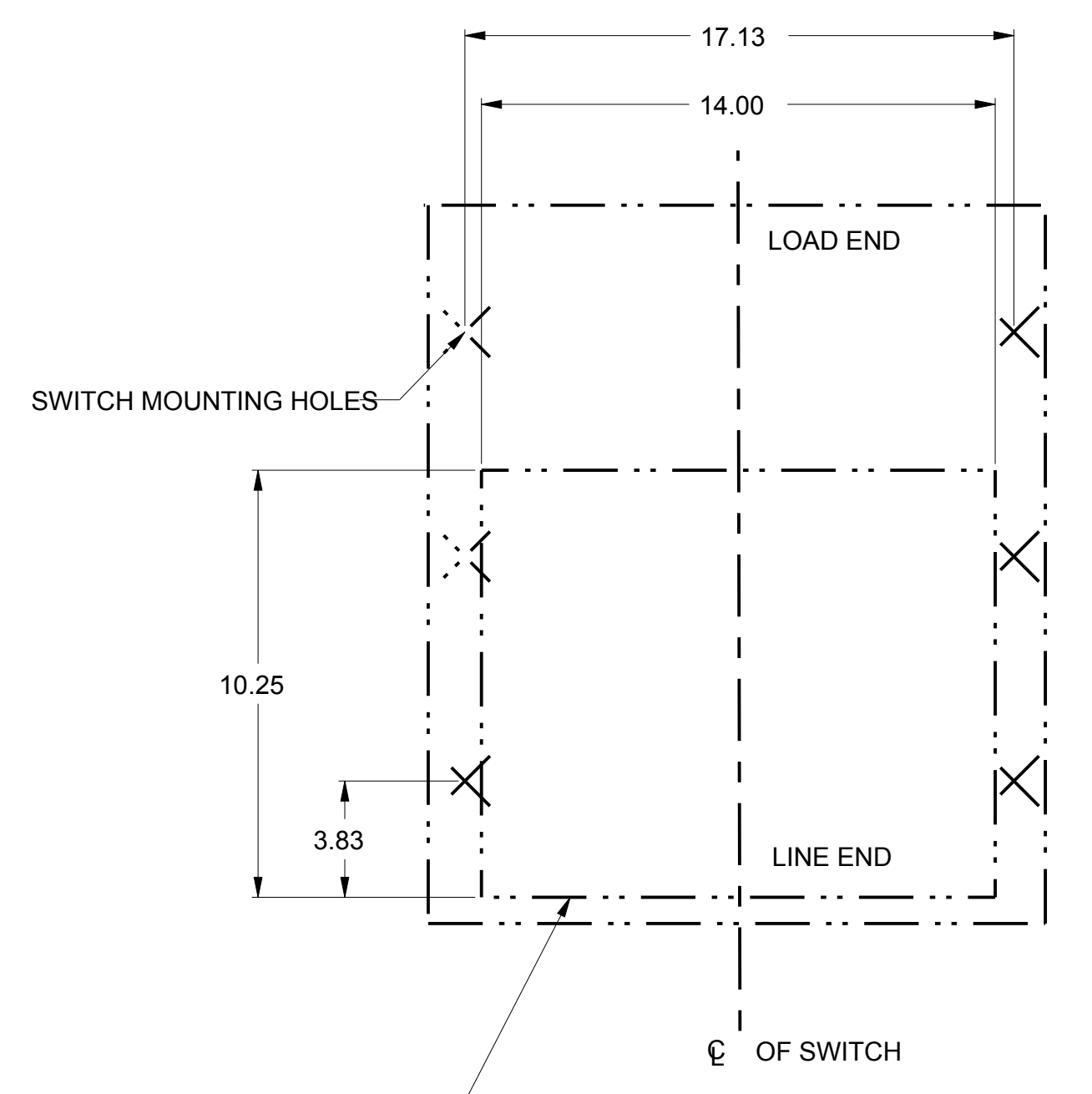
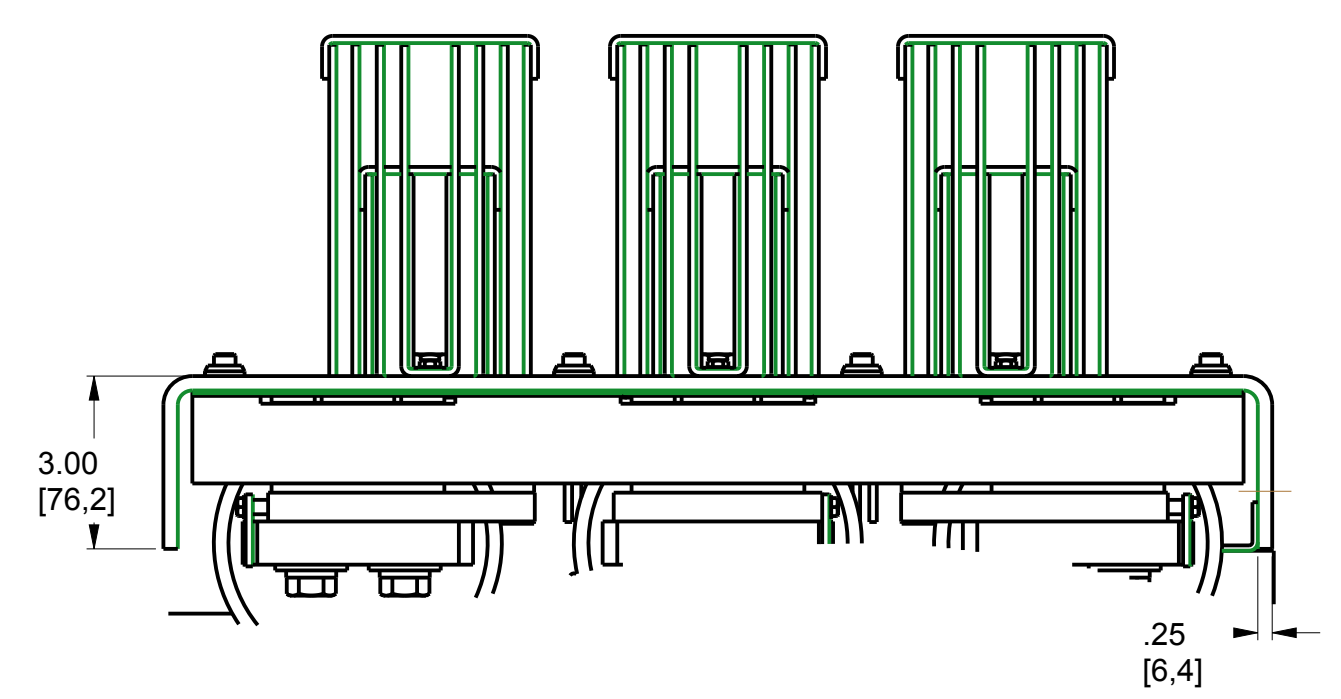
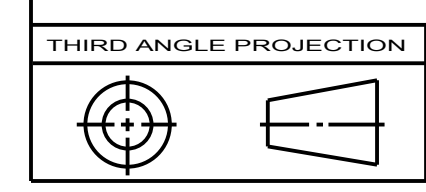


REV.	DESCRIPTION	DATE	APPROVED
1	R1333640	VASANTH	01/31/14
2	R1407486	SACHIN	04/17/14



P8

- NOTE:
- 1/2-13 BOLT TYP. FOR FUSE CONNECTIONS SUPPLIED WITH SWITCH.
 - ALL OUTLINE DIMENSIONS ARE SAME FOR MANUALLY AND ELECTRICALLY OPERATED DEVICES.
 - ALL DIMENSIONS ARE IN INCHES(MILLIMETERS).
 - SEE USER'S GUIDE DEH-41689.
 - CROSS REFERENCE TO ROTARY T-HANDLE THPC SWITCH.
 - MATCHES DEPTH OF ROTARY T-HANDLE THPC SWITCH.
 - REAR MOUNTED COOLING FINS ARE SHIPPED LOOSE AND MUST BE MOUNTED DURING HPC SWITCH INSTALLATION.
 - CUT-OUT BASED ON USE OF TRIM PLATE.



Article or Material Must Conform to REACH Procedure SI900000 Sec. 14
 Article or Material Must Conform to RoHS Procedure SI900000 Sec. 13
 Part must conform to SI 900000 Sect. 4, Toxicity Procedure

APPLIED PRACTICES	SIGNATURES	DATE
DIMENSIONS ARE IN INCHES	MODEL SACHIN	01/31/14
UNLESS OTHERWISE SPECIFIED IN DRAWING	DETAIL VASANTH	01/31/14
TOLERANCE ON:	CHECKED BILL	01/31/14
1 PL DECIMALS ± 0.0	ENGRG	
2 PL DECIMALS ± 0.02	MFG	
3 PL DECIMALS ± 0.005	QUALITY	
ANGLES ± 1.0	ISSUED	
FRACTIONS ± FINISH		
CRITICAL TO QUALITY CHARACTERISTIC	DRAWING FILE: 10112083PB	
	SOLID MODEL: 10112083TG8	

GE Industrial Solutions	
OUTLINE - 2500-3000A HPC PBII BOTTOM FEED THPC23625B, THPC23630B	
SIZE D	DRAWING
SCALE: 1:5	REV 2
DRAWING NO. 10112083	SHEET 1 OF 1