

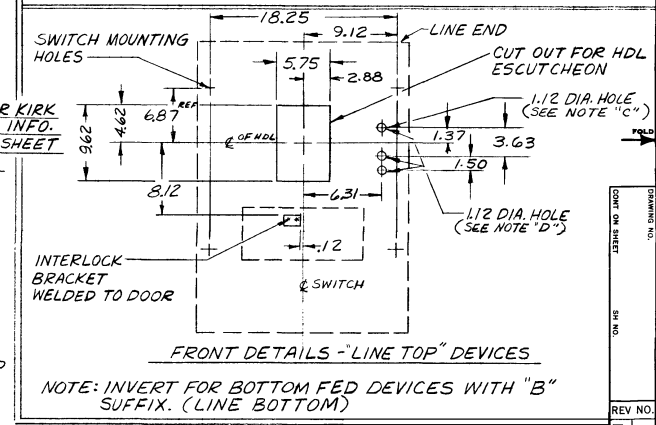
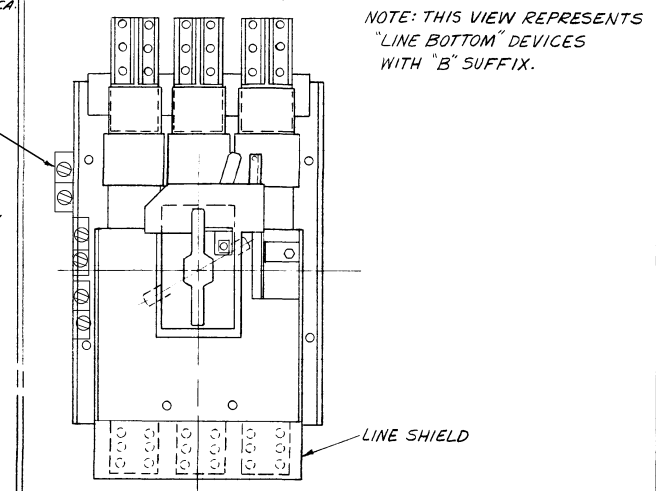
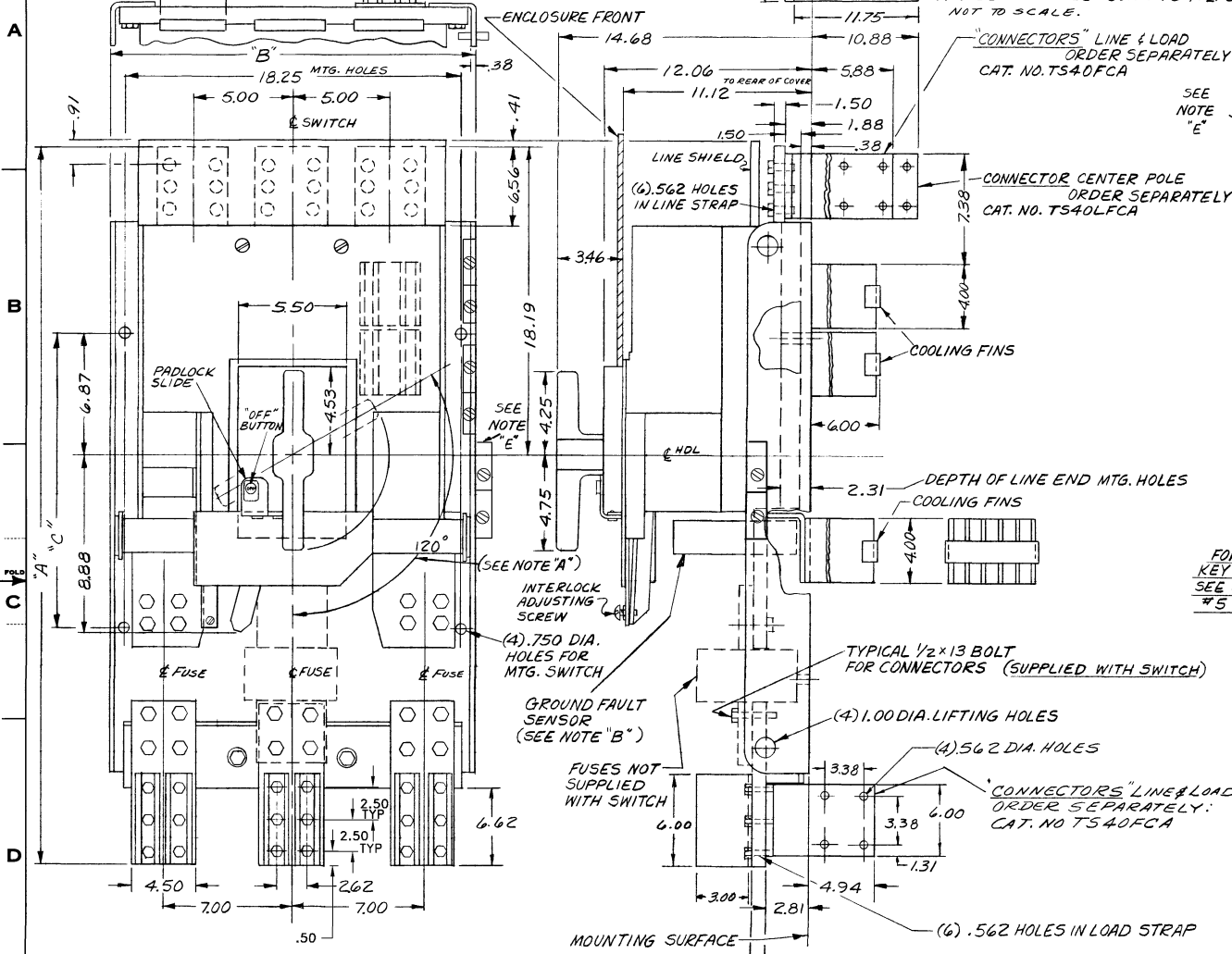
139C4114
ON DRAWING
2 139C4114

GENERAL ELECTRIC

139C4114
CONT ON SHEET 7 SH NO 6

APPLIED PRACTICES	SURFACES	TOLERANCES ON MACHINED DIMENSIONS	
		2 PLACE DEC.	3 PLACE DEC.
FOR ADDITIONAL INFO REFER TO	✓	+	+
		UNLESS SHOWN ON INDIVIDUAL DIMENSIONS	UNLESS SHOWN ON INDIVIDUAL DIMENSIONS
		TOLERANCES IN THIS BLOCK APPLY	

TITLE OUTLINE
4000A. HPC SWITCH
FIRST MADE FOR HIGH PRESSURE CONTACT SWITCH



- NOTE "A" - 120° HANDLE THROW TO CLOSE SWITCH ACTUATE HANDLE 3 TIMES. TO OPEN, BUTTON OR TURN HANDLE COUNTER-CLOCKWISE.
- NOTE "B" - INTEGRAL SENSOR SUPPLIED WITH GROUND FAULT ACCESSORY USING CATALOG NO. SUFFIXES; G31, G3M, G3R, G3T, BG31, BG3M, BG3R, BG3T.
- NOTE "C" - HOLE REQUIRED ONLY FOR GROUND FAULT ACCESSORY WITH CATALOG NO. SUFFIXES ENDING IN "M" (CLEARANCE FOR TARGET).
- NOTE "D" - ALL (3) HOLES REQUIRED FOR GROUND FAULT ACCESSORY WITH CATALOG NO. SUFFIX ENDING IN "T". (CLEARANCE FOR TEST PUSHBUTTON SWITCHES).
- NOTE "E" - MAXIMUM TWO TERMINAL BOARDS CAN BE INSTALLED. FOR SPECIAL REQUEST, THIRD TERMINAL BOARD CAN BE MOUNTED ON OUTSIDE WALL OF BRACKET. (FACTORY INSTALLED ONLY)

NOT TO SCALE

DEVICE	"A"	"B"	"C"
WITHOUT GROUND FAULT SENSOR	40.00	22.38	17.25
WITH GROUND FAULT SENSOR	42.00	25.38	19.25