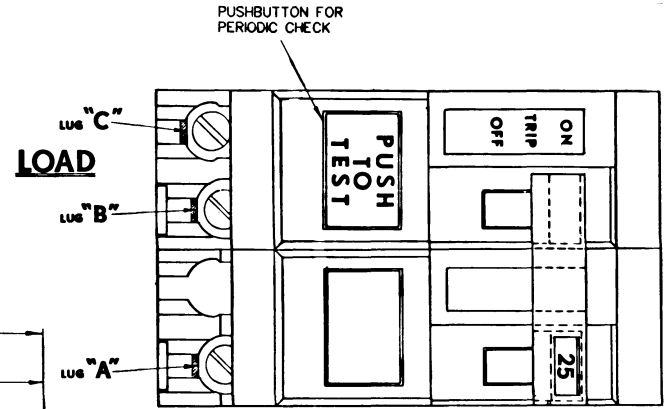


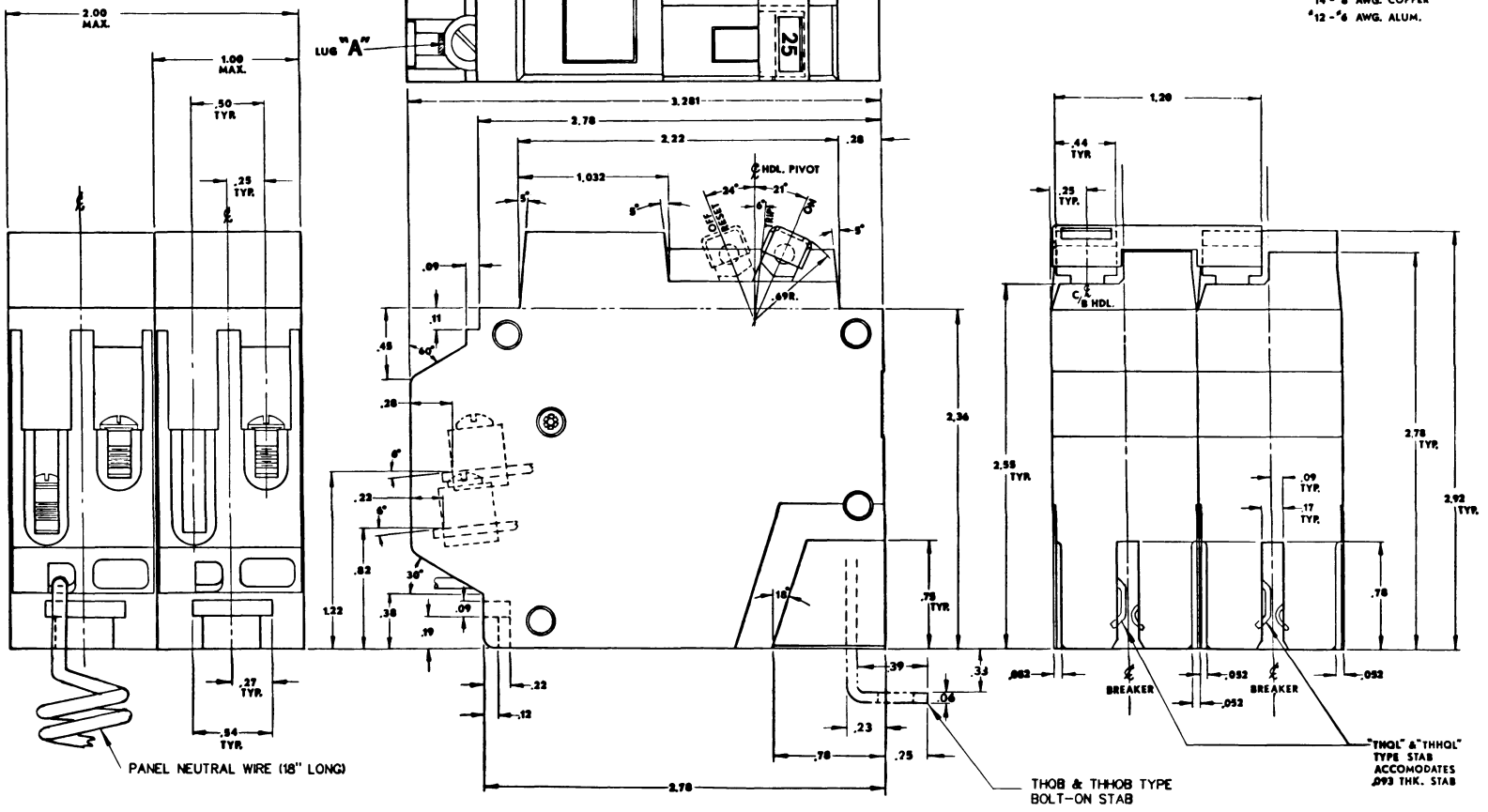
TITLE OUTLINE  
**Q-LINE - 2 POLE**  
 THQL, THQL, THQB, & THQB - GFCI  
 FIRST MADE FOR CB3 MARK Y

A  
B  
C  
D  
E



**LINE**

- LUG "A"**..... LOAD POWER ALUM. LUG  
LUG WIRE RANGE  
#14-#8 AWG. COPPER  
#12-#6 AWG. ALUM.
- LUG "B"**..... LOAD POWER ALUM. LUG  
LUG WIRE RANGE  
#14-#8 AWG. COPPER  
#12-#6 AWG. ALUM.
- LUG "C"**..... LOAD NEUT ALUM. LUG  
LUG WIRE RANGE  
#14-#8 AWG. COPPER  
#12-#6 AWG. ALUM.



WIRE RANGE  
 15 & 20 AMP. #12 AWG. STRANDED COPPER  
 25 & 30 AMP. #10 AWG. STRANDED COPPER

PANEL NEUTRAL WIRE (18" LONG)

REV. NO.  
 DATE  
 BY