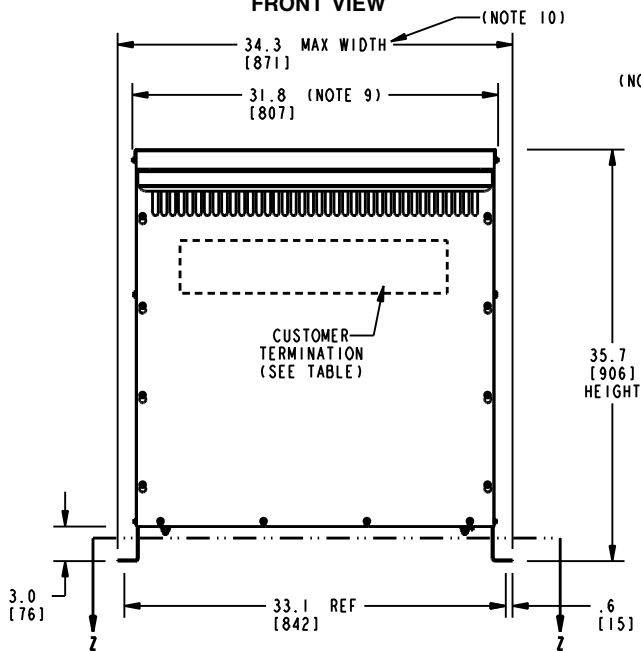
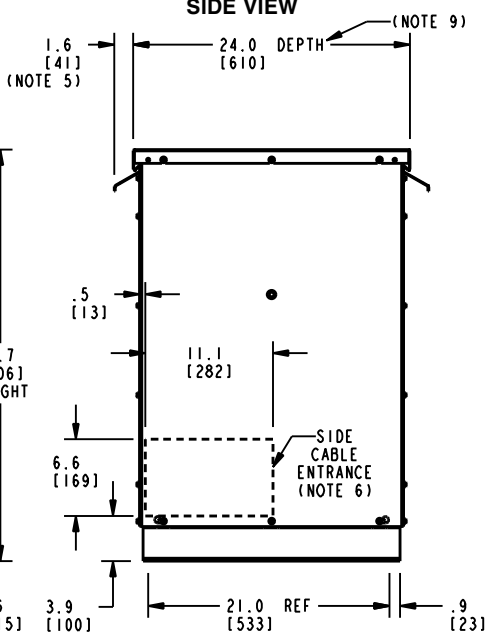


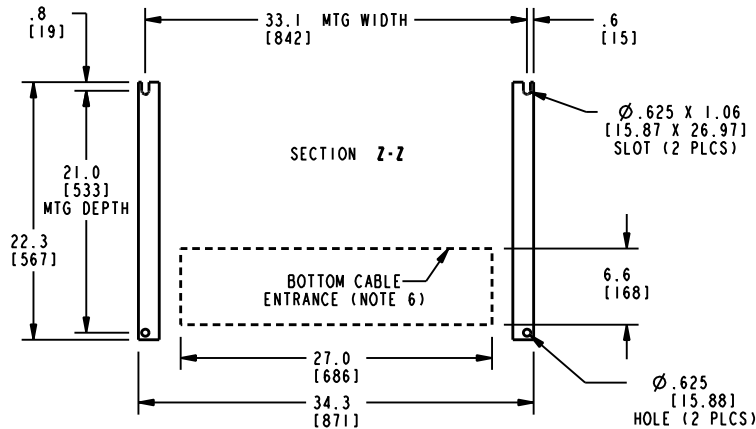
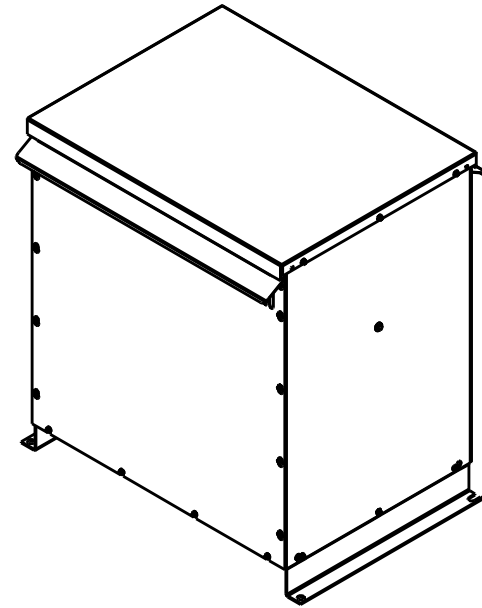
**FRONT VIEW**



**SIDE VIEW**



**ISOMETRIC VIEW**



**BOTTOM VIEW OF MOUNTING AND CABLE ENTRANCE**


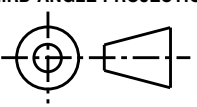
| CUSTOMER TERMINATION |                                      |                |               |
|----------------------|--------------------------------------|----------------|---------------|
| LOCATION             | CONNECTION TYPE                      | HOLE SIZE      | HOLE QTY      |
| PRIMARY BUS BARS     | STANDARD BUS BAR (LUGS ARE OPTIONAL) | .41 [10.3] DIA | 2 PER BUS BAR |
| SECONDARY BUS BARS   |                                      |                |               |

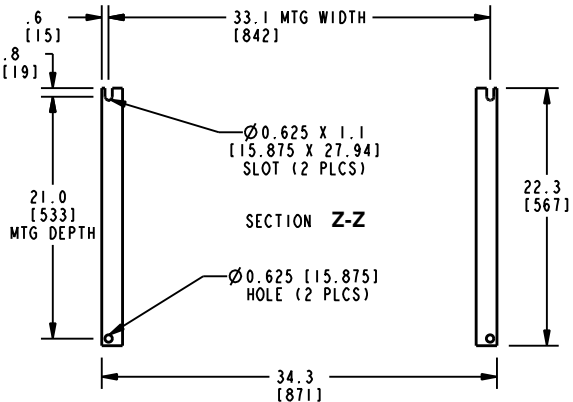
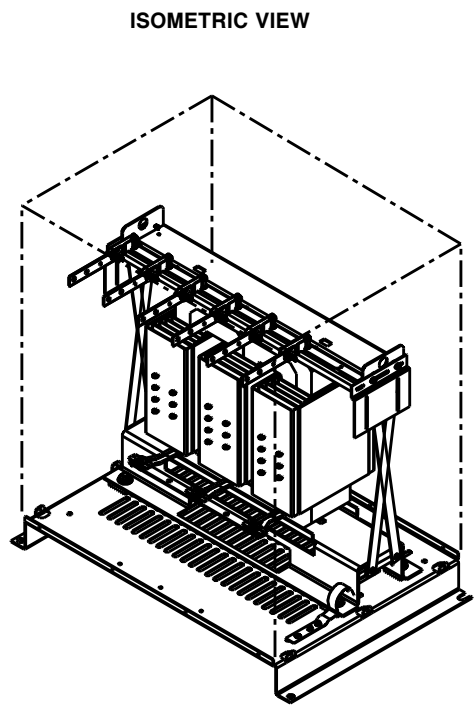
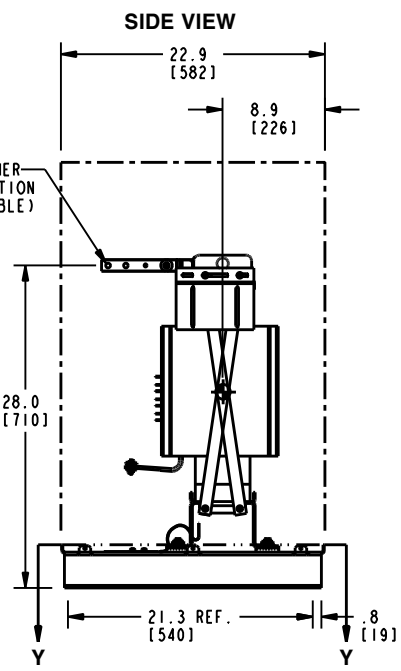
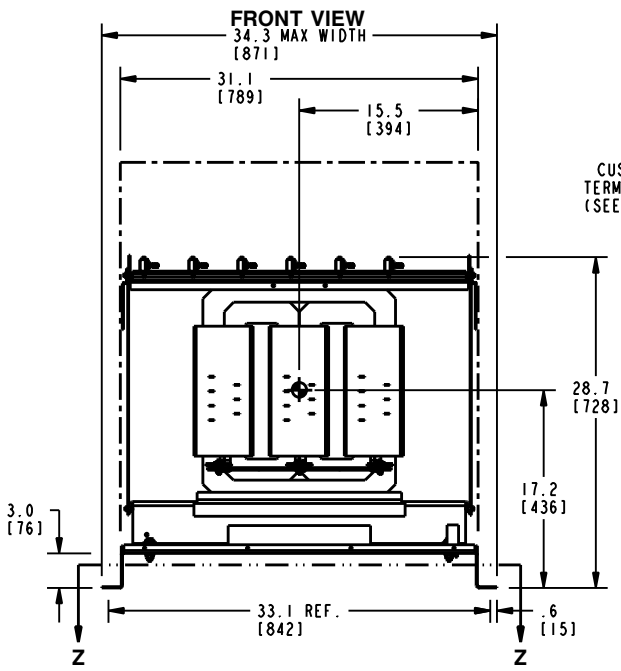
APPROX TOTAL WEIGHT LBS [KG]  
 PAINTED: 503 [228]  
 STAINLESS STEEL: 523 [237]

kVA RATING:  
 K-FACTOR:  
 PRI VOLTAGE:  
 SEC VOLTAGE:  
 FREQ (Hz):  
 TEMP RISE:  
 WINDING MATL:  
 ES SHIELD:  
 SOUND LVL (dB):

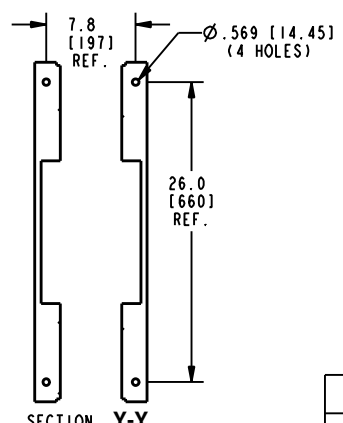
**NOTES:**

- 1) ALL UNITS ARE UL LISTED AND ARE DESIGNED PER NEMA ST-20 STANDARDS.
- 2) THE TEMPERATURE RISE LISTED WAS DETERMINED WHEN THE TRANSFORMER WAS MOUNTED IN A STANDARD NEMA-2 ENCLOSURE.
- 3) TRANSFORMER IS DESIGNED FOR FLOOR MOUNTING. OPTIONAL WALL MOUNTING BRACKETS ARE AVAILABLE.
- 4) TRANSFORMER IS DRY TYPE, CLASS AA, WITH VENTILATED ENCLOSURE FOR INDOOR USE. OPTIONAL RAINSHIELD KITS ARE AVAILABLE TO ADAPT UNIT FOR TYPE 3R OUTDOOR USE WITHOUT VOIDING THE WARRANTY.
- 5) APPLICABLE WHEN OPTIONAL RAINSHIELDS ARE INSTALLED. RAINSHIELDS ARE SHIPPED IN KITS FOR FIELD INSTALLATION.
- 6) CABLE ENTRANCE IS PERMITTED THROUGH THE LEFT SIDE, RIGHT SIDE AND/OR BOTTOM ENCLOSURE PANELS ONLY. CABLE ENTRANCE IS NOT PERMITTED THROUGH THE FRONT, REAR OR TOP PANELS.
- 7) FOR LIFTING OTHER THAN WITH A FORK TRUCK, REMOVE TOP COVER AND USE 1" [25 MM] DIAMETER HOLES IN THE TOP CORE CLAMPS.
- 8) ENCLOSURE PAINT COLOR IS ANSI #61 GRAY. OPTIONAL STAINLESS STEEL ENCLOSURE IS AVAILABLE. FINISH IS 80 GRIT.
- 9) 6" [152 MM] MINIMUM CLEARANCE IS REQUIRED FROM ALL WALLS.
- 10) USE THIS DIMENSION WHEN PLANNING THE MOUNTING PAD.

|                                   |   |   |          |
|-----------------------------------|---|---|----------|
| JOB NAME:<br>SPEEDI PROP:         | UNLESS OTHERWISE SPECIFIED ALL DIMENSIONS ARE INCH [MM]   |  <b>GE Industrial Solutions</b>                          |          |
|                                   | THIRD ANGLE PROJECTION<br> | <b>DRY TYPE TRANSFORMER OUTLINE DRAWING<br/>                 TYPE QL, 3-PHASE, DOE 2016 EFFICIENCY<br/>                 (ENCLOSED UNIT)</b> |          |
| www.geindustrial.com/transformers | CATALOG #   | REV   | <b>1</b> |
| CAD DRAWING: 303B111GEUYP04C      | SHEET 1 OF 2  |   |          |



**BOTTOM VIEW OF MOUNTING HOLE PATTERN**



**BOTTOM VIEW OF MOUNTING HOLE PATTERN WITHOUT BASE ATTACHED**

| CUSTOMER TERMINATION |                                      |                |               |
|----------------------|--------------------------------------|----------------|---------------|
| LOCATION             | CONNECTION TYPE                      | HOLE SIZE      | HOLE QTY      |
| PRIMARY BUS BARS     | STANDARD BUS BAR (LUGS ARE OPTIONAL) | .41 [10.3] DIA | 2 PER BUS BAR |
| SECONDARY BUS BARS   |                                      |                |               |

APPROX TOTAL WEIGHT LBS [KG]  
 PAINTED: 428 [194]

kVA RATING:  
 K-FACTOR:  
 PRI VOLTAGE:  
 SEC VOLTAGE:  
 FREQ (Hz):  
 TEMP RISE:  
 WINDING MATL:  
 ES SHIELD:  
 SOUND LVL (dB):

- NOTES:
- 1) ALL UNITS ARE UL LISTED AND ARE DESIGNED PER NEMA ST-20 STANDARDS.
  - 2) THE TEMPERATURE RISE LISTED WAS DETERMINED WHEN THE TRANSFORMER WAS MOUNTED IN A STANDARD NEMA-2 ENCLOSURE.
  - 3) TRANSFORMER IS DRY TYPE, CLASS AA FOR INDOOR USE.
  - 4) FOR LIFTING OTHER THAN WITH A FORK TRUCK, USE 1" [25 MM] DIAMETER HOLES IN THE TOP CORE CLAMPS.
  - 5) BASE PAINT COLOR IS ANSI #61 GRAY.
  - 6) 6" [152 MM] MINIMUM CLEARANCE IS REQUIRED FROM ALL WALLS.
  - 7) INDICATES APPROXIMATE CENTER OF GRAVITY.

|                                   |   |  |          |
|-----------------------------------|---|--|----------|
| JOB NAME:<br>SPEEDI PROP:         | UNLESS OTHERWISE SPECIFIED ALL DIMENSIONS ARE INCH [MM] | <b>GE Industrial Solutions</b>   |          |
|                                   | THIRD ANGLE PROJECTION<br>                              | <b>DRY TYPE TRANSFORMER OUTLINE DRAWING</b><br><b>TYPE QL, 3-PHASE, DOE 2016 EFFICIENCY</b><br><b>(CORE &amp; COIL UNIT)</b> |          |
| www.geindustrial.com/transformers | CATALOG #   | REV  | <b>1</b> |
| CAD DRAWING: 303B111GEUYP04C      | SHEET 2 OF 2  |  |          |