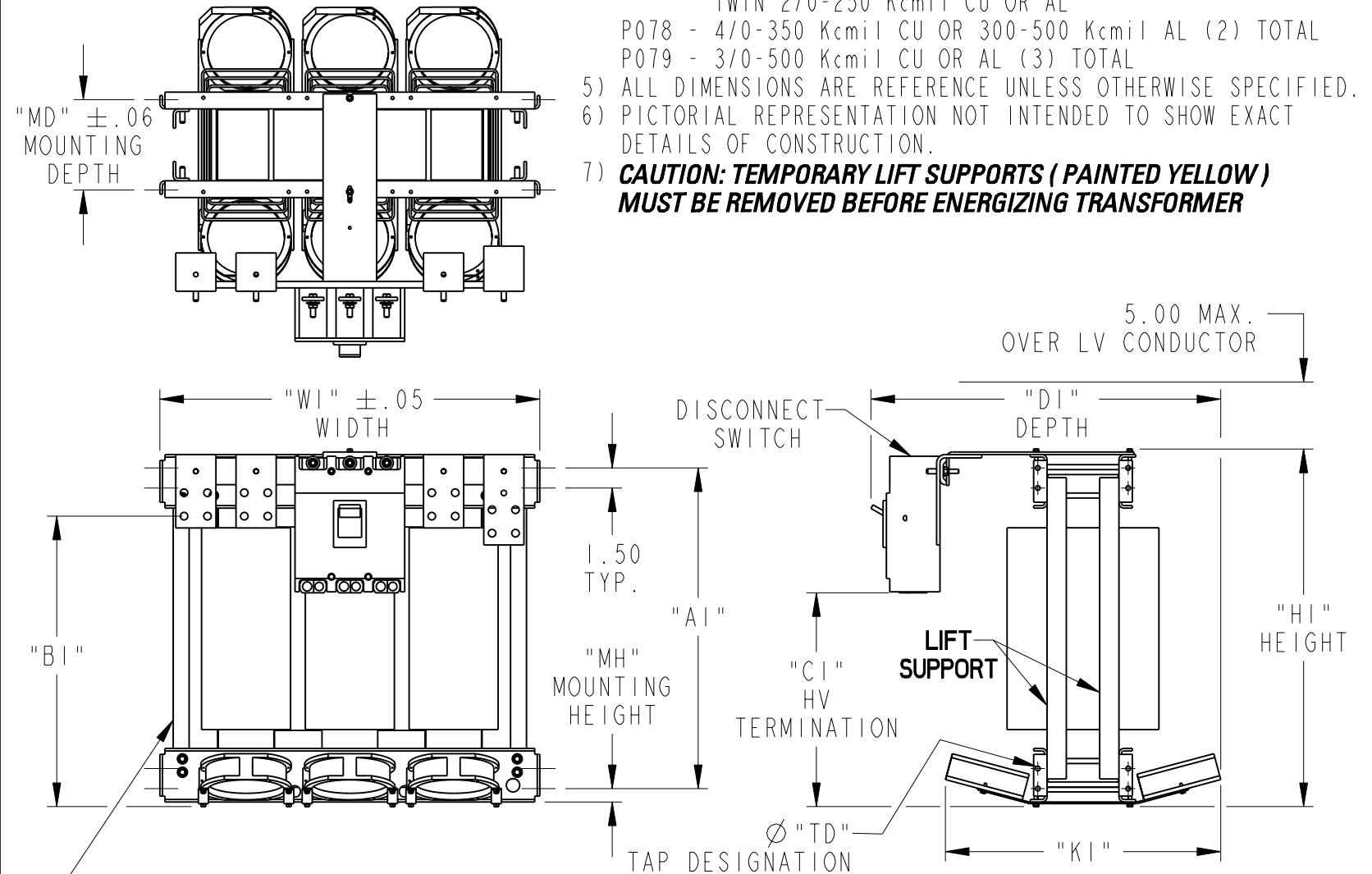
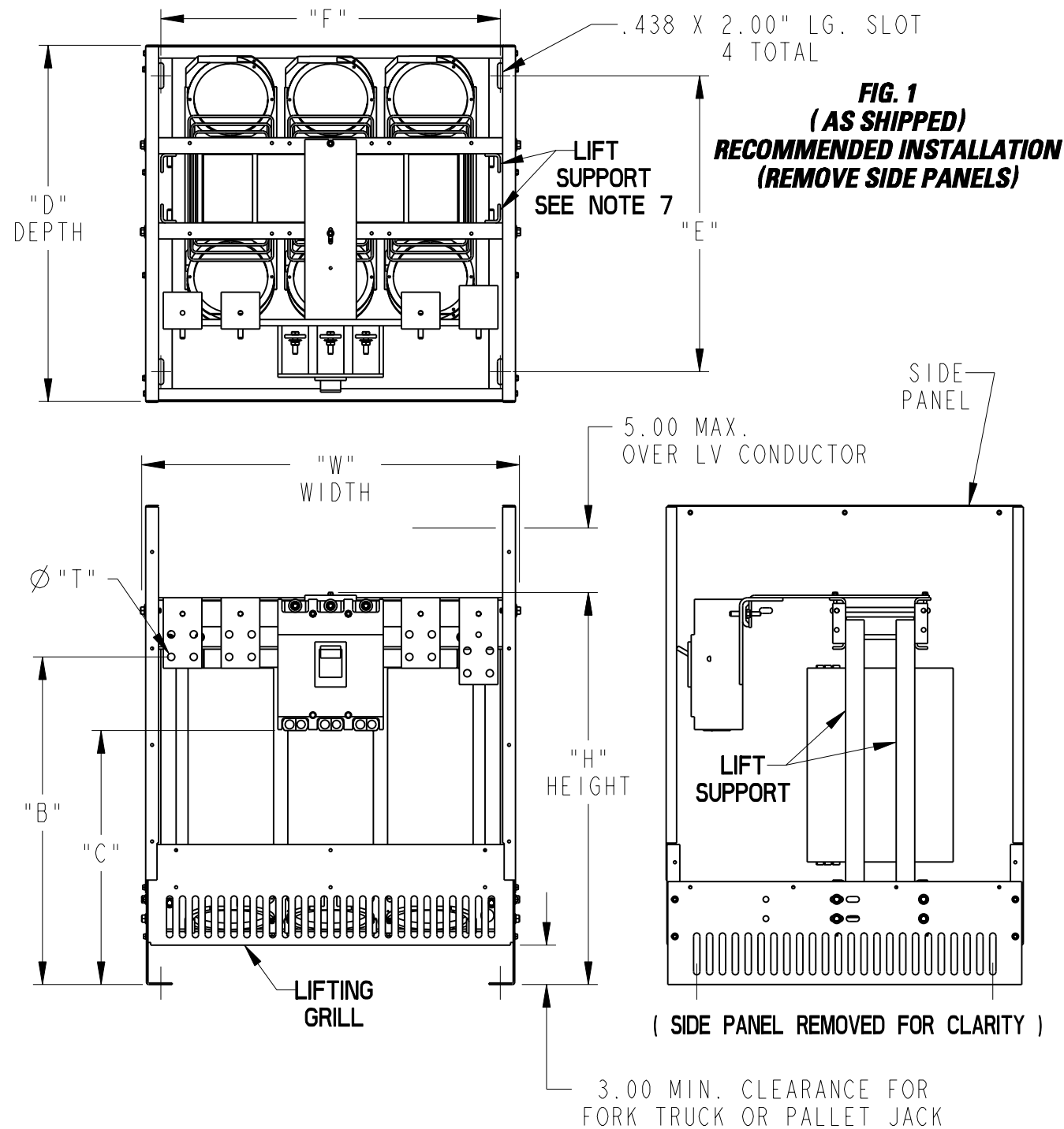


PART NO.	REF. kVA	APPROX. WEIGHT (LBS.) FIG. 2		DIMENSIONS AS SHIPPED - SEE NOTE 1								MAXIMUM ENVELOPE			MOUNTING - OPTIONAL			"A1"	"B1"	"C1"	"K1"
		AL	CU	"B"	"C"	"D"	"E"	"F"	"H"	"T"	"W"	"D1"	"H1"	"W1"	"MD"	"MH"	"TD"				
P077	225	720	851	25.50	19.75	27.75	23.00	26.37	30.50	.563	29.50	26.37	27.00	28.37	6.75	1.00	.375-16	23.94	21.68	16.00	20.75
P078	300	880	1020	29.37	23.62	24.75	20.00	31.62	34.25	.563	34.75	23.50	30.62	33.62	5.62	1.00	.375-16	27.57	25.56	19.87	18.50
P079	500	1395	1590	31.00	20.68	32.25	27.00	35.25	37.25	.563	38.50	29.62	33.62	37.25	6.75	1.00	.375-16	30.57	27.12	16.87	20.75

NOTES:

- 1) TO MOVE UNIT WITH A PALLET JACK OR FORK TRUCK:
A) INSERT FORKS COMPLETELY UNDERNEATH BOTH FRONT AND BACK LIFTING GRILLS.
FOR CRANE LIFTING: USE THE 1.00" DIA. HOLES IN THE TOP CLAMPS.
- 2) "REF kVA" IS FOR UNITS RATED AT 150°C RISE AND 60 Hz.
- 3) DIMENSIONS ARE IN INCHES.
- 4) DISCONNECT SWITCH LUG SIZE PER FOLLOWING PART NUMBER:
P077 - 2/0-600 (1) TOTAL, 6-250 (1) TOTAL OR TWIN 2/0-250 Kcmil CU OR AL
P078 - 4/0-350 Kcmil CU OR 300-500 Kcmil AL (2) TOTAL
P079 - 3/0-500 Kcmil CU OR AL (3) TOTAL
- 5) ALL DIMENSIONS ARE REFERENCE UNLESS OTHERWISE SPECIFIED.
- 6) PICTORIAL REPRESENTATION NOT INTENDED TO SHOW EXACT DETAILS OF CONSTRUCTION.
- 7) **CAUTION: TEMPORARY LIFT SUPPORTS (PAINTED YELLOW) MUST BE REMOVED BEFORE ENERGIZING TRANSFORMER**



CAUTION: LIFT SUPPORTS MUST REMAIN ATTACHED WHEN UNIT IS LIFTED FROM THE TOP CLAMPS BY A CRANE. WHEN UNIT IS SET DOWN IN FINAL MOUNTING POSITION THE LIFT SUPPORTS MUST BE REMOVED BEFORE ENERGIZING THE TRANSFORMER

FIG. 2 (TOTALLY OPEN) OPTIONAL INSTALLATION

GE Consumer & Industrial

TransforMore
DRY TYPE, OPEN, TRANSFORMERS
UL RECOGNIZED - THREE PHASE

DATE 10-15-04	REV LEVEL 002	DIST	DRAWING NUMBER 303B899CC	SHEET
------------------	------------------	------	-----------------------------	-------