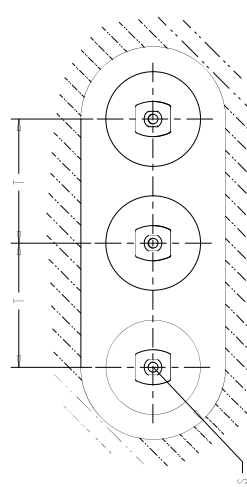


**NOTES:**

1. INCREASE CLEARANCES "S" & "T" 3% PER EACH 1,000 FT OVER 6,000 FT.
2. ARRESTER ASSEMBLY CONSISTS OF ARRESTER UNIT, LINE & GROUND TERMINALS, INSULATING BRACKET (IF APPLICABLE).
3. OTHER APPARATUS STANDARDS, OTHER SPECIFICATIONS OR LOCAL CODES MAY REQUIRE GREATER MINIMUM SPACING DIMENSIONS FOR ARRESTERS.

**HORIZONTAL LIMIT FOR GROUNDED OBJECTS**

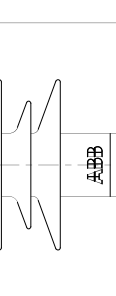
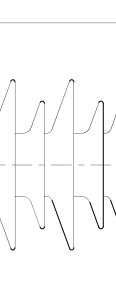
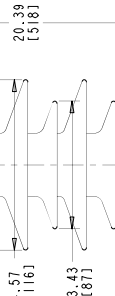
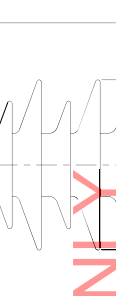
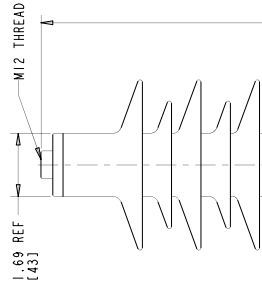


**HORIZONTAL  $\phi$  INSTALLATION LAYOUT**

STYLE NO.	DUTY CYCLE KV	MCOV KVrms	CREEPAGE		LBS	KG	PH TO GRD.		PH TO PH		FIGURE
			IN	MM			IN	MM	IN	MM	
D003SA002ADXY0(*)	3	2.55	6.02	153	2.2	1	3.54	90	4.72	120	1
D005SA004ADXY0(*)	5	4.25	6.02	153	2.2	1	3.54	90	4.72	120	1
D006SA005ADXY0(*)	6	5.10	6.02	153	2.2	1	3.54	90	4.72	120	1
D009SA007ADXY0(*)	9	7.65	12.04	306	3.08	1.4	6.18	157	6.89	175	2
D010SA008ADXY0(*)	10	8.40	12.04	306	3.08	1.4	6.18	157	6.89	175	2
D012SA010ADXY0(*)	12	10.2	12.04	306	3.08	1.4	6.18	157	6.89	175	2
D015SA012ADXY0(*)	15	12.7	18.11	460	3.96	1.8	8.86	225	9.45	240	3
D018SA015ADXY0(*)	18	15.3	18.11	460	3.96	1.8	8.86	225	9.45	240	3
D021SA017ADXY0(*)	21	17.0	18.11	460	3.96	1.8	8.86	225	9.45	240	3
D024SA019ADXY0(*)	24	19.0	24.00	610	5.28	2.4	11.54	293	12.05	306	4
D027SA022ADXY0(*)	27	22.0	24.00	610	5.28	2.4	11.54	293	12.05	306	4
D030SA024ADXY0(*)	30	24.4	24.00	610	5.28	2.4	11.54	293	12.05	306	4
D033SA027ADXY0(*)	33	27.0	51.60	1311	9.5	4.3	16.85	428	17.20	437	5
D036SA029ADXY0(*)	36	29.0	51.60	1311	9.5	4.3	16.85	428	17.20	437	5
D045SA036ADXY0(*)	45	36.5	51.60	1311	9.5	4.3	16.85	428	17.20	437	5

(\*) X, Y FIELDS (TOP AND BOTTOM HARDWARE OPTIONS) SEE PAGE 2 OF THIS DRAWING

FOR TENDER PURPOSES ONLY



**FIGURE 1**

**FIGURE 2**

**FIGURE 3**

**FIGURE 4**

**FIGURE 5**

REV.	DATE	DESCRIPTION
01	NOV. 17, 2004	ADDED DIMENSIONS TO PAGE 2
02	DEC. 28, 2004	ADDED NOTE AND BRACKET TO CALL OUT LOCATION AND SIZE
03	MAY 2, 2005	ADDED OPTION "S" AND "T" VALUES FOR STYLE D036SA029ADXY0(*)
04	NOV. 10, 2008	FIGURES 1-5 RELOCATED TO LAYOUT AND TO TITLE BLOCK
05	AUGUST 5, 2009	UPDATED TABLE "S" AND "T" VALUES FOR STYLE D024SA019ADXY0(*)
06	AUGUST 6, 2009	ADDED OPTION "A" PART DESCRIPTION
07	JULY 20, 2010	SH 2: DISCONNECTOR UPDATED "O" OPTION
08	DECEMBER 17, 2010	SH 2: ADDED OPTION "O" ADDED NOTE "O"
09	JULY 20, 2011	SH 2: ADDED OPTION "O" ADDED
10	AUGUST 31, 2011	SH 2: DISCONNECTOR UPDATED "O" OPTION

ALL DIMENSIONS IN INCHES (MM) UNLESS NOTED

STANDARD POLIM-D ARRESTER  
3-45 KV OUTLINE

ABB INC.  
Power Products Division  
500 Distribution Circle, W. Pittsburg, PA 15066

SCALE: 1/8" = 1" UNLESS NOTED

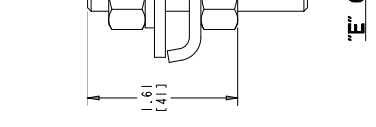
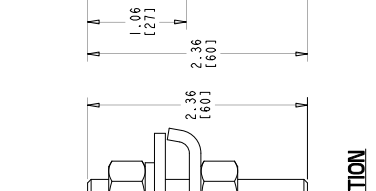
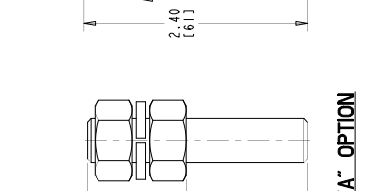
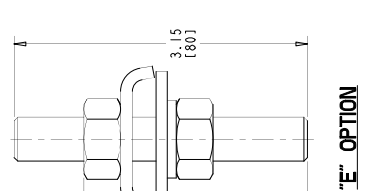
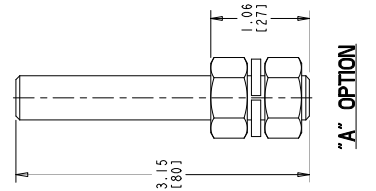
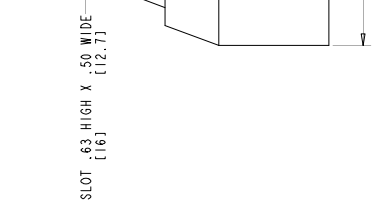
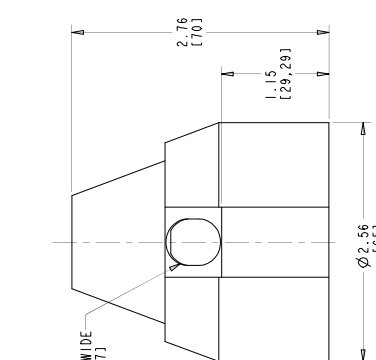
REV. 1 OF 2

4F1001

10

ppc-s-03-d

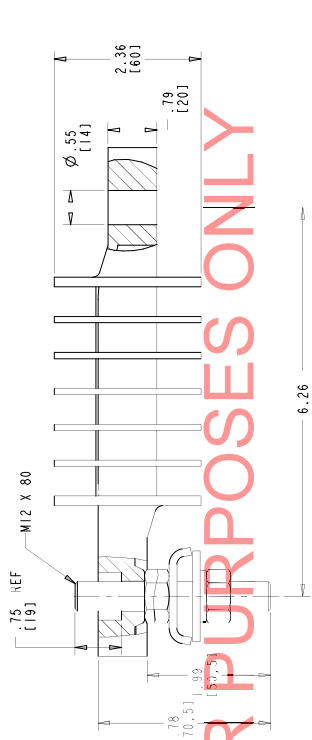
- A - M12 STUD WITH 2 NUTS AND A LOCKWASHER.
  - E - CABLE TERMINAL WITH M12 STUD, 2 NUTS LOCKWASHER, FLAT WASHER AND TERMINAL CLAMP.
  - O - M12 STUD WITH 2 NUTS, LOCKWASHER AND INSULATING BRACKET.
  - P - CABLE TERMINAL WITH INSULATING BRACKET, M12 STUD, 2 NUTS, LOCKWASHER, FLAT WASHER AND TERMINAL CLAMP.
  - Q - CABLE TERMINAL WITH INSULATING BRACKET & DISCONNECTOR WITH M12 STUD, FLAT WASHER, M10 LOCKWASHER, HEX NUT AND TERMINAL CLAMP.
- NAMEPLATE  
O - STANDARD ANSI ONLY



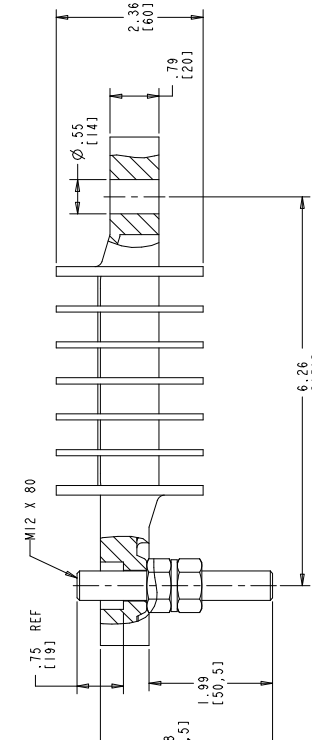
**BIRDCAPHOI**

**BOTTOM HARDWARE (Y FIELD)**

**TOP HARDWARE (X FIELD)**



**BOTTOM HARDWARE (Y FIELD) "P" OPTION**



**BOTTOM HARDWARE (Y FIELD) "Q" OPTION**

FOR TENDER PURPOSES ONLY

REV.	DESCRIPTION & DATE
01	NOV. 17, 2004
02	DEC. 28, 2004
03	MAY 2, 2005
04	NOV. 10, 2006
05	AUGUST 5, 2009
06	AUGUST 6, 2009
07	JULY 20, 2010
08	DECEMBER 17, 2010
09	JULY 20, 2011
10	AUGUST 31, 2011

ALL DIMENSIONS IN INCHES (MM) UNLESS NOTED	
THIS DRAWING IS UNCONTROLLED WHEN USED FOR FABRICATION. THE USER SHALL BE RESPONSIBLE FOR OBTAINING THE LATEST REVISIONS. THE USER SHALL BE RESPONSIBLE FOR OBTAINING THE LATEST REVISIONS.	
STANDARD POLIM-D ARRESTER 3-45 KV OUTLINE	
ABB INC. Power Product Division 500 Distribution Circle, Ft. Pittsburg, PA 15066	
SCALE	AS SHOWN
DATE	08/11/2010
DESIGNER	PHILIPPORE
CHECKED BY	PHILIPPORE
APP'D BY	PHILIPPORE
SHEET NO.	4F1001
TOTAL SHEETS	10