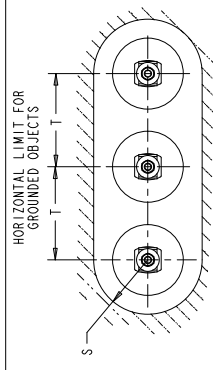


STYLE NO.	DUTY CYCLE kV	MCOV kVrms	CREEPAGE		LBS	KG	PH TO GRD.		PH TO PH		FIGURE
			IN	MM			IN	MM	IN	MM	
D015S8012ADE00	15	12.70	28.2	715	5.5	2.5	11.5	293	12.0	306	1
D015S8012ADE00	15	12.70	28.2	715	5.5	2.5	11.5	293	12.0	306	2
D015S8012ADE00	15	12.70	28.2	715	5.5	2.5	11.5	293	12.0	306	3
D018S8015ADE00	18	15.30	28.2	715	5.5	2.5	11.5	293	12.0	306	1
D018S8015ADE00	18	15.30	28.2	715	5.5	2.5	11.5	293	12.0	306	2
D018S8015ADE00	18	15.30	28.2	715	5.5	2.5	11.5	293	12.0	306	3



- E - CABLE TERMINAL WITH M12 STUD, 2 NUTS LOCKWASHER, FLAT WASHER AND TERMINAL CLAMP.
- P - CABLE TERMINAL WITH INSULATING BRACKET, M12 STUD, 2 NUTS, LOCKWASHER, FLAT WASHER AND TERMINAL CLAMP.
- 0 - CABLE TERMINAL WITH INSULATING BRACKET & DISCONNECTOR WITH M12 STUD, 2 NUTS, LOCKWASHER, FLAT WASHER AND TERMINAL CLAMP.
- NAMEPLATE
- 0 - STANDARD ANSI ONLY

HORIZONTAL INSTALLATION LAYOUT

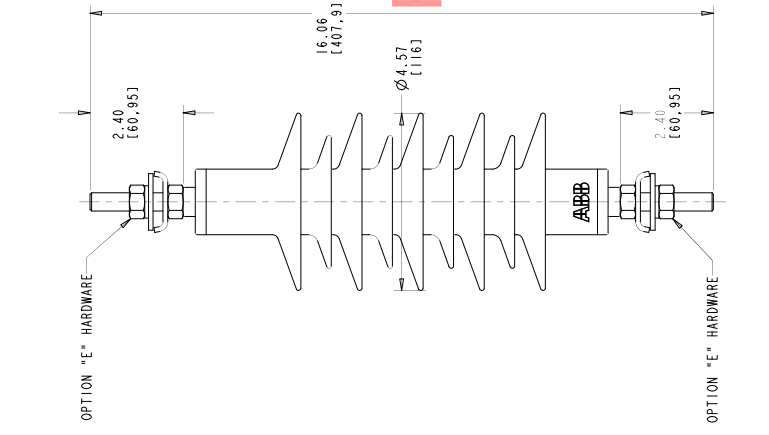


FIGURE 1

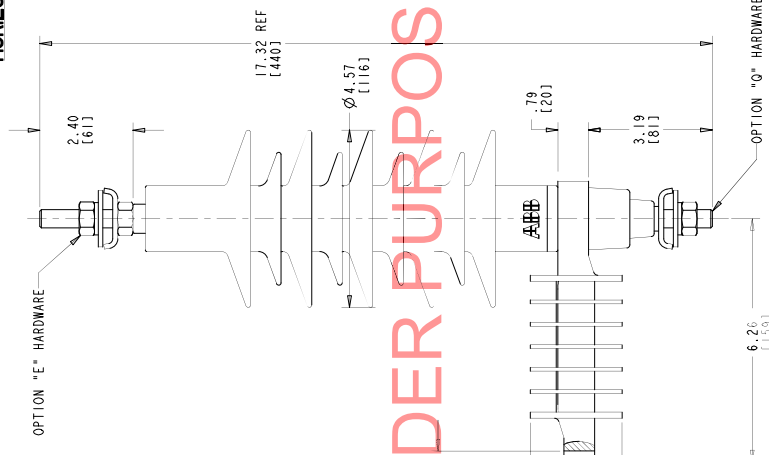


FIGURE 2

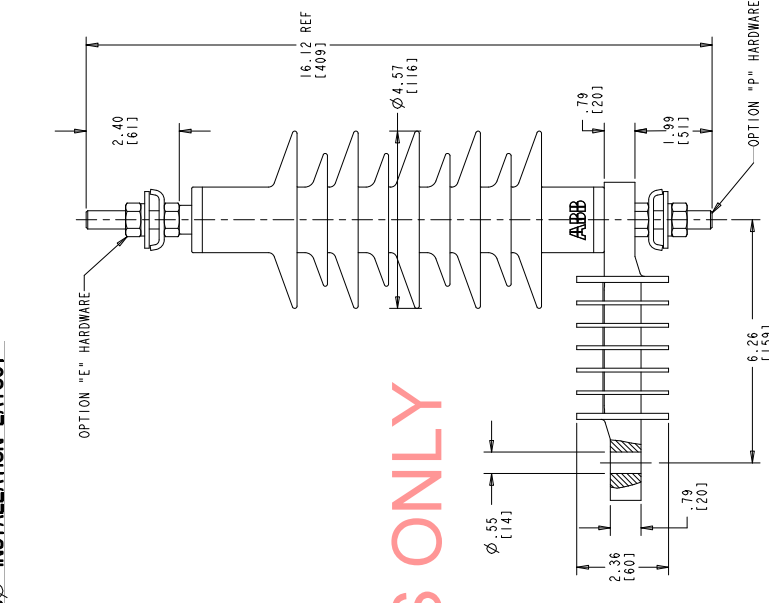


FIGURE 3

FOR TENDER PURPOSES ONLY

ALL DIMENSIONS IN INCH UNLESS NOTED

ABB INC.
 Building 2018 Avenue B, Yonkers, NY 10587

EXTRA CREEP SURGE ARRESTER
 15-18KV OUTLINE

ABB INC.
 Building 2018 Avenue B, Yonkers, NY 10587

SCALE: 1:1

DATE: 04/10/23

REV: 1

4F1023

1