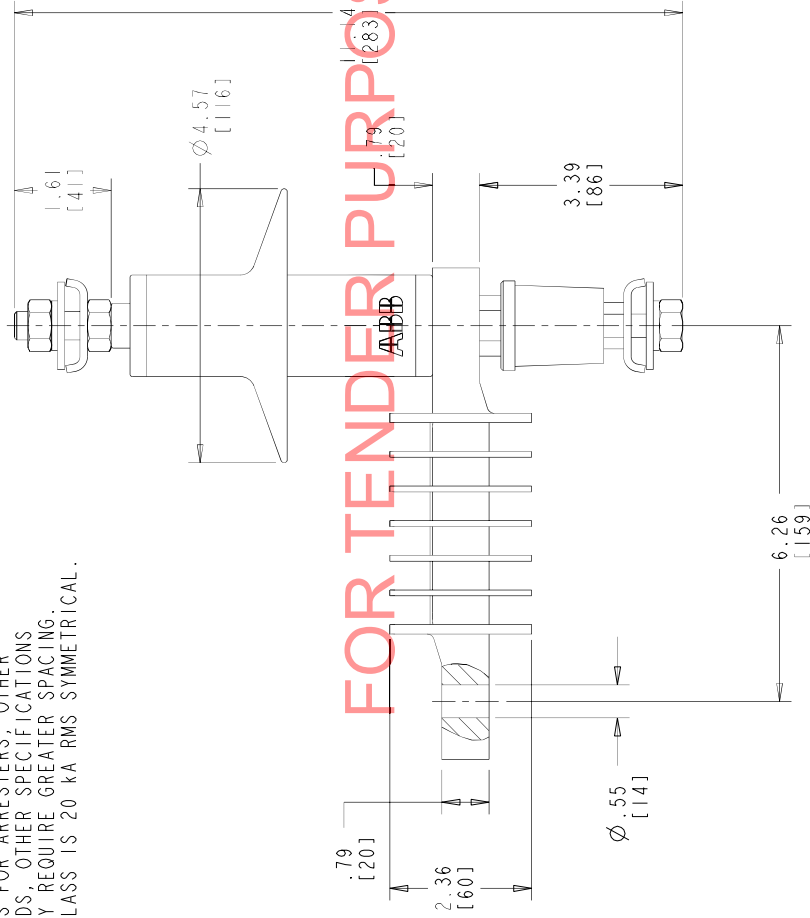


EE01033
DRW

STYLE NO.	DUTY CYCLE kv	MCOV kvrms	CREEPAGE		LBS	KG	PH TO GRD.		PH TO PH	
			IN	MM			IN	MM	IN	MM
U003SA002B1E00	3	2.55	6.02	153	2.2	1.0	3.54	90	4.72	143
U004SA003B1E00	4	3.40	6.02	153	2.2	1.0	3.54	90	4.72	143
U006SA005B1E00	6	5.10	6.02	153	2.2	1.0	3.54	90	4.72	143

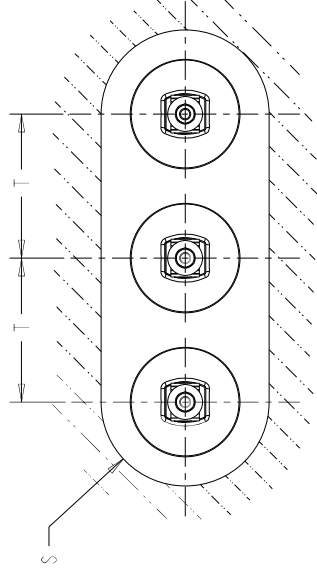
NOTES:

1. INCREASE CLEARANCES "S" & "T" 3% PER 1,000 FT. [304.8 m] OVER 6,000 FT. [1828.8 m]
2. ARRESTER ASSEMBLY CONSISTS OF ARRESTER UNIT, LINE & GROUND TERMINALS.
3. MINIMUM DIMENSIONS FOR ARRESTERS, OTHER APPARATUS STANDARDS, OTHER SPECIFICATIONS OR LOCAL CODES MAY REQUIRE GREATER SPACING.
4. PRESSURE RELIEF CLASS IS 20 KA RMS SYMMETRICAL.



FOR TENDER PURPOSES ONLY

HORIZONTAL LIMIT FOR GROUNDED OBJECTS



HORIZONTAL 3Ø INSTALLATION LAYOUT

ALL DIMENSIONS IN INCHES [MM] UNLESS NOTED

This drawing is the property of ABB INC. and contains proprietary and confidential information which must not be duplicated, used or disclosed other than expressly authorized by ABB INC.

XPI-III ARRESTER (E00)
3-6 KV OUTLINE

ABB

ABB INC.
Power Products Division
100 Distribution Circle, Mt. Pleasant, PA 15666

CAD DRW PRDZC W/ID/FIRE 2.0

SCALE 0:33

ASSY. DWG.

OWN

CRJ/GOWSKI

CHK

APP

SHEET 1 OF 1

4F1033

2

PRO.e-bdr-c

REV. DESCRIPTION & DATE

01 JANUARY 7, 2011

TITLE: 3-6 KV WAS 3 KV

STYLE CHART: STYLES

U003SA002B1E00 AND

U004SA003B1E00 ADDED

STYLE U006SA005B1E00

UPDATED S AND T VALUES

DJK

02 APRIL 17, 2014