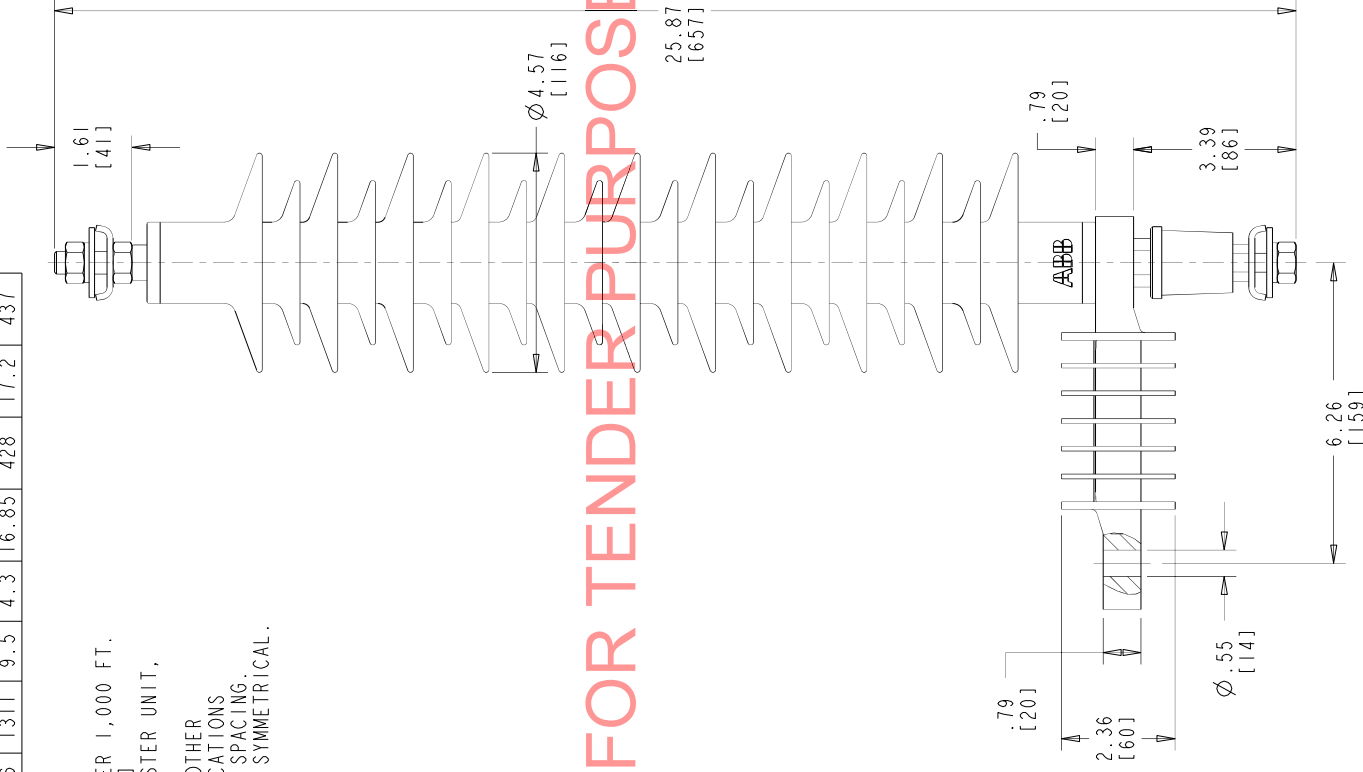


5E01-F7
DRW

STYLE NO.	DUTY CYCLE kv	MCOV kvrms	CREEPAGE		LBS	KG	PH TO GRD.		PH TO PH	
			IN	MM			IN	MM	IN	MM
U036SA029B1E00	36	31.5	51.6	1311	9.5	4.3	16.85	428	17.2	437
U045SA036B1E00	45	36.5	51.6	1311	9.5	4.3	16.85	428	17.2	437

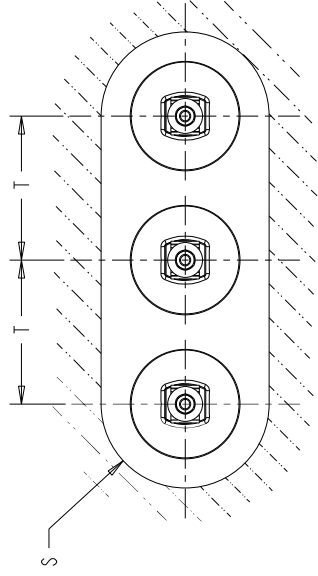
NOTES:

1. INCREASE CLEARANCES "S" & "T" 3% PER 1,000 FT. [304.8 m] OVER 6,000 FT. [1828.8 m]
2. ARRESTER ASSEMBLY CONSISTS OF ARRESTER UNIT, LINE & GROUND TERMINALS.
3. MINIMUM DIMENSIONS FOR ARRESTERS, OTHER APPARATUS STANDARDS, OTHER SPECIFICATIONS OR LOCAL CODES MAY REQUIRE GREATER SPACING.
4. PRESSURE RELIEF CLASS IS 20 kA RMS SYMMETRICAL.



FOR TENDER PURPOSES ONLY

HORIZONTAL LIMIT FOR GROUND OBJECTS



HORIZONTAL 3Ø INSTALLATION LAYOUT

ALL DIMENSIONS IN INCHES [MM] UNLESS NOTED

This drawing is the property of ABB INC. and contains proprietary and confidential information which must not be duplicated, used or disclosed other than expressly authorized by ABB INC.

XPI-III ARRESTER (E00)
45 kV OUTLINE

ABB INC.
Power Products Division
100 Distribution Circle, Mt. Pleasant, PA 15666

SCALE 0:33

ASSY. DWG.

DRW. DJK

CHK. KRYGOWSKI

APP. DJK

CAD DRW PRD/C W/ID/FIRE 2.0

SHEET 1 OF 1

4F1035

REV. 2

01	MARCH 5, 2012	STYLE U036SA029B1E00	DJK	02	SEPTEMBER 16, 2016
REV. DESCRIPTION & DATE					