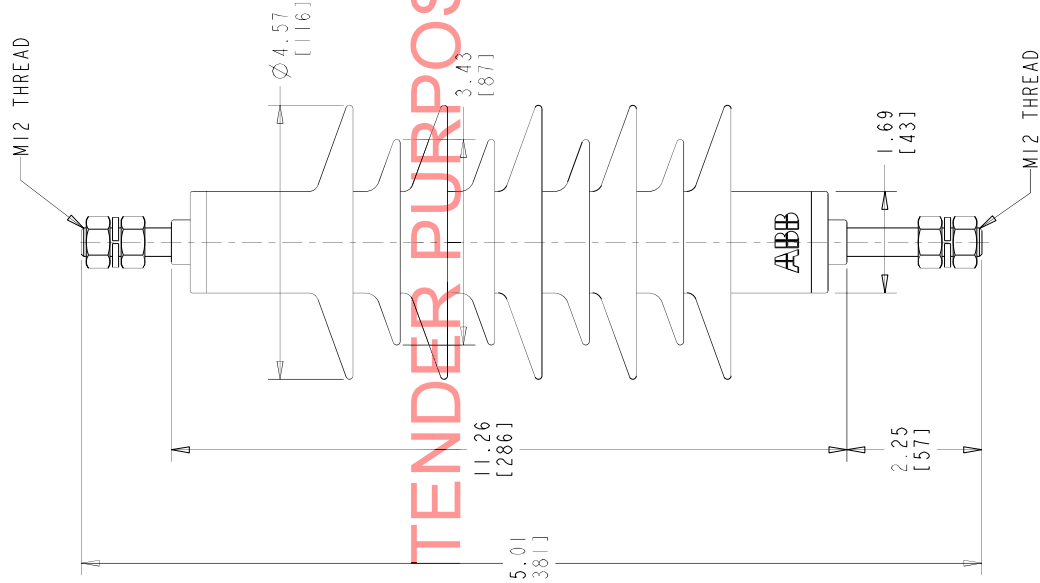


STYLE NO.	DUTY CYCLE kV	MCOV kVrms	CREEPAGE		LBS	kg	MINIMUM CLEARANCE FROM CENTERLINE	
			IN	MM			PHASE TO GROUND	PHASE TO PHASE
U015SB012B1AA0	15	12.70	28.15	715	5.51	2.5	11.53	12.05
							293	306

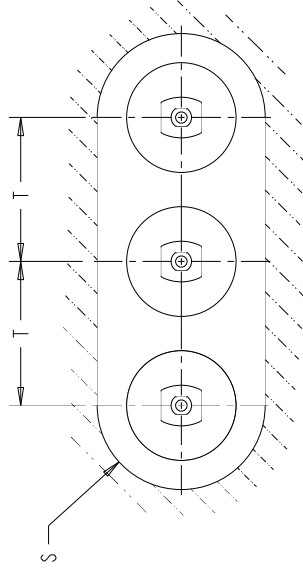
NOTES:

1. INCREASE CLEARANCES "S" & "T" 3% PER 1,000 FT. [304.8 m] OVER 6,000 FT. [1828.8 m]
2. ARRESTER ASSEMBLY CONSISTS OF ARRESTER UNIT, LINE & GROUND TERMINALS.
3. MINIMUM DIMENSIONS FOR ARRESTERS, OTHER APPARATUS STANDARDS, OTHER SPECIFICATIONS OR LOCAL CODES MAY REQUIRE GREATER SPACING.
4. PRESSURE RELIEF CLASS IS 20 KA RMS SYMMETRICAL.
5. LINE & GROUND TERMINALS CAN ACCOMMODATE CU OR AL CABLE SIZE NO. 2 TO 600 MCM (.250" TO .937") DIA.



FOR TENDER PURPOSES ONLY

HORIZONTAL LIMIT FOR GROUNDED OBJECTS



HORIZONTAL 3Ø INSTALLATION LAYOUT

ALL DIMENSIONS IN INCHES [MM] UNLESS NOTED
 This drawing is the property of ABB INC. and contains proprietary and confidential information which must not be duplicated, used or disclosed other than expressly authorized by ABB INC.

EXTRA CREEP XPI-III ARRESTER (AA0)
 15 kV
 OUTLINE



ABB INC.
 Power Products Division
 100 Distribution Circle, Mt. Pleasant, PA 15666

CAD DRW PRDZ W/ID/FIRE 2.0	SHEET 1 OF 1
SCALE 1:00	REV.
ASSY - DWG.	4 0 4 1
OWN - KRYGOWSKI	
DRW - DJK	
APP - JPH	