

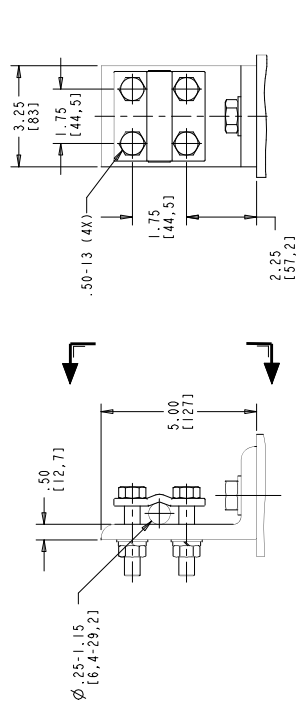
STYLE NO.	RATINGS (kV rms)		TOV (kV rms)	MAXIMUM RESIDUAL VOLTAGE WITH CURRENT WAVE (kV PEAK)						
	V _r	MCOV		WITH PRIOR ENERGY SINGLE IMPULSE OF 30/60 μS	SPL (S1PL) 8/20 μS	LPL (L1PL) 3 KA	10 KA	20 KA	10 KA	FWO 0.5 μS
0003SA002A	3	2.55	010 sec = 4.93	9.77	10.9	11.3	12.9	12.8		
0004SA003A	4	3.40	010 sec = 4.93	10.0	11.2	11.6	13.3	13.1		
0005SA004A	5	4.25	010 sec = 6.57	12.3	13.7	14.4	16.3	16.1		
0006SA005A	6	5.10	010 sec = 6.57	12.8	14.3	15.0	17.0	16.8		
0007SA006A	7	5.95	010 sec = 9.86	17.7	19.8	21.0	23.6	23.3		
0008SA007A	8	6.80	010 sec = 9.86	18.5	20.7	22.0	24.7	24.4		
0009SA008B	9	7.65	010 sec = 9.86	19.0	21.3	22.6	25.4	25.0		
0010SA009B	10	8.40	010 sec = 11.0	21.0	23.5	25.0	28.0	27.6		

ABB POLIM-S SURGE ARRESTER		
STYLING	BY	DATE
18 lbs		
NONE		
65		
STATION / E / 3		

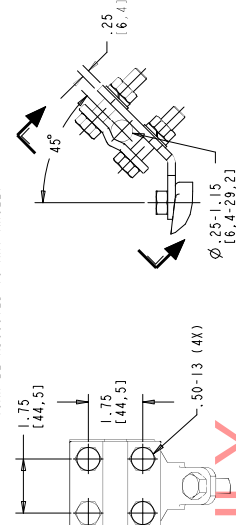
* ASSIGNED AT THE TIME OF PRODUCTION AND RECORDED IN THE PROPER LOCATIONS

FOR TENDER PURPOSES ONLY

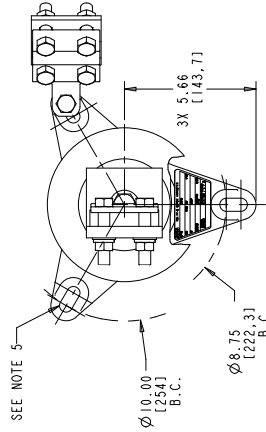
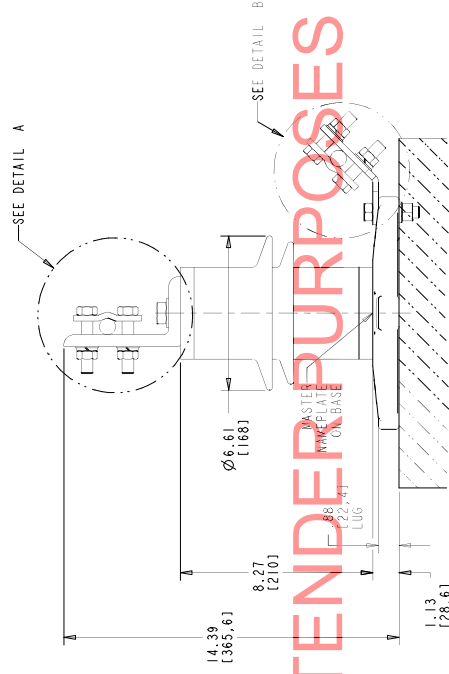
- NOTES:
- FOR MINIMUM PHASE-TO-GROUND AND PHASE-TO-PHASE CLEARANCES REFER TO IEEE C62.11 AND C62.22/ OTHER APPARATUS STANDARDS. SPECIFIC ALLOWANCE FOR CLEARANCE DISTANCES SPECIFIED.
 - GROUND TERMINALS WITH CLAMPS, AND 50 INCH HARDWARE
 - LINE & GROUND TERMINALS CAN ACCOMMODATE CU OR AL CABLE
 - SIZE NO. 2 TO 1000 MCM (1.25 (6.41) TO 1.15 (29.21) DIA. LINE & GROUND TERMINAL CLAMP CAN BE MOUNTED AS SHOWN OR ROTATED 90° AS REQUIRED.
 - MTG. SLOTS FOR .50 INCH HARDWARE (3) EQUALLY SPACED, THICKNESS OF LUG = .88 (22.4)
 - DESIGNED FOR VERTICAL OR HORIZONTAL MOUNT.
 - MAX CANTILEVER LOAD 20,000 In-lbs (2260 Nm).
 - LESSURE RELIEF CLASS 65 KA RMS SYMMETRICAL.
 - NOISE CRATE WEIGHT 18.0 LBS (8.2 kg).
 - MAXIMUM ARRESTER WEIGHT 18.0 lbs (8.2 kg).



DETAIL A
(ENLARGED)
SCALE 0.500
LINE TERMINAL (ALUMINUM)
(CAN BE ADJUSTED TO ANY ANGLE)



DETAIL B
(ENLARGED)
SCALE 0.500
GROUND TERMINAL (GALVANIZED)
(CAN BE ATTACHED TO ANY LUG)



DRILLING PLAN

ALL DIMENSIONS IN INCHES (MM) UNLESS NOTED
DIMENSIONS IN PARENTHESES ARE IN MILLIMETERS
USE OF DIMENSION LINE HAS BEEN AUTHORIZED BY ABB INC.

POLIM-S / IEEE STATION / IEC CLASS 3
POLYMER ARRESTER
2 SHED HOUSING OUTLINE

ABB INC. Power Products Division 500 Distribution Circle, W. Chester, PA 19380		SHEET 1 OF 1	
DATE: 2013	SCALE: 1:1	DRAWING NO: 4F4005	REV: 5
DESIGNED BY: [REDACTED]		CHECKED BY: [REDACTED]	
APPROVED BY: [REDACTED]		DATE: 4/15/13	

prb-s-06-d

REV. DESCRIPTION & DATE	REV. DESCRIPTION & DATE
01 FEBRUARY 9, 2010 NOTE 1: PRODUCT BULLETIN NOTE 7: LOAD WAS STRENGTHEN NOTE 11: THE BOX	02 JULY 26, 2011 ADDRESS UPDATED DKM
02 JULY 26, 2011 NOTE 9: GROUNDING DETAIL B: .25 ADDED DRILLING PLAN RELOCATED DKM	04 JULY 21, 2015 TITLE UPDATED NOTE 8 AND NAMEPLATE PRESSURE RELIEF CLASS 65 KA WAS 65 KA NOTE 1: UPDATED MISTAKE REPLACED WITH CORRECT DETAIL A: 5.00 WAS 5.03 1.49 WAS 1.42 88 LUG ADDED DETAIL A: 5.00 WAS 5.03 3.25 WAS 3.94 1.13 WAS 1.13 ANGLE) ADDED DKM
03 OCTOBER 25, 2013 NOTE 9: 11.3 WAS 11.0 DKM	05 MAY 14, 2018