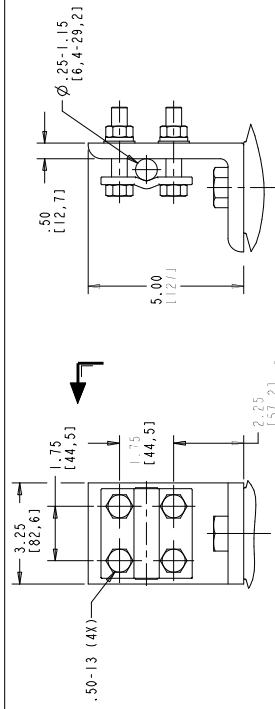


STYLE NO.	RATINGS (kV rms)		TOV (kV rms)	MAXIMUM RESIDUAL VOLTAGE WITH CURRENT WAVE (kV PEAK)				
	VOLTAGE V _r	MCOV V _{mco}		WITH PRIOR ENERGY SINGLE PULSE OF 8/20 μS	SPL (SIPL) LPL (LIPL) 30/60 μS	FW 0.5 μS		
				500 A	3 kA	10 kA	20 kA	10 kA
				STANDARD CREEP				
00036A002A	3	2.55	010 sec ± 4.93	9.77	10.9	11.3	12.9	12.8
00046A003A	4	3.40	010 sec ± 4.93	10.0	11.2	11.6	13.3	13.1
00056A004A	5	4.25	010 sec ± 6.57	12.3	13.7	14.4	16.3	16.1
00066A005A	6	5.10	010 sec ± 6.57	12.8	14.3	15.0	17.0	16.8
00086A007A	8	6.80	010 sec ± 9.86	18.5	20.7	22.0	24.7	24.4
00096A008A	9	7.65	010 sec ± 9.86	19.0	21.3	22.6	25.4	25.0
00106A008A	10	8.40	010 sec ± 11.0	21.0	23.5	25.0	28.0	27.6
00126A010A	12	10.2	010 sec ± 13.1	25.1	28.1	30.0	33.5	33.1
00156A012A	15	12.7	010 sec ± 16.4	31.3	35.0	37.5	41.8	41.2
00186A015A	18	15.3	010 sec ± 19.7	37.4	41.9	45.0	50.0	49.3
00216A017A	21	17.0	010 sec ± 23.0	41.8	46.9	50.4	55.9	55.2
00246A019A	24	19.5	010 sec ± 26.3	47.7	53.5	57.6	63.9	63.0
00276A022A	27	22.0	010 sec ± 29.6	53.6	60.1	64.8	71.8	70.8
00306A024A	30	24.4	010 sec ± 32.9	59.5	66.7	72.0	79.7	78.6
00336A027A	33	27.0	010 sec ± 36.1	65.4	73.4	79.2	87.6	86.4
00366A029A	36	29.0	010 sec ± 39.4	71.3	80.0	86.4	95.5	94.2
00396A031A	39	31.5	010 sec ± 42.7	77.3	86.6	93.6	103	102
00426A034A	42	34.0	010 sec ± 46.0	83.3	93.4	101	112	110
00456A037A	45	36.5	010 sec ± 49.3	89.1	99.9	108	119	118
00486A039A	48	39.0	010 sec ± 52.6	95.6	107	116	128	126

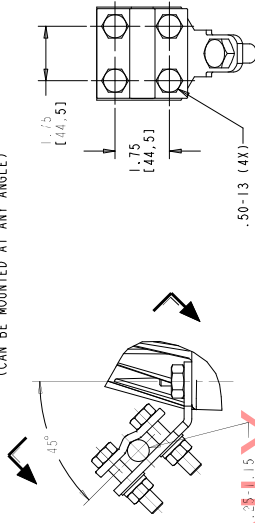
ABB	EXLIM SURGE ARRESTER	MADE IN USA
STYLE NO. *	RATING * kV	MADE IN USA
SERIAL NO. *	MCOV * kV	
IEEE/IEC CLASS * STATION / 3	PRESSURE RELIEF CLASS 65 IA	
DATE *	11/98 lbs	11/98 mm

MASTER NAMEPLATE (SSTL)
 * ASSIGNED AT THE TIME OF PRODUCTION AND RECORDED IN THE PROPER LOCATIONS

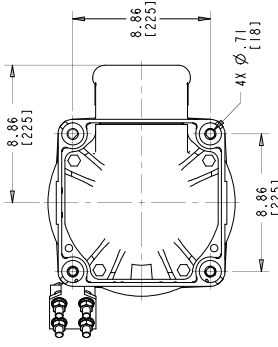
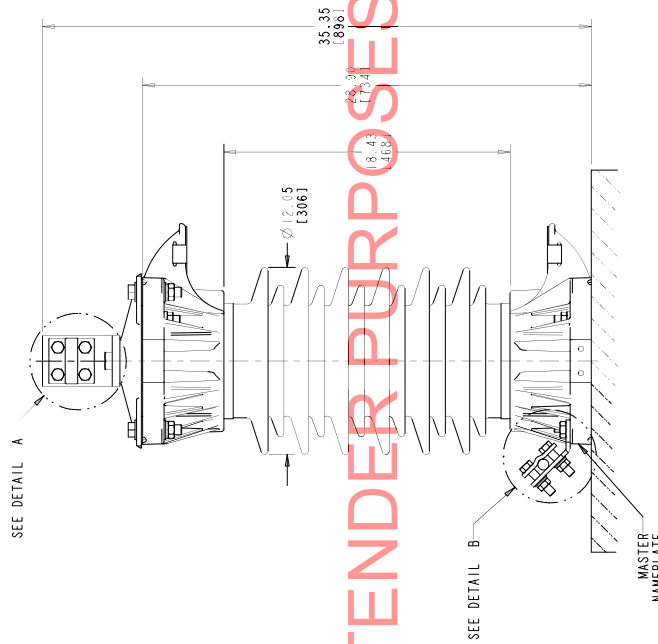
- NOTES:
- FOR MINIMUM PHASE-TO-GROUND AND PHASE-TO-PHASE CLEARANCES WITH TYPE EXLIM SURGE ARRESTERS. REFER TO THE EXLIM PRODUCT BULLETIN (26M110149). OTHER APPARATUS STANDARDS, OTHER SPECIFICATIONS OR LOCAL CODES MAY SUPERCEDE DISTANCES SPECIFIED.
 - ARRESTER ASSEMBLY CONSISTS OF ARRESTER UNIT, LINE & GROUND TERMINALS WITH GALVANIZED CLAMPS, AND .50 INCH HARDWARE.
 - LINE & GROUND TERMINALS CAN ACCOMMODATE CU OR AL CABLE.
 - LINE & GROUND TERMINAL CLAMP CAN BE MOUNTED AS SHOWN, OR ROTATED 90° AS REQUIRED.
 - MTG. HOLES FOR .825 INCH HARDWARE.
 - THICKNESS OF LUG = 1.38 [35.1]
 - DESIGN FOR VERTICAL MOUNT.
 - MAX CANTILEVER LOAD 159,313 in-lbs [18,000 Nm].
 - PRESSURE RELIEF CLASS IS 65 KA RMS SYMMETRICAL.
 - NOMINAL CREEPAGE DISTANCE 56.9 [1444].
 - MAXIMUM ARRESTER WEIGHT 198 lbs [90 kg].



DETAIL A
(ENLARGED)
SCALE: 0.500
LINE TERMINAL (ALUMINUM)
(CAN BE MOUNTED AT ANY ANGLE)



DETAIL B
(ENLARGED)
SCALE: 0.500
GROUND TERMINAL (GALVANIZED)
(CAN BE ATTACHED TO ANY LUG)



DRILLING PLAN

ALL DIMENSIONS IN INCHES [MM] UNLESS NOTED.
 THE DRAWING IS THE PROPERTY OF ABB INC. AND IS NOT TO BE REPRODUCED OR TRANSMITTED IN ANY FORM OR BY ANY MEANS, ELECTRONIC OR MECHANICAL, INCLUDING PHOTOCOPYING, RECORDING, OR BY ANY INFORMATION STORAGE AND RETRIEVAL SYSTEM, WITHOUT THE WRITTEN PERMISSION OF ABB INC.

EXLIM-Q IEEE STATION / IEC CLASS 3
 PORCELAIN ARRESTER
 1/2 SHED HOUSING OUTLINE

ABB INC. Power Products Division 100 Distribution Circle, Ft. Pittsburg, PA 15066	
SCALE: AS SHOWN	SHEET 1 OF 1
DATE: 08/05/01	4F7502
REV: 1	1

pro.e-06-d

FOR TENDER PURPOSES ONLY