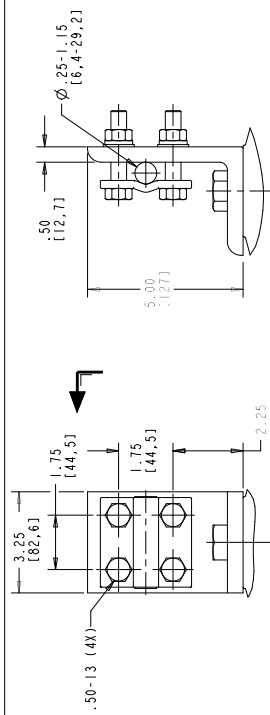


STYLE NO.	RATINGS (kV rms)		TOV (kV rms)	MAXIMUM RESIDUAL VOLTAGE WITH CURRENT WAVE (kV PEAK)				
	V <sub>r</sub>	V <sub>mcov</sub>		SPL (SIPL) 30/60 μS	LPL (LIPL) 8/20 μS			
P0036A002AP	3	2.55	010 sec ± 5.12	9.18	10.1	10.4	11.9	11.6
P046A003AP	4	3.40	010 sec ± 5.12	9.18	10.1	10.4	11.9	11.6
P055A004AP	5	4.25	010 sec ± 6.83	12.0	13.2	13.8	15.7	15.3
P066A005AP	6	5.10	010 sec ± 6.83	12.0	13.2	13.8	15.7	15.3
P088A007AP	8	6.80	010 sec ± 10.2	17.8	19.5	20.7	23.2	22.6
P099A008AP	9	7.65	010 sec ± 10.2	17.8	19.5	20.7	23.2	22.6
P012GA010AP	10	8.40	010 sec ± 11.4	20.7	22.8	24.2	27.1	26.4
P015GA012AP	12	10.2	010 sec ± 13.7	23.5	25.9	27.6	30.8	30.0
P018GA015AP	15	12.7	010 sec ± 17.1	29.3	32.2	34.5	38.4	37.4
P021GA017AP	18	15.3	010 sec ± 20.5	35.1	38.6	41.4	46.0	44.8
P024GA019AP	21	17.0	010 sec ± 23.9	40.8	44.9	48.3	53.5	52.2
P027GA022AP	24	19.5	010 sec ± 27.3	46.6	51.3	55.2	61.1	59.6
P030GA024AP	27	22.0	010 sec ± 30.7	52.4	57.6	62.1	68.7	66.9
P033GA027AP	30	24.4	010 sec ± 34.1	58.1	64.0	69.0	76.3	74.3
P036GA029AP	33	27.0	010 sec ± 37.6	64.0	70.4	76.0	83.9	81.8
P039GA031AP	36	29.0	010 sec ± 41.0	69.0	75.9	82.0	90.5	88.2
P042GA034AP	39	31.5	010 sec ± 44.4	74.8	82.4	89.0	98.2	95.7
P045GA037AP	42	34.0	010 sec ± 47.8	80.7	88.8	96.0	106	103
P048GA039AP	45	36.5	010 sec ± 51.2	86.5	95.3	103	114	111
P048GA039AP	48	39.0	010 sec ± 54.6	92.4	102	110	121	118

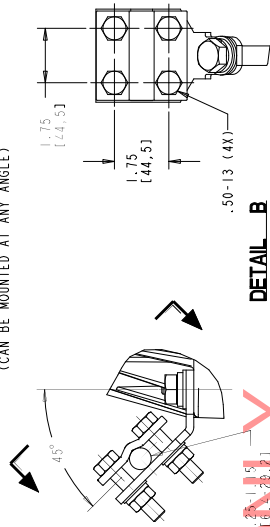
<b>ABB</b> EXLIM SURGE ARRESTER		MADE IN USA	
STYLE NO. *	***	RATING * kV	LV
SERIAL NO. *	***	MCW * LV	○
IEEE/IEC CLASS	STATION / 4	PRESSURE RELIEF CLASS	65 IA
DATE *	***	WT 198 lbs	MM

**MASTER NAMEPLATE (SSTL)**  
 \* ASSIGNED AT THE TIME OF PRODUCTION AND RECORDED IN THE PROPER LOCATIONS

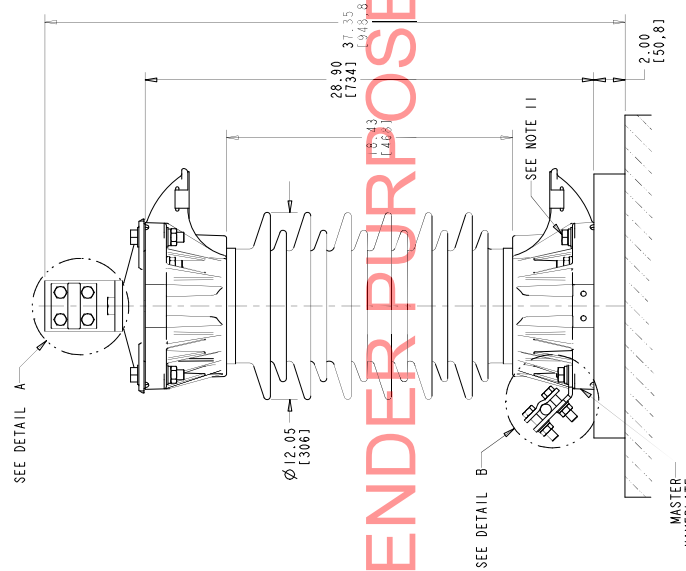
- NOTES:
- FOR MINIMUM PHASE-TO-GROUND AND PHASE-TO-PHASE CLEARANCES WITH THIS TYPE EXLIM SURGE ARRESTERS (10009), OTHER APPARATUS STANDARDS, RULES AND REGULATIONS OR LOCAL CODES MAY SUPERSEDE DISTANCES SPECIFIED IN THIS ARRESTER ASSEMBLY CONSISTS OF ARRESTER UNIT, LINE & GROUND TERMINALS WITH GALVANIZED CLAMPS, AND .50 INCH HARDWARE.
  - LINE & GROUND TERMINALS CAN ACCOMMODATE CU OR AL CABLE.
  - SIZE NO. 2 TO 1000 MCM (.25 (6.4) TO 1.15 (29.2) DIA.
  - LINE & GROUND TERMINAL CLAMP CAN BE MOUNTED AS SHOWN OR ROTATED 90° AS REQUIRED.
  - MTG. HOLES FOR .625 INCH HARDWARE.
  - THICKNESS OF LUG = 1.38 (35.1)
  - MCS (MOUNTING LEVER) L59 313
  - PRESSURE RELIEF CLASS IS 65 IA RBS SYMMETRICAL.
  - NOMINAL CREEPAGE DISTANCE 56.9 (1444)
  - MAXIMUM ARRESTER WEIGHT 188 lbs (90 kg)
  - AFTER MOUNTING ADAPTER PLATE TO GROUND OR STRUCTURE, ATTACH ARRESTER TO ADAPTER PLATE USING M16 GALVANIZED BOLT WITH GALVANIZED FLAT WASHER AND LOCK WASHER. TORQUE TO 150 FT-LBS.



**DETAIL A**  
(ENLARGED)  
SCALE: 0.500  
**LINE TERMINAL (ALUMINUM)**  
(CAN BE MOUNTED AT ANY ANGLE)



**DETAIL B**  
(ENLARGED)  
SCALE: 0.500  
**GROUND TERMINAL (GALVANIZED)**  
(CAN BE ATTACHED TO ANY LUG)



**DRILLING PLAN**

ALL DIMENSIONS IN INCHES (MM) UNLESS NOTED	
EXLIM-P IEEE STATION / IEC CLASS 4 GREY PORCELAIN ARRESTER WITH 10" BC ADAPTER PLATE	
ABB INC. Power Products Division 500 Distribution Circle, Ft. Peck, PA 15045	ABB INC. Power Products Division 500 Distribution Circle, Ft. Peck, PA 15045
SCALE: AS SHOWN	SHEET 1 OF 1
DATE: 01/29/2018	4E8347
REV: 1	1