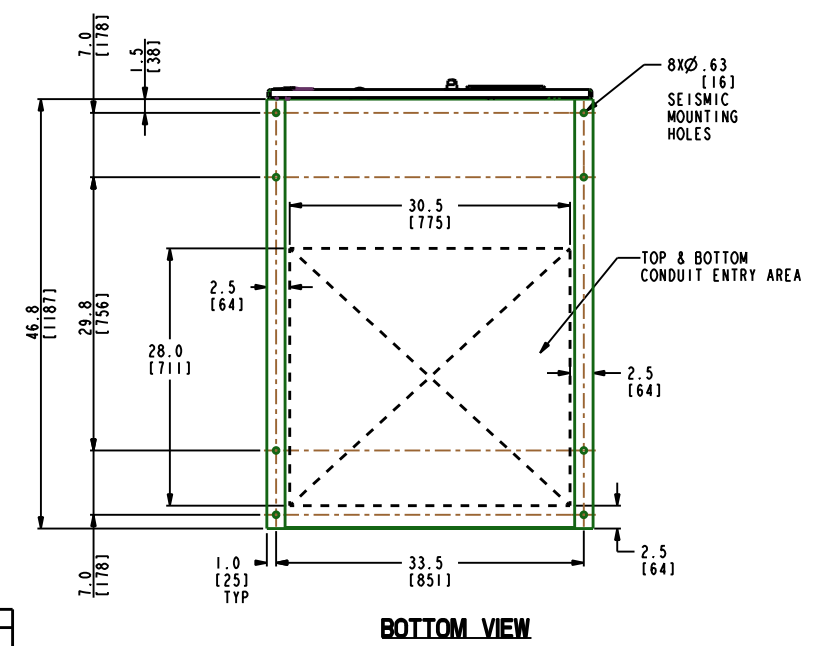
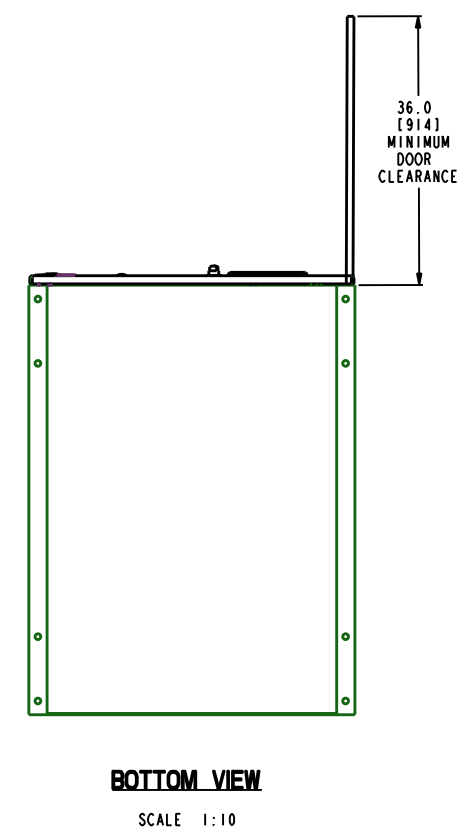
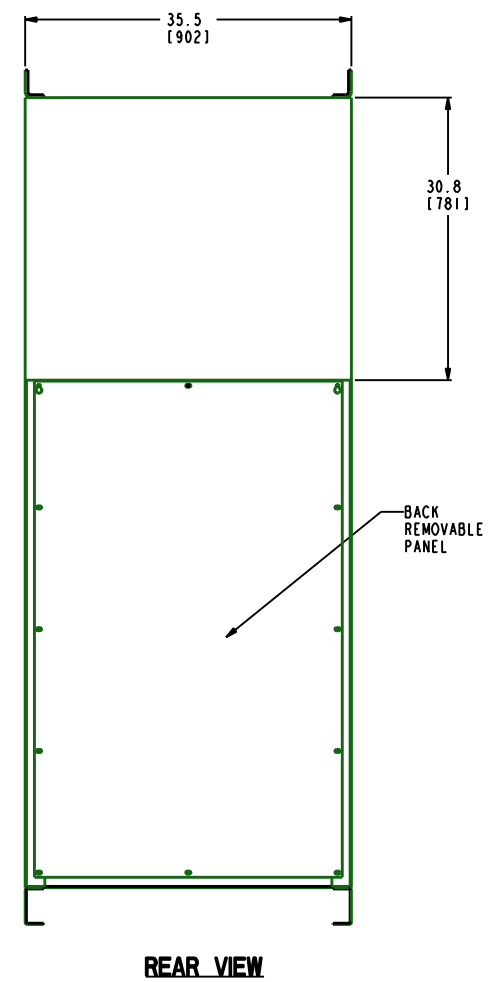
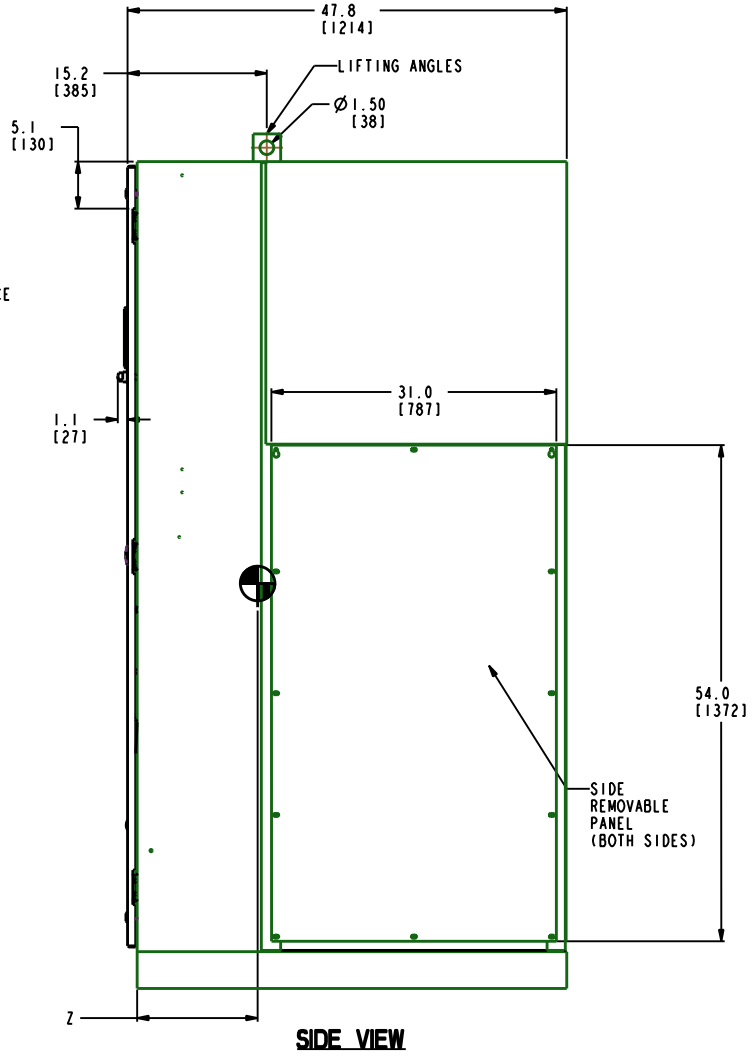
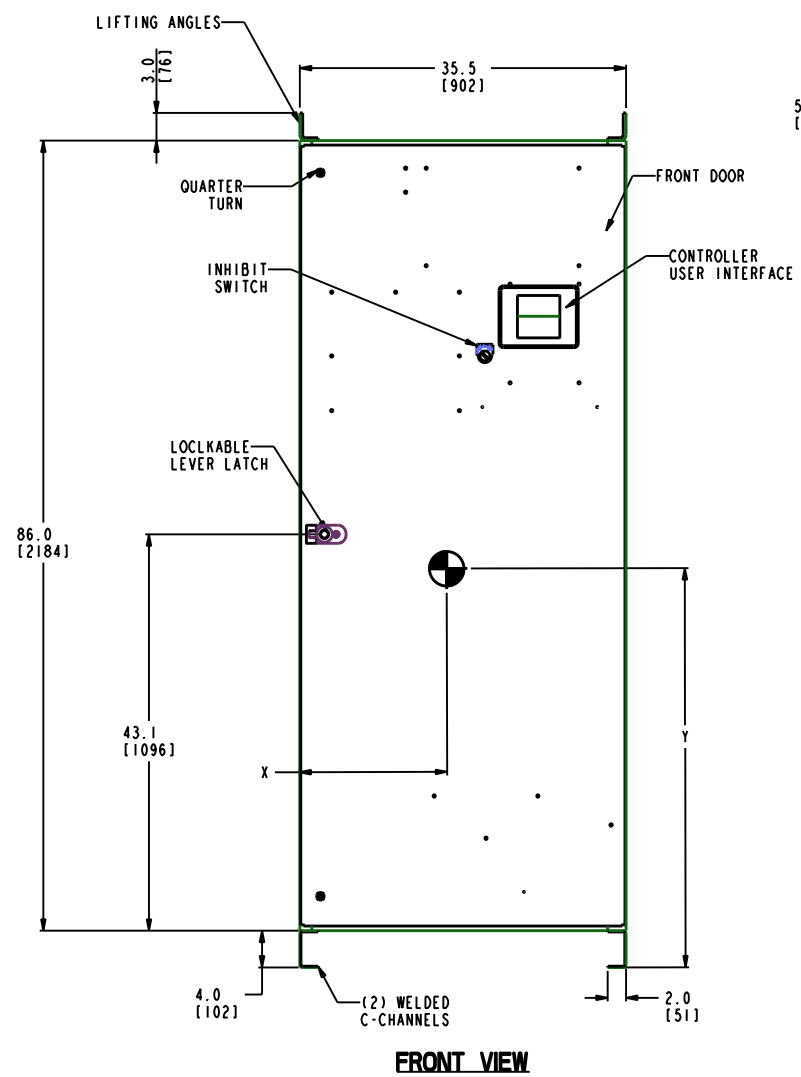


GE PROPRIETARY AND CONFIDENTIAL INFORMATION
 This document is the property of General Electric Company ("GE") and contains proprietary information of GE. This document is loaned on the express condition that neither it nor the information contained therein shall be disclosed to others without the express written consent of GE Energy, and that the information shall be used only for the purposes expressly approved by GE Energy. This document shall be returned to GE upon its request. This document may be subject to certain restrictions under U.S. export control laws and regulations.

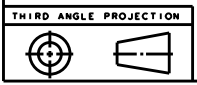
SIZE	DRAWING NO.	REV	SHEET
D	50C-1051	1	1
REVISIONS			
REV.	DESCRIPTION	DATE	APPROVED
1	CO48458 ESTABLISHED DWG	09/14/18	YP MAS



AMP	POLE	CONTROLLER TYPE	CABINET #	CABLE RANGE	WEIGHT LB(KG)	CENTER OF GRAVITY IN(MM)		
						X	Y	Z
1600-3000A	3	MX150/ MX250/ MX350	F-1864MP	QTY 8 #2-600 MCM (33-304 MM ²)	1375(624)	18.5 (470)	38.0 (965)	15.0 (381)
	4				1480(671)			

- NOTES**
- ENCLOSURE : NEMA-1 TYPE, FREE STANDING, FLOOR MOUNT.
 - MATERIAL: 10 GA (.134) 1018 HRS REF.
 - FINISH : ANSI 61 GREY
 - CONSTRUCTION PER UL 1008 STANDARD.
 - ALL CABLE ENTRY IS IN REAR OF CABINET.
 - SUITABLE WIRE BENDING SPACE PROVIDED PER THE SAFETY AGENCY STANDARDS.
 - UL AND CSA RECOGNIZED/CERTIFIED MECHANICAL OR COMPRESSION LUGS ARE AVAILABLE AS AN OPTION.
 - EQUIPMENT GROUND LUG IS PROVIDED IN ALL UNITS. REFER SHEET 2 FOR DETAILS.
 - ALL DIMENSIONS ARE FOR REFERENCE ONLY AND SHOWN IN INCHES(MILLIMETERS).
 - 100% RATED SOLID/SWITCHED NEUTRAL PROVIDED PER THE SWITCH CONFIGURATION.
 - SUITABLE FOR TOP AND/OR BOTTOM CABLE ENTRY.
 - SIDES AND REAR SKINS ARE REMOVABLE FOR CABLE CONNECTIONS.

- SEISMIC NOTES:**
- BOLT ENCLOSURE FROM C-CHANNEL BASE (SEE DETAIL B) USING THE FOLLOWING SEISMIC CERTIFIED MOUNTING HARDWARE PER MOUNTING HOLE: (HARDWARE PROVIDED BY INSTALLER).
 #1/2-13 GRADE 5 BOLT TORQUE TO 70 FT-LBS. (95 NEWTON METERS).
 #1/2-13 STANDARD FLAT WASHER.
 #1/2 (13) HELICAL SPRING LOCK WASHER.
 - CENTER OF GRAVITY DIMENSIONS ARE FOR REFERENCE ONLY.
 - FOR WORKING CLEARANCE REFER TO NATIONAL AND LOCAL CODES AND STANDARDS.



Part must conform to SI 900000 Sect. 4, Toxicity Procedure

FOR ADDITIONAL INFO REFER TO: APPLIED PRACTICES	SIGNATURES	DATE
DIMENSIONS ARE IN INCHES UNLESS OTHERWISE SPECIFIED IN DRAWING	MODEL	YP 09/14/18
TOLERANCE ON: 1 PL DECIMALS ± 0.1 2 PL DECIMALS ± 0.02 3 PL DECIMALS ± 0.005 ANGLES ± 1.0 FRACTIONS ± FINISH	CHECKED	YP 09/15/18
CRITICAL TO QUALITY CHARACTERISTIC	ENGNG	
	ISSUED	
	DRAWING FILE: 50C-1051	
	SOLID MODEL: 50C-1051	

GE Energy

1600-3000A ATS LAYOUT WITH NEMA-1 CABINET FOR STD, DELAY & CLOSED TRANSITION

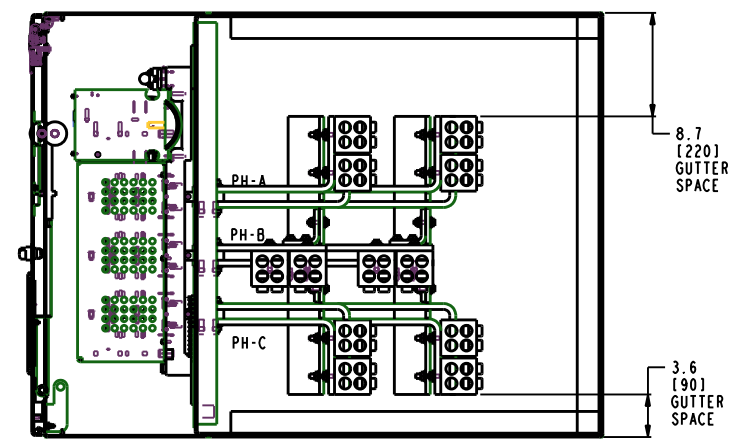
SCALE: 1:20

50C-1051 1

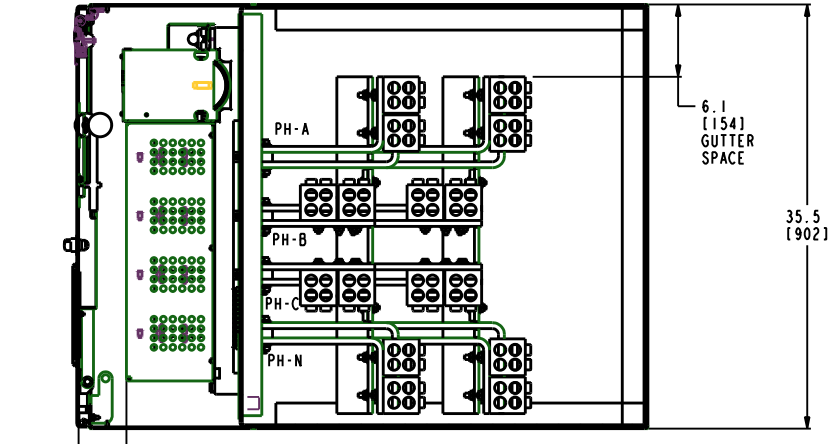
SHEET 1 OF 3

GE PROPRIETARY AND CONFIDENTIAL INFORMATION
 This document is the property of General Electric Company ("GE") and contains proprietary information of GE. This document is loaned on the express condition that neither it nor the information contained therein shall be disclosed to others without the express written consent of GE Energy, and that the information shall be used by the recipient only as approved expressly by GE Energy. This document shall be returned to GE upon its request. This document may be subject to certain restrictions under U.S. export control laws and regulations.

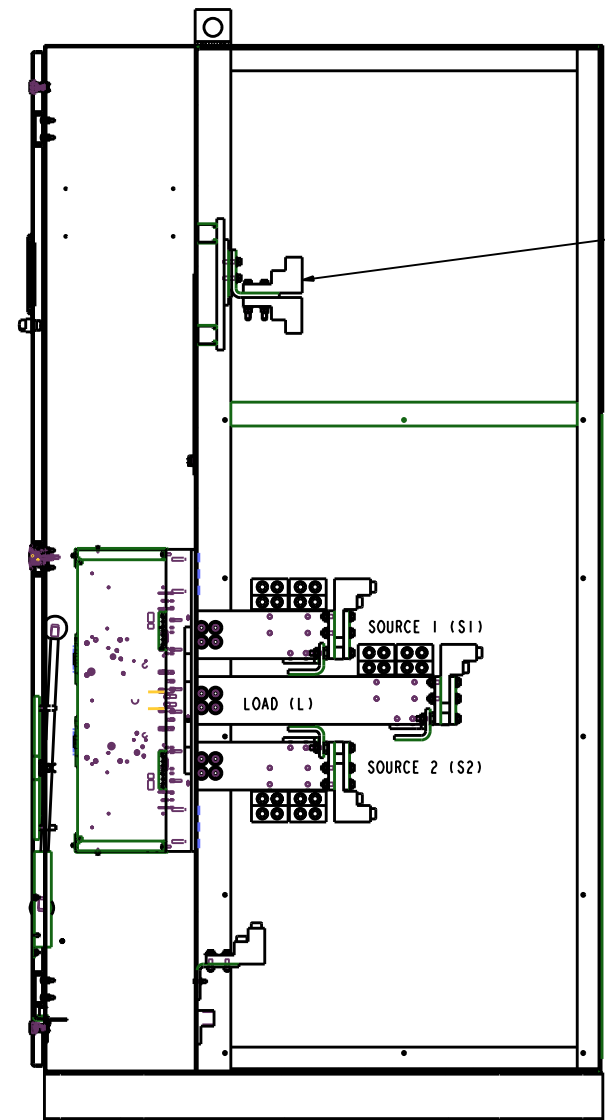
SIZE	DRAWING NO.	REV	SHEET
D	50C-1051	1	2
REVISIONS			
REV.	DESCRIPTION	DATE	APPROVED



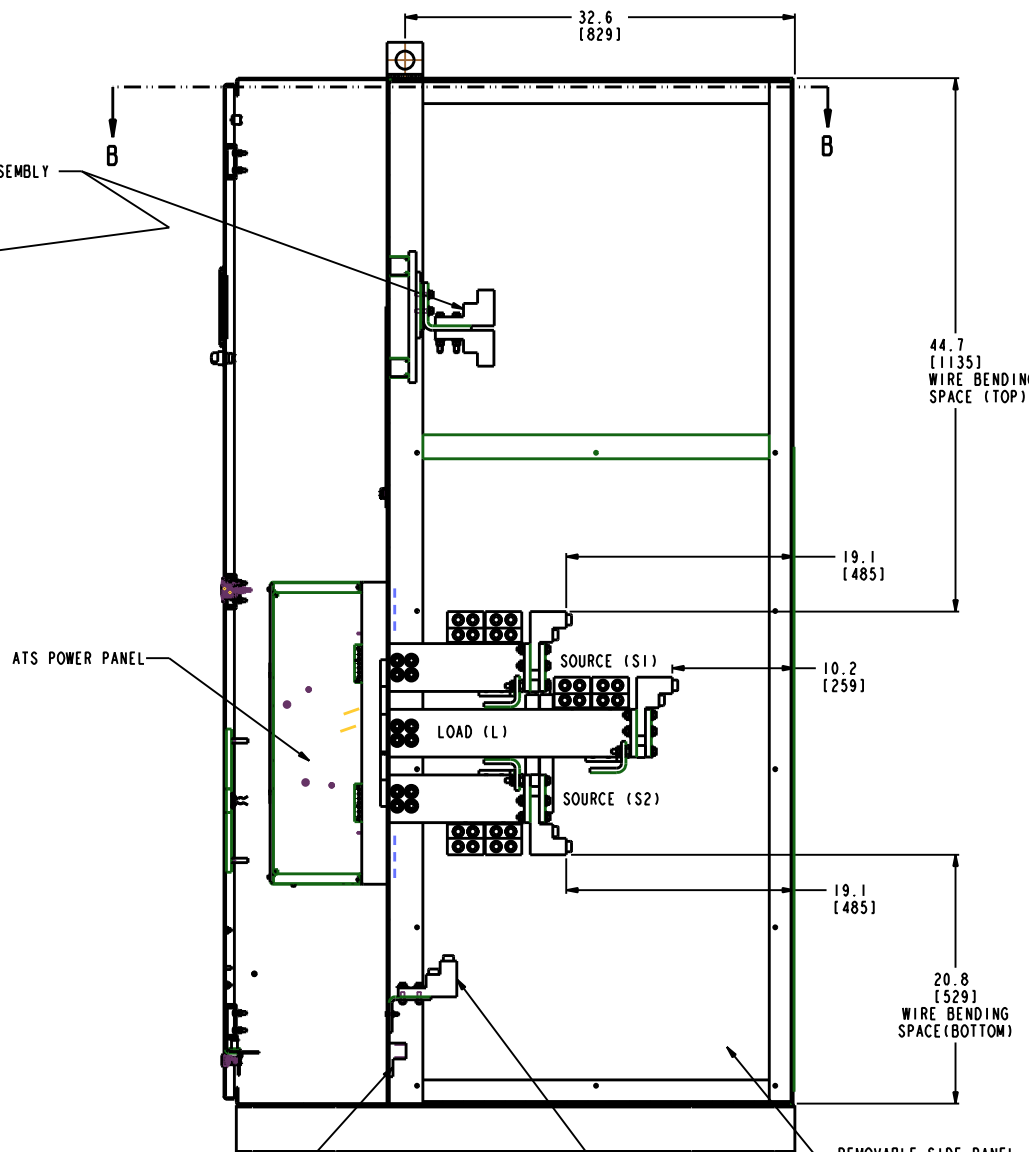
TOP VIEW SECTION B-B (3-POLE UNIT)



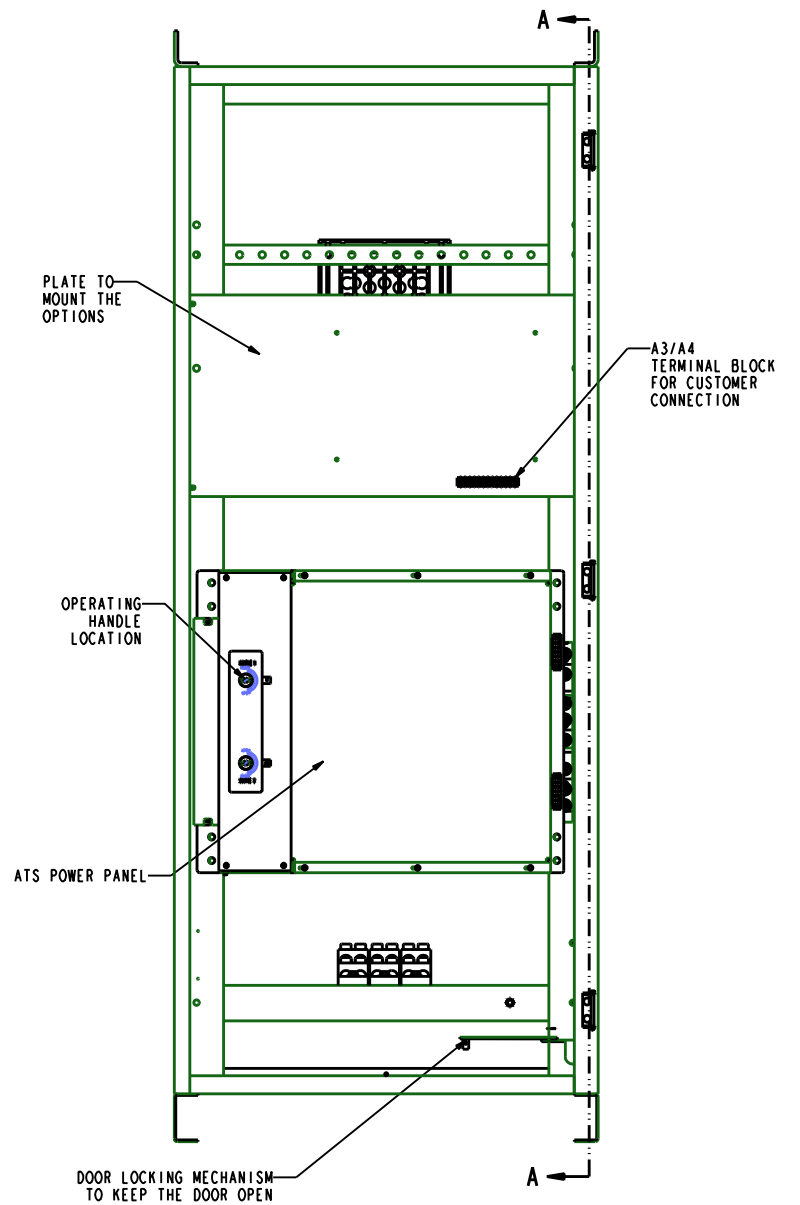
TOP VIEW SECTION B-B (4-POLE UNIT)



SECTION A-A SCALE 13:100 RIGHT SIDE VIEW (3-POLE UNIT)



SECTION A-A SCALE 13:100 RIGHT SIDE VIEW (4-POLE UNIT)



FRONT VIEW (WITHOUT DOOR) (STD TRANSITION PANEL SHOWN)

NOTE:
 1. REFER TO SHEET (1) FOR COMPLETE NOTE DETAILS
 2. MECHANICAL LUG SHOWN IN ABOVE VIEWS ARE FOR REFERENCE ONLY.

Part must conform to SI 900000 Sect. 4, Toxicity Procedure

FOR ADDITIONAL INFO REFER TO:	SIGNATURES	DATE
APPLIED PRACTICES	MODEL	YP 09/14/18
DIMENSIONS ARE IN INCHES	CHECKED	YP 09/15/18
UNLESS OTHERWISE SPECIFIED IN DRAWING	ENGRG	
TOLERANCE ON:	ISSUED	
1 PL DECIMALS ± 0.1		
2 PL DECIMALS ± 0.02		
3 PL DECIMALS ± 0.005		
ANGLES ± 1.0		
FRACTIONS ±		
FINISH		
CRITICAL TO QUALITY CHARACTERISTIC	DRAWING FILE: 50C-1051	
	SOLID MODEL: 50C-1051	

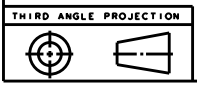
GE Energy

TITLE
1600-3000A ATS LAYOUT WITH NEMA-1 CABINET FOR STD, DELAY & CLOSED TRANSITION

SIZE D DRAWING
 SCALE: 1:20

REV 1
 50C-1051

SHEET 2 OF 3



38

37

36

35

34

33

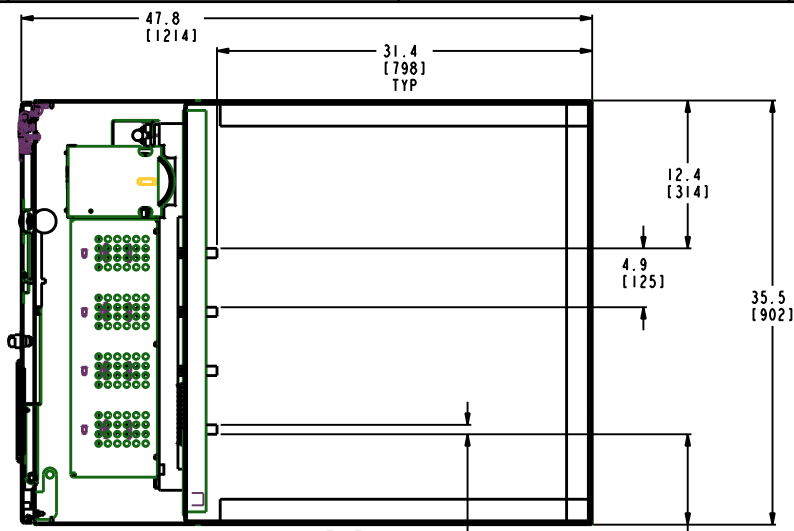
SIZE D DRAWING NO.

50C-1051 1 3

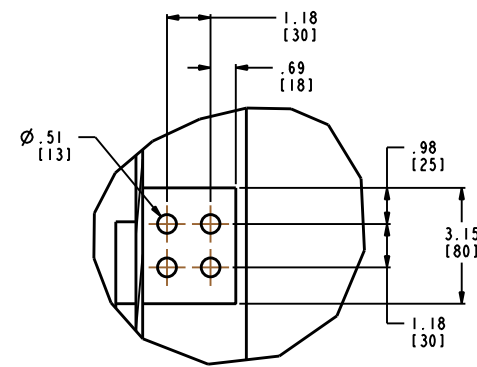
31

GE PROPRIETARY AND CONFIDENTIAL INFORMATION
 This document is the property of General Electric Company ("GE") and contains proprietary information of GE. This document is loaned on the express condition that neither it nor the information contained therein shall be disclosed to others without the express written consent of GE Energy, and that the information shall be used only for the purposes expressly approved by GE Energy. This document shall be returned to GE upon its request. This document may be subject to certain restrictions under U.S. export control laws and regulations.

REVISIONS			
REV.	DESCRIPTION	DATE	APPROVED

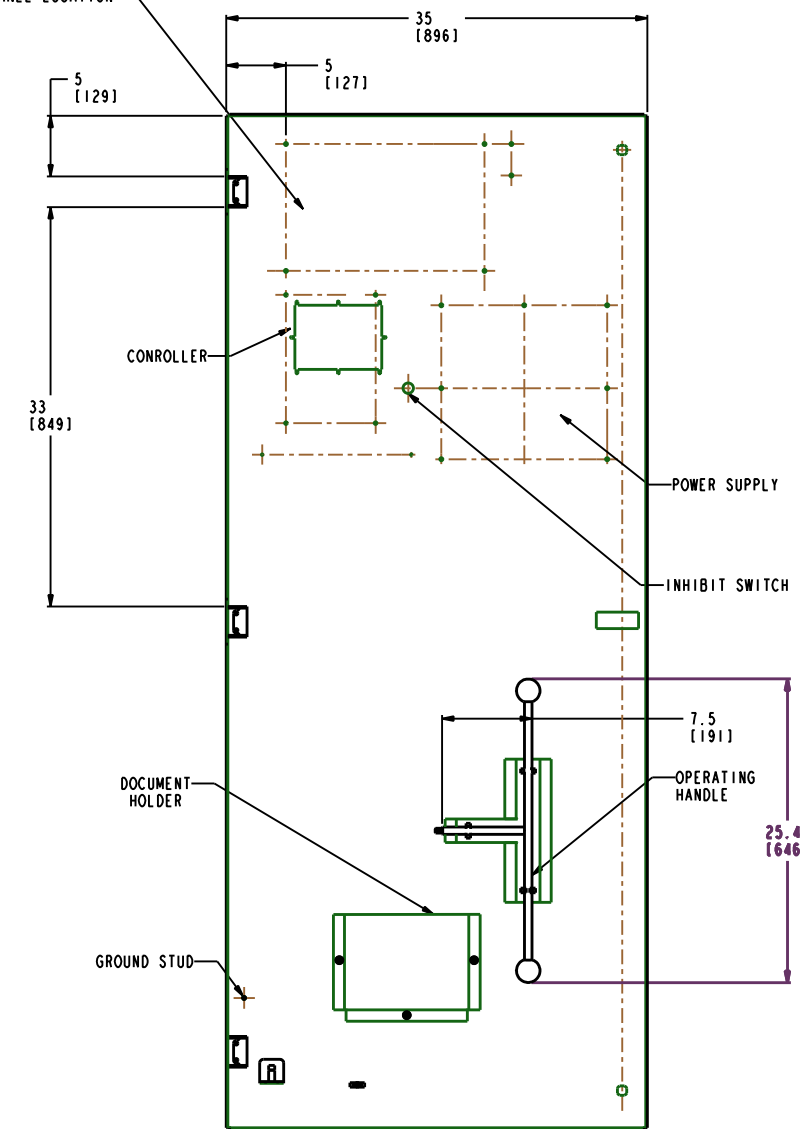


SECTION B-B
 TOP VIEW
 (4-POLE UNIT)

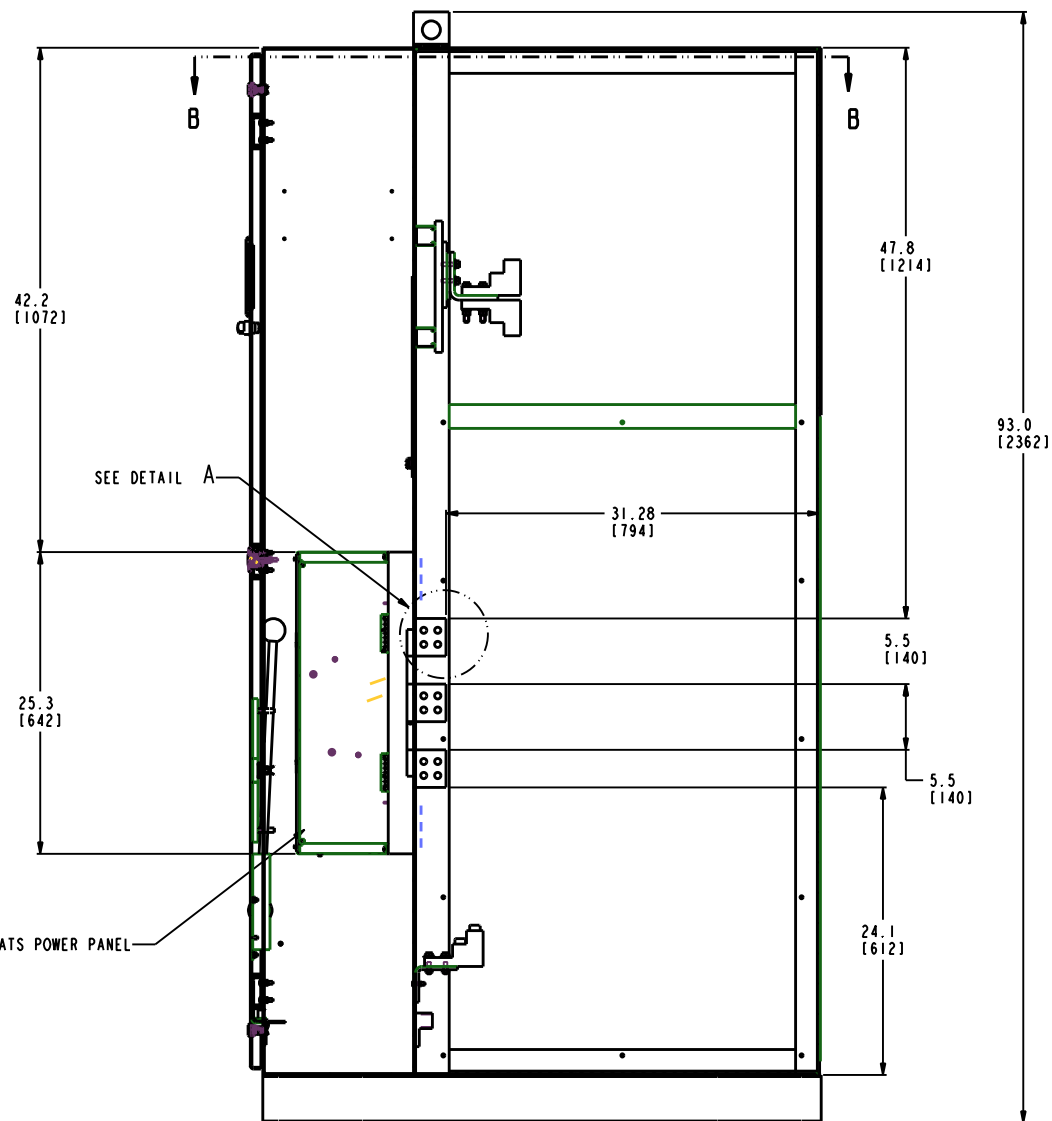


DETAIL A
 SCALE 2:5

AUXILIARY PANEL LOCATION FOR OPTIONS



INSIDE DOOR VIEW
 SCALE 13:100

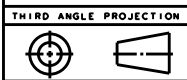


SECTION A-A
 SCALE 13:100

RIGHT SIDE VIEW

NOTE :

1. REFER SHEET(1) FOR MORE DETAILS.
2. VIEW SHOWS ON THIS SHEET ARE WITHOUT LUGS.
3. THIS CONFIGURATION CAN BE USED FOR BUS CONNECTION.



Part must conform to SI 900000 Sect. 4, Toxicity Procedure

FOR ADDITIONAL INFO REFER TO: APPLIED PRACTICES	SIGNATURES	DATE
DIMENSIONS ARE IN INCHES UNLESS OTHERWISE SPECIFIED IN DRAWING	MODEL	YP 09/14/18
TOLERANCE ON: 1 PL DECIMALS ± 0.1 2 PL DECIMALS ± 0.02 3 PL DECIMALS ± 0.005 ANGLES ± 1.0 FRACTIONS ± FINISH	CHECKED	YP 09/15/18
CRITICAL TO QUALITY CHARACTERISTIC	ENGRG	
	MFG	
	QUALITY	
	ISSUED	
	DRAWING FILE: 50C-1051	
	SOLID MODEL: 50C-1051	

GE Energy

TITLE
1600-3000A ATS LAYOUT WITH NEMA-1 CABINET FOR STD, DELAY & CLOSED TRANSITION

SIZE D DRAWING
 SCALE: 1:20

REV 1
 50C-1051

SHEET 3 OF 3