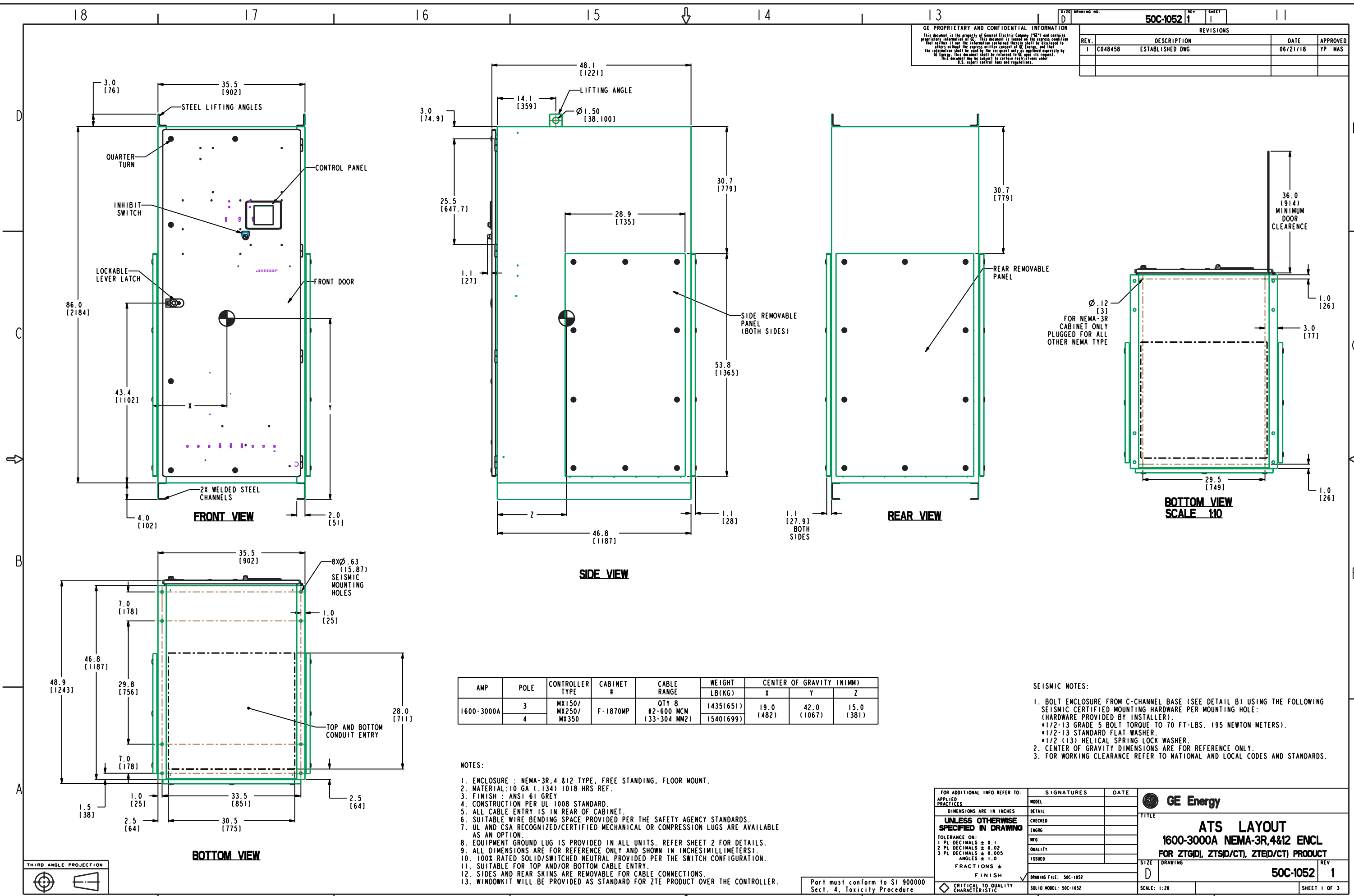


GE PROPRIETARY AND CONFIDENTIAL INFORMATION  
 This document is the property of General Electric Company ("GE") and contains proprietary information of GE. This document is loaned on the express condition that neither it nor the information contained therein shall be disclosed to others without the express written consent of GE Energy, and that the information shall be used by the recipient solely for purposes expressly by GE Energy. This document shall be returned to GE upon its request. This document may be subject to certain restrictions under U.S. export control laws and regulations.

SIZE	DRAWING NO.	REV	SHEET
D	50C-1052	1	1
REVISIONS			
REV.	DESCRIPTION	DATE	APPROVED
1	C048458 ESTABLISHED DWG	06/21/18	YP MAS



AMP	POLE	CONTROLLER TYPE	CABINET #	CABLE RANGE	WEIGHT LB(KG)	CENTER OF GRAVITY IN(MM)		
						X	Y	Z
1600-3000A	3	MX150/ MX250/ MX350	F-1870MP	QTY 8 #2-600 MCM (33-304 MM2)	1435(651) 1540(699)	19.0 (482)	42.0 (1067)	15.0 (381)
	4							

- NOTES:
- ENCLOSURE : NEMA-3R,4 &12 TYPE, FREE STANDING, FLOOR MOUNT.
  - MATERIAL: 10 GA (.134) 1018 HRS REF.
  - FINISH : ANS1 61 GREY
  - CONSTRUCTION PER UL 1008 STANDARD.
  - ALL CABLE ENTRY IS IN REAR OF CABINET.
  - SUITABLE WIRE BENDING SPACE PROVIDED PER THE SAFETY AGENCY STANDARDS.
  - UL AND CSA RECOGNIZED/CERTIFIED MECHANICAL OR COMPRESSION LUGS ARE AVAILABLE AS AN OPTION.
  - EQUIPMENT GROUND LUG IS PROVIDED IN ALL UNITS. REFER SHEET 2 FOR DETAILS.
  - ALL DIMENSIONS ARE FOR REFERENCE ONLY AND SHOWN IN INCHES(MILLIMETERS).
  - 100% RATED SOLID/SWITCHED NEUTRAL PROVIDED PER THE SWITCH CONFIGURATION.
  - SUITABLE FOR TOP AND/OR BOTTOM CABLE ENTRY.
  - SIDES AND REAR SKINS ARE REMOVABLE FOR CABLE CONNECTIONS.
  - WINDOWKIT WILL BE PROVIDED AS STANDARD FOR ZTE PRODUCT OVER THE CONTROLLER.

- SEISMIC NOTES:
- BOLT ENCLOSURE FROM C-CHANNEL BASE (SEE DETAIL B) USING THE FOLLOWING SEISMIC CERTIFIED MOUNTING HARDWARE PER MOUNTING HOLE: (HARDWARE PROVIDED BY INSTALLER).  
 • 1/2-13 GRADE 5 BOLT TORQUE TO 70 FT-LBS. (95 NEWTON METERS).  
 • 1/2-13 STANDARD FLAT WASHER.  
 • 1/2 (13) HELICAL SPRING LOCK WASHER.
  - CENTER OF GRAVITY DIMENSIONS ARE FOR REFERENCE ONLY.
  - FOR WORKING CLEARANCE REFER TO NATIONAL AND LOCAL CODES AND STANDARDS.

FOR ADDITIONAL INFO REFER TO: APPLIED PRACTICES	SIGNATURES	DATE
DIMENSIONS ARE IN INCHES UNLESS OTHERWISE SPECIFIED IN DRAWING	MODEL	
TOLERANCE ON: 1 PL DECIMALS ± 0.1 2 PL DECIMALS ± 0.02 3 PL DECIMALS ± 0.005 ANGLES ± 1.0 FRACTIONS ± FINISH	CHECKED	
CRITICAL TO QUALITY CHARACTERISTIC	ENGRG	
	MFG	
	QUALITY	
	ISSUED	
	DRAWING FILE: 50C-1052	
	SOLID MODEL: 50C-1052	

**GE Energy**

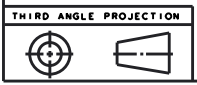
TITLE  
**ATS LAYOUT**  
**1600-3000A NEMA-3R,4&12 ENCL**  
**FOR ZTGD, ZTSD/CT, ZTED/CT) PRODUCT**

SCALE: 1:20

DRAWING NO. 50C-1052 REV 1

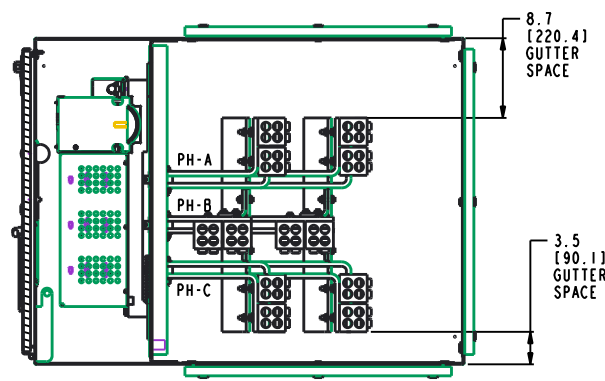
SHEET 1 OF 3

Part must conform to SI 900000 Sect. 4, Toxicity Procedure

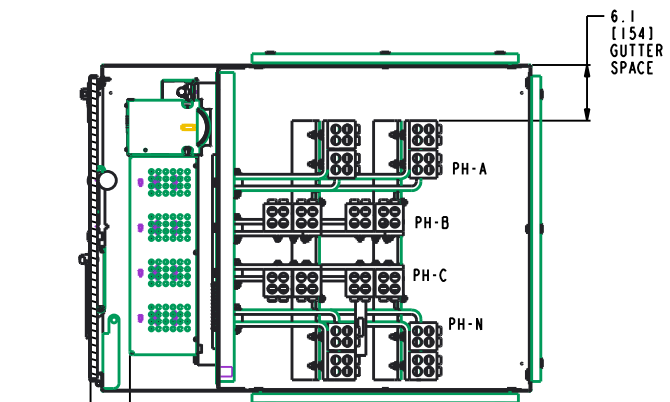


GE PROPRIETARY AND CONFIDENTIAL INFORMATION  
 This document is the property of General Electric Company ("GE") and contains proprietary information of GE. This document is loaned on the express condition that neither it nor the information contained therein shall be disclosed to others without the express written consent of GE Energy, and that the information shall be used by the recipient solely for purposes expressly by GE Energy. This document shall be returned to GE upon its request. This document may be subject to certain restrictions under U.S. export control laws and regulations.

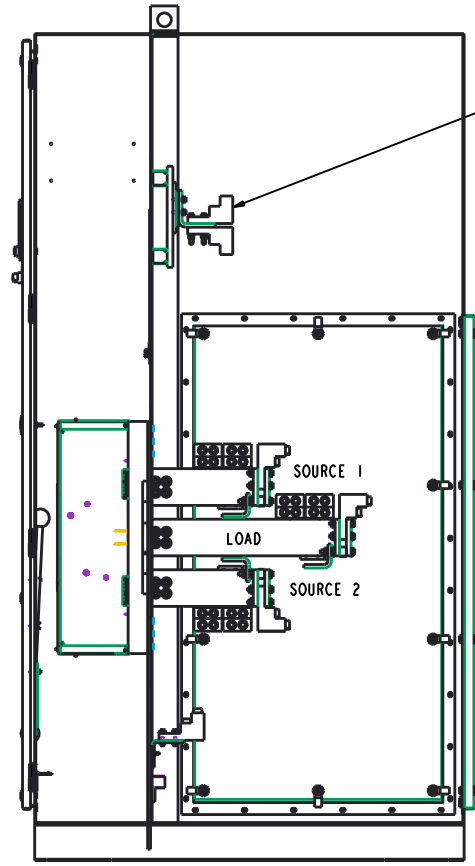
SIZE	DRAWING NO.	REV	SHEET
D	50C-1052	1	2
REVISIONS			
REV.	DESCRIPTION	DATE	APPROVED



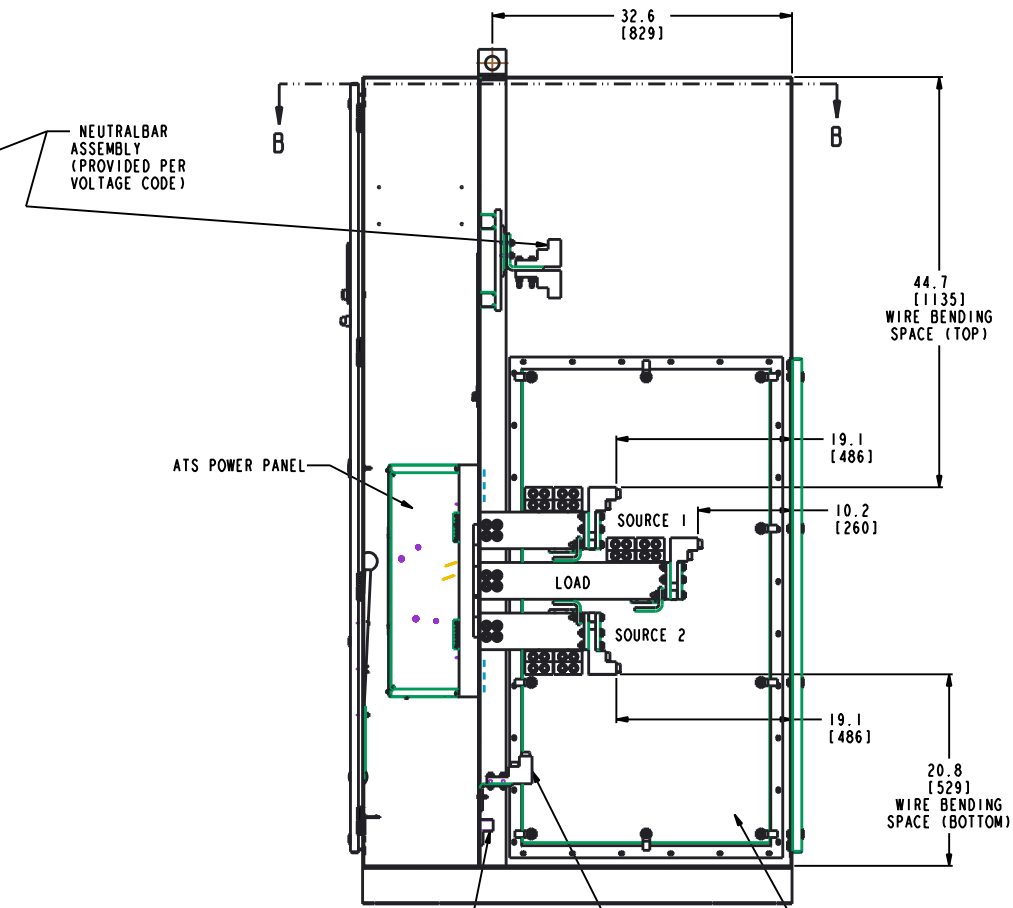
**TOP VIEW SECTION B-B (3-POLE UNIT SHOWN)**



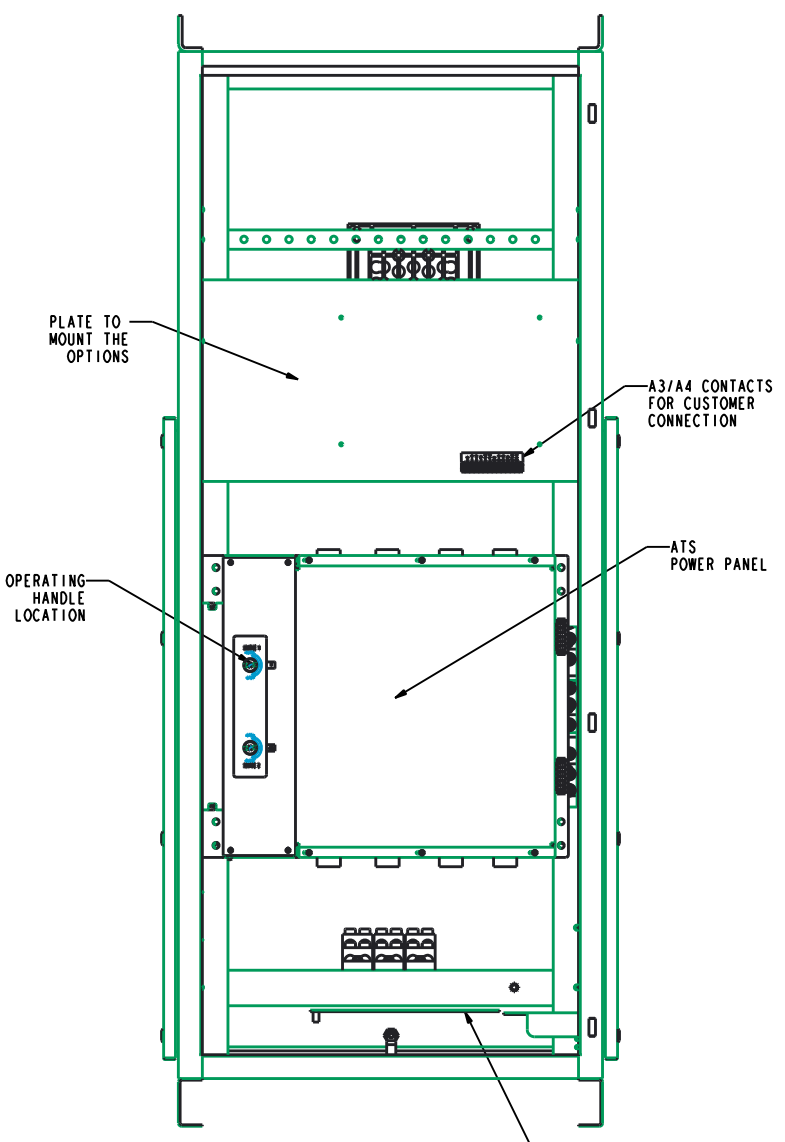
**TOP VIEW SECTION B-B (4-POLE UNIT SHOWN)**



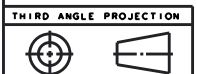
**RIGHT SIDE VIEW 3-POLE UNIT WITH MECHANICAL LUG**  
SECTION A-A  
SCALE 1:10



**RIGHT SIDE VIEW 4-POLE UNIT WITH MECHANICAL LUGS**



**FRONT VIEW (WITHOUT DOOR)**  
SCALE 13:100



Part must conform to SI 900000 Sect. 4, Toxicity Procedure

FOR ADDITIONAL INFO REFER TO:	SIGNATURES	DATE
APPLIED PRACTICES	MODEL	
DIMENSIONS ARE IN INCHES UNLESS OTHERWISE SPECIFIED IN DRAWING	DETAIL	
TOLERANCE ON:	CHECKED	
1 PL DECIMALS ± 0.1	ENGRG	
2 PL DECIMALS ± 0.02	MFG	
3 PL DECIMALS ± 0.005	QUALITY	
ANGLES ± 1.0	ISSUED	
FRACTIONS ± FINISH	DRAWING FILE: 50C-1052	
CRITICAL TO QUALITY CHARACTERISTIC	SOLID MODEL: 50C-1052	

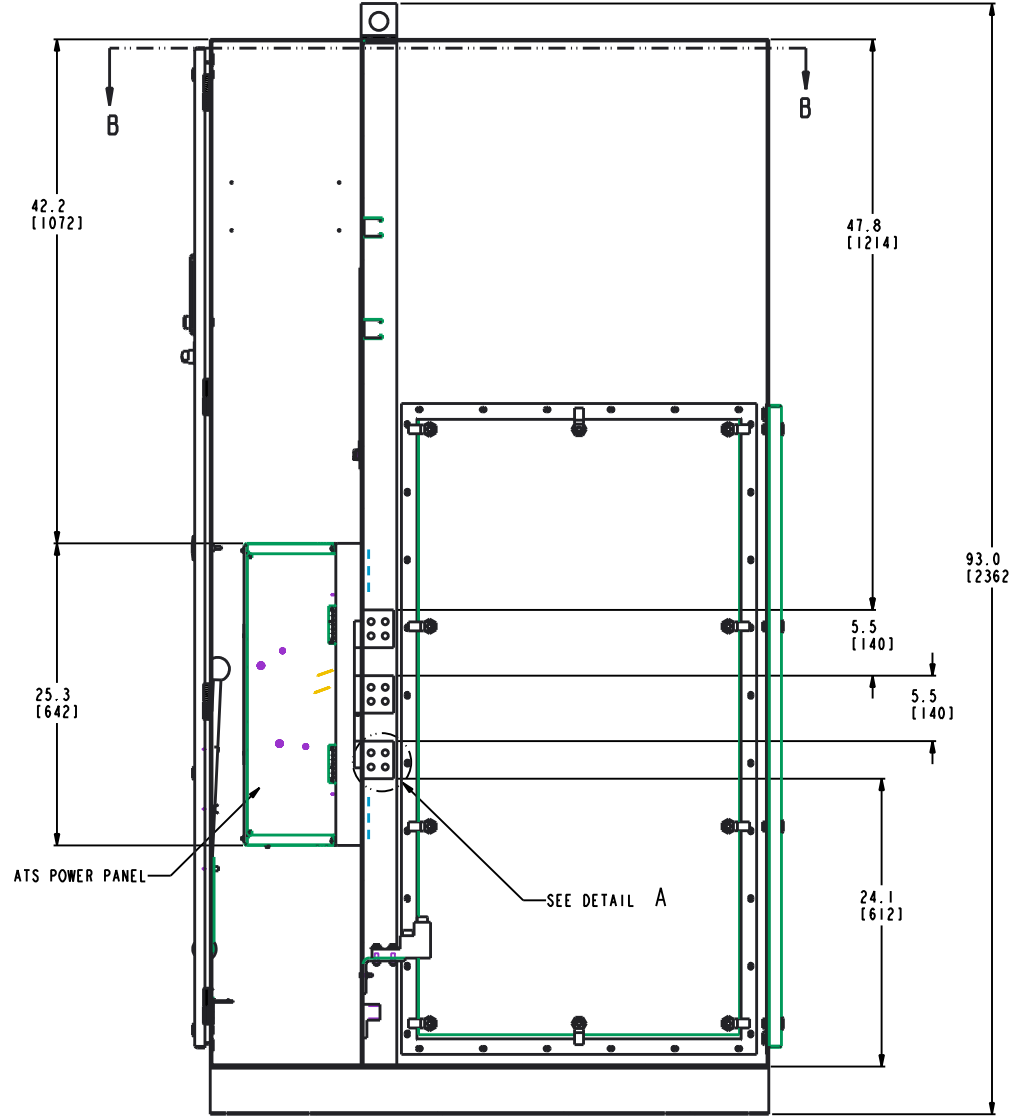
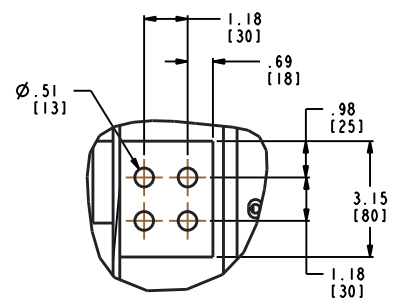
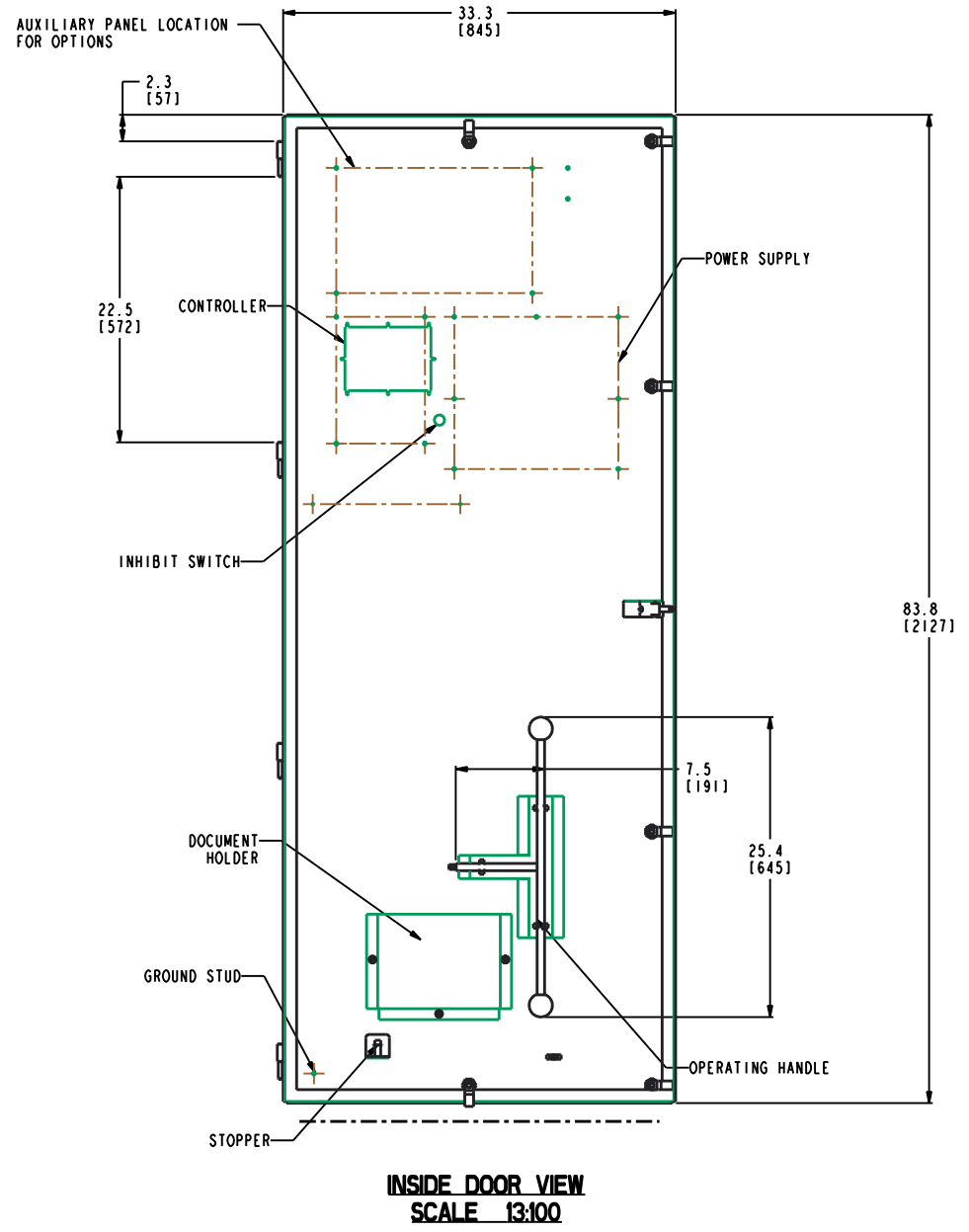
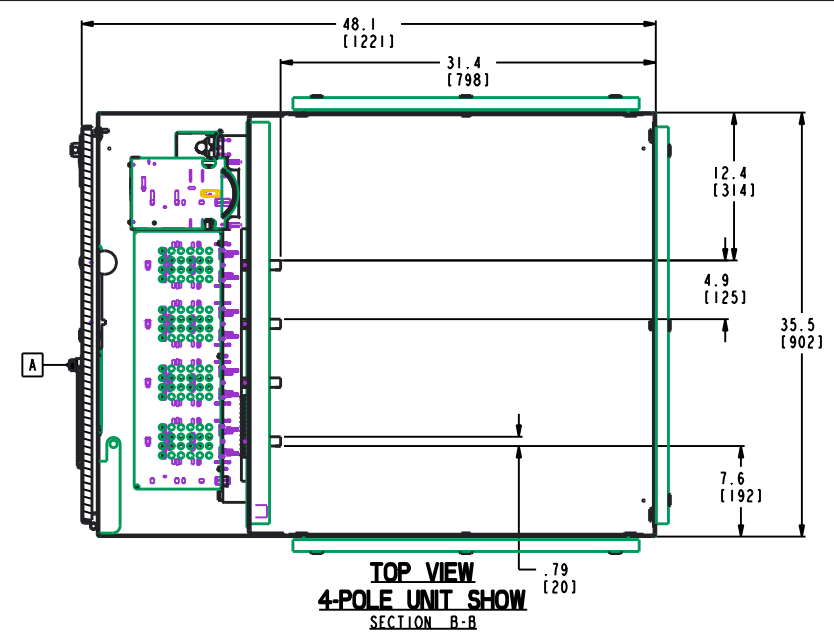
**GE Energy**

TITLE  
**ATS LAYOUT**  
 1600-3000A NEMA-3R,4&12 ENCL  
 FOR ZTGD, ZTSD/CT, ZTED/CT) PRODUCT

SIZE: D DRAWING: 50C-1052 REV: 1  
 SCALE: 1:20 SHEET 2 OF 3

SIZE	DRAWING NO.	REV	SHEET
D	50C-1052	1	3
REVISIONS			
REV.	DESCRIPTION	DATE	APPROVED

**GE PROPRIETARY AND CONFIDENTIAL INFORMATION**  
 This document is the property of General Electric Company ("GE") and contains proprietary information of GE. This document is loaned on the express condition that neither it nor the information contained therein shall be disclosed to others without the express written consent of GE Energy, and that the information shall be used only for the purposes expressly approved by GE Energy. This document shall be returned to GE upon its request. This document may be subject to certain restrictions under U.S. export control laws and regulations.



- NOTE :
1. REFER SHEET(1) FOR MORE DETAILS.
  2. VIEW SHOWS ON THIS SHEET ARE WITHOUT LUGS.
  3. THIS CONFIGURATION CAN BE USED FOR BUS CONNECTION.

FOR ADDITIONAL INFO REFER TO: APPLIED PRACTICES	SIGNATURES	DATE
DIMENSIONS ARE IN INCHES <b>UNLESS OTHERWISE SPECIFIED IN DRAWING</b>	MODEL	
TOLERANCE ON: 1 PL DECIMALS ± 0.1 2 PL DECIMALS ± 0.02 3 PL DECIMALS ± 0.005 ANGLES ± 1.0 FRACTIONS ± FINISH	CHECKED	
CRITICAL TO QUALITY CHARACTERISTIC	ENGRG	
	MFG	
	QUALITY	
	ISSUED	
	DRAWING FILE: 50C-1052	
	SOLID MODEL: 50C-1052	

**GE Energy**

TITLE  
**ATS LAYOUT**  
**1600-3000A NEMA-3R,4&2 ENCL**  
**FOR ZTGD, ZTSD/CT, ZTED/CT) PRODUCT**

SCALE: 1:20

DRAWING NO. 50C-1052 REV 1

SHEET 3 OF 3

