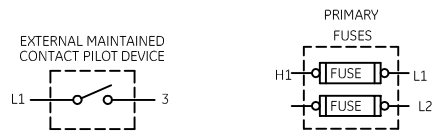
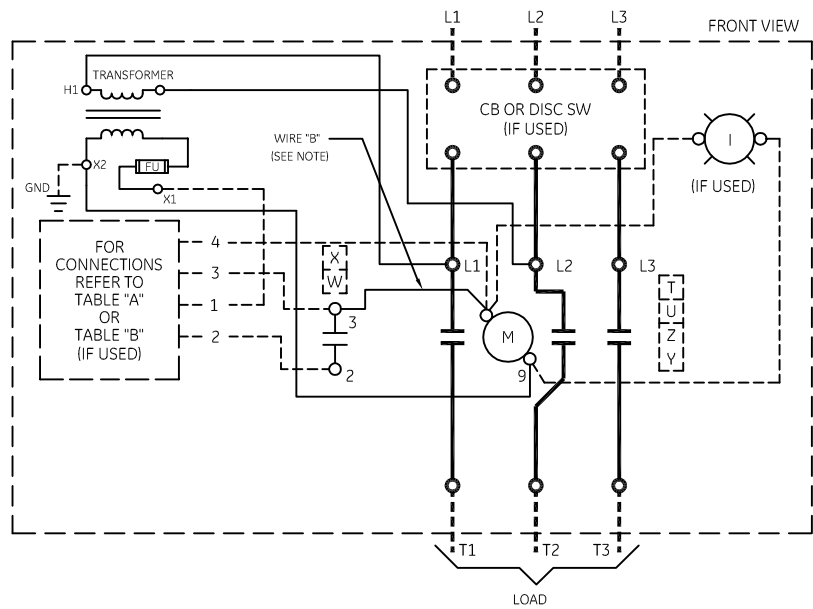


| TABLE A<br>STANDARD PILOT DEVICES     | TABLE B<br>OIL-TIGHT PILOT DEVICES    |
|---------------------------------------|---------------------------------------|
|                                       |                                       |
| <b>PUSHBUTTONS</b><br>                | <b>PUSHBUTTONS</b><br>                |
| (OMIT WIRE "B")                       | (OMIT WIRE "B")                       |
| <b>2 POSITION SELECTOR SWITCH</b><br> | <b>2 POSITION SELECTOR SWITCH</b><br> |
| (OMIT WIRE "B")                       | (OMIT WIRE "B")                       |
| <b>REMOTE DEVICE</b><br>              | <b>REMOTE DEVICE</b><br>              |
| <b>3 POSITION SELECTOR SWITCH</b><br> | <b>3 POSITION SELECTOR SWITCH</b><br> |



**NOMENCLATURE**

M-LINE CONTACTOR  
I-INDICATING LIGHT

ON-OFF-AUTO IS AN ALTERNATE MARKING FOR HAND-OFF-AUTO

USE 75°C COPPER CONDUCTORS ONLY, FOR FIELD WIRING. TORQUE LINE AND LOAD TERMINALS AS MARKED OR AS SHOWN AT RIGHT:

| RATING | TORQUE    |
|--------|-----------|
| 60A    | 50 LB-IN  |
| 100A   | 150 LB-IN |

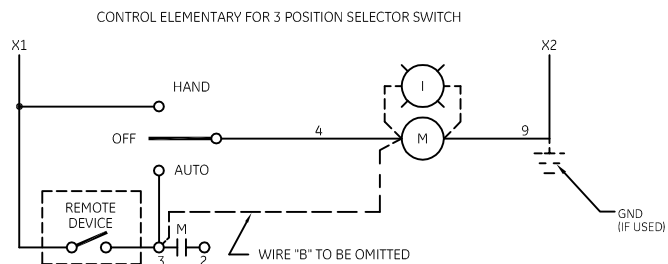
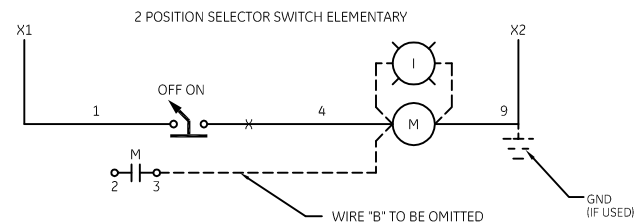
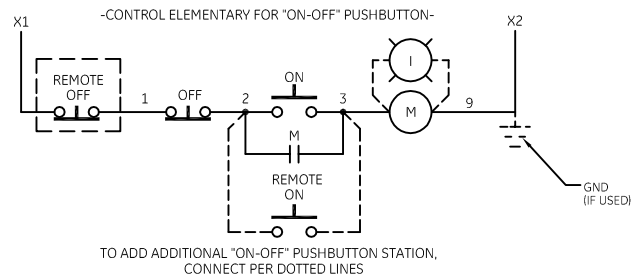
NOTE: ADDITIONAL OVER-CURRENT PROTECTION MAY BE REQUIRED. REFER TO THE NATIONAL ELECTRICAL CODE OR LOCAL ELECTRICAL CODE AS REQUIRED.

FOR EXTRA AUXILIARY CONTACTS - A MAXIMUM OF 5 CONTACTS MAY BE ADDED AT POSITIONS T,U,W,X,Y, & Z.

HOLDING INTERLOCK MAY BE OMITTED ON FORMS WITHOUT PUSHBUTTONS.

**GROUND KIT**

|                  |               |
|------------------|---------------|
| 1/2-IN CONDUIT   | 55-213403G001 |
| 3/4-IN CONDUIT   | 55-213403G002 |
| 1-IN CONDUIT     | 55-213403G003 |
| 1 1/4-IN CONDUIT | 55-213403G004 |
| 1 1/2-IN CONDUIT | 55-213403G005 |
| 2-IN CONDUIT     | 55-213403G006 |
| 2 1/2-IN CONDUIT | 55-213403G007 |
| 3-IN CONDUIT     | 55-213403G008 |



imagination at work

WIRING DIAGRAM  
CR360L LIGHTING CONTACTOR

| AN #    | THIRD ANGLE PROJECTION | SHEET # |
|---------|------------------------|---------|
| 09-9107 |                        | 1 OF 1  |

| DWG NO.   | DATE       | REV |
|-----------|------------|-----|
| 55-194948 | 07/15/2009 | 8   |