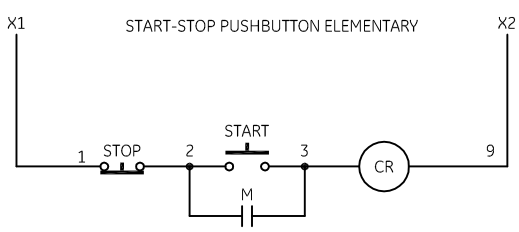
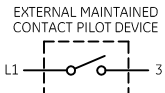
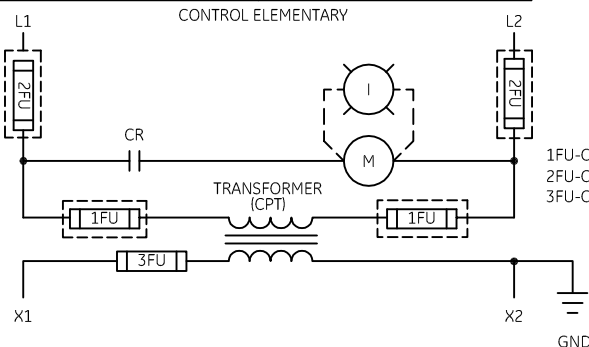
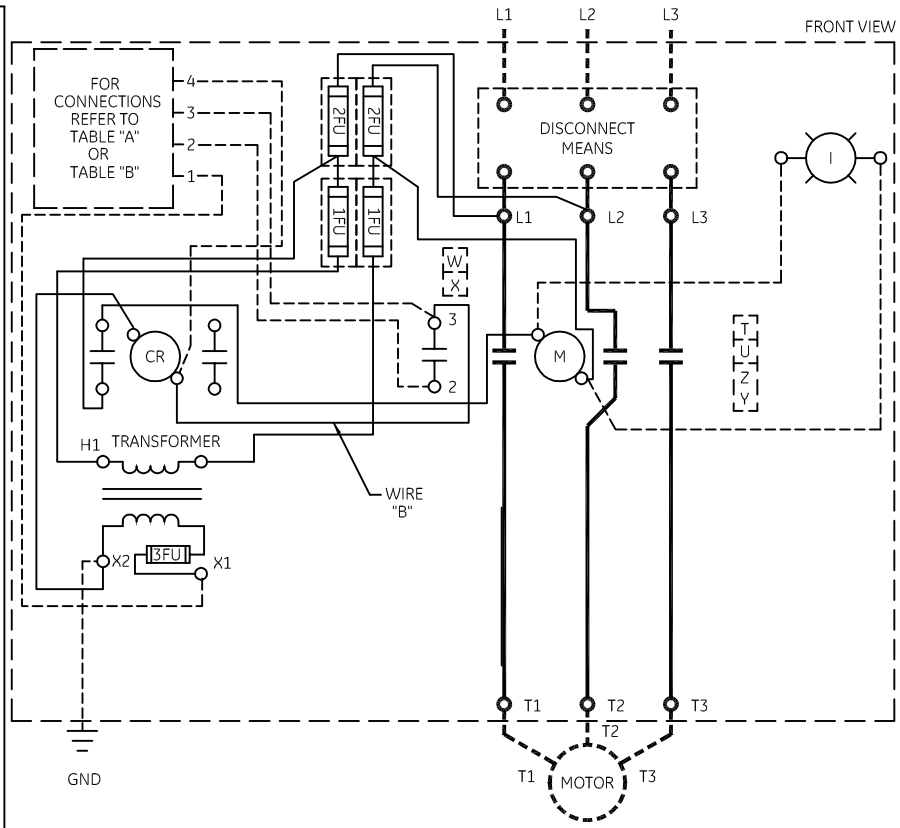


| TABLE A | TABLE B |
|--|--|
| STANDARD PILOT DEVICES | OIL-TIGHT PILOT DEVICES |
| START-STOP | START-STOP |
| PUSHBUTTONS (OMIT WIRE "B") | PUSHBUTTONS (OMIT WIRE "B") |
| 2 POSITION SELECTOR SWITCH (OMIT WIRE "B") | 2 POSITION SELECTOR SWITCH (OMIT WIRE "B") |
| REMOTE DEVICE | REMOTE DEVICE |



NOMENCLATURE

- M-LINE CONTACTOR
- I-INDICATING LIGHT
- CR-CONTROL RELAY

ON-OFF-AUTO IS AN ALTERNATE MARKING FOR HAND-OFF-AUTO

USE 75°C COPPER CONDUCTORS ONLY, FOR FIELD WIRING. TORQUE LINE AND LOAD TERMINALS AS MARKED OR AS SHOWN AT RIGHT:

| | RATING | TORQUE |
|------|-----------|--------|
| 200A | 250 LB-IN | |
| 300A | 300 LB-IN | |

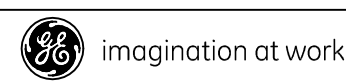
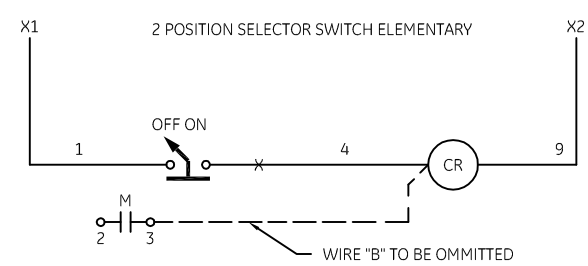
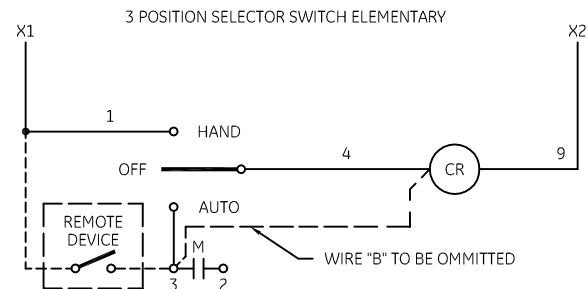
NOTE: ADDITIONAL OVER-CURRENT PROTECTION MAY BE REQUIRED. REFER TO THE NATIONAL ELECTRICAL CODE OR LOCAL ELECTRICAL CODE AS REQUIRED.

FOR EXTRA AUXILIARY CONTACTS - A MAXIMUM OF 5 CONTACTS MAY BE ADDED AT POSITIONS T,U,W,X,Y, & Z.

HOLDING INTERLOCK MAY BE OMITTED ON FORMS WITHOUT PUSHBUTTONS.

GROUND KIT

| | |
|------------------|---------------|
| 1/2-IN CONDUIT | 55-213403G001 |
| 3/4-IN CONDUIT | 55-213403G002 |
| 1-IN CONDUIT | 55-213403G003 |
| 1 1/4-IN CONDUIT | 55-213403G004 |
| 1 1/2-IN CONDUIT | 55-213403G005 |
| 2-IN CONDUIT | 55-213403G006 |
| 2 1/2-IN CONDUIT | 55-213403G007 |
| 3-IN CONDUIT | 55-213403G008 |



**WIRING DIAGRAM
CR360L LIGHTING CONTACTOR**

| AN # | THIRD ANGLE PROJECTION | SHEET # |
|---------|------------------------|---------|
| 09-9107 | | 1 OF 1 |

| DWG NO. | DATE | REV |
|-----------|------------|-----|
| 55-196620 | 07/15/2009 | 9 |