

01  
02  
03  
04  
05  
06  
07  
08  
09  
10  
11  
12  
13  
14  
15  
16  
17  
18  
19  
20  
21  
22  
23  
24  
25  
26  
27  
28  
29  
30  
31  
32  
33  
34  
35  
36  
37  
38

**CONTROL WIRING**

- 22 LINE VOLTAGE CONTROL WIRING  
N50KC41JA #14 BLACK
- 23 CPT VOLTAGE CONTROL WIRING  
N50KC41HC #16 RED
- 24 N50KC41HB #16 WHITE (WIRE 28)
- 25 CPT GROUND WIRING  
55-216961P006 #14 GREEN&YELLOW
- 26 24V DRIVE CONTROL WIRING  
N50KC41HF #16 BLUE
- 27 DRIVE GROUND WIRING  
VARIES BY RATINGS. REFER TO BILL OF MATERIAL
- 28 **POWER WIRING**  
VARIES BY RATINGS. REFER TO BILL OF MATERIAL

30 USE 75°C COPPER CONDUCTORS ONLY, FOR FIELD WIRING. TORQUE LINE AND LOAD TERMINALS AS MARKED ON COMPONENT INSTRUCTION SHEET

- NOTES:
3. RELAY1 PROGRAMMED FOR FAULT INDICATION
  4. RELAY2 PROGRAMMED FOR DRIVE RUN INDICATION
  5. DRIVE INPUT SIGNALS ARE SHOWN FOR 'PNP' (SOURCE) LOGIC.
  6. DRIVE WILL BE PROGRAMMED (PARAMETER C20) TO RUN AT PRESET SPEED (@ 50HZ-JOG FREQUENCY)

- NOTES:
1. DC LINK REACTOR (DCR) IS BUILT INTO THE DRIVE.
  2. - 'POWER ON' LT1 - 'ENABLE' LT7
  - 'DRIVE FAULT' LT3
  - 'DRIVE RUN' LT5

INDICATING LIGHTS ARE INCLUDED IN THE BASIC INDICATING LIGHT GROUP OPTION

**IMPORTANT NOTE:**  
WHEN ANY SHEET OF THIS DRAWING IS REVISED, ALL SHEETS MUST BE UPDATED TO CARRY THE SAME REVISION NUMBER  
THIS WIRING DIAGRAM IS CREATED FOR ALL POSSIBLE CONTROL OPTIONS

**NOMENCLATURE**

INVTR	INVERTER
LT	INDICATING LIGHT
E-STOP	EMERGENCY STOP PUSH BUTTON
CPT	CONTROL POWER TRANSFORMER
FU	CPT PRIMARY FUSE
SFU	CPT SECONDARY FUSE
DSCW	DISCONNECT
CTB1	CONTROL TERMINAL BOARD
RLY	RELAY
SSW	SELECTOR SWITCH
S201&S201	SWITCH (PART OF DRIVE)
FSBLK1	FUSE BLOCK
SPDPOT	SPEED POTENTIOMETER
ETM	ELAPSED TIME METER
SPR	SMOKE PURGE RELAY
LDR	LOAD REACTOR
ACR	AC LINE REACTOR

FOR CSA GROUND KIT, ORDER KIT NUMBER FROM THE FOLLOWING TABLE:

CONDUIT SIZE	KIT NUMBER
1/2-IN CONDUIT	55-2134036001
3/4-IN CONDUIT	55-2134036002
1-IN CONDUIT	55-2134036003
1 1/4-IN CONDUIT	55-2134036004
1 1/2-IN CONDUIT	55-2134036005
2-IN CONDUIT	55-2134036006
2 1/2-IN CONDUIT	55-2134036007

**LEGEND**

CUSTWIRE	
L	CUSTOMER LOW LEVEL WIRING < 50V
CUSTWIRE	
C	CUSTOMER HIGH LEVEL WIRING > 50V THRU 125V
CUSTWIRE	
P	CUSTOMER POWER WIRING > 125V
□	DOOR MOUNTED COMPONENT
⊠	REMOTE MOUNTED COMPONENT
△	FACTORY WIRED JUMPER

REVISIONS			UNLESS OTHERWISE SPECIFIED	SIGNATURES	DATE
REV	DESCRIPTION	DATE	DIMENSIONS ARE IN INCHES TOLERANCES ON: 2 PL DECIMALS ± 3 PL DECIMALS ± ANGLES ± FRACTIONS ±	DRAWN ANANTVJAY	12/12/08
10	AN 11-2005	05/18/11		CHECKED	
				ENGRG	
				ISSUED	10/26/10

**GE Industrial Systems**

LOCATION: MONTERREY, MX

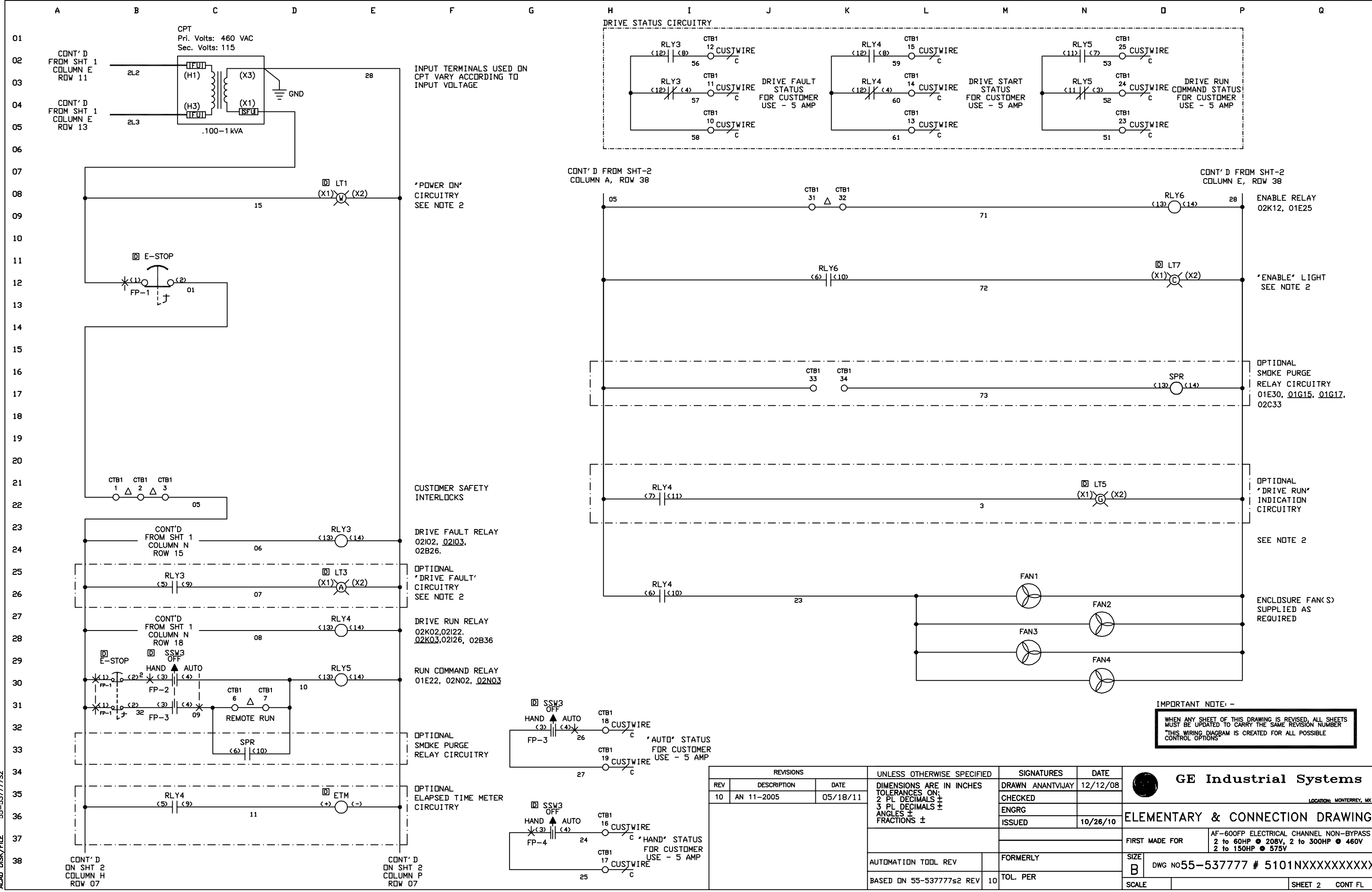
**ELEMENTARY & CONNECTION DRAWING**

FIRST MADE FOR	AF-600FP ELECTRICAL CHANNEL NON-BYPASS 2 to 60HP @ 208V, 2 to 300HP @ 460V 2 to 150HP @ 575V
AUTOMATION TOOL REV	FORMERLY
BASED ON 55-537777s1 REV 10	TOL. PER

SIZE B DWG No 55-537777 # 5101NXXXXXXXXXX

SCALE SHEET 1 CONT 2

ACAD\_DISK/FILE 55-537777S1



REVISIONS			UNLESS OTHERWISE SPECIFIED	SIGNATURES	DATE
REV	DESCRIPTION	DATE	DIMENSIONS ARE IN INCHES TOLERANCES ON: 2 PL DECIMALS ± 3 PL DECIMALS ± ANGLES ± FRACTIONS ±	DRAWN ANANTVJAY	12/12/08
10	AN 11-2005	05/18/11		CHECKED	
				ENGRG	
				ISSUED	10/26/10
AUTOMATION TOOL REV			FORMERLY	SIZE B	
BASED ON 55-537777s2 REV 10			TOL. PER	DWG NO 55-537777 # 5101NXXXXXXXXXX	
			SCALE	SHEET 2 CONT FL	

**GE Industrial Systems**  
 LOCATION: MONTERREY, MX  
**ELEMENTARY & CONNECTION DRAWING**  
 FIRST MADE FOR AF-600FP ELECTRICAL CHANNEL NON-BYPASS  
 2 to 60HP • 208V, 2 to 300HP • 460V  
 2 to 150HP • 575V

ACAD\_DISK\_FILE 55-537777S2