

21 CONTROL WIRING

22 LINE VOLTAGE CONTROL WIRING
N50K41JA #14 BLACK

23 CPT VOLTAGE CONTROL WIRING
N50K41HC #16 RED

24 N50K41HB #16 WHITE (WIRE 28)

25 CPT GROUND WIRING
55-216961P006 #14 GREEN&YELLOW

26 24V DRIVE CONTROL WIRING
N50K41HF #16 BLUE

27 DRIVE GROUND WIRING
VARIES BY RATINGS. REFER TO BILL OF MATERIAL

28 POWER WIRING
VARIES BY RATINGS. REFER TO BILL OF MATERIAL

29

30 USE 75°C COPPER CONDUCTORS ONLY, FOR FIELD WIRING. TORQUE LINE AND LOAD TERMINALS AS MARKED ON COMPONENT INSTRUCTION SHEET

31

32

33 NOTES:

5. RELAY1 PROGRAMMED FOR FAULT INDICATION

6. RELAY2 PROGRAMMED FOR DRIVE RUN INDICATION

7. DRIVE INPUT SIGNALS ARE SHOWN FOR 'PNP' (SOURCE) LOGIC.

8. DRIVE WILL BE PROGRAMMED (PARAMETER C20) TO RUN AT PRESET SPEED (@ 50HZ-JOG FREQUENCY)

9. MINIMAL TIME DELAY OF 10 SECONDS IS NECESSARY PRIOR TO CLOSING THE REMOTE BYPASS CONTACTS, REFER INSTRUCTION SHEETS FOR MORE DETAIL.

34

35

36

37

38

NOTES:

1. DRIVE OUTPUT (M2) AND BYPASS (M3) CONTACTORS ARE MECHANICALLY INTERLOCKED.

2. DC LINK REACTOR (DCR) IS BUILT INTO THE DRIVE.

3. DB RESISTORS NOT INCLUDED, DB CHOPPER SIZED FOR 10% DUTY CYCLE.

4. - *POWER ON* LT1 - *NORMAL* LT2
- *DRIVE FAULT* LT3 - *BYPASS RUN* LT4
- *MOTOR OVERLOAD* LT5 - *MOTOR OVERLOAD* LT6
- *ENABLE* LT7

INDICATING LIGHTS ARE INCLUDED IN THE BASIC INDICATING LIGHT GROUP OPTION

IMPORTANT NOTE: -
WHEN ANY SHEET OF THIS DRAWING IS REVISED, ALL SHEETS MUST BE UPDATED TO CARRY THE SAME REVISION NUMBER.

- NOMENCLATURE
- M2 LOAD CONTACTOR
 - M3 BYPASS CONTACTOR
 - INVTR INVERTER
 - LT INDICATING LIGHT
 - E-STOP EMERGENCY STOP PUSH BUTTON
 - CPT CONTROL POWER TRANSFORMER
 - FU CPT PRIMARY FUSE
 - SFU CPT SECONDARY FUSE
 - DSCW DISCONNECT
 - CTB1 CONTROL TERMINAL BOARD
 - OL OVERLOAD RELAY
 - RLY RELAY
 - SSW SELECTOR SWITCH
 - S201&S201 SWITCH (PART OF DRIVE)
 - FSBLK1 FUSE BLOCK
 - SPDPOT SPEED POTENTIOMETER
 - ETM ELAPSED TIME METER
 - C1 CONTACTOR FOR CAPACITOR PANEL
 - LDR LOAD REACTOR
 - ACR AC LINE REACTOR
 - C1TMR TIME DELAY RELAY FOR CAPACITOR PANEL
 - DB DYNAMIC BREAK CHOPPER
 - PB PUSH BUTTON
 - PTB POWER TERMINAL BOARD

FOR CSA GROUND KIT, ORDER KIT NUMBER FROM THE FOLLOWING TABLE:

CONDUIT SIZE	KIT NUMBER
1/2-IN CONDUIT	55-2134036001
3/4-IN CONDUIT	55-2134036002
1-IN CONDUIT	55-2134036003
1 1/4-IN CONDUIT	55-2134036004
1 1/2-IN CONDUIT	55-2134036005
2-IN CONDUIT	55-2134036006
2 1/2-IN CONDUIT	55-2134036007

- LEGEND
- CUSTWIRE L CUSTOMER LOW LEVEL WIRING < 50V
 - CUSTWIRE C CUSTOMER HIGH LEVEL WIRING > 50V THRU 125V
 - CUSTWIRE P CUSTOMER POWER WIRING > 125V
 - DOOR MOUNTED COMPONENT
 - REMOTE MOUNTED COMPONENT
 - △ FACTORY WIRED JUMPER

REVISIONS

REV	DESCRIPTION	DATE
7	AN 11-2005	05/18/11

UNLESS OTHERWISE SPECIFIED	SIGNATURES	DATE
DIMENSIONS ARE IN INCHES TOLERANCES ON: 2 PL DECIMALS ± 3 PL DECIMALS ± ANGLES ± FRACTIONS ±	DRAWN ANANTVIJAY	06/01/09
	CHECKED	
	ENGRG	
	ISSUED	10/26/10

GE Industrial Systems

LOCATION: MONTERREY, MX

ELEMENTARY & CONNECTION DRAWING

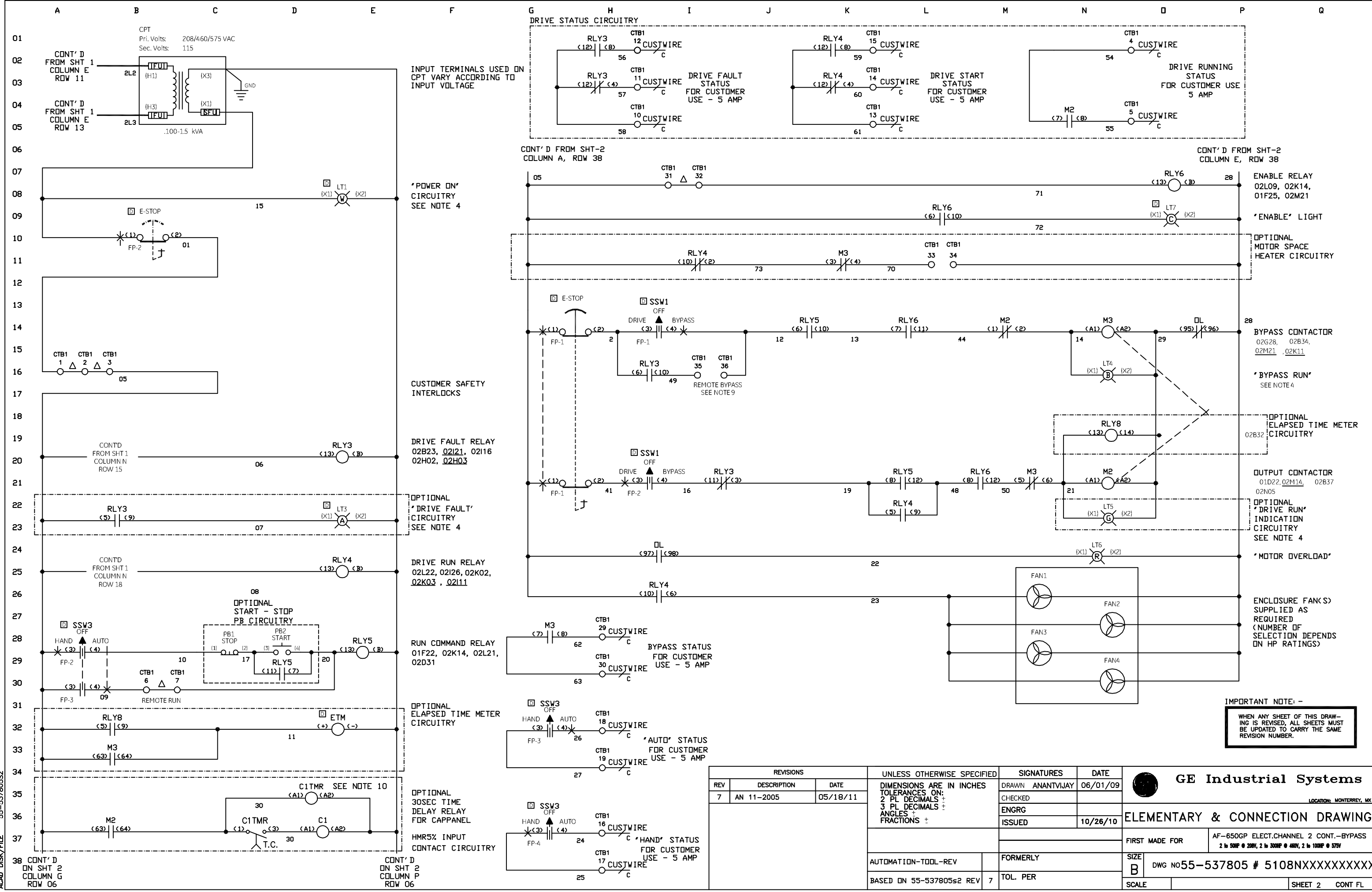
FIRST MADE FOR AF-650GP ELECT.CHANNEL 2 CONT.-BYPASS
2 to 50HP @ 208V, 2 to 300HP @ 460V, 2 to 100HP @ 575HP

SIZE B DWG No55-537805 # 5108NXXXXXXXXXX

AUTOMATION TOOL REV FORMERLY

BASED ON 55-537805s1 REV 7 TOL. PER

SCALE SHEET 1 CONT 2



REVISIONS			UNLESS OTHERWISE SPECIFIED	SIGNATURES	DATE
REV	DESCRIPTION	DATE	DIMENSIONS ARE IN INCHES TOLERANCES ON: 2 PL DECIMALS ± 3 PL DECIMALS ± ANGLES ± FRACTIONS ±	DRAWN ANANTVJAY	06/01/09
7	AN 11-2005	05/18/11		CHECKED	
				ENGRG	
				ISSUED	10/26/10
AUTOMATION-TOOL-REV			FORMERLY	GE Industrial Systems	
BASED ON 55-537805s2 REV 7			TOL. PER	ELEMENTARY & CONNECTION DRAWING	
SCALE			FIRST MADE FOR AF-650GP ELECT.CHANNEL 2 CONT.-BYPASS 2 to 50HP @ 200V, 2 to 300HP @ 460V, 2 to 100HP @ 575V		
			SHEET 2 CONT FL		

ACAD_DISK_FILE 55-537805S2