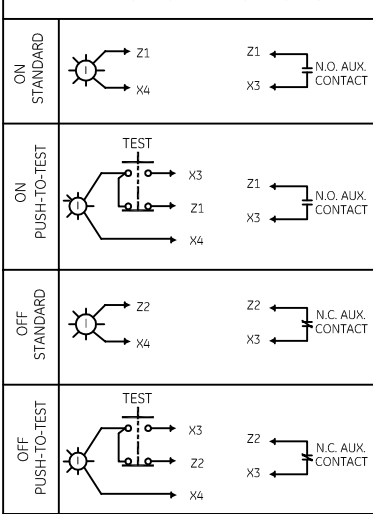


* TABLE : OPTIONAL PILOT LIGHTS



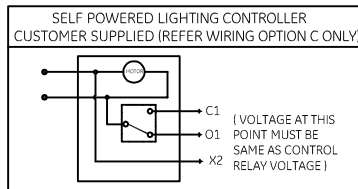
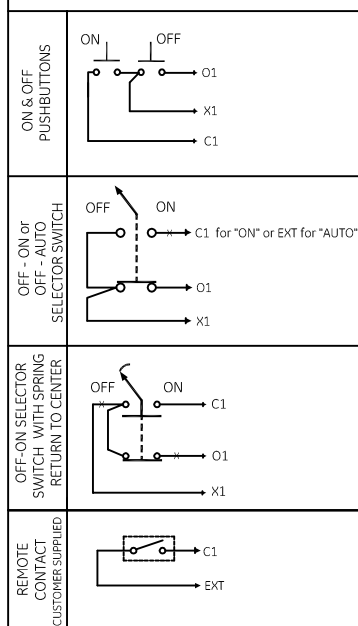
NOTE:
ADDITIONAL OVER-CURRENT PROTECTION FOR CONTROL CIRCUIT MAY BE REQUIRED.
REFER TO THE NATIONAL ELECTRIC CODE OR LOCAL ELECTRIC CODE AS REQUIRED.

WHEN COIL AND LINE VOLTAGES ARE DIFFERENT REMOVE WIRE "A" & "B".

ORDER KIT NUMBER FROM THE FOLLOWING TABLE

CONDUIT SIZE	KIT NUMBER
1/2-IN CONDUIT	55-213403G001
3/4-IN CONDUIT	55-213403G002
1-IN CONDUIT	55-213403G003
1 1/4-IN CONDUIT	55-213403G004
1 1/2-IN CONDUIT	55-213403G005
2-IN CONDUIT	55-213403G006
2 1/2-IN CONDUIT	55-213403G007
3-IN CONDUIT	55-213403G008

* TABLE : OPTIONAL PILOT DEVICES FOR 3 WIRE CONTROL



NOMENCLATURE

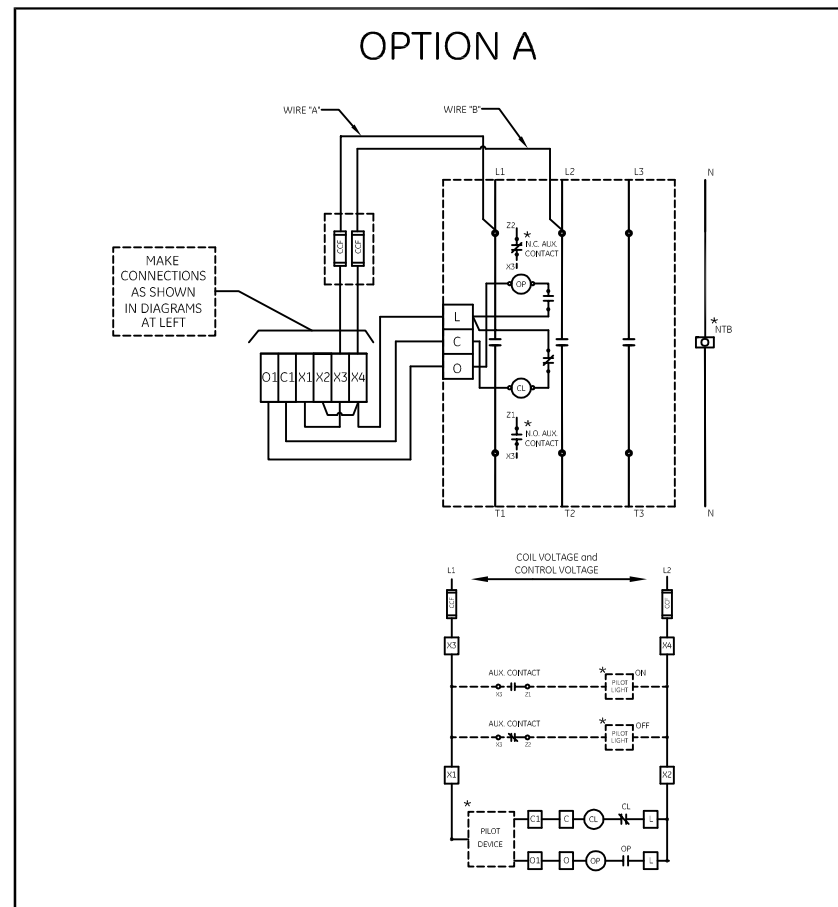
- OP - OPENING COIL
- CL - CLOSING COIL
- CCF - CONTROL CIRCUIT FUSE
- CPT - CONTROL POWER TRANSFORMER
- PFU - PRIMARY FUSE
- NTB - NEUTRAL TERMINAL BOARD
- CR - CONTROL RELAY
- * - IF USED

CR160MC MECHANICALLY HELD CONTACTOR WIRING OPTIONS A, B OR C FOR 3-WIRE CONTROL.

OPTION A : COIL VOLTAGE IS SAME AS CONTROL VOLTAGE. (REFER SHEET 1 OF 2)

OPTION B : COIL VOLTAGE IS DIFFERENT THAN CONTROL VOLTAGE. (REFER SHEET 2 OF 2)

OPTION C : COIL VOLTAGE IS DIFFERENT THAN CONTROL VOLTAGE WITH CPT (REFER SHEET 2 OF 2)



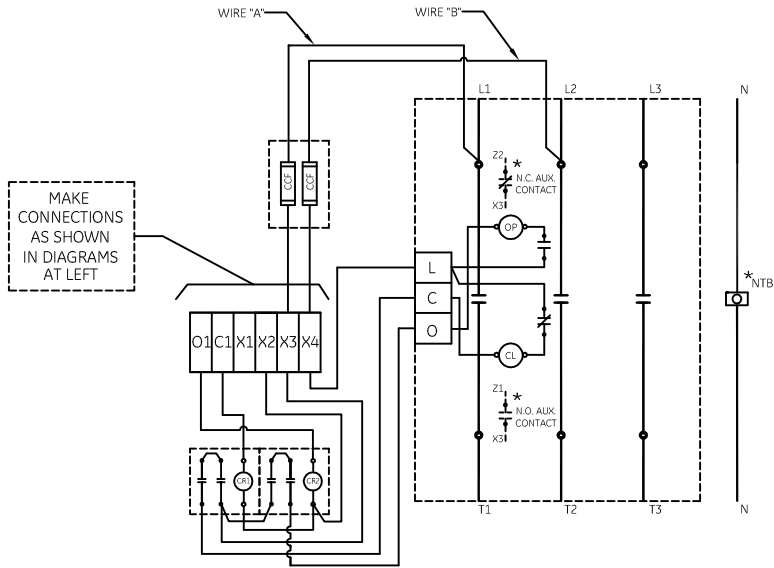
	RATING	WIRE RANGE AWG or kcmil	CONTACTOR TORQUE LB-IN	NEUTRAL TB TORQUE LB-IN
USE 75°C, COPPER CONDUCTORS ONLY FOR FIELD WIRING. TORQUE CONTACTOR AND NEUTRAL TERMINAL BOARD AS SHOWN AT RIGHT:	30A	#14 - #10	35	20
		#8	40	25
		#6	45	35
	60 - 100A	#14 - #10	35	50
#8		40	50	
#6 - #4		45	120	
150A	#6 - #4	50	120	
200-225A	#6 - #2	275	275	
	#1/0	375	275	

imagination at work

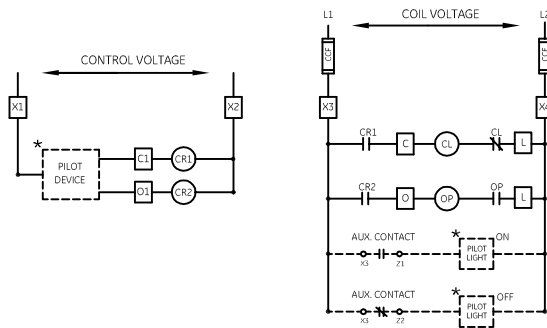
WIRING DIAGRAM
160MC LIGHTING CONTACTOR

AN #	THIRD ANGLE PROJECTION	SHEET #	DWG NO.	DATE	REV
10-9104		1 OF 2	55-686607	04/18/2010	1

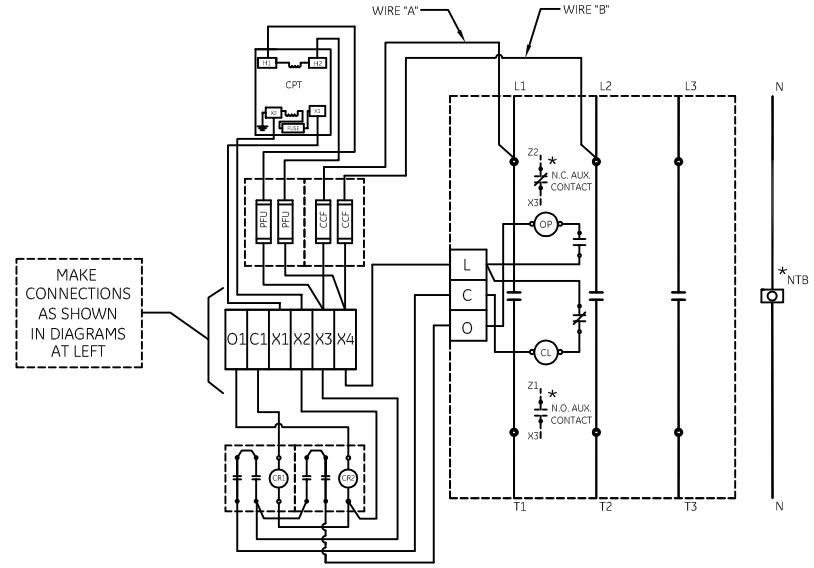
OPTION B



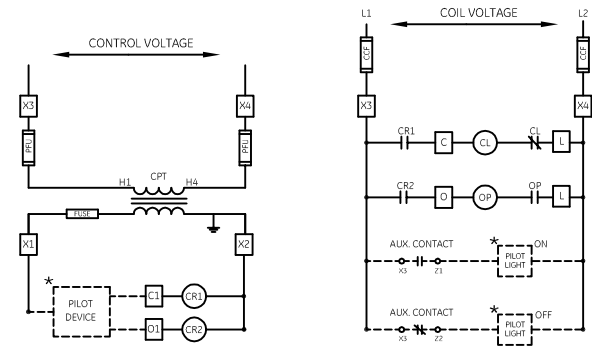
MAKE CONNECTIONS AS SHOWN IN DIAGRAMS AT LEFT



OPTION C



MAKE CONNECTIONS AS SHOWN IN DIAGRAMS AT LEFT



imagination at work

WIRING DIAGRAM
160MC LIGHTING CONTACTOR

AN #	THIRD ANGLE PROJECTION	SHEET #
10-9104		2 OF 2

DWG NO.	DATE	REV
55-686607	04/18/2010	1