

- NOMENCLATURE**
- M2 DRIVE-1 OUTPUT CONTACTOR
  - M3 DRIVE-2 OUTPUT CONTACTOR
  - INVTR INVERTER
  - LT INDICATING LIGHT
  - E-STOP EMERGENCY STOP PUSH BUTTON
  - CPT CONTROL POWER TRANSFORMER
  - FU CPT PRIMARY FUSE
  - SFU CPT SECONDARY FUSE
  - CTB1 CONTROL TERMINAL BOARD
  - DSCW DISCONNECT
  - REL RELAY
  - SSW SELECTOR SWITCH
  - S201&S201 SWITCH (PART OF DRIVE)
  - FSBLK FUSE BLOCK
  - ACR AC LINE REACTOR
  - PDB POWER DISTRIBUTION BLOCK
  - PTB POWER TERMINAL BOARD

- CONTROL WIRING**
- LINE VOLTAGE CONTROL WIRING N50KC41JA #14 BLACK
  - CPT VOLTAGE CONTROL WIRING N50KC41HC #18 RED
  - N50KC41HB #18 WHITE (WIRE 40)
  - CPT GROUND WIRING 55-216961P006 #14 GREEN&YELLOW
  - 24V DRIVE CONTROL WIRING N50KC41HF #16 BLUE
  - DRIVE GROUND WIRING VARIES BY RATINGS. REFER TO BILL OF MATERIAL
- POWER WIRING**
- VARIES BY RATINGS. REFER TO BILL OF MATERIAL

- NOTES:**
1. DRIVE-1 (M2) AND DRIVE-2 (M3) OUTPUT CONTACTORS ARE MECHANICALLY INTERLOCKED.
  2. DC LINK REACTOR (DOR) IS BUILT INTO THE DRIVE.
  4. - "POWER ON" LT1 - "DRIVE-1 FAULT" LT3 - "DRIVE-2 FAULT" LT6 - "DRIVE-1 RUN" LTS - "DRIVE-2 RUN" LT4
- INDICATING LIGHTS ARE INCLUDED IN THE BASIC INDICATING LIGHT GROUP OPTION
5. RELAY1 PROGRAMMED FOR FAULT INDICATION IN INVTR-1 & 2
  6. RELAY2 PROGRAMMED FOR DRIVE RUN INDICATION IN INVTR-1 & 2
  7. DRIVE INPUT SIGNALS ARE SHOWN FOR 'PMP' (SOURCE) LOGIC.
  9. MINIMAL TIME DELAY OF 10 SECONDS IS NECESSARY PRIOR TO CHANGING THE MODE FROM 'DRIVE-1' TO 'DRIVE-2' VICE VERSA

USE 75°C COPPER CONDUCTORS ONLY, FOR FIELD WIRING. TORQUE LINE AND LOAD TERMINALS AS MARKED ON COMPONENT INSTRUCTION SHEET

**LEGEND**

- CUSTOMER LOW LEVEL WIRING < 50V
- CUSTOMER HIGH LEVEL WIRING > 50V THRU 125V
- CUSTOMER POWER WIRING > 125V
- DOOR MOUNTED COMPONENT
- REMOTE MOUNTED COMPONENT
- FACTORY WIRED JUMPER

**IMPORTANT NOTE -**

WHEN ANY SHEET OF THIS DRAWING IS REVISED, ALL SHEETS MUST BE UPDATED TO CARRY THE SAME REVISION NUMBER.

FOR GSA GROUND MT, ORDER KIT NUMBER FROM THE FOLLOWING TABLE:

CONDUIT SIZE	KIT NUMBER
1/2" IN CONDUIT	55-313403001
3/4" IN CONDUIT	55-313403002
1" IN CONDUIT	55-313403003
1 1/4" IN CONDUIT	55-313403004
1 1/2" IN CONDUIT	55-313403005
2" IN CONDUIT	55-313403006
2 1/2" IN CONDUIT	55-313403007

REVISIONS			UNLESS OTHERWISE SPECIFIED		SIGNATURES		DATE
REV	DESCRIPTION	DATE	DIMENSIONS ARE IN INCHES TOLERANCES ON: 2 PL DECIMALS ± 3 PL DECIMALS ± FRACTIONS ±		DRAWN ANANTV/JAY	OB/24/10	
1	AN 10-2094	08/30/10			CHECKED		
2	AN 10-2098	09/09/10			ENGRG		
3	AN 10-2114	09/23/10			ISSUED	08/24/10	
4	AN 10-2117	10/20/10					
5	AN 11-1018	09/27/11					

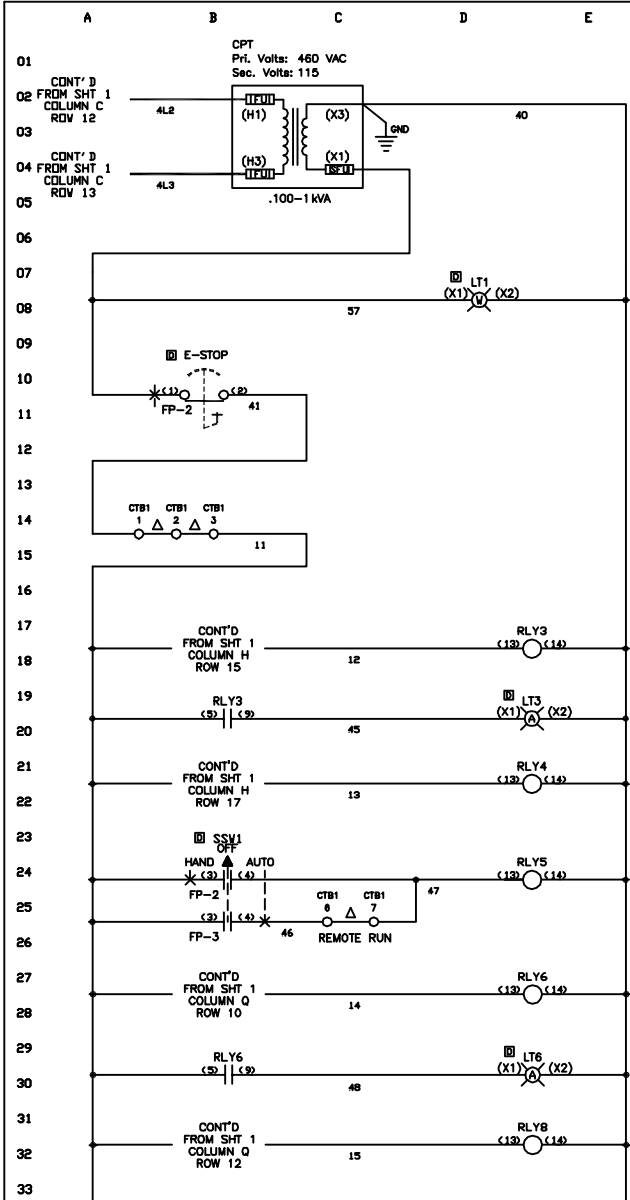
**GE Industrial Systems**

LOCATIONS: WATKINS, MI

**ELEMENTARY & CONNECTION DRAWING**

FORMERLY	SIZE C	DWG NO 55-686669
TOL. PER	SCALE	SHEET 1 CONT 2

ACAD DSK/FILE 55-686669S1



INPUT TERMINALS USED ON CPT VARY ACCORDING TO INPUT VOLTAGE

\* POWER ON\* CIRCUITRY SEE NOTE 4

CUSTOMER SAFETY INTERLOCKS

DRIVE-1 FAULT RELAY  
02B20, 02K1B  
02H02, 02H04

\* DRIVE-1 FAULT\* CIRCUITRY SEE NOTE 4

\* DRIVE-1 RUN RELAY\*  
02M20, 02I23  
02J02, 02J04

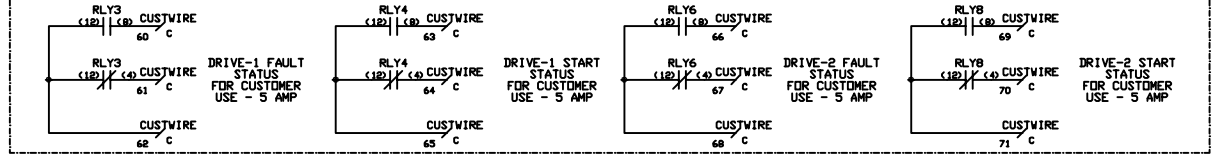
DRIVE RUN COMMAND RELAY  
01D20, 02M12  
01M15, 02M18

\* DRIVE-2 FAULT RELAY\*  
02B30, 02K1  
02M02, 02M04

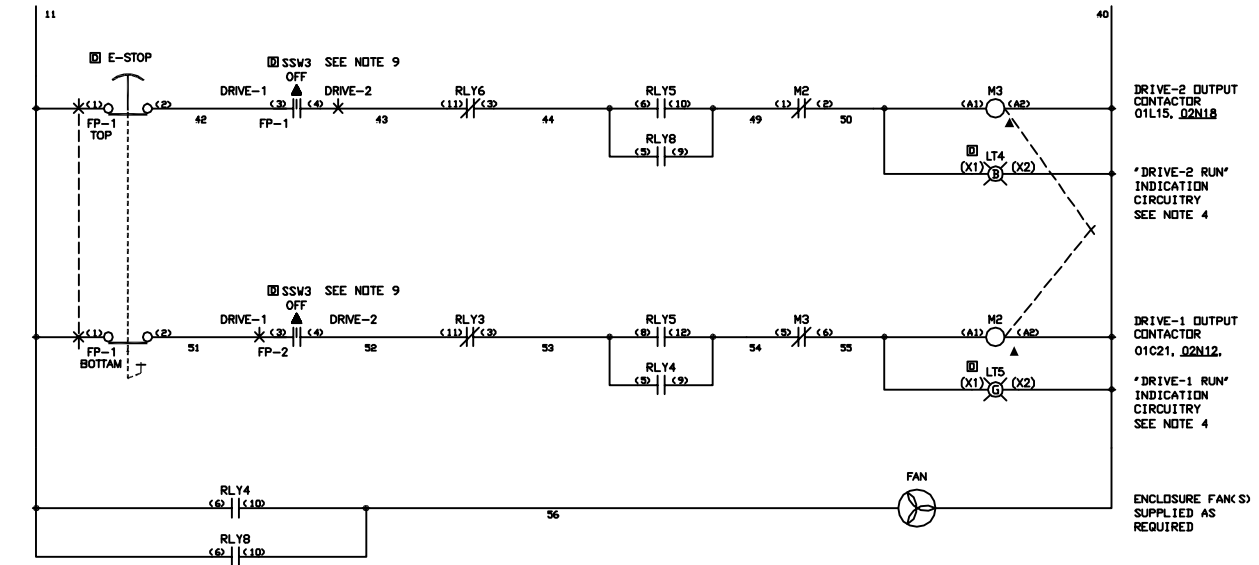
\* DRIVE-2 FAULT\* CIRCUITRY SEE NOTE 4

\* DRIVE-2 RUN RELAY\*  
02M13, 02I25  
02O02, 02O04

SPARE TERMINALS AVAILABLE FOR DRIVE RUN & DRIVE FAULT STATUS (No factory wiring)



CONT'D FROM SHT-2 COLUMN A, ROW 34



IMPORTANT NOTE: -  
WHEN ANY SHEET OF THIS DRAWING IS REVISED, ALL SHEETS MUST BE UPDATED TO CARRY THE SAME REVISION NUMBER.

REVISIONS			UNLESS OTHERWISE SPECIFIED	SIGNATURES	DATE
REV	DESCRIPTION	DATE	DIMENSIONS ARE IN INCHES TOLERANCES ON: 2 PL DECIMALS ± 3 PL DECIMALS ± ANGLES ± FRACTIONS ±	DRAWN ANANTVJAY	08/24/10
1	AN 10-2094	08/30/10		CHECKED	
2	AN 10-2098	09/09/10		ENGRG	
3	AN 10-2114	09/23/10		ISSUED	08/24/10
4	AN 10-2117	10/20/10			
5	AN 11-1018	09/27/11			

<b>GE Industrial Systems</b> <small>LOCATIONS: CHINA, UK</small>		<b>ELEMENTARY &amp; CONNECTION DRAWING</b>	
		FIRST MADE FOR	AF 600 REDUNDANT DRIVE PANEL 15HP TO 125HP @ 460 VAC
FORMERLY	SIZE C	DWG NO	55-686669
TOL. PER	SCALE	SHEET 2	CONT FL

ACAD DWG/FILE 55-68666952