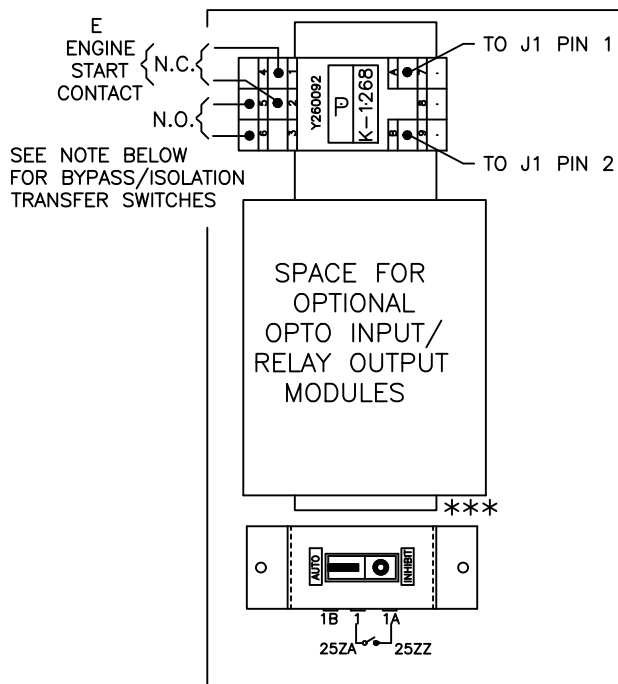




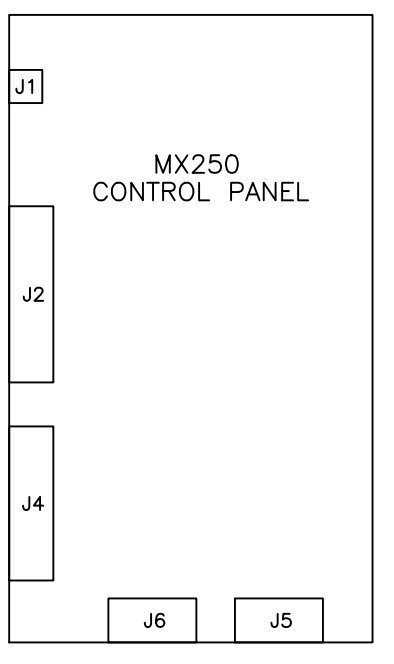
REVISIONS

REV.	DESCRIPTION	DATE	APPROVED
2	C077097 UPDATED REBRANDING	09/24/19	AR MAS

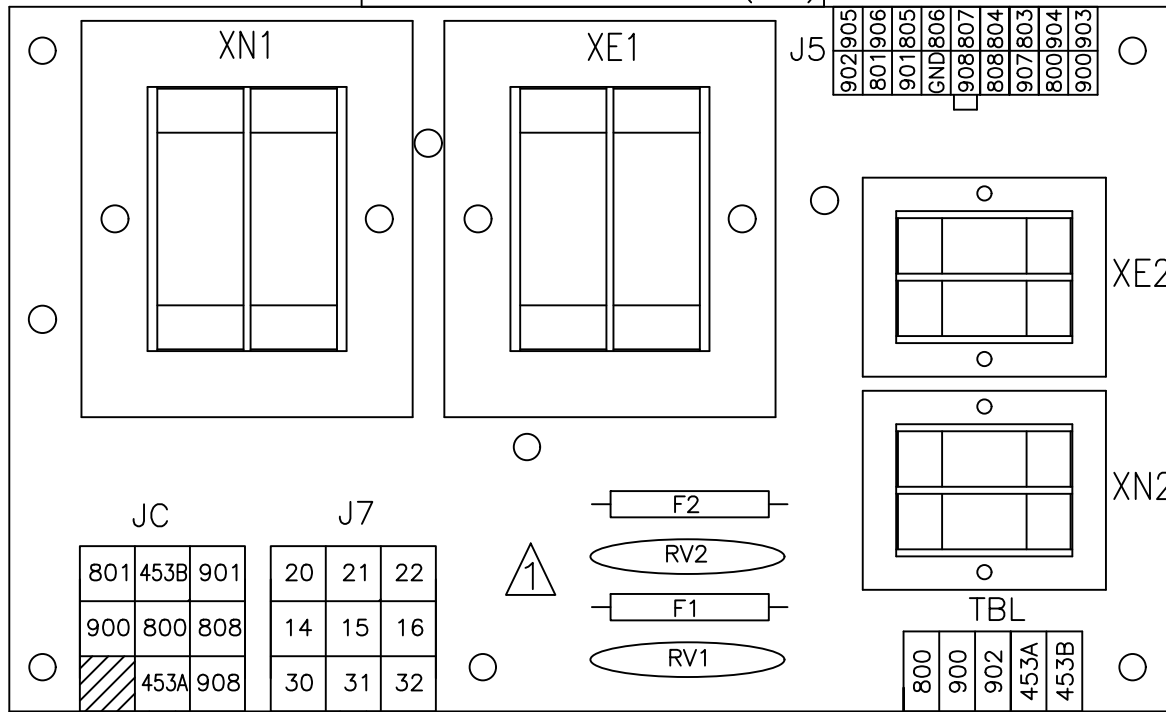
REVIEW VIEW OF CONTROLLER



PILOT DEVICES

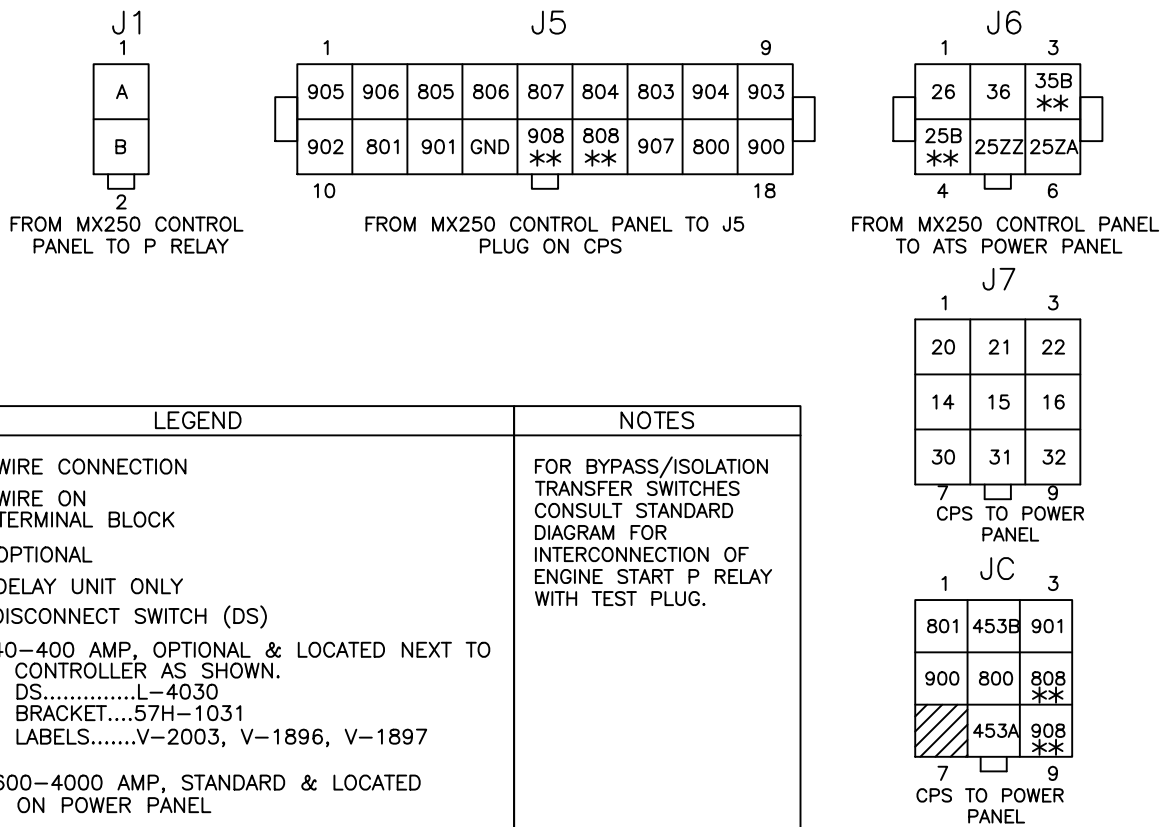


CONTROLS POWER SUPPLY (CPS)

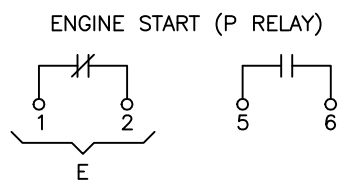


NOTE: J2, J4 TERMINALS FOR ADDED OPTIONAL ACCESSORIES ONLY.

INTERCONNECT PLUGS



CUSTOMER CONNECTIONS



RELAY	CONTACT	RATING
P	E	10 AMP @ 240 VAC 10 AMP @ 28 VDC
	A3, A4	15 AMP @ 125, 250 VAC
OUTPUT MODULES	E	10 AMP @ 250 VAC 10 AMP @ 30 VDC

LEGEND	NOTES
<ul style="list-style-type: none"> ● WIRE CONNECTION ○ WIRE ON TERMINAL BLOCK * OPTIONAL ** DELAY UNIT ONLY *** DISCONNECT SWITCH (DS) 	<p>FOR BYPASS/ISOLATION TRANSFER SWITCHES CONSULT STANDARD DIAGRAM FOR INTERCONNECTION OF ENGINE START P RELAY WITH TEST PLUG.</p> <p>40-400 AMP, OPTIONAL & LOCATED NEXT TO CONTROLLER AS SHOWN. DS.....L-4030 BRACKET.....57H-1031 LABELS.....V-2003, V-1896, V-1897</p> <p>600-4000 AMP, STANDARD & LOCATED ON POWER PANEL</p>

<p>ABB PROPRIETARY AND CONFIDENTIAL INFORMATION</p> <p>The information contained in the document has to be kept strictly confidential. Any unauthorized use, reproduction, distribution or disclosure to third parties is strictly forbidden. ABB reserves all rights regarding Intellectual Property Rights. Copyright 2018 ABB. All rights reserved.</p> <p>THIRD ANGLE PROJECTION</p>	<p>FOR ADDITIONAL INFO REFER TO APPLIED PRACTICES</p> <p>UNLESS OTHERWISE SPECIFIED DIMENSIONS ARE IN INCHES</p> <p>TOLERANCES ON:</p> <p>2 PL. DECIMALS ± .020</p> <p>3 PL. DECIMALS ± .005</p> <p>ANGLES ± 1°</p> <p>FRACTIONS ± 1/64</p> <p>FINISH ✓</p>	<p>SIGNATURES</p> <p>MODEL GG</p> <p>DATE 6/22/04</p> <p>CHECKED</p> <p>ENGRG FS</p> <p>MFG</p> <p>QUALITY</p> <p>ISSUED</p>	<p>TITLE</p> <p>MX250 INSIDE DOOR VIEW</p> <p>FIRST MADE FOR: ZTS(D)L</p> <p>SIZE B</p> <p>CAGE CODE</p> <p>DWG NO 71A-0500</p>	
	<p>AutoCad Generated</p>	<p>DRAWING FILE: 71a-0500.dwg</p> <p>MODEL / ASSEMBLY FILE:</p>	<p># CTQs</p> <p>⊖ CRITICAL TO QUALITY CHARACTERISTIC</p>	<p>SCALE: NA</p>
				<p>SHEET 1 OF 1</p>

