



Transformer



1M0000000

Catalog Number

9T14A1004G34

Type QL

75.0 KVA 60 HZ 3 PH 2.9 % IMP

40 C AMB. 115 C RISE 220 C SYSTEM IS-19C
Note: Design is based on 112.5KVA & 150C Rise 4.1% Imp.

PRIMARY (H) 480 VOLTS (LINE-LINE)
SECONDARY (X) 208 VOLTS (LINE-LINE)
120 VOLTS (LINE-NEUTRAL)

ELECTROSTATIC GROUND SHIELD IN EACH PHASE

ENCLOSURE TYPE 2 (IP20) OR RAINPROOF TYPE 3R (IP22) WHEN PROVIDED SHIELD 9T18Y1074G06

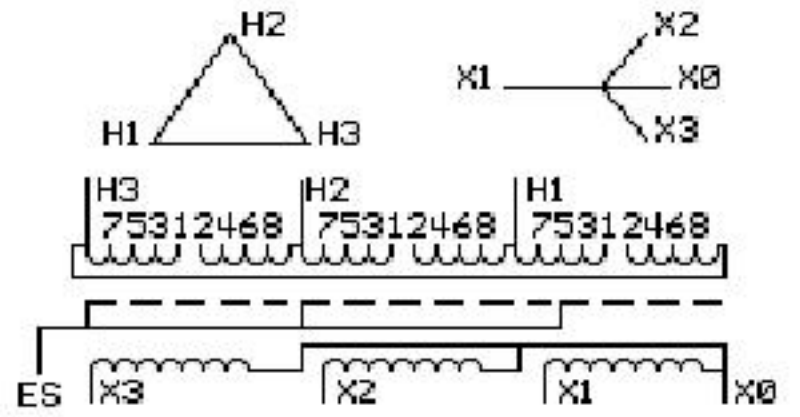
SUITABLE FOR NONSINUSOIDAL CURRENT LOAD WITH K-FACTOR NOT TO EXCEED 4
BEFORE HANDLING, INSTALLING AND OPERATING, SEE INSTRUCTION 475A667AAP001
ALUMINUM CONDUCTOR PRIMARY: 10 KV BIL SECONDARY: 10 KV BIL
Outline: 303B111GEDYP75A

IN ACCORDANCE WITH NEC SECTION 450-9, ALLOW AT LEAST SIX INCHES
CLEARANCE FOR VENTILATION. CHECK ADDITIONAL NEC AND LOCAL CODE

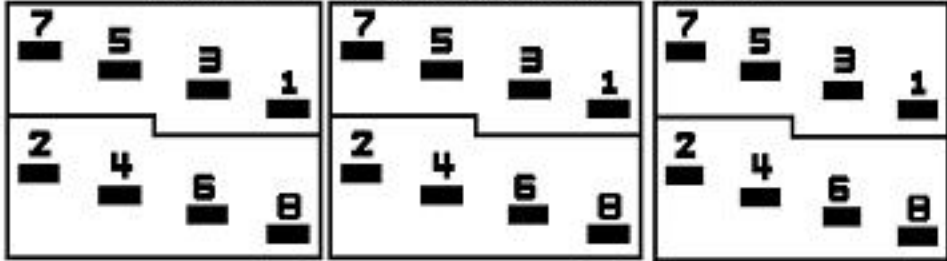
GE Energy Industrial Solutions

NEMA CLASS AA DRY TYPE TRANSFORMER

Meets DOE 2016 efficiency



COIL TAP ARRANGEMENT



| JUMPER CONNECTION | |
|-------------------|-------|
| TAP | VOLTS |
| 1-2 | 503 |
| 2-3 | 494 |
| 3-4 | 480 |
| 4-5 | 467 |
| 5-6 | 458 |
| 6-7 | 445 |
| 7-8 | 431 |

NET WGT
680 LB
308.4 Kg

58560
DY75A
NOG
121415

INSPECTION & FINAL TEST N551!

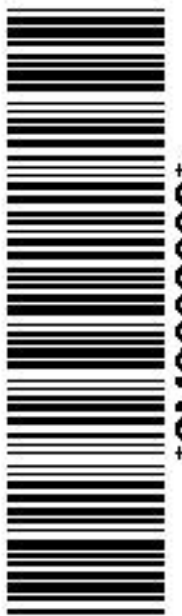


Assembled in Mexico

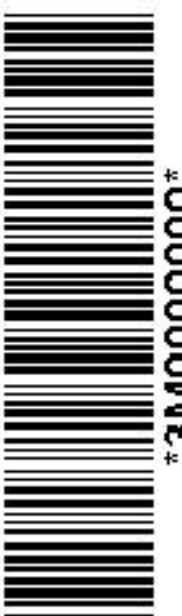
X3 - X2 - X1 - -
- H3 - H2 - H1

Note: X0 at the bottom

X3 - X2 - X1 - -
- H3 - H2 - H1
X3 - X2 - X1 - -
- H3 - H2 - H1
X0



2M0000000



3M0000000