



# Transformer



\*M0000000\*

Catalog Number      Type QL

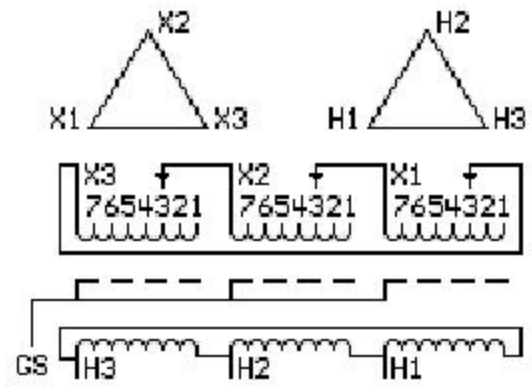
9T83B3012G03

30.0 KVA    60 HZ    3 PH 6.5 % IMP

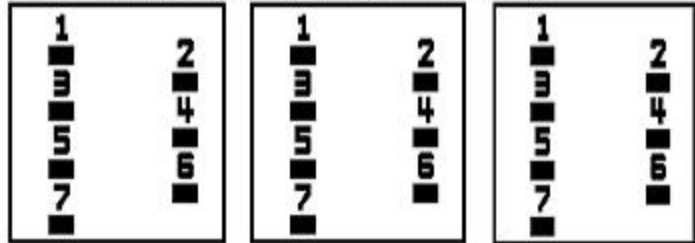
40 C AMB.    150 C RISE    220 C SYSTEM    IS-19C

PRIMARY (X)    208 VOLTS (LINE-LINE)  
SECONDARY (H)    240 VOLTS (LINE-LINE)

ELECTROSTATIC GROUND SHIELD IN EACH PHASE



### COIL TAP ARRANGEMENT



JUMPER CONNECTION	
TAP	VOLTS
1	219
2	212
3	208
4	204
5	197
6	193
7	188

NET WGT  
334 LB  
151.5 Kg  
9T83B3012G03  
21689  
W372  
NOG  
013013

INSPECTION  
&  
FINAL TEST  
N305!



LISTED 769G

ENCLOSURE TYPE 2 (IP30). RAINPROOF TYPE 3R ENCLOSURE (IP32) WHEN PROVIDED SHIELD 9T18Y4317G05

Assembled in Mexico

BEFORE HANDLING, INSTALLING AND OPERATING, SEE INSTRUCTION 475A667AAP001      Outline: 303B401AAP072  
ALUMINUM CONDUCTOR      PRIMARY: 10 KV BIL      SECONDARY: 10 KV BIL

H3 - H2 - H1 - -  
- X3 - X2 - X1

IN ACCORDANCE WITH NEC SECTION 450-9, ALLOW AT LEAST SIX INCHES CLEARANCE FOR VENTILATION. CHECK ADDITIONAL NEC AND LOCAL CODES.

Note: Standard

H3 - H2 - H1 - -  
- X3 - X2 - X1

H3 - H2 - H1 - -  
- X3 - X2 - X1



\*M0000000\*



\*M0000000\*