



# Transformer



\*M0000000\*

Catalog Number Type QL

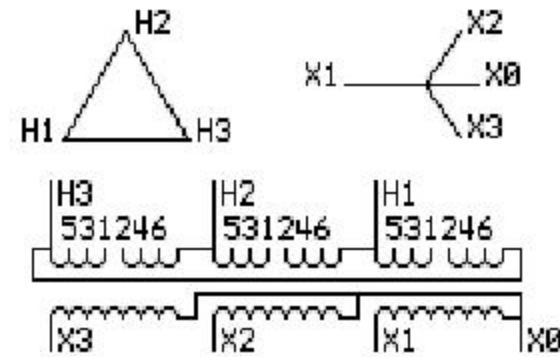
9T83B4003G28

34.0 KVA 60 HZ 3 PH 4.8 % IMP

40 C AMB. 150 C RISE 220 C SYSTEM IS-19C

Note: Design is based on 40.00KVA & 150C Rise 5.7% Imp.

PRIMARY (H) 230 VOLTS (LINE-LINE)  
SECONDARY (X) 460 VOLTS (LINE-LINE)  
266 VOLTS (LINE-NEUTRAL)



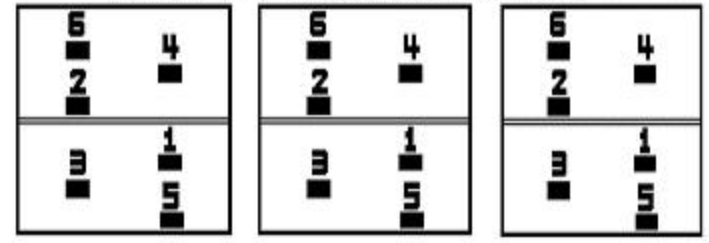
JUMPER CONNECTION

TAP	VOLTS
1-2	241
3-4	230
5-6	220

NET WGT  
415 LB  
188.2 Kg  
9T83B4004G28  
24323  
KV373  
NOG  
020413

INSPECTION & FINAL TEST N306!

### COIL TAP ARRANGEMENT



ENCLOSURE TYPE 2 (IP30). RAINPROOF TYPE 3R ENCLOSURE (IP32) WHEN PROVIDED SHIELD 9T18Y4317G05

Assembled in Mexico

BEFORE HANDLING, INSTALLING AND OPERATING, SEE INSTRUCTION 475A667AAP001 Outline: 303B401AAP073  
ALUMINUM CONDUCTOR PRIMARY: 10 KV BIL SECONDARY: 10 KV BIL

IN ACCORDANCE WITH NEC SECTION 450-9, ALLOW AT LEAST SIX INCHES CLEARANCE FOR VENTILATION. CHECK ADDITIONAL NEC AND LOCAL CODES.

X3 - X2 - X1 - -  
- H3 - H2 - H1

Note: X0 Terminal at the bottom

X3 - X2 - X1 - -  
- H3 - H2 - H1  
X3 - X2 - X1 - -  
- H3 - H2 - H1  
X0

