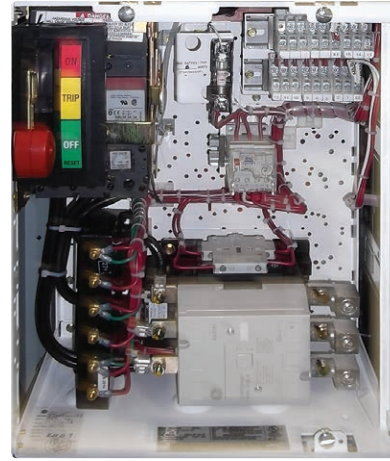
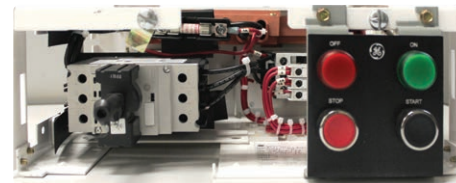




Compact Starters for E9000* Motor Control Centers Fact Sheet



NEMA Size 4 FVNR



10 HP FVNR

Compact Design: Smaller Footprint

GE now offers NEMA-rated and horsepower-rated compact starters to address the industry demand for a smaller unit footprint. These new starters are full voltage non-reversing (FVNR) combination motor starters for the E9000 low-voltage motor control center equipment.

NEMA-rated Starter Ratings

- Voltage: 480V
- Short-circuit: 65kAIC
- NEMA size 1-4

NEMA-rated Starter Features

- Full voltage non-reversing starter
- Spectra* series circuit breaker
- C2000 NEMA-rated contactor
- Standard operating handle

Horsepower-rated Starter Ratings

- Voltage: 480V
- Short-circuit: 65kAIC
- HP Rating: 1-100HP

Horsepower-rated Starter Features

- Full voltage non-reversing
- Manual motor starter disconnect up to 30HP
- Spectra* series circuit breaker for 40 to 100HP
- C2000 HP-rated contactor
- 22.5mm P9 pilot devices

NEMA-rated Starter Sizing & Overload Options

NEMA Size	Horsepower (HP)	Inches	Bi-Metallic	Solid-State	Solid-State with Communications	Max No. of Aux Contacts	Max No. Pilot Devices	Pilot Device
1 (½X unit)	10	6	X	-	-	4	3	22.5
1	10	12	X	X	X	4	5	30.5
2	25	12	X	X	X	4	5	30.5
3	50	12	X	X	X	4	5	30.5
4	100	18	X	X	X	4	5	30.5

Horsepower-rated Starter Sizing & Overload Options

HP Rating	Inches	Bi-Metallic	Solid-State	Solid-State with Communications	Max No. of Aux Contacts	Max No. of Pilot Devices
1-30	6	X	-	-	4	4
40-100	12	X	-	-	4	6