



# Zenith\*

## Automatic Transfer Switch Modbus Annunciator

One Device. Complete Remote Control.



### Overview

Easily monitor, control and test remotely from a central location with the Zenith ATS Modbus Annunciator. Brought to you by GE's Industrial Solutions Business, the Zenith ATS Modbus Annunciator offers a wide range of innovative features and allows full, remote control via Modbus protocol.

### Key Applications & Verticals

Power control centers providing power to large complexes, buildings and critical facilities.

### Key Features & Benefits

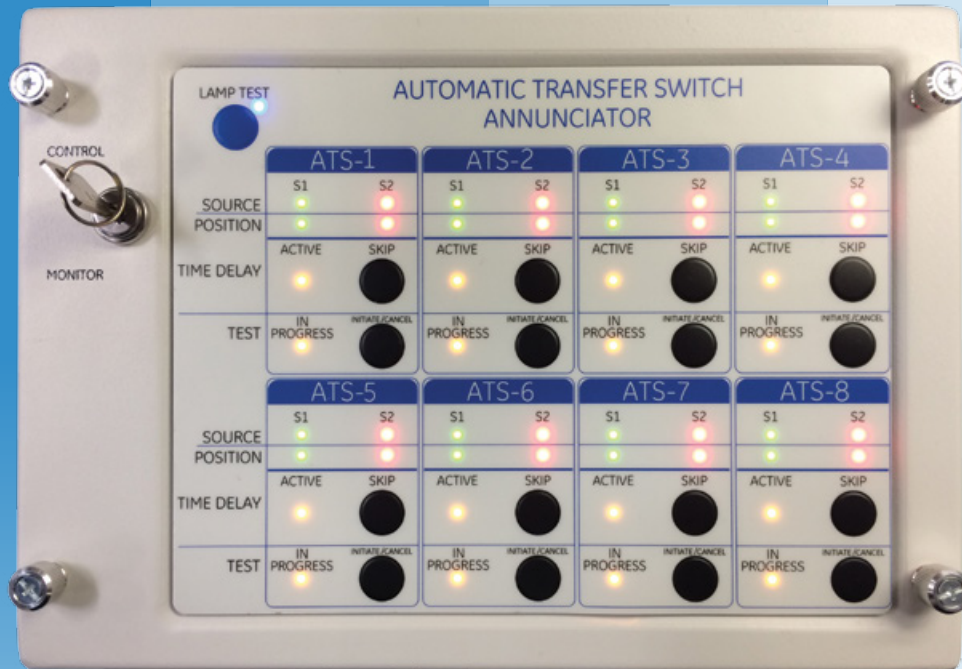
- Control remotely for safer, easier use from a controlled environment
- Fully adaptable with existing systems for easy installation and integration
- Pre-programmed to accept 8 transfer switches for multiple monitoring capabilities
- High-intensity LED indicator can be viewed up to 20 feet away for easier monitoring
- High-durability keypad sustains up to 1 million operations with no damage
- Meets EMC, IEE electrical communication standards to withstand external noise with no interruption

### Advantages

- Plug-and-play capability
- Remote control and multiple-switch monitoring
- Accepts up to 32 additional remote annunciators
- Integrates seamlessly with existing systems and conditions
- Compact, metal-based enclosure
- On-board programming port

# Installation. Control. Testing. Monitoring. Made Easy.

The Zenith ATS Modbus Annunciator delivers the ease and flexibility to make quick and effective decisions remotely, from one central location. This first-of-its-kind automatic transfer switch annunciator is designed for simplicity and maximum functionality when it counts the most.



## Easier Installation

- Save labor and installation time, and protect equipment with compact, metal-based enclosure
- Wall- or surface-mount using supplied, multi-functional brackets
- Install with no external hardware—cover secures tightly with supplied thumb screws
- Connect to network easily using standard Belden twisted pair cable
- Secure cover and box assembly with NEMA 1A gasket

## Better Monitoring

- View and monitor the status of up to 8 Automatic Transfer Switches at the same time
- Know ATS source availability, position, active tests and timers with high-intensity LEDs viewable from up to 20 feet away
- Check “Power On” LED indicator to know supply voltage is present to the annunciator, even if all other LEDs are turned off
- Connect up to 32 remote control annunciators to see everything from one central location

## More Control

- Operate each ATS connected to the network with a state-of-the-art multi-color membrane keypad, with high-durability buttons that can withstand up to 1 million operations
- Prevent lockout and maintain maximum security and control of the Modbus device with keyed selector
- Control ATS functions remotely, including test and timer bypass when required, with easy-to-press buttons
- Use with PC/SCADA monitoring equipment for total system control

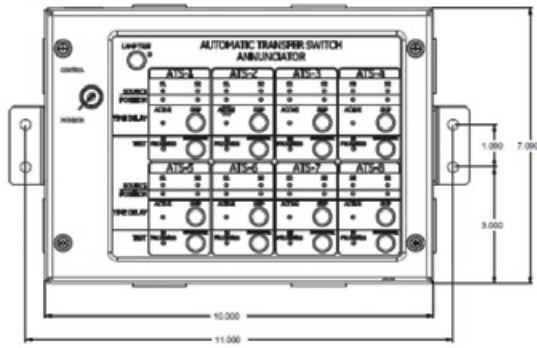
## Complete Testing

- Conduct remote test operations, as well as timer bypass operations. Allows for remote bypassing of T and W extended timers
- Verify functioning LEDs with lamp test
- Use the Load Test operation of the MX controller to conduct a local test of the ATS
- Can be easily programmed through the on-board port without removing from installed location

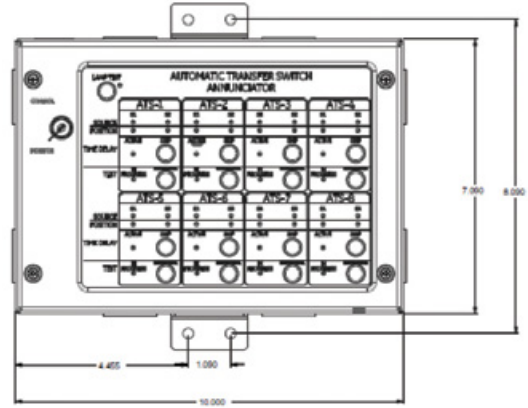
# Mounting Made Easy

With multi-functional mounting brackets supplied with the Zenith ATS Modbus Annunciator, there is no need for additional tools or hardware—mounting and installing couldn't be easier.

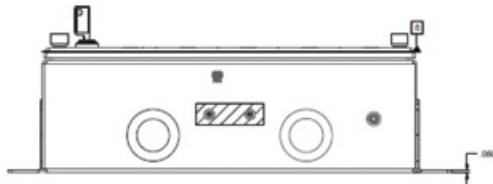
## OUTLINE DRAWING



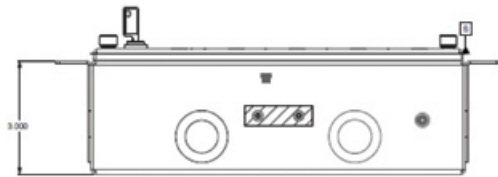
Side Mounted Dimensions\*



Top and Bottom Mounted Dimensions\*



Bottom Mounted Dimensions\*



Flush Mounted Dimensions\*

\*All Dimensions Shown In Inches

## Specifications

Microprocessor Capabilities	GE's MX150 or MX250 microprocessor-based controllers
Power Supply (sold separately)	24 Vac or 24 Vdc
Humidity Level	5-95% (non-condensing)
Electrical Standards	Meets EMC and IEEE electrical standards for communication
Firmware Upgrades	Supports to RS-485 connectivity (via USB)

## Fully Approved:

- Ringing wave immunity per IEEE 472 (ANSI C37.90A)
- Conducted and Radiated Emissions per EN55022 Class B (CISPR 22) (Exceeds EN 55011 & MILSTD 461Class 3)
- ESD immunity test per EN 61000-4-2Class B (Level 4)
- Radiated RF electromagnetic field immunity test per EN 61000-4-3 (ENV 50140) 10 v/m
- Electrical fast transient/burst immunity test per EN 61000-4-4
- Surge immunity test per EN 61000-4-5 IEEE C62.41 (1.2 X 50µs, 0.5to 4 kV)
- Conducted immunity test per EN 61000-4-6 (ENV 50141)
- Voltage dips and interruption immunity EN 61000-4-11

## Reliability

- Distributed fault tolerance
- Proven field performance
- Controller continuity

## Intelligence

- Industry leading controller features
- Ethernet interface for remote access
- Centralized network management

## Investment Protection

- Module Compatibility
- Power Shelf Growth
- Secondary Voltage flexibility +24V / -48V
- Flexible Upgrade Options

## Management Visibility

Galaxy Manager\* software is the centralized visibility and control component of a comprehensive power management system designed to meet engineering, operations and maintenance needs. The Galaxy Manager client-server architecture enables remote access to system controllers across the power network.

- Dashboard display with one-click access to management information database
- Trend analysis
- Scheduled or on demand reports
- Fault, configuration, asset, and performance management

## Training

GE offers on-site and classroom training options based on certification curriculum. Technical training can be tailored to individual customer needs. Training enables customers and partners to more effectively manage and support the power infrastructure. We have built our training program on practical learning objectives that are relevant to specific technologies or infrastructure design objectives.

## Service & Support

GE field service and support personnel are trusted advisors to our customers – always available to answer questions and help with any project, large or small. Our certified professional services team consists of experts in every aspect of power conversion with the resources and experience to handle large turnkey projects along with custom approaches to complex challenges. Proven systems engineering and installation best practices are designed to safely deliver results that exceed our customers' expectations.

[1-800-637-1738](tel:1-800-637-1738)

## Warranty

GE is committed to providing quality products and solutions. We have developed a comprehensive warranty that protects you and provides a simple way to get your products repaired or replaced as soon as possible.

For full warranty terms and conditions please go to

[www.geindustrial.com](http://www.geindustrial.com)

GE  
4200 Wildwood Parkway  
Atlanta, GA. 30339 USA  
[www.geindustrial.com](http://www.geindustrial.com)

Learn more about GE Zenith ATS at  
<http://www.geindustrial.com/products/automatic-transfer-switches>

## Imagination at work

\*Registered trademark of the General Electric Company.

The GE brand, logo, and lumination are trademarks of the General Electric Company. © 2016 General Electric Company. Information provided is subject to change without notice. All values are design or typical values when measured under laboratory conditions.

DEA-643, Rev. 10/2016