



Lockout kit for Trip Unit:

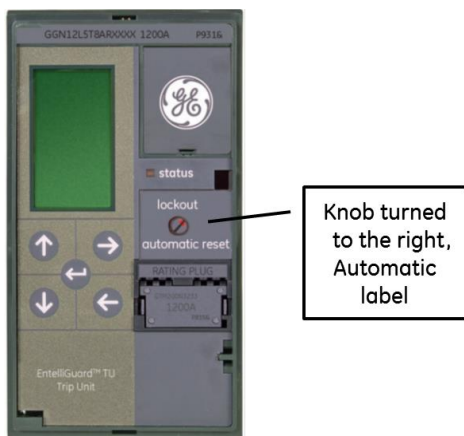


Figure A: Automatic Lockout Reset

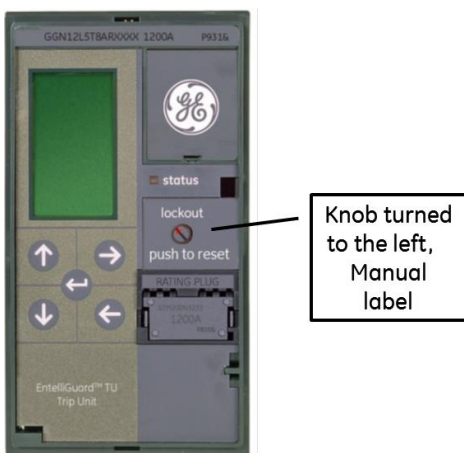


Figure B: Manual Lockout Reset

Table1. Catalog Numbers

Catalog#	Description
GLKAR	Automatic Reset TU Lockout Kit
GLKMR	Manual Reset TU Lockout Kit

Contents illustrated in Figure F

*Indicates a trademark of the General Electric Company and/or its subsidiaries

EntelliGuard * TU Accessories

Lockout kit for trip unit instructions

WARNING: Before installing any accessories, turn the breaker OFF, disconnect it from all voltage sources, and discharge the closing springs.

AVERTISSEMENT: Avant d'installer tout accessoire, mettre le disjoncteur en position OFF, le déconnecter de toute tension d'alimentation, et décharger les ressorts d'armement

1. Turn the breaker off and discharge the closing springs by depressing the OFF and ON buttons in the sequence OFF-ON-OFF. Verify that the breaker OFF-ON indicator shows OFF on a green background and that the charge indicator shows DISCHARGE on a white background. If installing in a draw-out type breaker remove breaker from adaptor (cassette) before continuing.
2. Identify the trip unit's current lockout reset configuration. See Fig. A. (Automatic Lockout Reset) and Fig. B (Manual Lockout Reset). Automatic Lockout Reset – when the breaker trips, the knob remains in place and the breaker is not locked out. Manual Lockout Reset – when the breaker trips, the knob pops out and the breaker is prevented from closing until the button is manually pushed in.
3. Locate the locking pin in the side of the trip unit and remove with tweezers (see Fig. C)
4. Remove the Lockout Label, see Fig. D, and replace with new label delivered with kit.

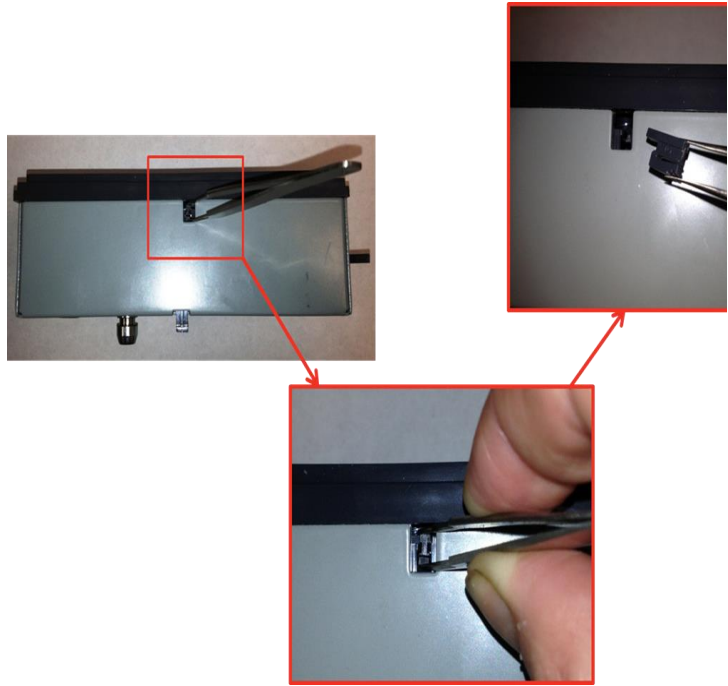


Figure C: Locking Pin location & Removal

5. Turn knob to the right for Automatic Lockout Operation as shown in Fig. A or turn knob to the left for Manual Lockout Operation as shown in Fig. B
6. Re-insert the locking pin in the side of the trip unit as shown in Fig. E; you will then hear a "click" when it is in position.

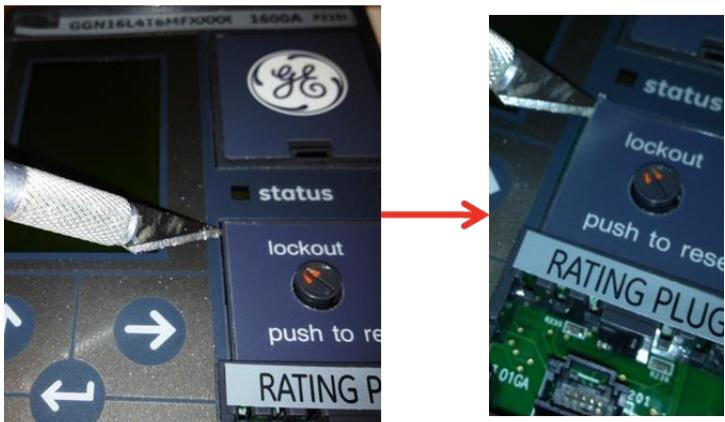


Figure D: Removal of Existing Label



Figure E: Re-insertion of Locking Pin

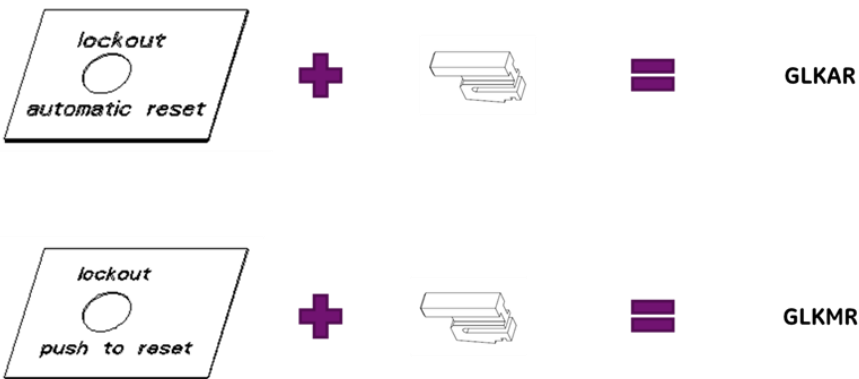


Figure F: Kit Contents

These instructions do not purport to cover all details or variations in equipment nor, to provide contingency to be met in connection with installation, operation, or maintenance. Should further information be desired, or should particular problems arise which are not covered sufficiently for the purchaser's purposes, the matter should be referred to GE.

GE
 41 Woodford Ave, Plainville, CT., 06062
www.geelectrical.com
 © 2009 General Electric Company