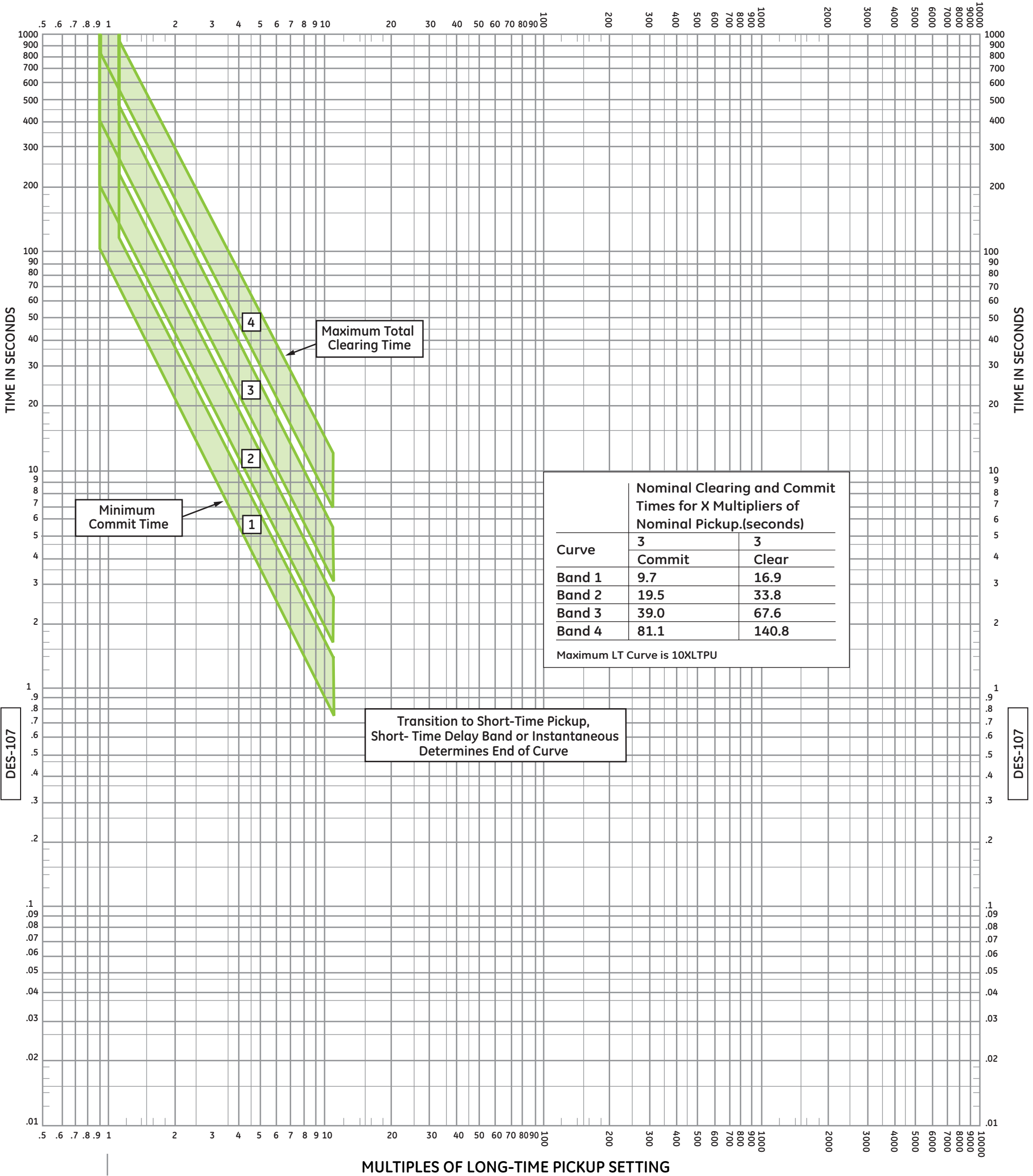


MULTIPLES OF LONG-TIME PICKUP SETTING



MULTIPLES OF LONG-TIME PICKUP SETTING



Entellisys™ Low-Voltage Switchgear with EntelliGuard™ Low-Voltage Power Circuit Breakers

DES-107

Available Ratings (Amperes)

Model	Frame	Current Sensor	Rating Switch Setting (Amperes)
EG08	800	150	80, 100, 125, 150
		400	150, 200, 225, 250, 300, 400
		800	300, 400, 450, 500, 600, 700, 800
EG16	1600	800	300, 400, 450, 500, 600, 700, 800
		1600	600, 800, 1000, 1100, 1200, 1600
EG20	2000	2000	750, 800, 1000, 1200, 1500, 1600, 2000
EG32	3200	3200	1200, 1600, 2000, 2400, 2500, 3000, 3200
EG40	4000	4000	1600, 2000, 2500, 3000, 3200, 3600, 4000
EG50	5000	5000	3200, 4000, 5000

All Voltages: 600 Vac and below

Time Overcurrent Protection
Long-Time Pickup and Delay

Long-Time Function

- Long-time setting multipliers: 0.5 to 1.1 in 0.05 increments and are multiples of the rating switch setting amps.
- Delay bands: 1, 2, 3 and 4