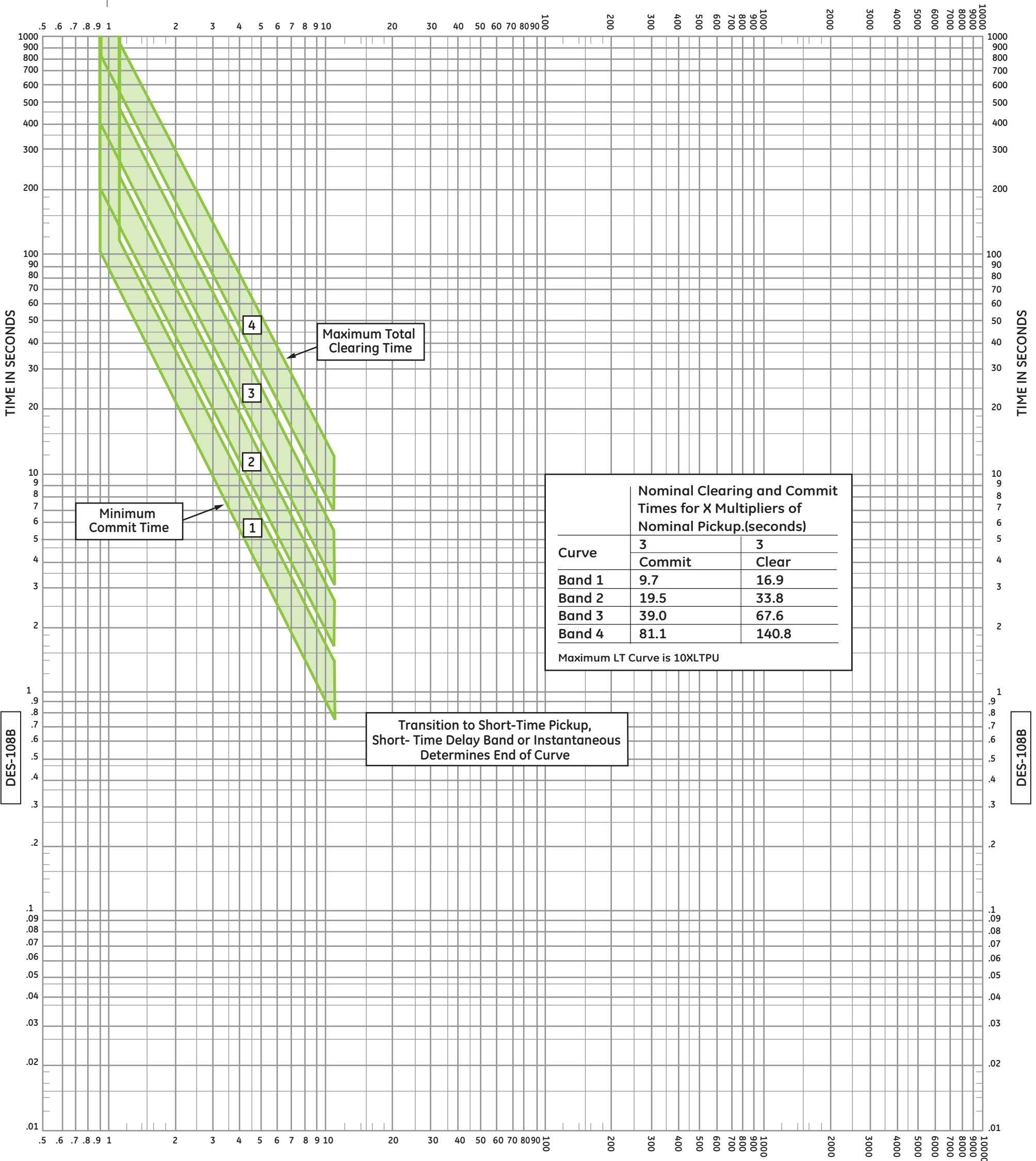



MULTIPLES OF LONG-TIME PICKUP SETTING



MULTIPLES OF LONG-TIME PICKUP SETTING



**Available Ratings (Amperes)**

Model	Frame	Current Sensor	Rating Switch Setting (Amperes)
EE08	800	400	150, 200, 225, 250, 300, 400
		800	300, 400, 450, 500, 600, 700, 800
EE16	1600	800	300, 400, 450, 500, 600, 700, 800
		1600	600, 800, 1000, 1100, 1200, 1600
EE20	2000	2000	750, 800, 1000, 1200, 1600, 2000
EE32	3200	3200	1200, 1600, 2000, 2400, 2500, 3000, 3200
EE40	4000	4000	1600, 2000, 2500, 3000, 3200, 3600, 4000
EE50	5000	5000	3200, 4000, 5000

**All Voltages:** 600 Vac and below

## Entellisys™ Low-Voltage Switchgear with EntelliGuard™ E Low-Voltage Power Circuit Breakers

Time Overcurrent Protection  
Long-Time Pickup and Delay

# DES-108B

**Long-Time Function**

- Long-time setting multipliers: 0.5 to 1.1 in 0.05 increments and are multiples of the rating switch setting amps.
- Delay bands: 1, 2, 3 and 4