



# PowerMark Gold<sup>\*</sup> Load Centers

100-125 Amps, 12/22/24 Circuits, Outdoor

## More Breaker Capacity

- Main Lug
  - 14 one-inch breakers
  - 24 total breaker spaces utilizing THQPs
  - Real world 24 circuit capability even with up to 4 AFCIs
- Main Breaker
  - 12 one-inch breakers
  - 22 total breaker spaces utilizing THQPs
  - Real world 22 circuit capability even with 2 AFCIs
- Easier Installation
  - Ground bar included
- Safety Features
  - Insulation tube protects ground bar from main lug wires
- Single Phase, Three Wire, 120/240 VAC, 22 kAIC rated
- UL Listed (Panelboards No. 67)
  - Service barriers included for factory installed main circuit breaker
- 60°C/75°C conductor rating
- Suitable for use as Service Entrance Equipment when installed in accordance with the National Electric Code



# PowerMark Gold Load Centers

## 100-125 Amps, 12/22/24 Circuits, Outdoor



### Technical Data

#### Outdoor Type 3R Enclosure, Combination Flush/Surface Front

Main Ampere Rating	Maximum Spaces					Main Style (Factory Installed)	Catalog Number	Main Wire Size (AWG/kcmil) Cu-Al	Equipment Ground Kit	Box Number
	1 Pole	2 Pole	1 Pole	2 Pole	Total 1 Pole Spaces					
	1" Spaces		1/2" Spaces							
125	14	6	20	8	24	Main Lug	TLM1212RCU <sup>1,2</sup>	6-2/0	Included	R3A
125	12	5	20	8	22	Main Breaker	TM1212RCU	1-2/0	TGK12 & TGK24 (order separately)	
150						TM1210RCU	4-1/0			

<sup>1</sup>For main breaker applications, use reverse feed THQL or THHQL circuit breaker and THQLRK3 breaker retainer.

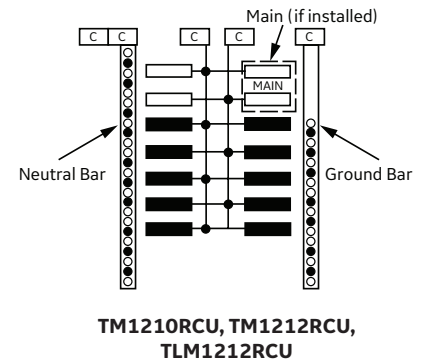
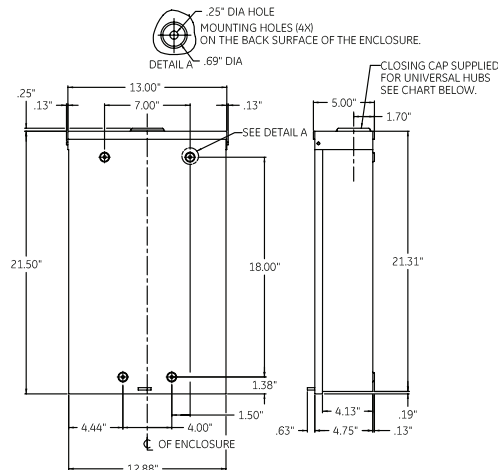
<sup>2</sup>Load center includes a factory installed ground bar and add-a-lug. See wiring diagram. A separate TGL2 can be added in the unlikely event that another ground bar is required.

### Dimensions (in.)

Box	Width	Height	Depth
R3A	13	21.5	5

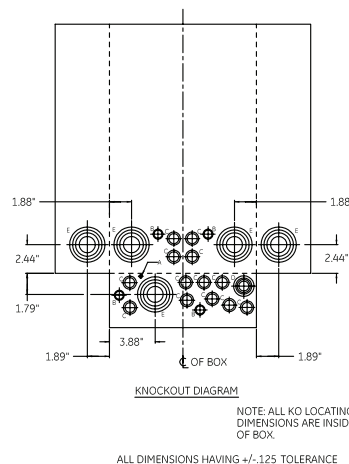
### Knockouts (in.)

Symbol	Conduit Size	Qty.
A	9/32	1
B	3/8 X 1/2	4
C	1/2 X 3/4	13
D	1/2 X 3/4 X 1 X 1 1/4	1
E	1 X 1 1/2 X 2 X 2 1/2	5



### Universal Hubs (in.)

Conduit Opening	Catalog Number
3/4	TC75
1	TC100
1 1/4	TC125
1 1/2	TC150
2	TC200
2 1/2	TC250
Closing Cap	TCCP



GE Energy Connections  
 41 Woodford Avenue  
 Plainville, CT 06062  
 1-800-431-7867  
 www.geindustrial.com

\*Indicates a trademark of the General Electric Company and/or its affiliates. Information provided is subject to change without notice. Please verify all details with GE. All values are design or typical values when measured under laboratory conditions, and GE makes no warranty or guarantee, express or implied, that such performance will be obtained under end-use conditions. ©2016, General Electric Company and/or its affiliates. All rights reserved.  
 12.16 DET-800B